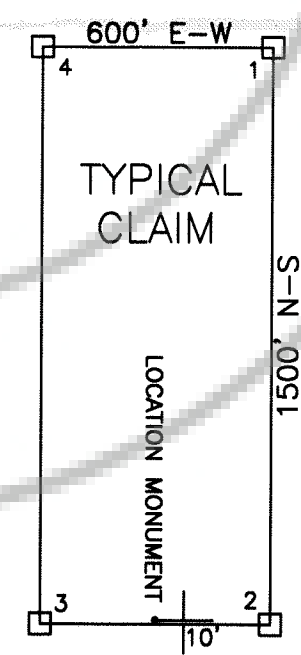


TIE POINT:
The SE corner of FEN 39 is located approximately 611 feet north and 30 feet east of the NE corner of Section 1, T16N, R51E, M.D.M.



TYPICAL LODGE CLAIM
UNLESS OTHERWISE SHOWN
LOCATION MONUMENT MAY LIE AT EITHER END OF THE CLAIM

LEGEND:

- = 2" x 2" x 4' WOOD POST CLAIM CORNER
- = 2" x 2" x 4' WOOD POST LOCATION MONUMENT
- ◇ = FOUND SURVEY MONUMENT

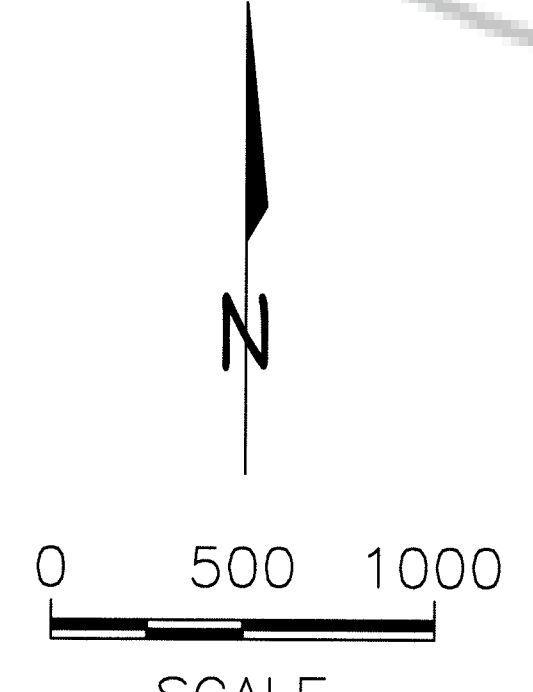
NOTES:

ALL LOCATION MONUMENTS AND CLAIM CORNERS ARE 2" x 2" x 4' WOOD.
ALL CLAIMS ARE 1500' LONG BY 600' WIDE UNLESS OTHERWISE SHOWN.
LOCATION MONUMENTS ARE SET ON THE CENTERLINE OF EACH CLAIM,
10 FEET FROM THE NEAR ENDLINE AND 1490 FEET FROM THE OPPOSITE ENDLINE, UNLESS OTHERWISE SHOWN.

OWNER:

NEWMONT USA LIMITED, d/b/a
NEWMONT MINING CORPORATION
555 FIFTH STREET
ELKO, NEVADA 89801

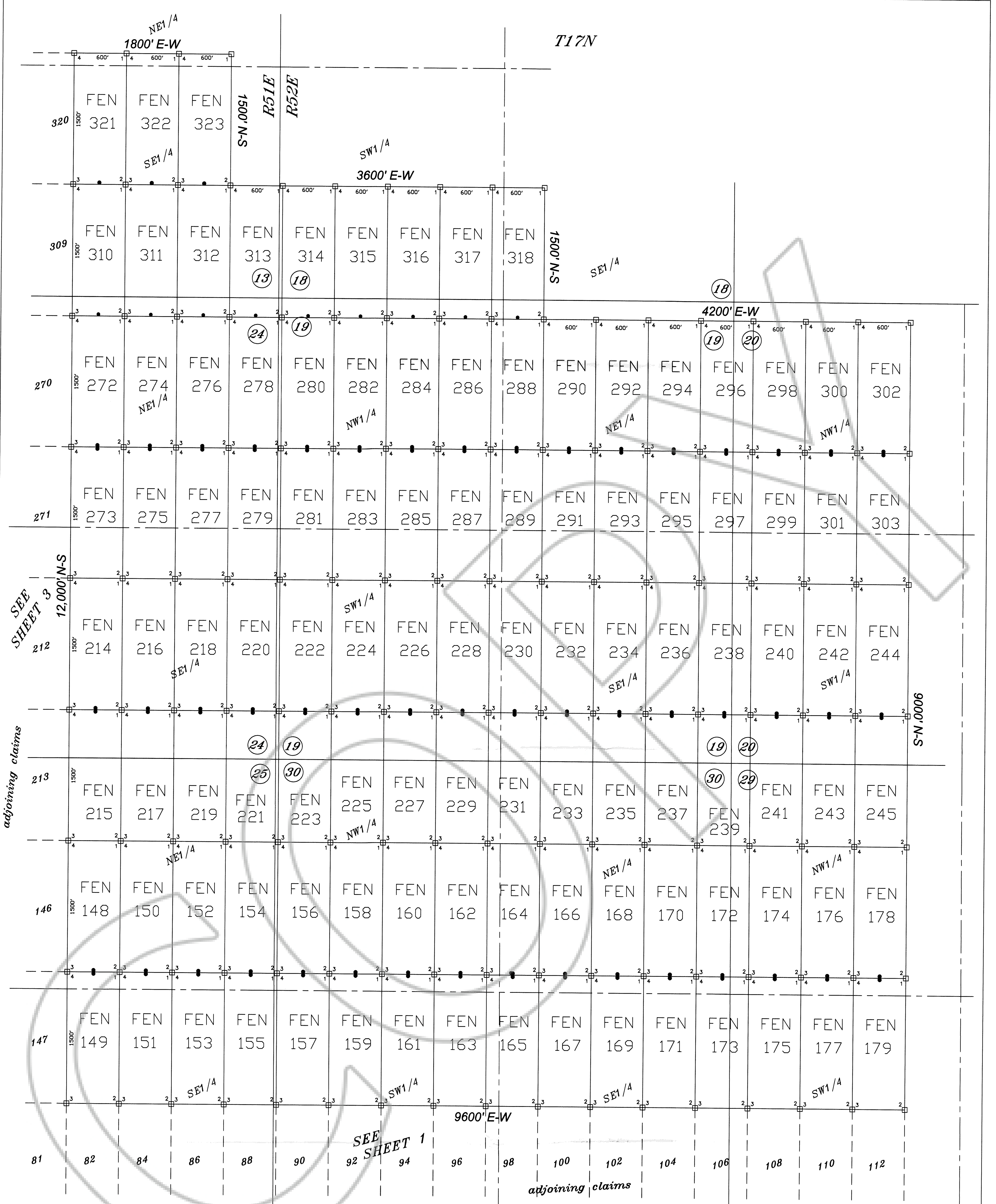
FILED AT THE REQUEST OF *Newmont Mining Corp*
312 2026 at 49 mins past 10 A.M.
RECORDS OF EUREKA COUNTY, NEVADA
JUL REBALEATI, Recorder
No. 203845 Fee \$ 4849.00



SCALE
U.S. Survey Foot
Sections are projected using Nevada
GCDB, Nevada State Plane, 1927

TIE POINT:
The SE corner of FEN 39 is located approximately 611 feet north and 30 feet east of the NE corner of section 1, T16N, R51E, M.D.M.

Claim Map of
FEN 1 - 323
Lode Claims located within
Sections 1, T16N, R51E, MDM
Sections 5 and 6, T16N, R52E, MDM
Sections 13, 14, 22-27, and 34-36, T17N, R51E, MDM
Sections 18, 19, 20 and 29-32, T17N, R52E, MDM
Eureka County, Nevada
NEWMONT MINING CORPORATION



SEE SHEET 3

adjoining claims

adjoining claims

TIE POINT:
 The SE corner of FEN 39 is located approximately 611 feet north and 30 feet east of the NE corner of section 1, T16N, R51E, M.D.M.

- LEGEND:**
- = 2" x 2" x 4" WOOD POST CLAIM CORNER
 - = 2" x 2" x 4" WOOD POST LOCATION MONUMENT
 - ◇ = FOUND SURVEY MONUMENT

NOTES:

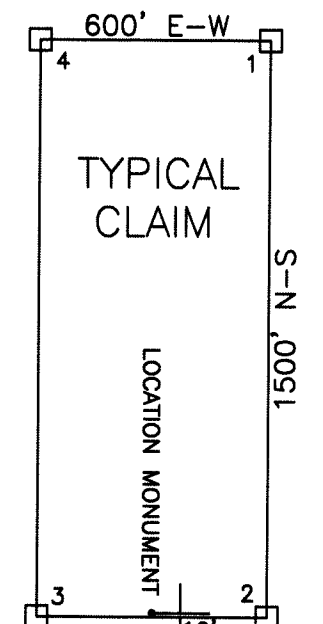
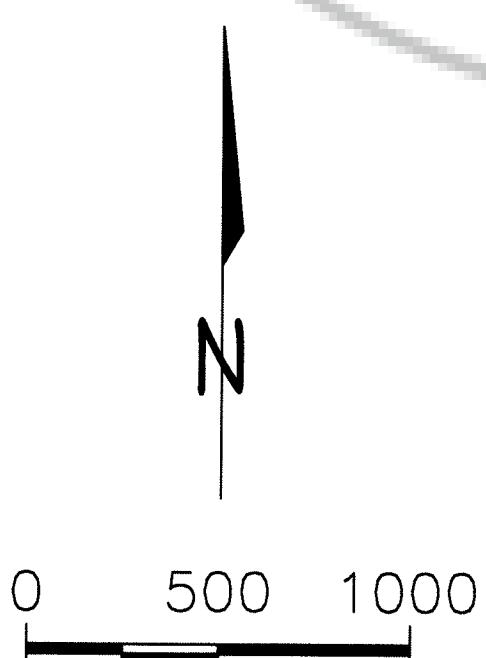
ALL LOCATION MONUMENTS AND CLAIM CORNERS ARE 2" x 2" x 4" WOOD.

ALL CLAIMS ARE 1500' LONG BY 600' WIDE UNLESS OTHERWISE SHOWN.

LOCATION MONUMENTS ARE SET ON THE CENTERLINE OF EACH CLAIM, 10 FEET FROM THE NEAR ENDLINE AND 1490 FEET FROM THE OPPOSITE ENDLINE, UNLESS OTHERWISE SHOWN.

OWNER:
 NEWMONT USA LIMITED, d/b/a
 NEWMONT MINING CORPORATION
 555 FIFTH STREET
 ELKO, NEVADA 89801

FILED AT THE REQUEST OF *Newmont Mining*
 on *12/20/06*, at *4:23* mins. past *11:11* A.M.
 RECORDS OF EUREKA COUNTY, NEVADA
 I.M. REBAL/EATY, Recorder
 File No. **203845** Fee \$ *29.3*

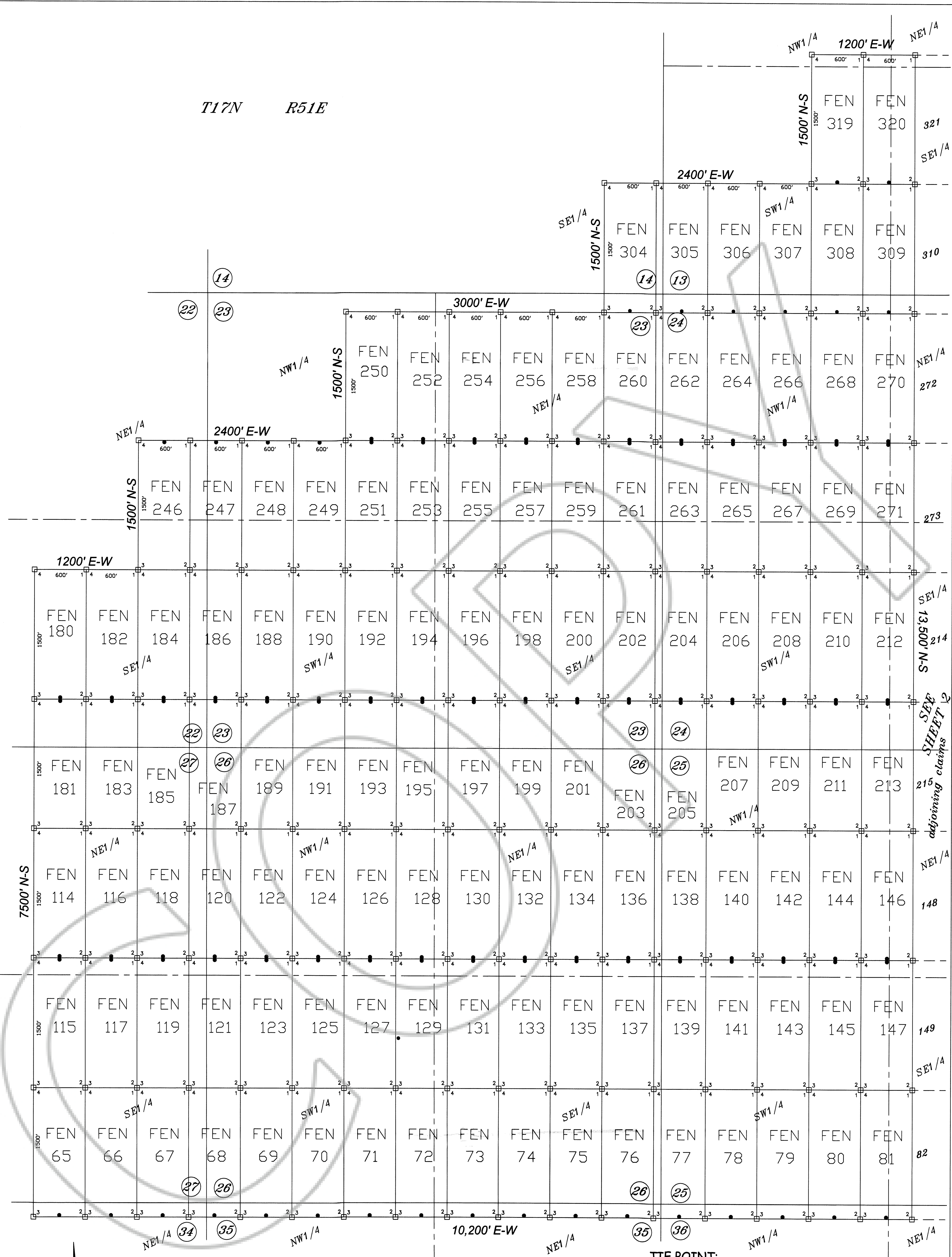


TYPICAL LODGE CLAIM
 UNLESS OTHERWISE SHOWN
 LOCATION MONUMENT MAY LIE AT EITHER END OF THE CLAIM

Claim Map of
FEN 1 - 323
 Lode Claims located within
 Sections 1, T16N, R51E, MDM
 Sections 5 and 6, T16N, R52E, MDM
 Sections 13, 14, 22-27, and 34-36, T17N, R51E, MDM
 Sections 18, 19, 20 and 29-32, T17N, R52E, MDM
 Eureka County, Nevada

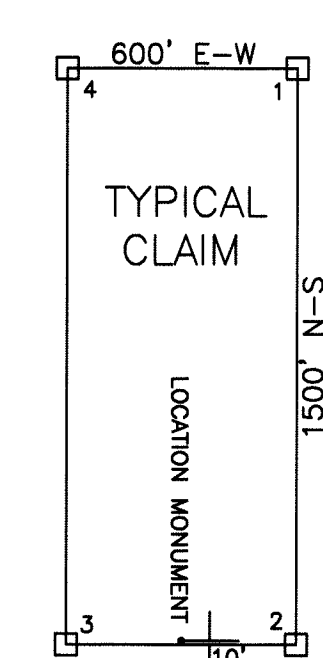
NEWMONT MINING CORPORATION

T17N R51E



0 500 1000
SCALE

U.S. Survey Foot
Sections are projected using Nevada
GCDB, Nevada State Plane, 1927



TYPICAL LODGE CLAIM
UNLESS OTHERWISE SHOWN
LOCATION MONUMENT MAY LIE AT EITHER END OF THE CLAIM

- LEGEND:**
- = 2" x 2" x 4" WOOD POST CLAIM CORNER
 - = 2" x 2" x 4" WOOD POST LOCATION MONUMENT
 - ◇ = FOUND SURVEY MONUMENT

NOTES:
ALL LOCATION MONUMENTS AND CLAIM CORNERS ARE 2" x 2" x 4" WOOD.
ALL CLAIMS ARE 1500' LONG BY 600' WIDE UNLESS OTHERWISE SHOWN.
LOCATION MONUMENTS ARE SET ON THE CENTERLINE OF EACH CLAIM,
10 FEET FROM THE NEAR ENDLINE AND 1490 FEET FROM THE OPPOSITE ENDLINE, UNLESS OTHERWISE SHOWN.

OWNER:
NEWMONT USA LIMITED, d/b/a
NEWMONT MINING CORPORATION
555 FIFTH STREET
ELKO, NEVADA 89801

FILED AT THE REQUEST OF *Newmont Mining*
2/12/20, 2/16/20, at 4:42 p.m. past 12:00 p.m.
RECORDS OF EUREKA COUNTY, NEVADA
J.N. REBALEATI, Recorder
File No. 203845 Fee \$ 307.3

TIE POINT:
The SE corner of FEN 39 is located approximately 611 feet north and 30 feet east of the NE corner of section 1, T16N, R51E, M.D.M.

Claim Map of
FEN 1 - 323
Lode Claims located within
Sections 1, T16N, R51E, MDM
Sections 5 and 6, T16N, R52E, MDM
Sections 13, 14, 22-27, and 34-36, T17N, R51E, MDM
Sections 18, 19, 20 and 29-32, T17N, R52E, MDM
Eureka County, Nevada

NEWMONT MINING CORPORATION

SE 1/4
SHEET 2
adjacent claims