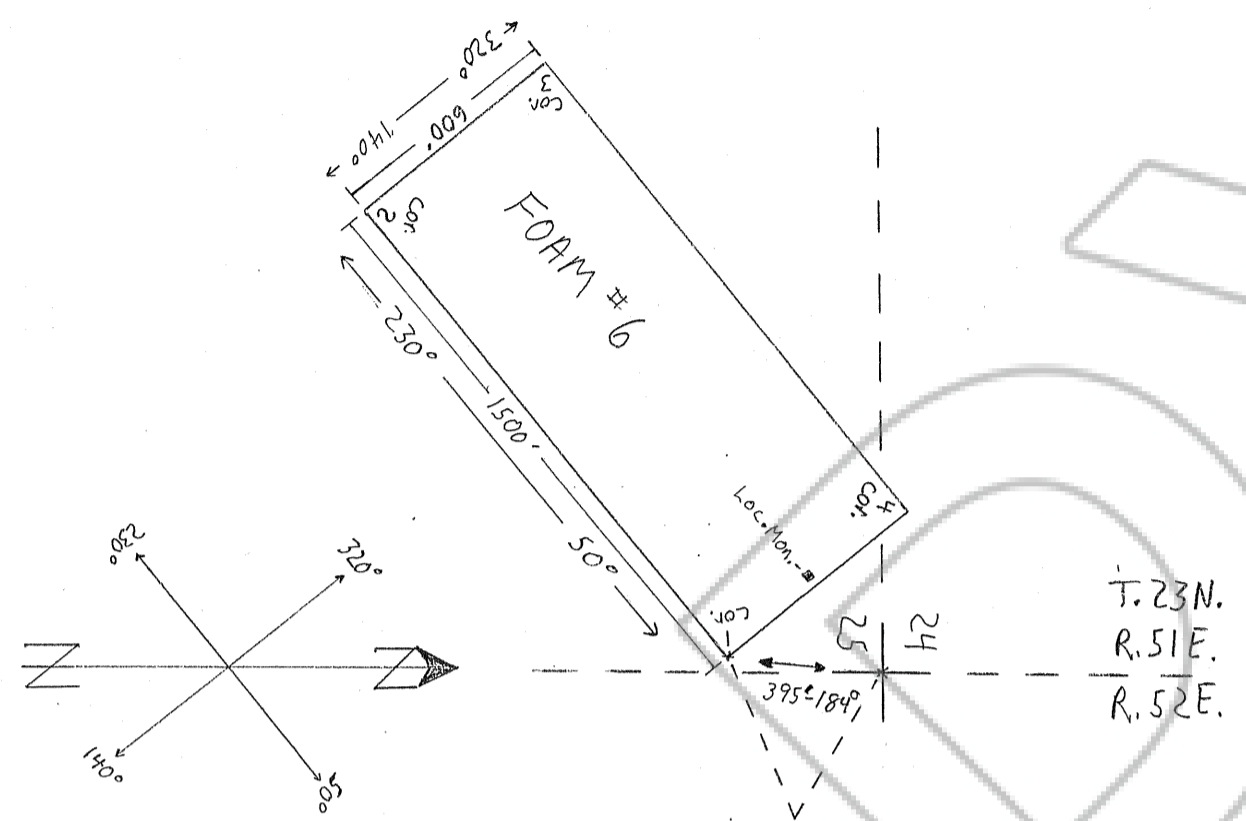
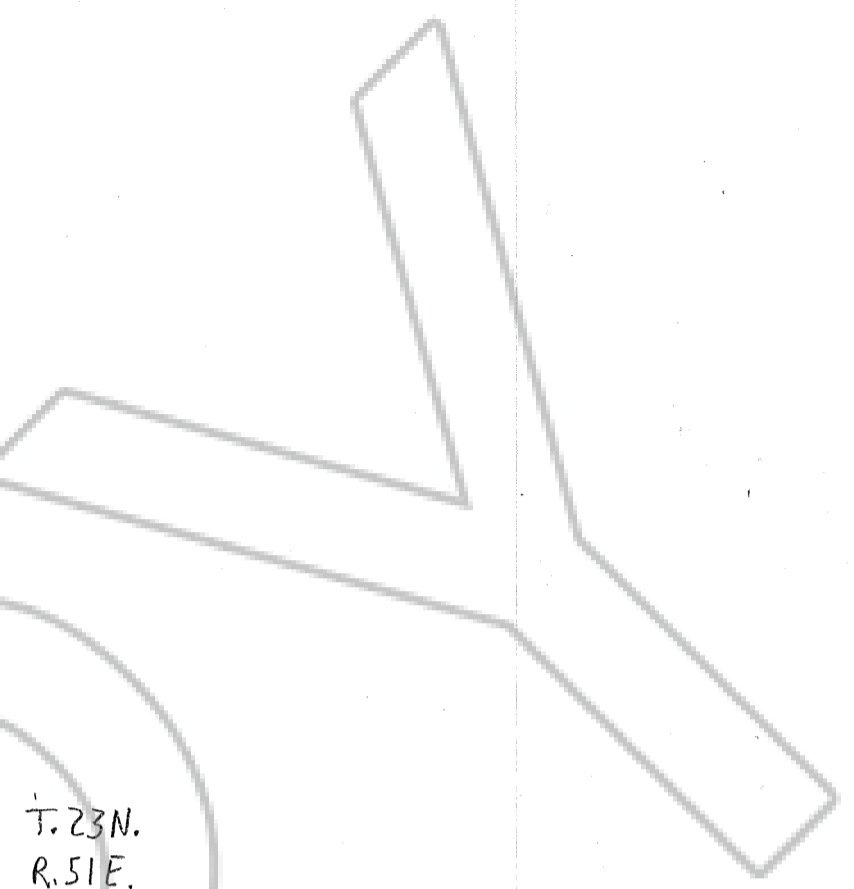


FOAM # 6 Lode Claim



T. 23N.  
R. 51E.  
R. 52E.

Tie Point.  
From Sec. Cor. Marker  
S. 24, 25 T. 23N, R. 51E  
1108M, it is 395' on an  
Azimuth Bearing of 184°  
To NE cor-1- of FOAM # 6  
Lode mining claim.

FOAM # 6 Lode Claim  
Located by: Tim Neal

3300 Skyline Blvd. #325  
Reno Nevada, 89509  
A. Freeman  
3300 Skyline Blvd. #325  
Reno, Nevada, 89509

Located on: December 11, 2005

Located in: Sec. 24, 25 Twp. 23N, R. 51E, 1108M  
Eureka County Nevada

Claim is 1500' long in a 50°-230°  
direction and 600' wide in a  
140°-320° direction.  
Claim is located such that 20' is  
claimed in a 50° direction and  
1480' is claimed in a 230° direction  
from location monument which is  
situated on centerline of claim  
together with 300' on each side of  
centerline.

FILED AT THE REQUEST OF Tim Neal  
on 3/16/06 at 3:33 mins. past 2:00 PM  
RECORDS OF EUREKA COUNTY, NEVADA  
JAN. REBALANTI, Recorder  
File No. 203885 Fee \$ 19.00

Scale 1" = 500'  
1-11-06  
Tim Neal