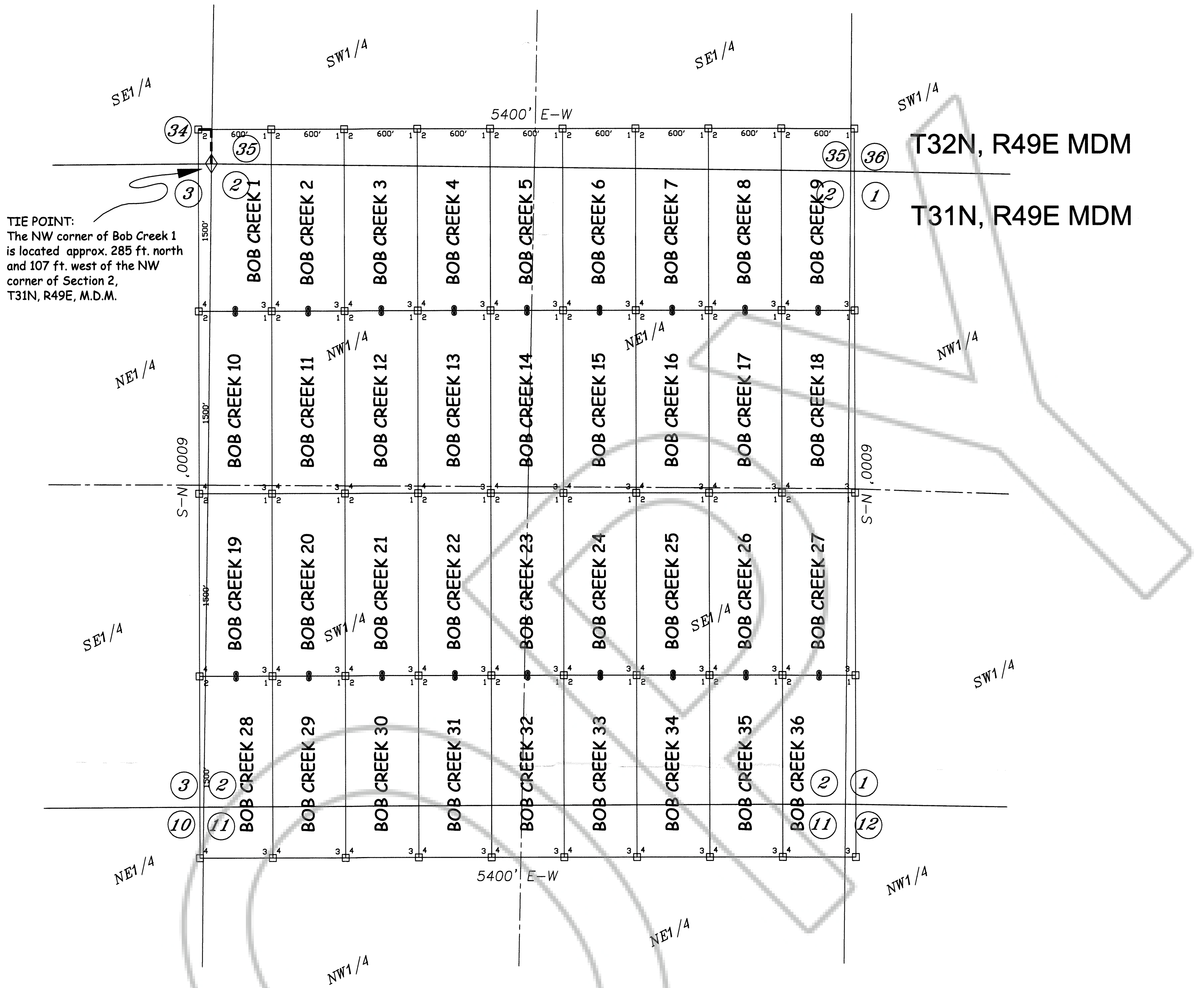
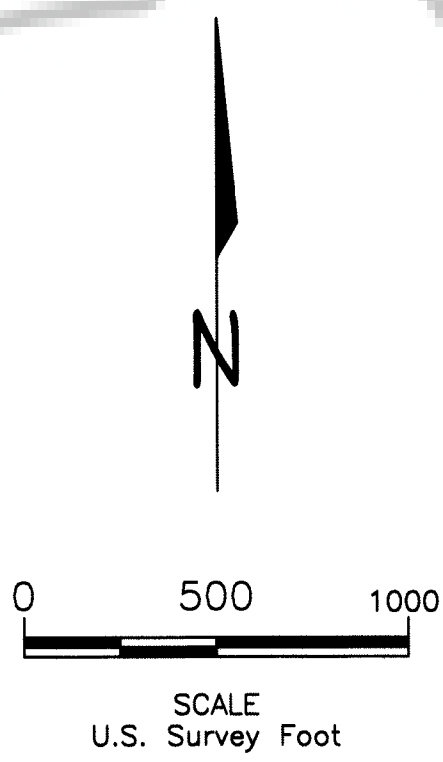


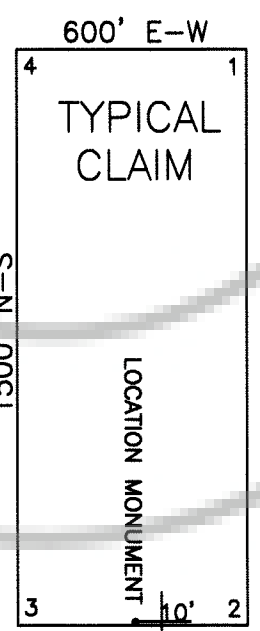
# R49E



**TIE POINT:**  
The NW corner of Bob Creek 1 is located approx. 285 ft. north and 107 ft. west of the NW corner of Section 2, T31N, R49E, M.D.M.



Sections are projected using Nevada GCS, Nevada State Plane, 1927.



TYPICAL LODGE CLAIM  
UNLESS OTHERWISE SHOWN  
LOCATION MONUMENT MAY LIE AT EITHER END OF THE CLAIM

**TIE POINT:**

The NW corner of BOB CREEK 1 is approximately 285 feet north and 107 feet west of the NW corner of section 2, T31N, R49E, M.D.M.

**LEGEND:**

- = 2" x 2" x 4" WOOD POST CLAIM CORNER
- = 2" x 2" x 4" WOOD POST LOCATION MONUMENT
- ◇ = FOUND SURVEY MONUMENT

**NOTES:**

ALL LOCATION MONUMENTS AND CLAIM CORNERS ARE 2" x 2" x 4" WOOD.

ALL CLAIMS ARE 1500' LONG BY 600' WIDE UNLESS OTHERWISE SHOWN.

LOCATION MONUMENTS ARE SET ON THE CENTERLINE OF EACH CLAIM, 10 FEET FROM THE NEAR ENDLINE AND 1490 FEET FROM THE OPPOSITE ENDLINE, UNLESS OTHERWISE SHOWN.

**OWNER:**

Rex Steninger  
P.O. Box 281570  
Lamoille, Nevada 89828

T32N, R49E MDM

T31N, R49E MDM

Claim Map of  
**BOB CREEK 1-36**  
Lode Claims located within  
Sections 1-3 and 10-12, T31N, R49E, MDM  
Sections 34-36, T32N, R49E, MDM

Eureka County, Nevada

FILED AT THE REQUEST OF *Deer Mountain Mining Corp*  
on *3/13/2016*, at *10:07* mins, past *10:00 AM*  
RECORDS OF EUREKA COUNTY, NEVADA  
M.N. REED, Surveyor  
File No. *203832* Fee \$ *504.16*