

EP CLAIMS - EUREKA COUNTY, NEVADA

T17N, R53E

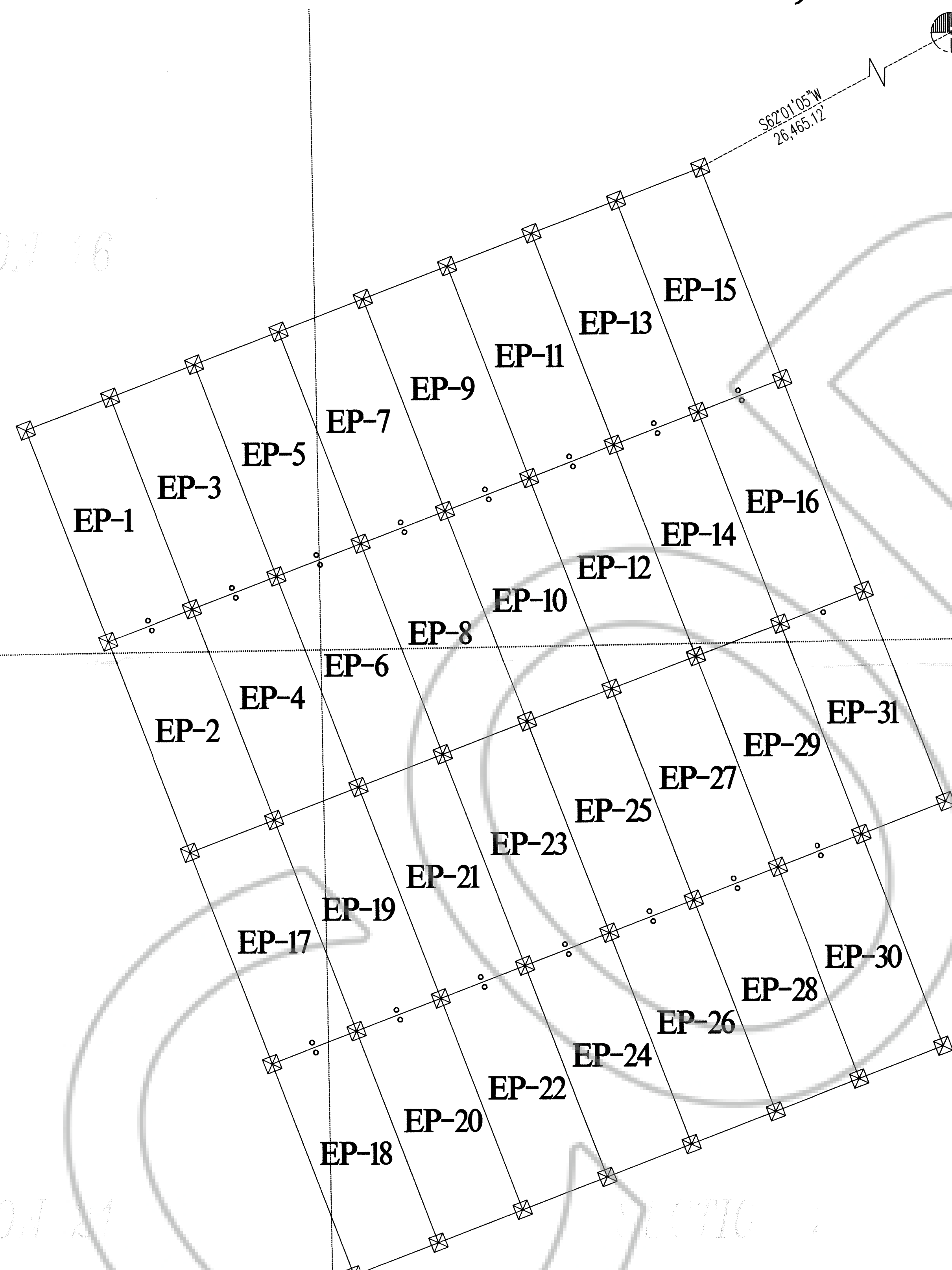
SECTION 16

SECTION 14

SECTION 21

SECTION 22

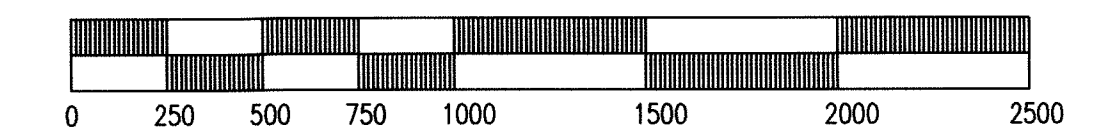
SECTION 23



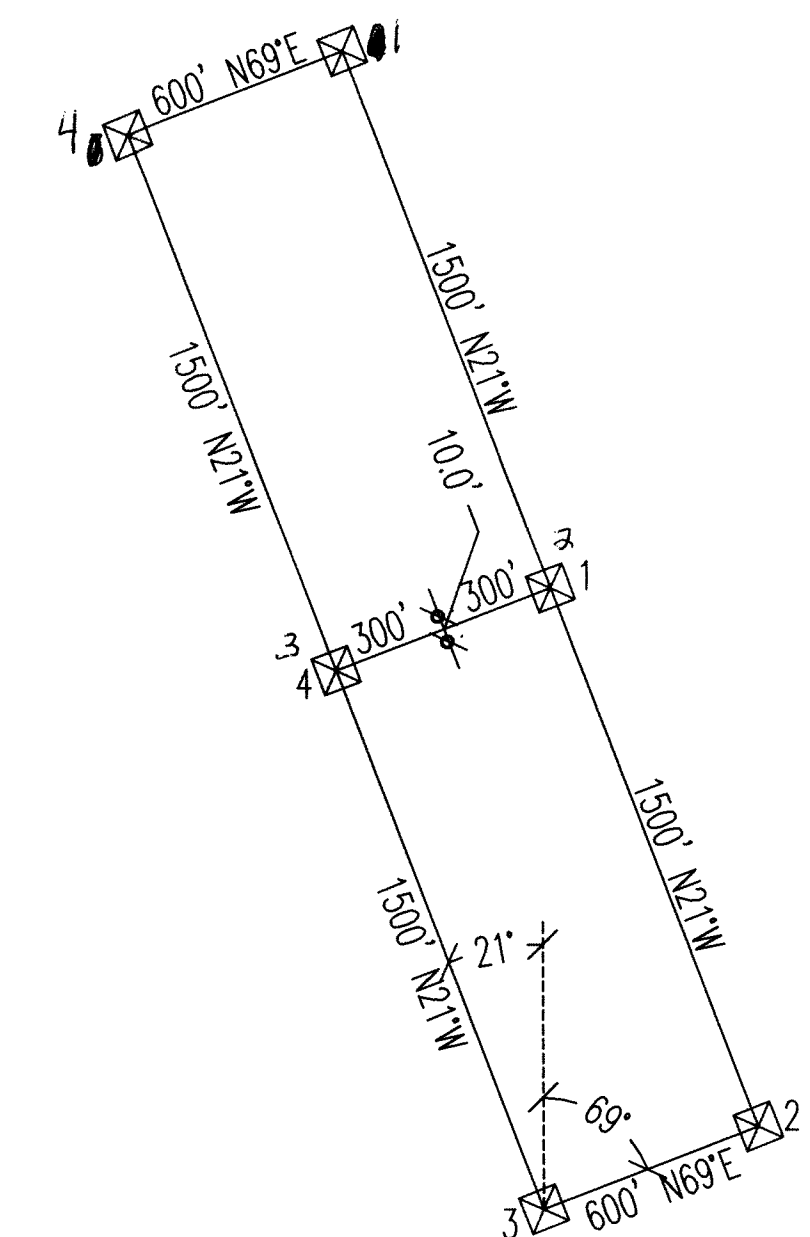
TIE POINT DATA:
NE CORNER OF EP-15 IS 26,465.12'
S62°01'05\"W FROM FOUND BRASS
CAP (1924 US GLO) FOR THE NE
CORNER OF SEC 5, T17N, R54E.



SCALE: 1" = 500'

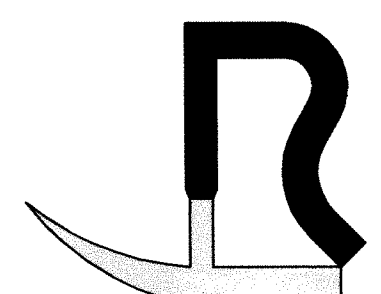


TYPICAL CLAIM



NOTES:
ALL CLAIMS ARE 1500' X 600'
EP-31 WAS LOCATED ON FEBRUARY 25, 2006.
ALL OTHER CLAIMS WERE LOCATED ON FEBRUARY 9, 2006
LOCATION MONUMENTS SET 10' FROM CLAIM END CENTERLINES
ALL MONUMENTS ARE 2" X 2" X 4' WOODEN POSTS WITH METAL TAGS
UNSURVEYED TOWNSHIP - ALL SECTION LINES ARE PROJECTED.

FILED AT THE REQUEST OF *J.R. Exploration*
on 5/2 2006, at 3.5 miles, page 44 of 44
RECORDS OF EUREKA COUNTY, NEVADA
J.L.N. REBALEATI, Recorder
File No. 204632 Fee \$ 469.00



J.R. EXPLORATION
9946 ASTER LANE, SANDY, UT 84094