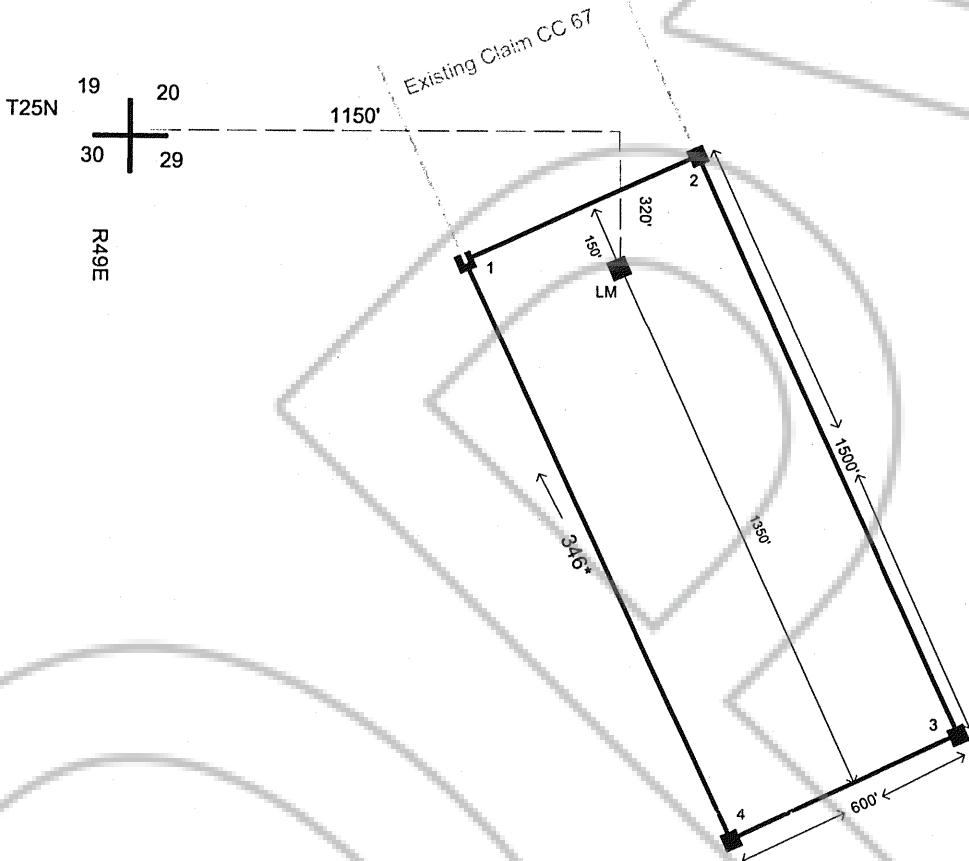


204745



Located: 4/29/2006
By: Greencastle U.S.A., Ltd.
970 Caughlin Crossing, Suite 100
Reno, NV 89509
In: Unknown Mining District, Eureka County, NV
NW 1/4 Sec 29, T.25N., R.49E., MDB&M

FILED AT THE REQUEST OF Greencastle USA Ltd
on 6/16 2006, at 11 mins. past 2:00 M
RECORDED AT THE CLERK'S OFFICE OF EUREKA COUNTY, NEVADA
M.I. M.N. REBALEATI, Recorder
File No. 204745 Fee \$ 19.00

Greencastle U.S.A., Ltd.
Mining Claim Map
Easter 1
Lode Mining Claim
May 5, 2006 DRB

Map scale 1"=500'