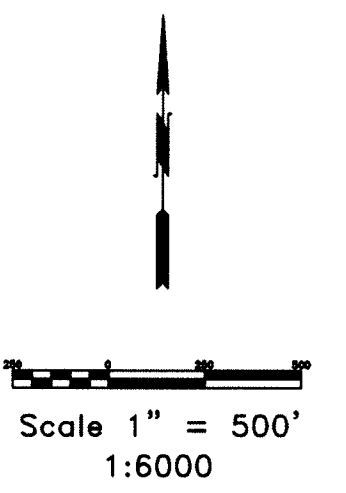
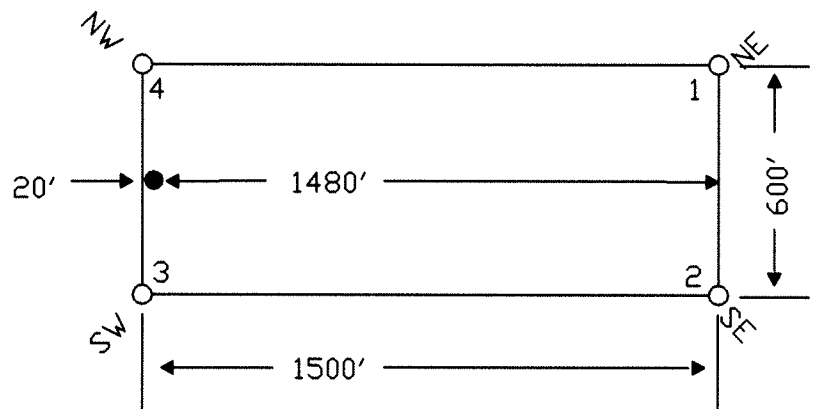


TYPICAL CLAIM



TIE POINT DATA:  
 THE NORTHEAST CORNER OF PHOENIX 896 LIES APPROXIMATELY  
 105 FEET EAST AND 3,767 FEET SOUTH OF THE NORTHEAST CORNER  
 OF SECTION 22, T.26N., R.52E., M.D.B.M.

22

863	••	862	•	896
865	••	864	•	897
867	••	866	•	898
869	••	868	•	899
871	••	870	•	900
873	••	872	•	901
875	••	27 874	•	902
877	••	876	•	903
879	••	878	•	904
881	••	880	•	905
883	••	882	•	906
885	••	884	•	907
887	••	886	•	908
889	••	888	•	909
891	••	890	•	910
893	••	34 892	•	911
895	••	894	•	912

913  
••  
914  
••  
915  
••  
916

26

35

LOCATION DATES:  
 March 1, 2006 - Phoenix 862-916  
 (55 Total Claims)

NOTES:  
 LOCATION MONUMENTS SET 20' FROM CLAIM END  
 CENTERLINES. ALL LOCATION MONUMENTS AND CLAIM  
 POSTS ARE 2"x2"x4' WOODEN STAKES.  
 DASHED SECTION LINES INDICATE PROJECTED SECTIONS.

FILED AT THE REQUEST OF *Golden Gryphon*  
 on *3-26-2006* at *11* :*44* AM  
 RECORDS OF EUREKA COUNTY, NEVADA  
 M.N. REBALEATI, Recorder  
 File No. **204847** Fee \$ *829.00*



369 - 5th STREET  
 PH: (775) 778-0668 ELKO, NV 89801 FAX: (775) 778-0667

Locator: Golden Gryphon USA Inc.  
 1400 Tanager place RR21, Roberts Creek, BC V0N 2W1  
 Phoenix 862-916 Lode Claims  
 T.26N., R.52E; Eureka County, Nevada

DATE: April 2006  
 JACO FILE NAME: *Golden Gryphon 2006 loc 206.dwg*  
 PLOT SCALE: 1" = 500'

DRAWN BY: *BTB*