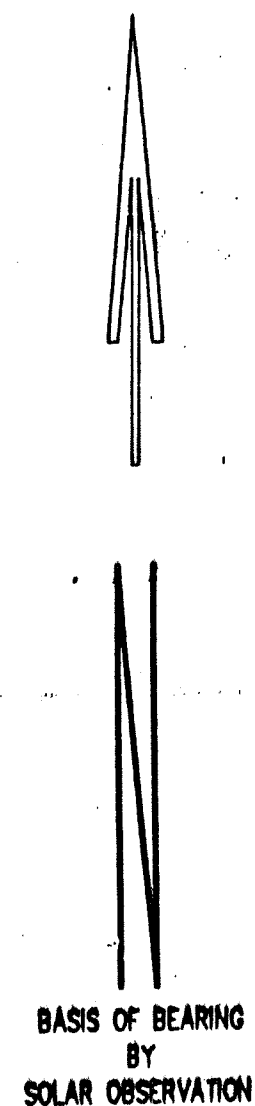
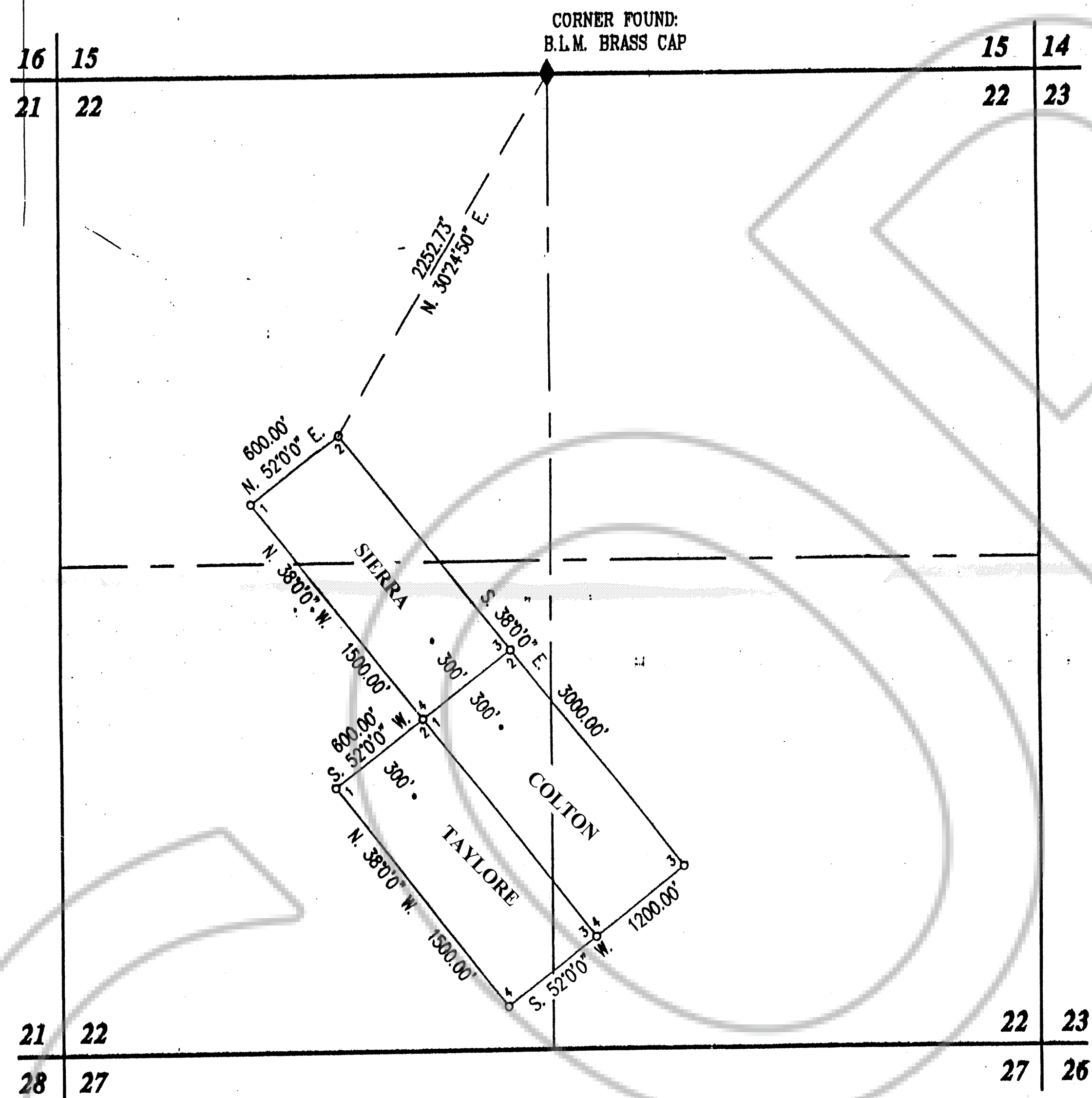
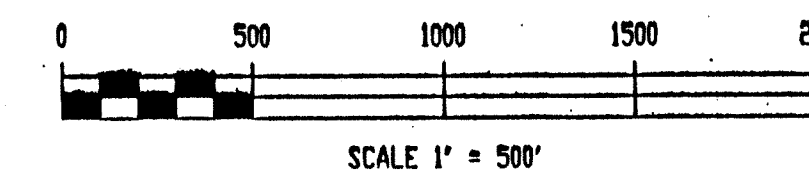


T.35 N., R.50 E., M.D.B. & M.



NOTES

1. All Lode claims are 800 feet by 1500 feet with Location Monuments 300 feet from the end lines unless noted.
2. All corners and location monuments are 2" x 2" x 4' long wood posts
3. The claims were located by: CHUCK PETERSEN
1940 EAST IDAHO STREET
ELKO, NEVADA 89801
4. TAYLORE COLTON AND SIERRA were located on May 4th, 2006
5. There are a total of 3 claims.



FILED AT THE REQUEST OF *Chuck Petersen*
on 5/21/06 at 11:46 mins. past 9:41 A.M.
RECORDS OF EUREKA COUNTY, NEVADA
J.N. REBALEATI, Recorder
File No. 204857 Fee \$ 44.00

MAP SHOWING
TAYLORE, COLTON, & SIERRA
LODE MINING CLAIMS
LOCATED BY
CHUCK PETERSEN
IN
T.35 N., R.50 E., M.D.B. & M.
EUREKA COUNTY, NEVADA