

10

11

GFE 2	GFE 4	GFE 6	GFE 8	GFE 10	GFE 12	GFE 14	GFE 16	GFE 18	GFE 20		
⋮	⋮	⋮	⋮	⋮	⋮	⋮	⋮	⋮	⋮	⋮	⋮
GFE 1	GFE 3	GFE 5	GFE 7	GFE 9	GFE 11	GFE 13	GFE 15	GFE 17	GFE 19	GFE 21	GFE 22

15

14

GFE 23	GFE 24	GFE 26	GFE 28	GFE 30	GFE 32	GFE 34	GFE 36	GFE 38	GFE 40		
⋮	⋮	⋮	⋮	⋮	⋮	⋮	⋮	⋮	⋮	⋮	⋮

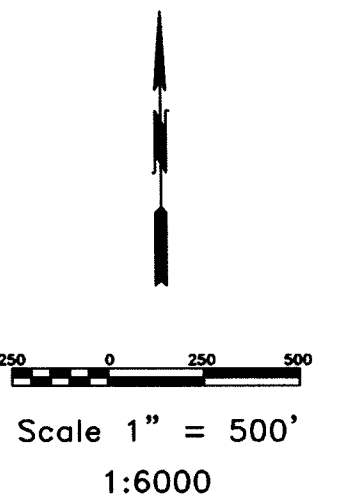
GFE 25	GFE 27	GFE 29	GFE 31	GFE 33	GFE 35	GFE 37	GFE 39	GFE 41
-----------	-----------	-----------	-----------	-----------	-----------	-----------	-----------	-----------

GFE 42	GFE 43	GFE 44	GFE 45	GFE 46	GFE 47
-----------	-----------	-----------	-----------	-----------	-----------

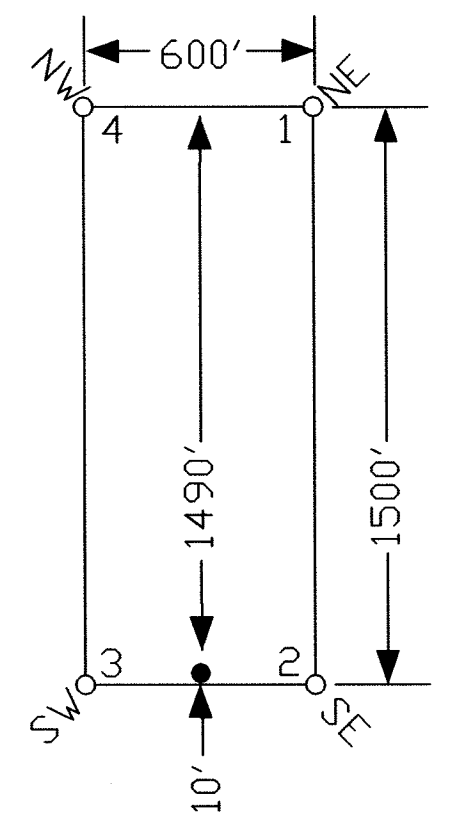
22

23

Elko County
Eureka County



TYPICAL CLAIM



TIE POINT DATA:
THE SOUTHWEST CORNER OF GFE 1 LIES APPROXIMATELY
107 FEET EAST AND 2,744 FEET SOUTH OF THE NORTHWEST
CORNER OF SECTION 15, T.26N., R.54E., M.D.B.M.

LOCATION DATES:
March 17, 2006 - GFE 1-47

(47 Total Claims)

NOTES:
LOCATION MONUMENTS SET 10' FROM CLAIM END
CENTERLINES. ALL LOCATION MONUMENTS AND CLAIM
POSTS ARE 2"x2"x4' WOODEN STAKES.

DASHED SECTION LINES INDICATE PROJECTED SECTIONS.

FILED AT THE REQUEST OF *Churn Hill Gold*
in *6/13/06* at *3:2* mins. past *10 A.M.*
RECORDS OF EUREKA COUNTY, NEVADA
J.N. REBALEATI, Recorder
File No. *205282* Fee \$ *229.00*
Claims #25, 27, 29, 31, 33, 35, 37, 39, 41 - 47

	Locator: Churn Hill Gold LLC 785 Andrew Lane, Reno, Nevada 89521 GFE 1-47 Lode Claims T.26N., R.54E.; Elko & Eureka County, Nevada	
	DATE: May 2006	ACAD FILE NAME: <i>churn hill gfe 1-47.dwg</i> PLOT SCALE: 1" = 500'
369 - 5th STREET PH: (775) 778-0668 ELKO, NV 89801 FAX: (775) 778-0687		DRAWN BY: sims