

DRAWING NUMBER

DRAWING NUMBER

DRAWING NUMBER

182

DRAWING NUMBER

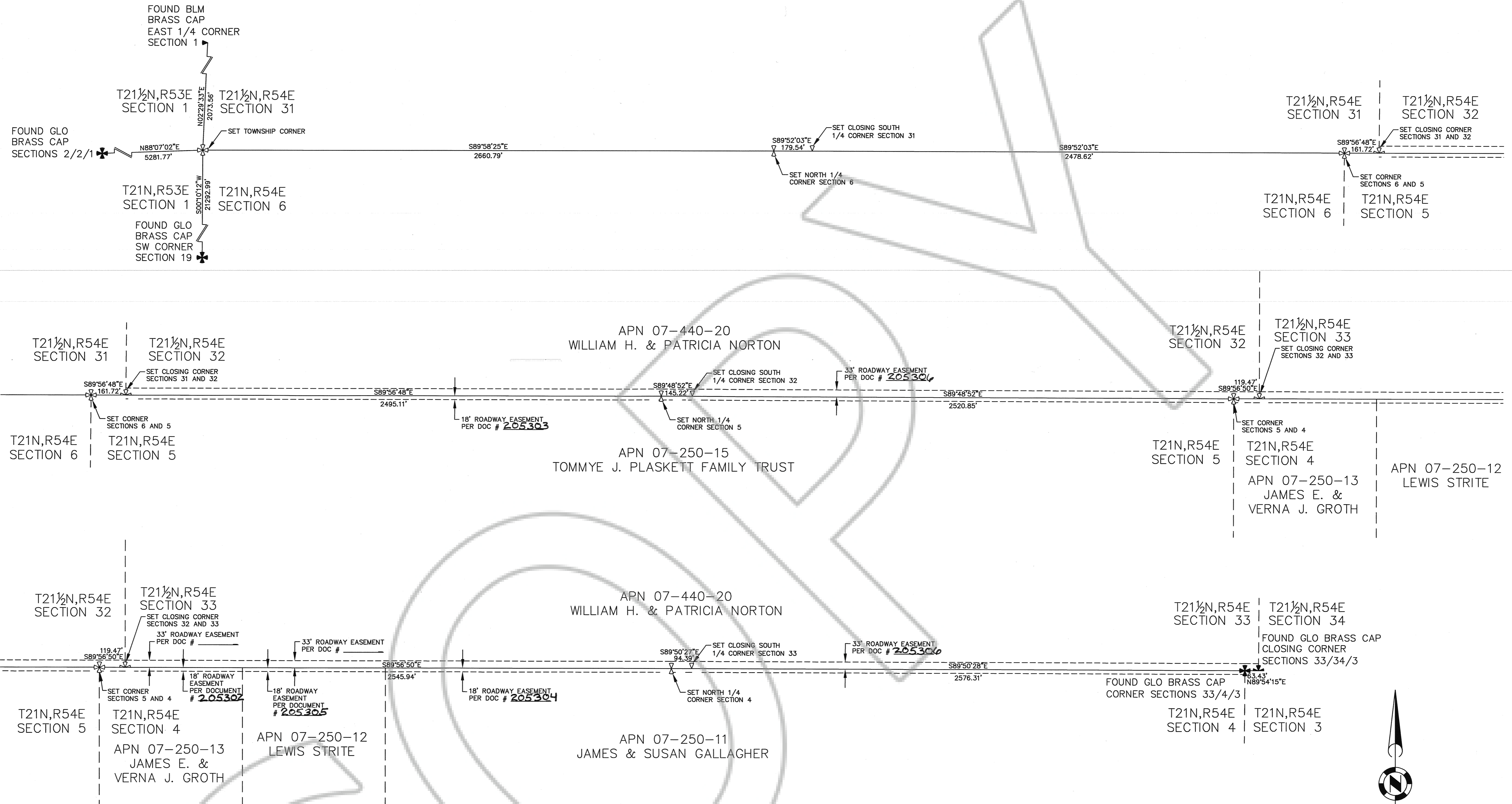
Richard B. Survey
12th Street
Easements

SACED PRODUCTS • NEWY HURVE, MINNESOTA
REGISTERED BY PART NUMBER 6551

SACED PRODUCTS • NEWY HURVE, MINNESOTA
REGISTERED BY PART NUMBER 6551

SACED PRODUCTS • NEWY HURVE, MINNESOTA
REGISTERED BY PART NUMBER 6551

SACED PRODUCTS • NEWY HURVE, MINNESOTA
REGISTERED BY PART NUMBER 6551



REFERENCE DOCUMENTS

B.L.M. PROTRACTION DIAGRAM FOR TOWNSHIP 21 NORTH, RANGES 54 & 55 EAST M.D.B.&M. DATED MAY 17, 1965.

G.L.O. SURVEY PLAT AND FIELD NOTES FOR TOWNSHIP 21 1/2 NORTH, RANGE 54 EAST, M.D.B.&M. DATED APRIL 13, 1939.

EUREKA COUNTY ASSESSOR'S PARCEL MAPS 07-25 AND 07-44.

TENTATIVE MAP FOR CLAUDIE BAGGET DOCUMENT NUMBER 79127 (69034) DATED AUGUST 20, 1979 EUREKA COUNTY RECORDS.

LEGEND

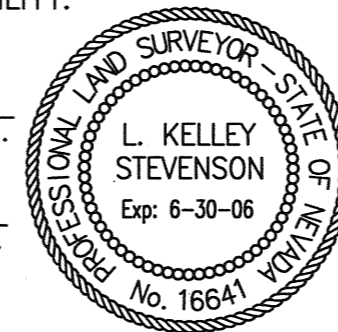
- ⊕ SECTION CORNER MONUMENT FOUND
- ⊗ SECTION CORNER MONUMENT SET, 5/8" REBAR WITH A 2 1/2" ALUMINUM CAP STAMPED "PLS 16641".
- ⊠ 1/4 CORNER MONUMENT FOUND
- ⊠ 1/4 CORNER MONUMENT SET, 5/8" REBAR WITH A 2 1/2" ALUMINUM CAP STAMPED "PLS 16641".
- ⊠ CLOSING SECTION CORNER MONUMENT FOUND
- ⊠ CLOSING SECTION CORNER MONUMENT SET, 5/8" REBAR WITH A 2 1/2" ALUMINUM CAP STAMPED "PLS 16641".
- ⊠ CLOSING 1/4 CORNER MONUMENT SET, 5/8" REBAR WITH A 2 1/2" ALUMINUM CAP STAMPED "PLS 16641".
- ⊕ REFERENCE MONUMENT FOUND
- ⊕ REFERENCE MONUMENT SET, 5/8" REBAR WITH A 2 1/2" ALUMINUM CAP STAMPED "PLS 16641".
- ROADWAY EASEMENT
- - - PROPERTY LINE

SURVEYOR'S CERTIFICATE

I, L. KELLEY STEVENSON, A PROFESSIONAL LAND SURVEYOR LICENSED IN THE STATE OF NEVADA, CERTIFY THAT:

- THIS PLAT REPRESENTS THE RESULTS OF A SURVEY CONDUCTED UNDER MY DIRECT SUPERVISION AT THE INSTANCE OF EUREKA COUNTY.
- THE LANDS SURVEYED LIE WITHIN A PORTION OF TOWNSHIP 21 NORTH RANGE 54 EAST, AND TOWNSHIP 21 1/2 NORTH RANGE 54 EAST. MOUNT DIABLO BASELINE AND MERIDIAN AND THE SURVEY WAS COMPLETED ON APRIL 17, 2006.
- THE SURVEY WAS COMPLETED AND THE SURVEY WAS CONDUCTED IN ACCORDANCE WITH CHAPTER 625 OF THE NEVADA ADMINISTRATIVE CODE.
- THE MONUMENTS DEPICTED ON THE PLAT ARE OF THE CHARACTER SHOWN, OCCUPY THE POSITIONS INDICATED AND ARE OF SUFFICIENT NUMBER AND DURABILITY.

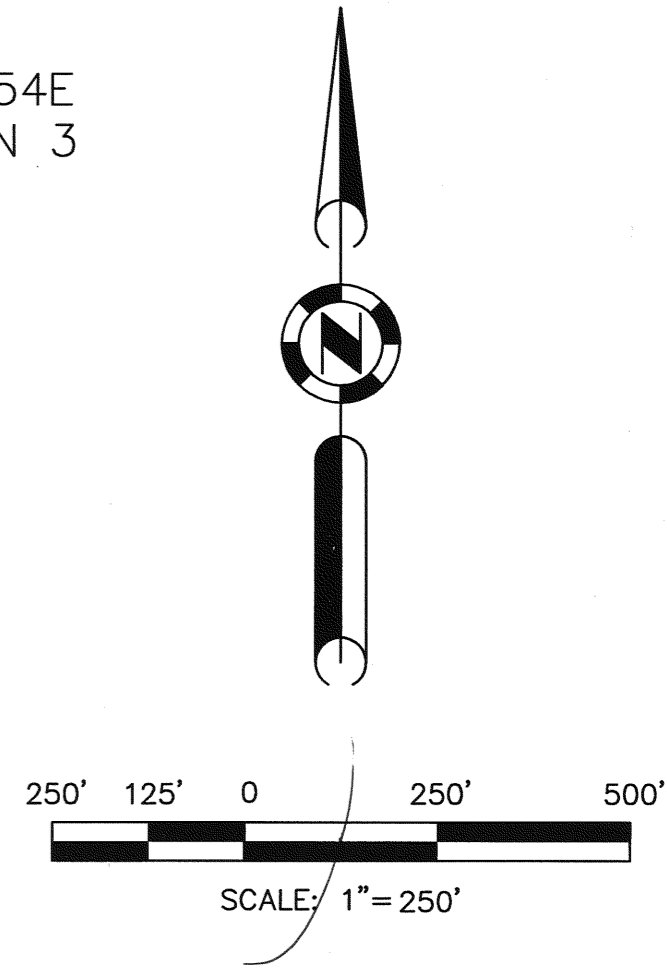
L. KELLEY STEVENSON, NV PLS 16641
 June 13, 2006
 DATE



BASIS OF BEARING

THE BASIS OF BEARING FOR THIS SURVEY IS THE BEARING BETWEEN THE SOUTHWEST CORNER OF SECTION 19, T21N, R54E, M.D.B.&M. AND THE NORTHWEST CORNER OF SECTION 6, T21N, R54E, M.D.B.&M. AND IS DETERMINED TO BE NORTH 0°10'45" WEST.

ALL DISTANCES SHOWN ARE GROUND.



SHEET 1 OF 2
 (FOR DETAILS OF REFERENCE MONUMENTS SEE SHEET 2 OF 2)

FILE NO: 205301
 FILED FOR RECORD AT THE REQUEST OF LUMOS AND ASSOCIATES.
 THIS 19th DAY OF June, 2006,
 AT 26 MINUTES PAST 2 O'CLOCK P.M., IN THE OFFICIAL RECORDS OF EUREKA COUNTY, NEVADA
 MN Rebaleaty
 COUNTY RECORDER
 BY: Francine Steinet
 DEPUTY
 FEE: None

RECORD OF SURVEY FOR EUREKA COUNTY

LYING WITHIN A PORTION OF TOWNSHIP 21 NORTH, RANGE 54 EAST AND TOWNSHIP 21 1/2 NORTH, RANGE 54 EAST, M.D.B.&M. COUNTY OF EUREKA, STATE OF NEVADA

LUMOS & ASSOCIATES
 800 E. COLLEGE PKWY
 CARSON CITY NEVADA 89706
 TEL: 775.883.7077 FAX: 775.883.7114

DRAWN BY: RPC
 DATE: 01 JUN 2006
 JOB NUMBER: 6650.003
 DRAWING NO: 6650003ROS01JUN2006.DWG

DRAWING NUMBER

DRAWING NUMBER

DRAWING NUMBER
205301

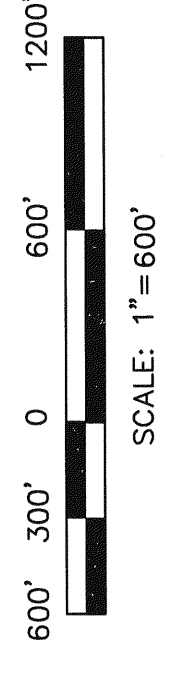
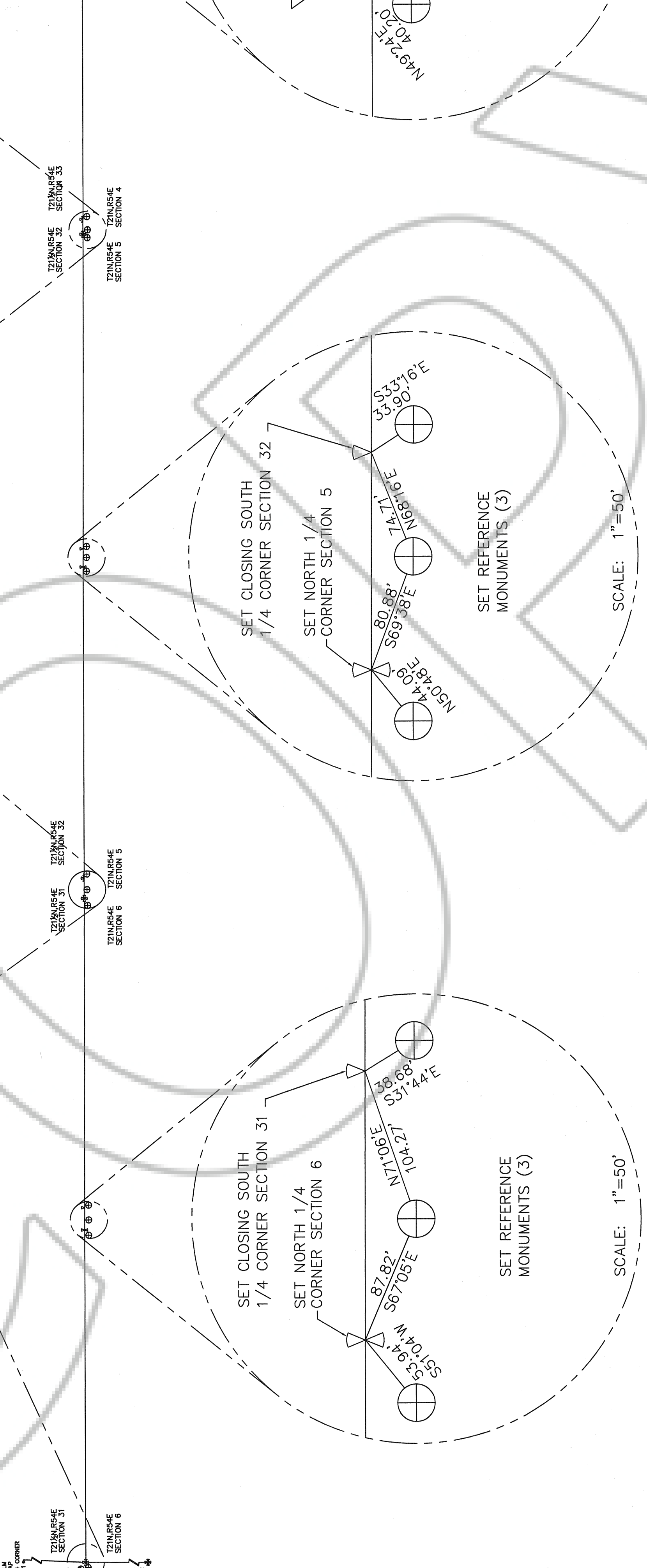
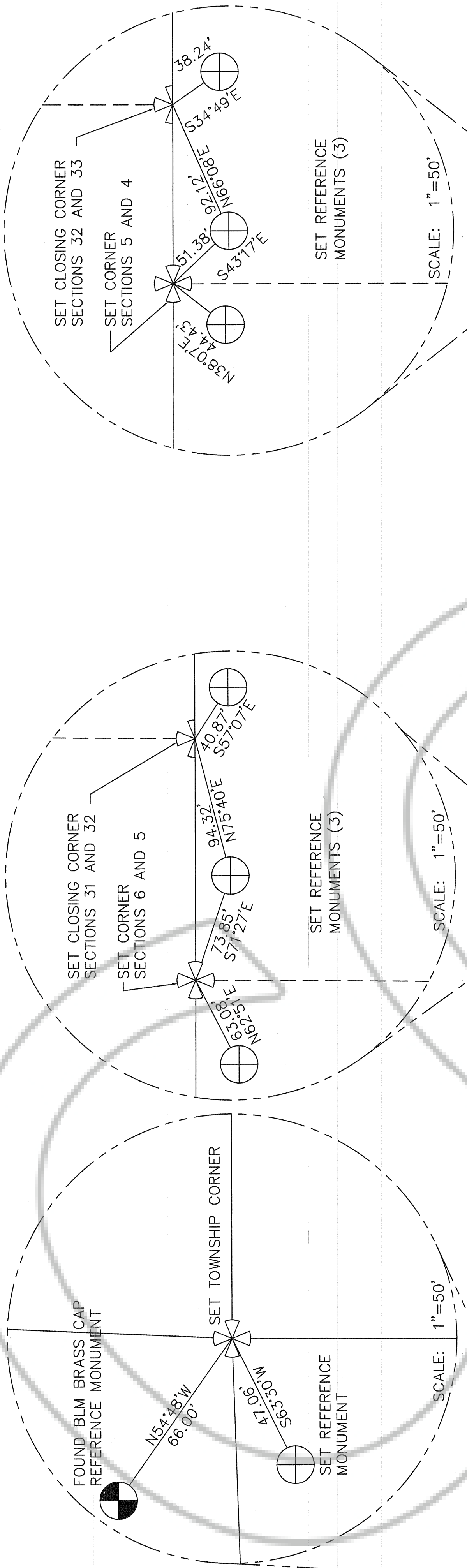
DRAWING NUMBER
Record Survey
1st Street Beaumont

SAPCO PRODUCTS • NEW HOPE, MINNESOTA
REORDER BY PART NUMBER 8551

SAPCO PRODUCTS • NEW HOPE, MINNESOTA
REORDER BY PART NUMBER 8551

SAPCO PRODUCTS • NEW HOPE, MINNESOTA
REORDER BY PART NUMBER 8551

SAPCO PRODUCTS • NEW HOPE, MINNESOTA
REORDER BY PART NUMBER 8551



LEGEND

- ⊕ SECTION CORNER MONUMENT FOUND
- ⊗ SECTION CORNER MONUMENT SET, 5/8" REBAR WITH A 2 1/2" ALUMINUM CAP STAMPED "PLS 16641"
- ⊙ 1/4 CORNER MONUMENT FOUND
- ⊘ 1/4 CORNER MONUMENT SET, 5/8" REBAR WITH A 2 1/2" ALUMINUM CAP STAMPED "PLS 16641"
- ⊚ CLOSING SECTION CORNER MONUMENT FOUND
- ⊛ CLOSING SECTION CORNER MONUMENT SET, 5/8" REBAR WITH A 2 1/2" ALUMINUM CAP STAMPED "PLS 16641"
- ⊜ CLOSING SECTION CORNER MONUMENT SET, 5/8" REBAR WITH A 2 1/2" ALUMINUM CAP STAMPED "PLS 16641"
- ⊝ REFERENCE MONUMENT FOUND
- ⊞ REFERENCE MONUMENT SET, 5/8" REBAR WITH A 2 1/2" ALUMINUM CAP STAMPED "PLS 16641"

DETAIL OF REFERENCE MONUMENTS; SHEET 2 OF 2

RECORD OF SURVEY
FOR
EUREKA COUNTY
 LYING WITHIN A PORTION OF TOWNSHIP 21 NORTH, RANGE 54 EAST
 AND TOWNSHIP 21 1/2 NORTH, RANGE 54 EAST, M.D.B.&M.
 COUNTY OF EUREKA, STATE OF NEVADA

LUMOS & ASSOCIATES
 800 E. COLLEGE BLVD.
 CARSON CITY
 NEVADA 89706
 TEL: 775-883-7077
 DRAWING NO: 865003R0501UN2006.DWG
 FAX: 775-883-7114

205301