

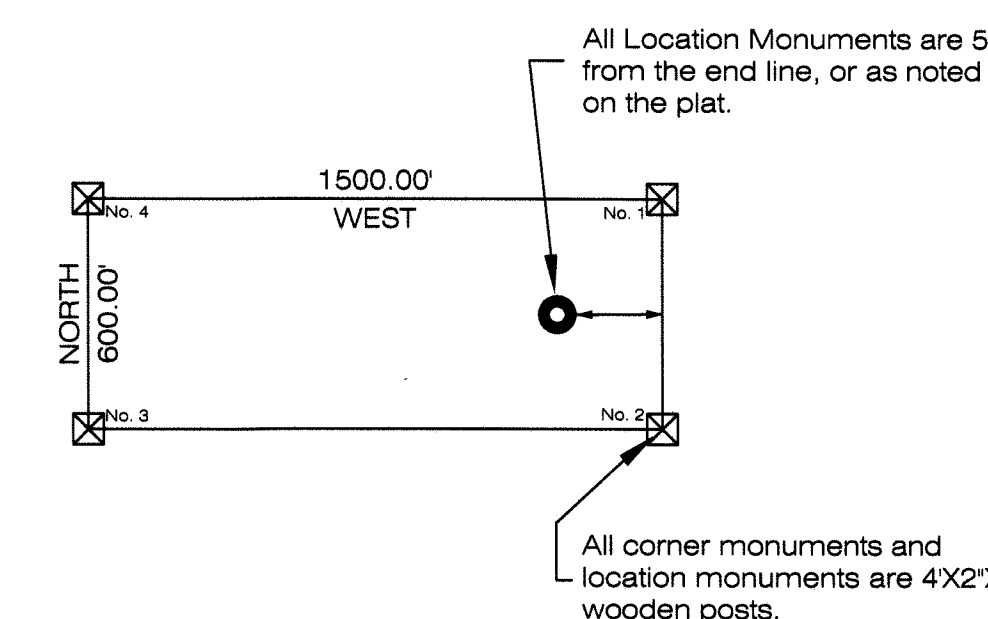
## SURVEYOR'S CERTIFICATE

I, John D. Hammeling, A Professional Land Surveyor (PLS 12062) Licensed in The State Of Nevada, certify that:

- 1) This plat represents the results of a survey conducted under my direct supervision at the instance of Tonkin Springs, LLC (owner).
- 2) The mining claims surveyed lie within T24N, R48 1/2E, MDM, Sections 13 & 24 and T24N, R49E, MDM, Sections 18 & 19; and the survey was completed on June 22, 2006.
- 3) This plat complies with applicable statutes of this state and any local ordinances in effect on the date that the survey was completed, and the survey was conducted in accordance with Chapter 625 of the Nevada Administrative Code.
- 4) The monuments depicted on the plat are of the character shown, occupy the positions indicated and are of sufficient number and durability.
- 5) The Section lines protracted on this map are from the BLM GCDB.

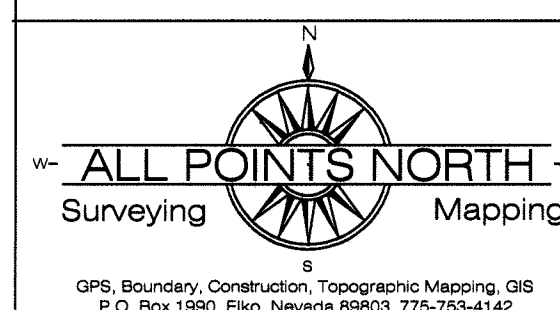
*John D. Hammeling*  
 exp. 6/30/07  
 8/6/06

Typical Claim  
 unless otherwise noted



Found GLO brass cap for the  
 East 1/4 corner of Section 34,  
 T24N, R49E, MDM.

FILED AT THE REQUEST OF *Tonkin Springs*  
 on 8/8 2006, at 20 mins. past 9 A.M.  
 RECORDS OF EUREKA COUNTY, NEVADA  
 J. N. REPALEATI, Recorder  
 FLS No. 205586 Fee \$ 619.00



All Points North  
 P.O. Box 1990  
 Elko, Nevada 89803

Claims in T24N, R48 1/2E, MDM, Sections 13 & 24  
 and T24N, R49E, MDM, Sections 18 & 19  
 Eureka County, Nevada

Map Of:

Lode Claims A 33S - A 41S, A 52S- A 58S, A 248S, A 249S  
 Lode Claims NC 73S - NC 75S, NC 86S - NC 94S,  
 NC 99S - NC 107S, NC 138S, NC 139S

Located For:

Tonkin Springs, LLC  
 675 Sierra Rose Drive  
 Reno, Nevada 89511