

R52E R53E

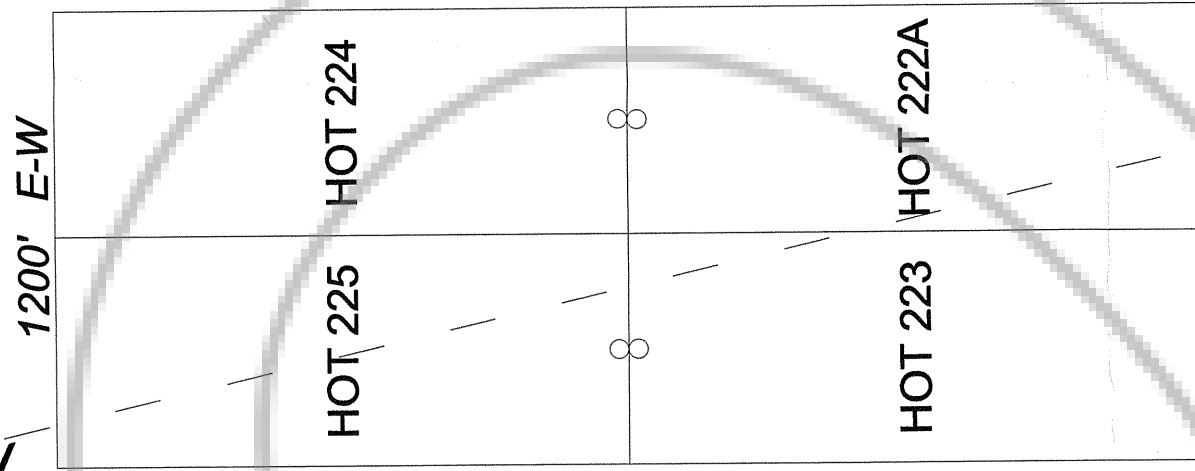
36

30

29

ELKO COUNTY
EUREKA COUNTY

205600



T28N

1

31

32

T28N

R52E R53E

**Platte River Gold (US) Inc. Unpatented Lode mining claims
ELKO/EUREKA COUNTIES, NEVADA**

HOT 222A through HOT 225

The above claims are located in surveyed Section 31, T 28 N, R 53 E,
Mt. Diablo Meridian.

LOCATION DATE: June 19, 2006: HOT 222A, HOT 223 - HOT 225

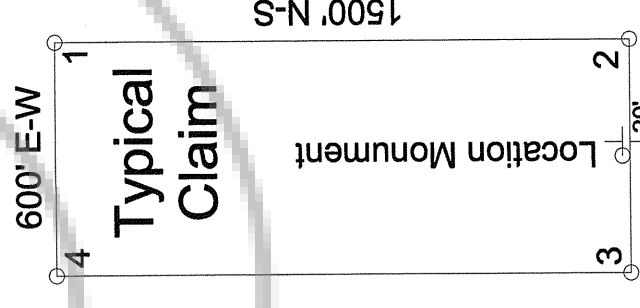
TIE POINT:

The SE corner of HOT 224 is located approximately 3,110 feet south and
2,743 feet west of the NE corner, Section 31, T. 28 N., R. 53 E., Mount Diablo
Meridian

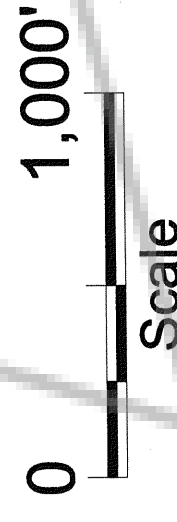
LOCATOR:

Platte River Gold (U.S.) Inc.
5401 Longley Lane, Suite 14
Reno, NV 89511

DRAWN BY: H. FATZER
DATE: August 2006



N



U.S. Survey Foot

Sections are
projected using
GCDB, Nevada State
Plane 1927.

All claims are 1500' x 600'.
All monuments are 2" x 2" x
4' wooden posts. Location
monuments are set 20' inside
claim boundary unless
otherwise noted.