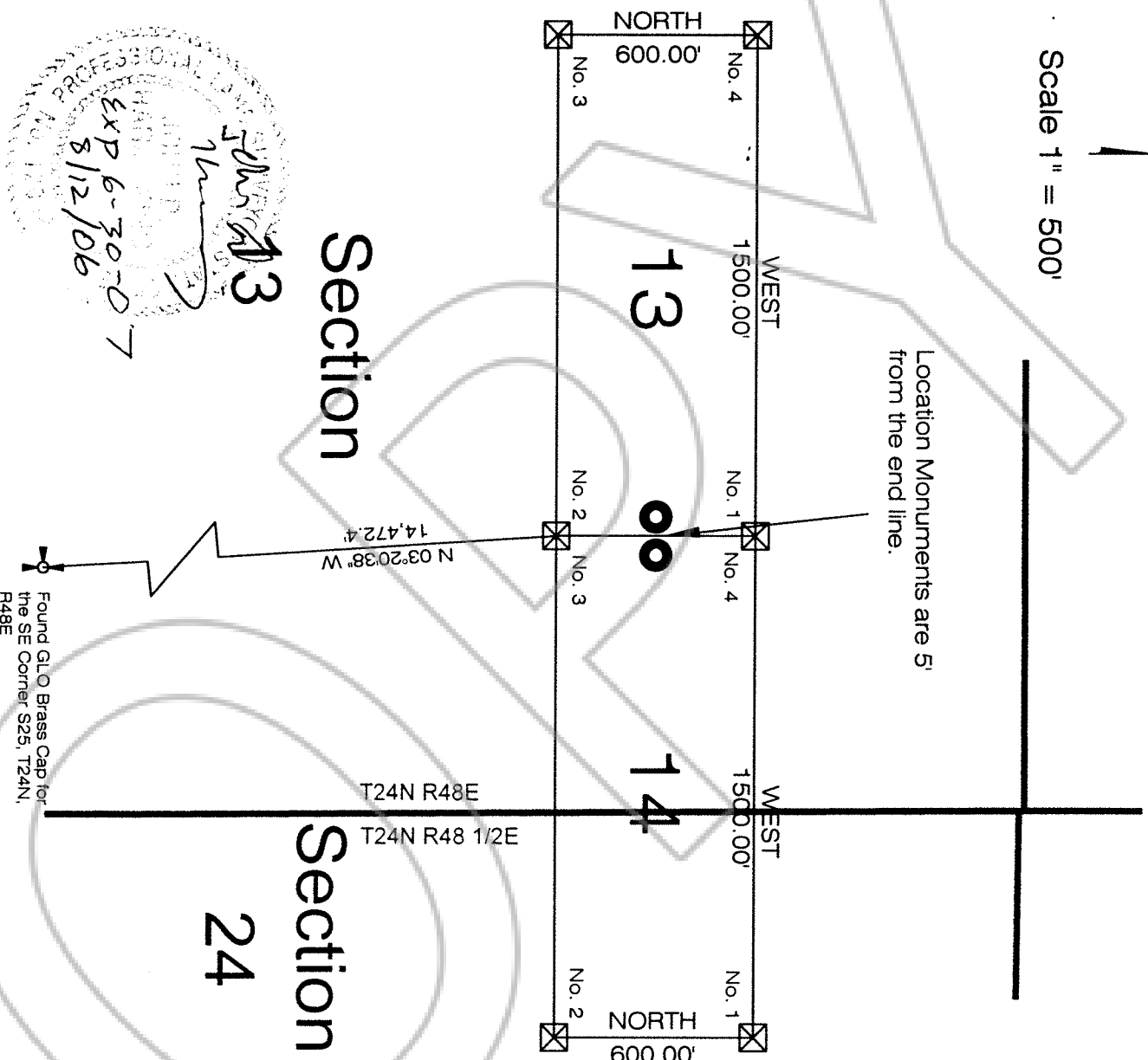


Map 1 of 5 of the Flyboy Lode Claims



Scale 1" = 500'

Location Monuments are 5'
from the end line.



SURVEYOR'S CERTIFICATE

I, John D. Harmenting, A Professional Land Surveyor (PLS 12062) Licensed in The State Of Nevada, certify that:

- 1) This plat represents the results of a survey conducted under my direct supervision at the instance of Tonkin Springs, LLC (owner).
- 2) The mining claims surveyed lie within T24N, R48E, MDM, Section 13 and T24N, R48 1/2E, MDM, Section 24; and the survey was completed on June 23, 2006.
- 3) This plat complies with applicable statutes of this state and any local ordinances in effect on the date that the survey was completed, and the survey was conducted in accordance with Chapter 625 of the Nevada Administrative Code.
- 4) The monuments depicted on the plat are of the character shown, occupy the positions indicated and are of sufficient number and durability.
- 5) The Section lines protracted on this map are from the BLM GCDDB.

All Points North
P.O. Box 1990
Eiko, Nevada 89803
775-753-4142

Claims in T24N, R48E, MDM, Section 13 &
T24N, R48 1/2E, MDM, Section 24
Eureka County, Nevada

Located For:
Tonkin Springs, LLC
675 Sierra Rose Drive
Reno, Nevada 89511

FILED AT THE REQUEST OF Tonkin Springs
on 8/15/2006, at 32 mins. past 1 PM
RECORDS OF EUREKA COUNTY, NEVADA

M.N. REBALEATI, Recorder

File No. 205708

Fee \$ 34