

Alrat # 1-4  
Lode Claims

Ratto Spring

Tie Point #1

From Ratto Spring located in projected NW cor. Sec. 27, Unsurveyed Tws. 18N, R. 53E, MDBM, it is 1956' on an Azimuth Bearing of 145.50° to the NW cor.-4- of Alrat # 2 claim.

Alrat # 1-4 Lode Claims

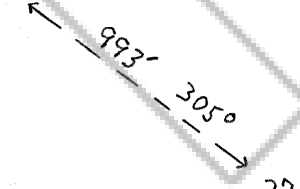
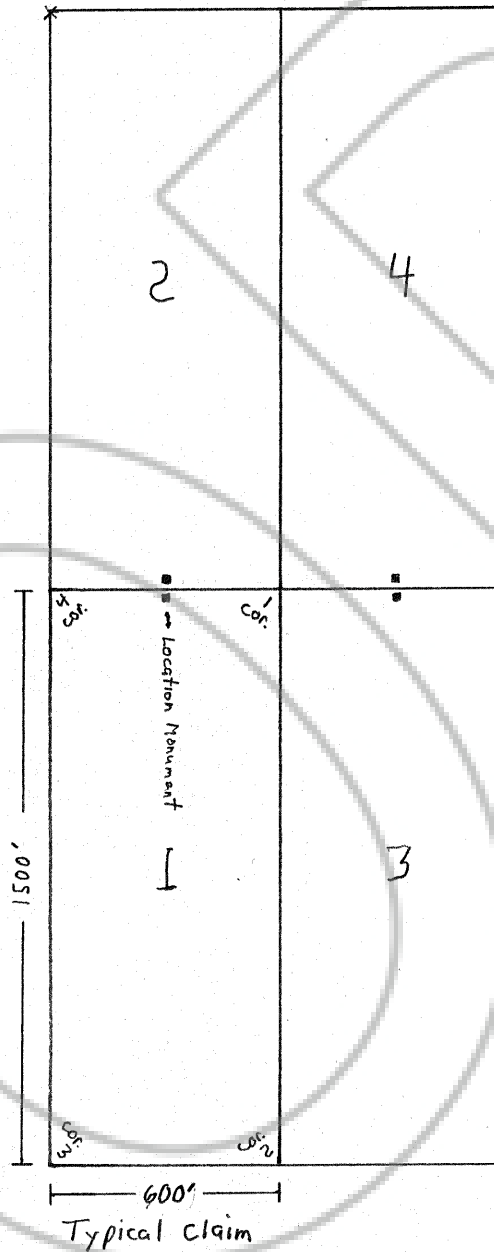
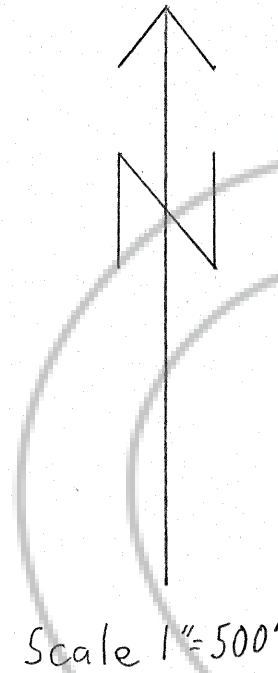
Located on: 5-25-06  
Located by: Tim Neal  
3300 Skyline Blvd. #325  
Reno, Nevada 89509

Jim Marin  
6192 Calvary Court  
Marysville, Calif. 95954

Located in: Sections 27, 34, T. 18N, R. 53E, MDBM  
Eureka Mining District  
Eureka County, Nevada

All claims are 1500 ft. long in a N-S direction and 600 ft. wide in an E-W direction.

Claims are located such that 20' is claimed in one direction and 1480' is claimed in a 180° opposite direction from location monument which is situated on N-S centerline of claims, together with 300' on each side of location monument and centerline of claims.



27	26	T. 18N, R. 53E MDBM
34	35	

Tie Point #2

From Projected Section Corner for Sections 26, 27, 34, 35, T. 18N, R. 53E, MDBM, it is 993 ft. on an Azimuth Bearing of 305° to the NE cor.-1- of the Alrat # 3 lode claim.

FILED AT THE REQUEST OF Tim Neal/James Marin  
on 8/21 20 06, at 53 mins. past 2 A M  
RECORDS of EUREKA COUNTY, NEVADA  
M.N. REBALATI, Recorder  
File No. 205748 Fee \$ 64.00

Alrat # 1-4 Lode Claims