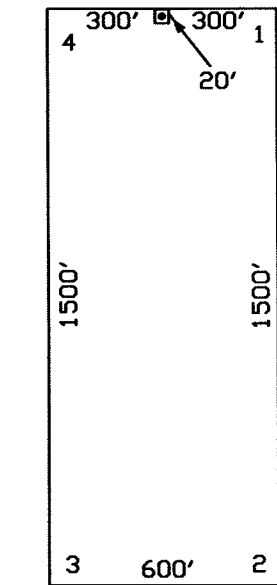
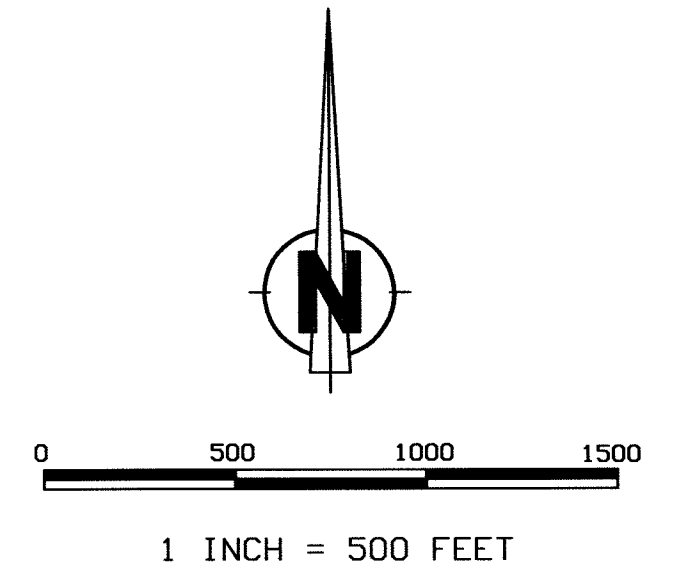
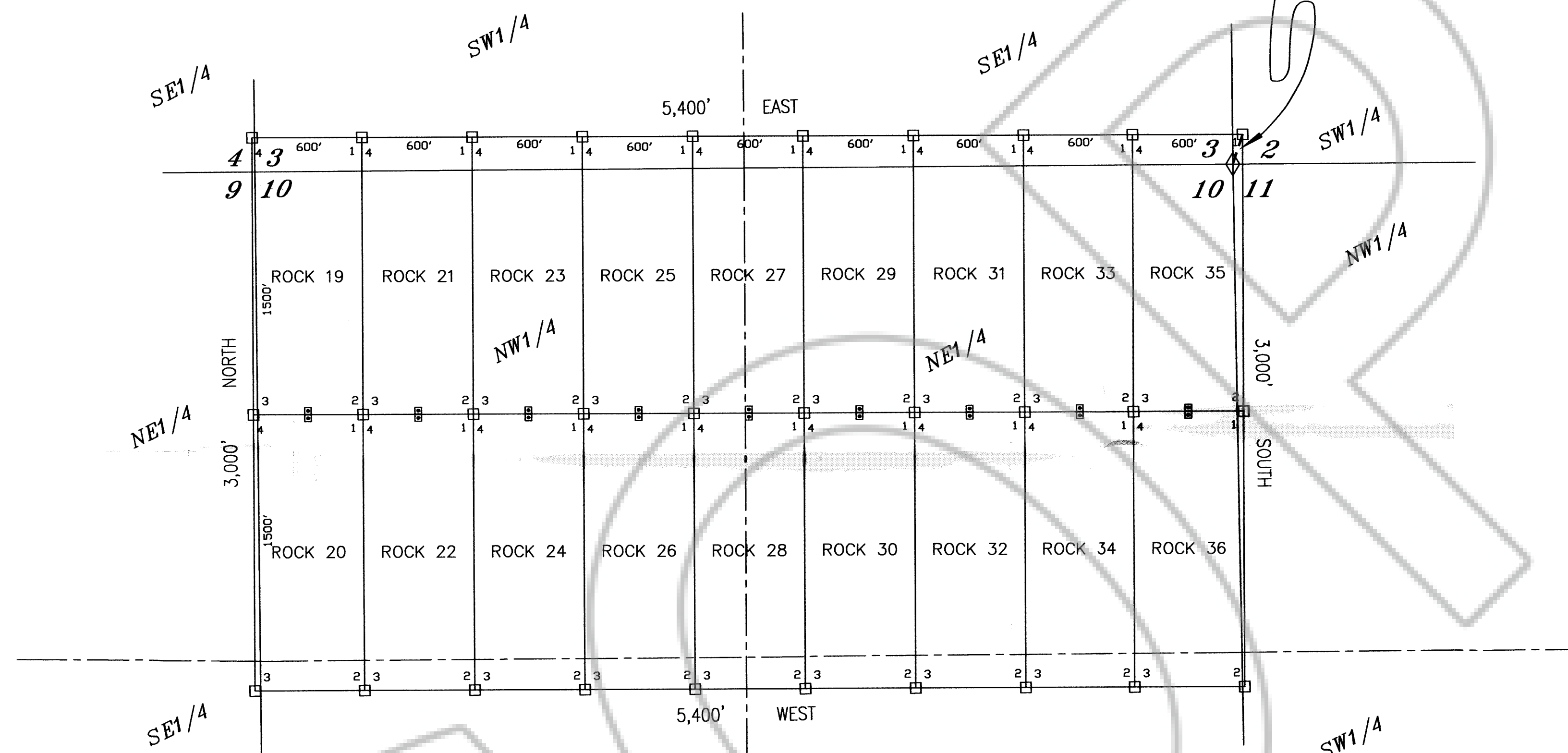


T35N, R49E, M.D.M.



TYPICAL LODGE CLAIM
UNLESS OTHERWISE SHOWN
LOCATION MONUMENT MAY LIE AT EITHER END OF THE CLAIM

TIE POINT:
The NE corner of ROCK 35 is located
170 feet N. 18°13'38"E. from the
found SW corner of Section 2,
T35N, R49E, M.D.M.



OWNER:

NEWMONT USA LIMITED d/b/a
NEWMONT MINING CORPORATION
555 FIFTH STREET
ELKO, NEVADA 89801

LEGEND:

- = 2" x 2" x 4'
WOOD POST CLAIM CORNER
- = 2" x 2" x 4'
WOOD POST LOCATION MONUMENT
- ◇ = FOUND SURVEY MONUMENT

NOTES:

ALL LOCATION MONUMENTS AND CLAIM CORNERS
ARE 2" x 2" x 4" WOOD.

LOCATION MONUMENTS ARE SET ON THE CENTERLINE
OF EACH CLAIM,
20 FEET FROM THE NEAR ENDLINE AND
1480 FEET FROM THE OPPOSITE ENDLINE,
UNLESS OTHERWISE SHOWN.

ALL CLAIMS ARE 1500' LONG BY 600' WIDE

FILED BY THE REQUEST OF *Newmont*
in *8/21/06* mins. past *11 A*
RECORDS OF EUREKA COUNTY NEVADA
N. REBELEATH, CLERK
File No. *205878* Fee \$ *274.00*

CLAIM MAP OF

ROCK 19-36

Lode Claims located within
Sections 2-4 and 9-11, T35N, R49E, M.D.M.
Eureka County, Nevada

NEWMONT MINING CORPORATION