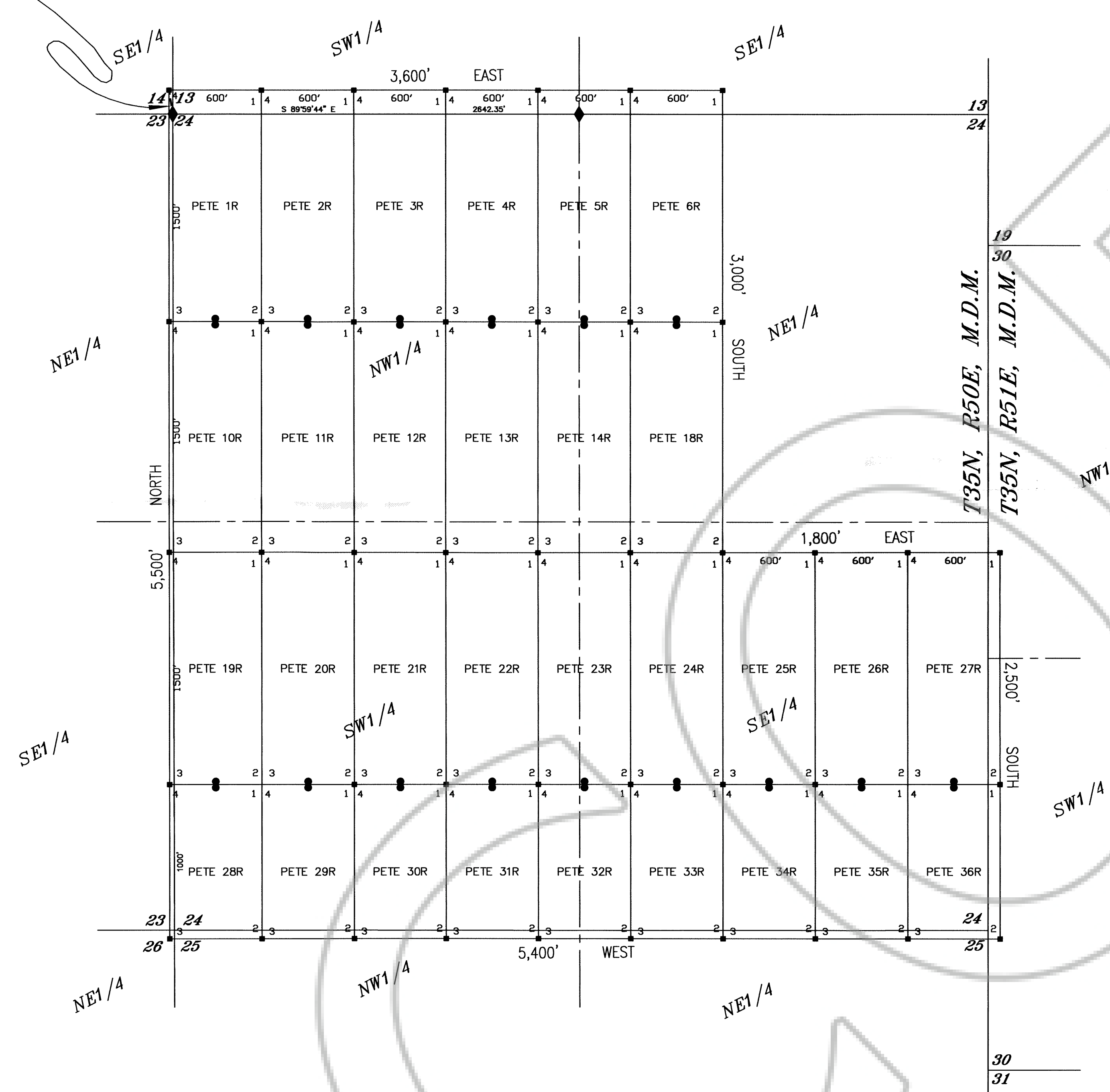


TIE POINT:
The NW corner of PETE 1R is located
157.73 feet N. 09°09'33"W. from the
found NW corner of Section 24,
T35N, R50E, M.D.M.



OWNER:

NEWMONT USA LIMITED d/b/a
NEWMONT MINING CORPORATION
555 FIFTH STREET
ELKO, NEVADA 89801

LEGEND:

- = 2" x 2" x 4' WOOD POST CLAIM CORNER
- = 2" x 2" x 4' WOOD POST LOCATION MONUMENT
- ◆ = FOUND SURVEY MONUMENT

NOTES:

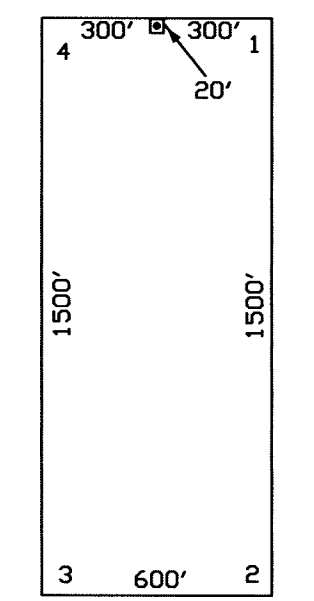
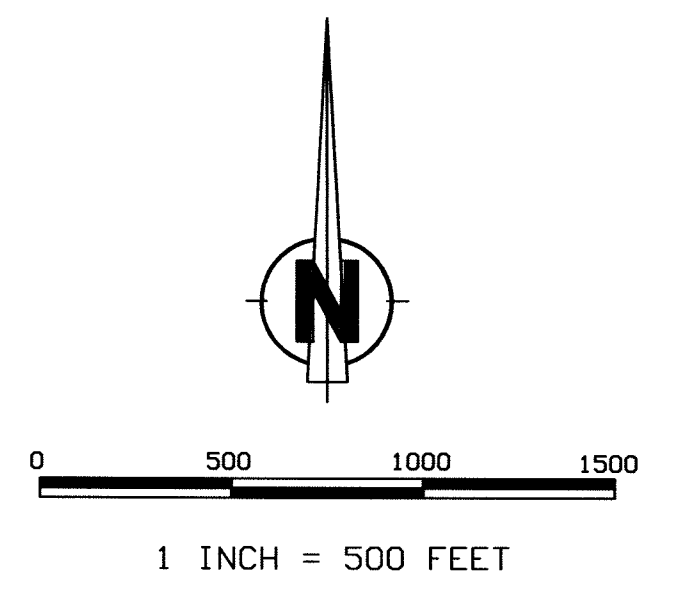
ALL LOCATION MONUMENTS AND CLAIM CORNERS
ARE 2" x 2" x 4' WOOD.

LOCATION MONUMENTS ARE SET ON THE CENTERLINE
OF EACH CLAIM,

20 FEET FROM THE NEAR ENDLINE AND 1,480 FEET FROM THE
OPPOSITE ENDLINE, EXCEPT PETE 28R - 36R WHICH ARE 20 FEET
FROM NEAR ENDLINE AND 980 FEET FROM OPPOSITE ENDLINE.

ALL CLAIMS ARE 1,500' LONG BY 600' WIDE EXCEPT PETE 28R - PETE 36R WHICH
WHICH ARE 1000' LONG BY 600' WIDE.

BASIS OF BEARING: NORTH LINE SECTION 24, T35N, R50E, MDM FROM
THE NW CORNER AT 589°59'44"E TO THE NORTH QUARTER CORNER.



TYPICAL LODGE CLAIM
UNLESS OTHERWISE SHOWN
LOCATION MONUMENT MAY LIE AT EITHER END OF THE CLAIM

FILED AT THE REQUEST OF *Newmont*
on *8/29/06* at *4:42* mins. past *3* P.M.
RECORDS OF EUREKA COUNTY, NEVADA
M.N. REBALEATI, Recorder
File No. *205980* Fee \$ *454.00*

CLAIM MAP OF
PETE 1R - 6R, 10R - 14R and 18R - 36R
Lode Claims located within
Section 30,
T35N, R51E, M.D.M.
Sections 13, 14, and 23-26,
T35N, R50E, M.D.M.
Eureka County, Nevada
NEWMONT MINING CORPORATION