

EUREKA PLANNING COMMISSION APPROVAL

AT A REGULAR MEETING OF THE EUREKA COUNTY PLANNING COMMISSION, STATE OF NEVADA, HELD ON THE 27 DAY OF June, 2006, THIS MAP WAS APPROVED BY:

Christine Debalati
CHAIRPERSON

OWNERS CERTIFICATE

STATE OF NEVADA)
COUNTY OF EUREKA)

BEING FIRST DULY SWORN THE UNDERSIGNED, DAVID A. PASTORINO, AFFIRMS AND SAYS THAT HE IS THE SOLE OWNER OF THE LAND TO BE DIVIDED BY THIS MAP, AND HE CONSENTS TO THIS LAND DIVISION.

David A. Pastorino 6-27-06
DAVID A. PASTORINO DATE

SUBMITTED AND SWORN TO BEFORE ME, A NOTARY PUBLIC IN AND FOR SAID STATE AND COUNTY THIS 27 DAY OF June, 2006.

Mario Castaneda
NOTARY PUBLIC
MARIO CASTANEDA
NOTARY PUBLIC - NEVADA
CERTIFICATE #7-28073
APPT. EXP. JUNE 26, 2009

EUREKA COUNTY COMMISSIONERS APPROVAL

AT A REGULAR MEETING OF THE EUREKA COUNTY COMMISSIONERS HELD ON 27 JUNE 2006, THIS MAP, CONSISTING OF ONE SHEET WAS PRESENTED AS A PROPOSED PARCEL MAP IN SECTION 14, T.19 N., R.53 E., M.D.B. & M.

EUREKA COUNTY HEREBY ACCEPTS THE OFFER OF DEDICATION FOR PUBLIC PURPOSES OF THE STREET, ROAD AND PUBLIC UTILITY RIGHTS OF WAY ON THIS MAP. STREET AND ROAD RIGHTS OF WAY ARE NOT ACCEPTED BY THE COUNTY FOR THE PURPOSES OF THE PUBLIC WORKS AND EXPRESSLY APPROVED BY THE EUREKA COUNTY DEPARTMENT OF PUBLIC WORKS AND EXPRESSLY ACCEPTED BY RESOLUTION OF THE BOARD OF EUREKA COUNTY COMMISSIONERS.

CHAIRMAN, EUREKA COUNTY COMMISSIONERS DATE

EUREKA COUNTY CLERK DATE

ACCEPTANCE OF THIS PARCEL MAP BY EUREKA COUNTY DOES NOT CONSTITUTE A GUARANTEE THAT EACH OR ANY LOT SHOWN THEREON CONTAINS A LAWFUL BUILDING SITE.

FURTHER REPARCELING OF ANY PARCEL CREATED BY THIS MAP MAY BE SUBJECT TO THE PROVISIONS OF NRS 278.482.3 AND EUREKA COUNTY CODE, CHAPTER 16, WHICH PERTAIN TO THE REPARCELING OF LANDS FOR SUBDIVISIONS BUT NOT GREATER THAN IMPROVEMENTS THAT ARE REQUIRED FOR SUBDIVISIONS.

EUREKA COUNTY EXPRESSLY DECLARES THE USE OF ADJACENT OR ADJACENTLY SITUATED LANDS FOR AGRICULTURE, MINING, INDUSTRIAL OR COMMERCIAL PURPOSES, AND THE EXPANSION OR MODIFICATION OF SUCH USE, SHALL NOT CONSTITUTE A NUISANCE TO AFTER-ESTABLISHED OR SUBSEQUENT IN USES OF THE LANDS SHOWN ON THIS MAP, SUBJECT TO THE PROVISIONS OF CHAPTER 40.140 N.R.S., 202.450, AND EUREKA COUNTY CODE 16.28.070.

ALL REQUIREMENTS OF GOVERNMENTAL AGENCIES WITH PERMIT AUTHORITY MUST BE MET.

SURVEYOR'S CERTIFICATE

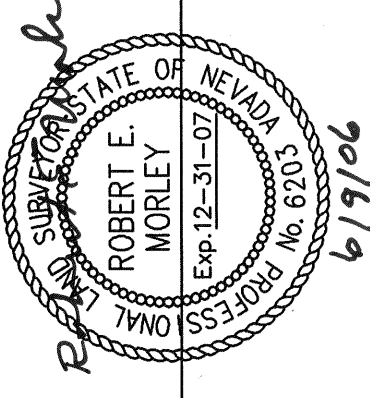
ROBERT E. MORLEY, A PROFESSIONAL LAND SURVEYOR LICENSED IN THE STATE OF NEVADA, CERTIFY THAT:

THIS PLAT REPRESENTS THE RESULTS OF A SURVEY CONDUCTED UNDER MY DIRECT SUPERVISION AT THE INSTANCE OF DAVID A. PASTORINO.

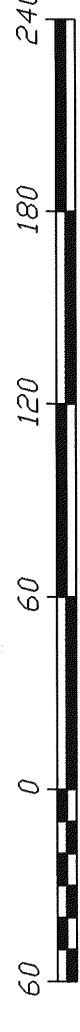
THE LANDS SURVEYED LIE WITHIN SECTION 14, T.19 N., R.53 E., M.D.B. & M., AND THE SURVEY WAS COMPLETED ON OCTOBER 5, 2005.

THIS PLAT COMPLES WITH THE APPLICABLE STATE STATUTES AND ANY LOCAL ORDINANCES IN EFFECT ON THE DATE THAT THE GOVERNING BODY GAVE ITS FINAL APPROVAL.

THE MONUMENTS DEPICTED ON THE PLAT ARE OF THE CHARACTER SHOWN, AND THE POSITIONS INDICATED AND ARE OF SUFFICIENT NUMBER AND DURABILITY.



ROBERT E. MORLEY, P.L.L.S. 6203



SCALE: 1"=60'

PARCEL MAP

FOR

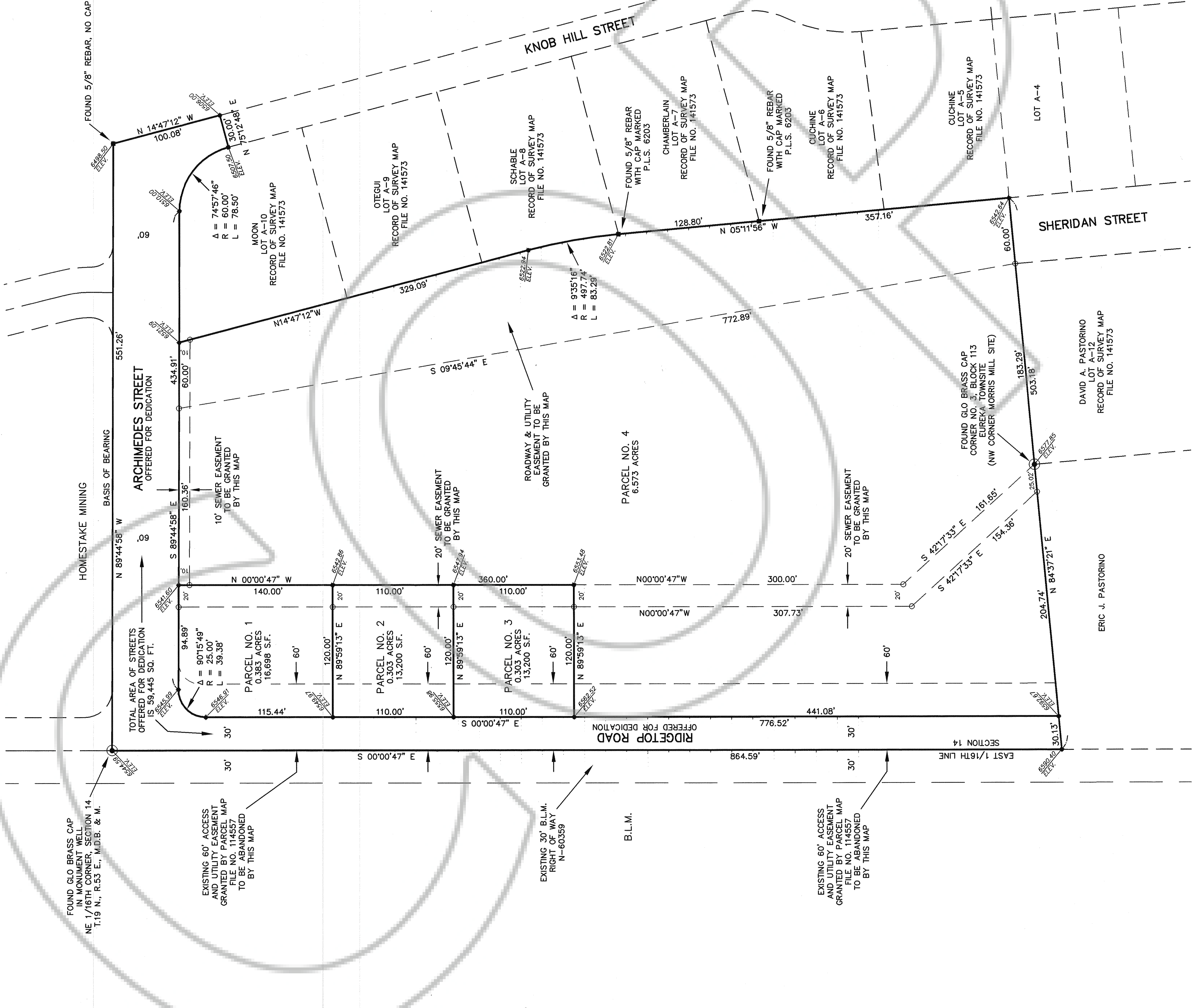
DAVID A. PASTORINO
A DIVISION OF PARCEL A-11 AS SHOWN ON A RECORD OF SURVEY FOR WILLIAM D. MILES & DAVID A. PASTORINO FILE NO. 141573

SECTION 14, T.19 N., R.53 E., M.D.B. & M.
EUREKA, EUREKA COUNTY, NEVADA

HIGH DESERT ENGINEERING

640 IDAHO STREET
EUREKA, NEVADA 89001
(775) 799-4053

206032



NOTES:

- 1) THE TOTAL SUBDIVIDED AREA OF THIS MAP EQUALS 8.928 ACRES.
- 2) THE PARCELS SHOWN ON THIS MAP DO NOT LIE IN A FLOOD PLAIN.
- 3) BASIS OF BEARINGS: THE LINE TAKEN BETWEEN THE FOUND BRASS CAP AND THE FOUND BRASS CAP CORNER OF PARCEL A-11 AS SHOWN ON THE RECORD OF SURVEY FOR WILLIAM D. MILES AND DAVID A. PASTORINO, FILED IN THE OFFICE OF THE EUREKA COUNTY RECORDER AS FILE NO. 141573, TAKEN AS N 88° 44' 58" W.
- 4) IN ADDITION TO ANY EASEMENTS SHOWN, THE PARCELS SHOWN ARE SUBJECT TO 10.00 FOOT DRAINAGE AND UTILITY EASEMENTS ALONG ALL EXTERIOR INTERIOR BOUNDARY LINES.

LEGEND

- = FOUND BRASS CAP
- = SET 5/8" REBAR WITH CAP MARKED PLS 6203.
- = FOUND 5/8" REBAR AS NOTED.
- = CALCULATED POINT, NOTHING FOUND, NOTHING SET.

COUNTY TREASURER'S CERTIFICATE

THIS IS TO CERTIFY THAT PARCEL NO. 001-012-12 HAS NO DELINQUENCIES AND THAT TAXES ARE PAID THROUGH June 30, 2006 DATE

Frances Hale
COUNTY TREASURER

RECORDER'S CERTIFICATE

FILE NO. 206144
FILED IN THE OFFICE OF HIGH DESERT ENGINEERING.

DATE 9-7- 2006

TIME 3:00 P.M.

My Debalati
EUREKA COUNTY RECORDER
Debbie Steinet
Deputy Recorder