

Found GLO brass cap for the  
NW Corner of Section 28  
T35N, R48E, MDM.

N 07°21'10" W  
5228.5 FT

Section  
29

Section  
28



Scale 1" = 500'

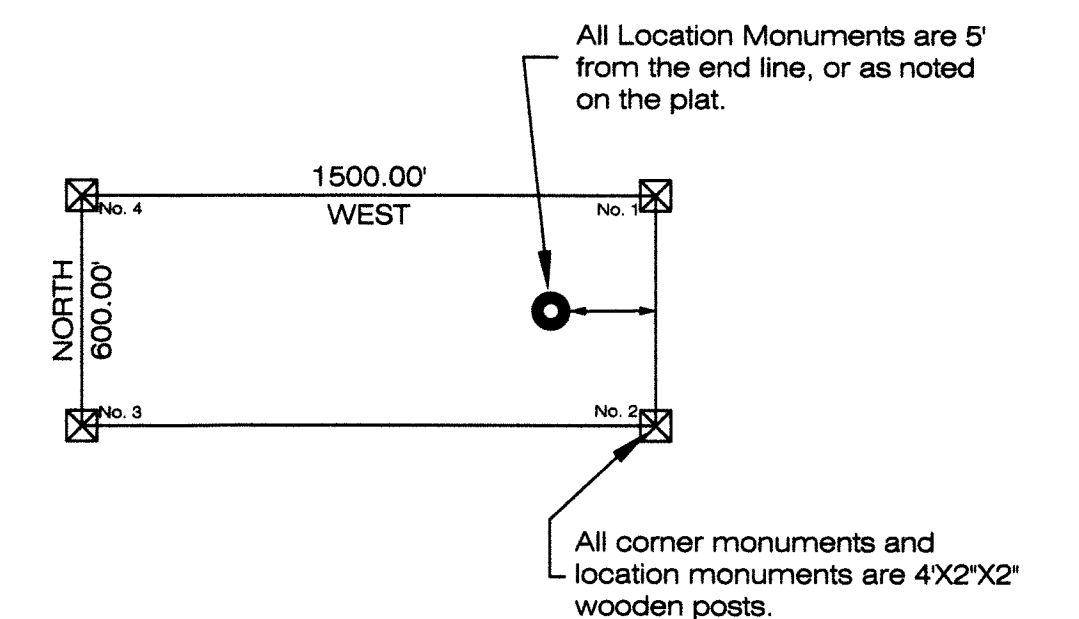
#### SURVEYOR'S CERTIFICATE

I, John D. Harmering, A Professional Land Surveyor (PLS 12062) Licensed in The State Of Nevada, certify that:

- 1) This plat represents the results of a survey conducted under my direct supervision at the instance of NewWest Gold LLC, A Delaware Limited Liability Company (owner).
- 2) The mining claims surveyed lie within T34N, R48 E, MDM, Sections 4 & 5 and T35N, R48E, MDM, Sections 28, 29, 32 & 33; and the survey was completed on August 15, 2006.
- 3) This plat complies with applicable statutes of this state and any local ordinances in effect on the date that the survey was completed, and the survey was conducted in accordance with Chapter 625 of the Nevada Administrative Code.
- 4) The monuments depicted on the plat are of the character shown, occupy the positions indicated and are of sufficient number and durability.
- 5) The Section lines protracted on this map are from the BLM GCDB.
- 6) These Claims are relocations of previously located claims with the same names.

*John D. Harmering*  
EXP 6-30-07  
8/20/06

Typical Claim  
unless otherwise noted

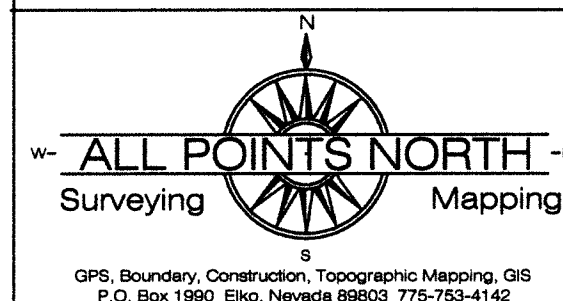


FILED AT THE REQUEST OF *NewWest Gold*  
on *9-27-2006*, at *3:22 pm*, page *1* of *1*  
RECORDS OF EUREKA COUNTY, NEVADA  
M.N. REBALEATI, Recorder  
File No. *206279* Fee \$ *409.00*

T 35 N  
T 34 N

Section 5

Section 4



All Points North  
P.O. Box 1990  
Elko, Nevada 89803

Claims in T34N, R48 E, MDM, Sections 4 & 5,  
and T35N, R48E, MDM, Sections 28, 29, 32, & 33  
Eureka County, Nevada

Map Of:

Lode Claims Roger 2,4,6,8,10,12,14,16,18 &  
Lode Claims Roger 25 - 42

Located For:

NewWest Gold LLC,  
A Delaware Limited Liability Company  
250 South Rock Blvd., Suite 118  
Reno, Nevada 89502