

DRAWING NUMBER  
719 N R 53 E Dec 14  
Blanchard  
Boundary Line Adj

DRAWING NUMBER  
206337

DRAWING NUMBER

DRAWING NUMBER

SAFECO PRODUCTS • NEW HAVEN, CONNECTICUT  
REGISTERED BY PART NUMBER 8891

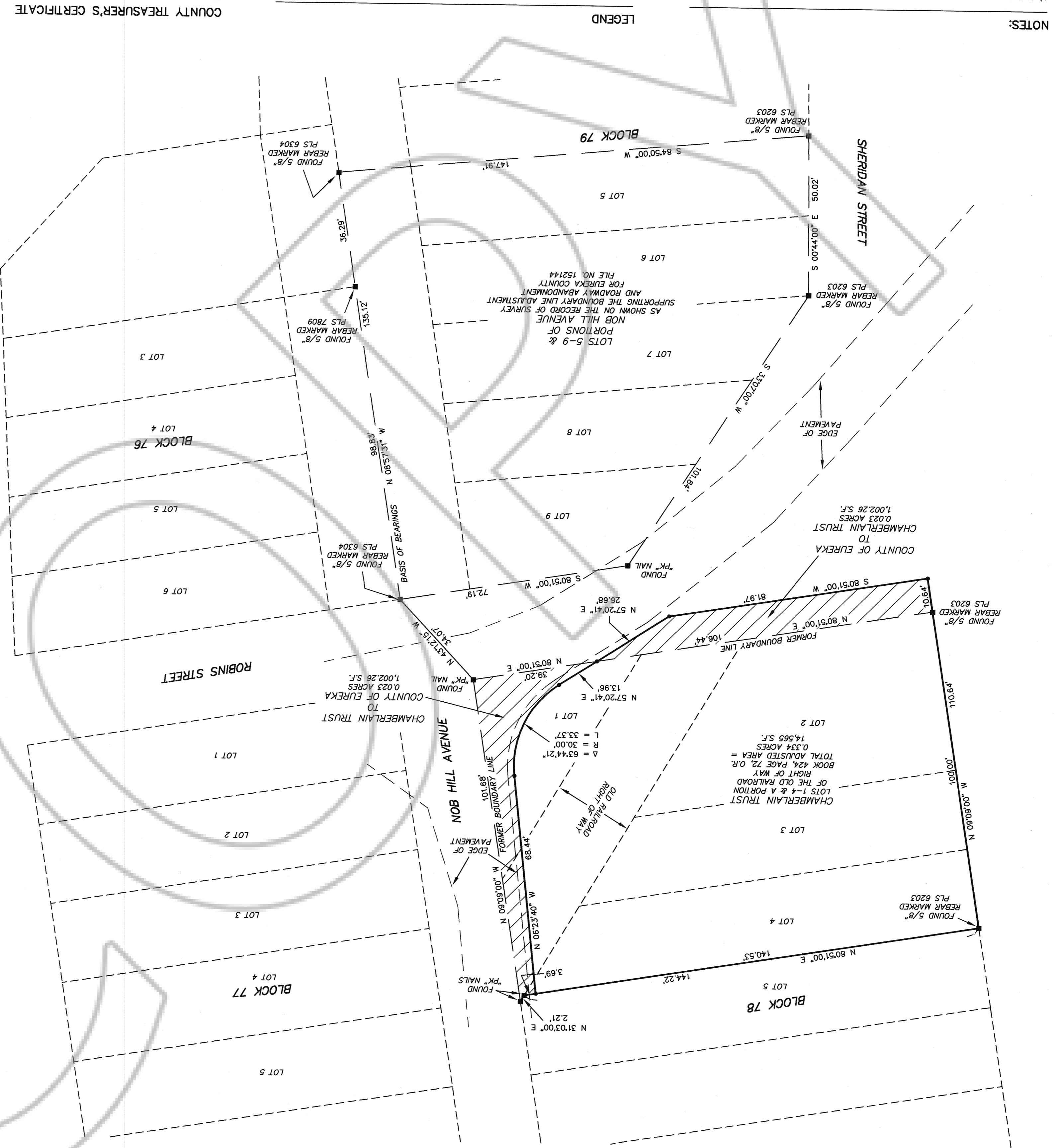
SAFECO PRODUCTS • NEW HAVEN, CONNECTICUT  
REGISTERED BY PART NUMBER 8891

SAFECO PRODUCTS • NEW HAVEN, CONNECTICUT  
REGISTERED BY PART NUMBER 8891

SAFECO PRODUCTS • NEW HAVEN, CONNECTICUT  
REGISTERED BY PART NUMBER 8891

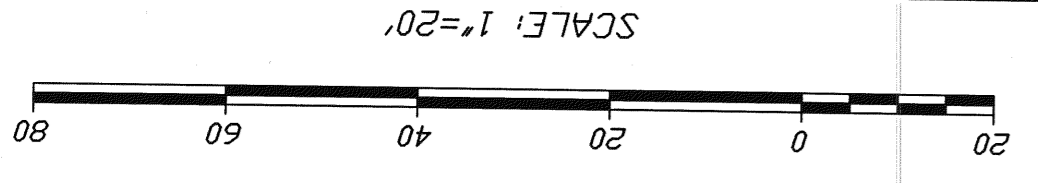
NOTES:  
1) BASIS OF BEARINGS: THE LINE BETWEEN THE FOUND NORTHEAST PROPERTY CORNER AND SOUTHEAST PROPERTY CORNER OF THE NEW AREA LOTS 5-9, AS SHOWN ON THE RECORD OF SURVEY SUPPORTING A BOUNDARY LINE ADJUSTMENT AND ROADWAY ABANDONMENT FOR EUREKA COUNTY, ON FILE IN THE OFFICE OF THE EUREKA COUNTY RECORDER, EUREKA, NEVADA, FILE NO. 152144, TAKEN AS N 08° 57' 31" W.

- LEGEND
- = FOUND PROPERTY CORNER AS NOTED.
  - = SET 5/8" REBAR WITH PLASTIC CAP MARKED PLS 6203.



EUREKA COUNTY RECORDER  
TIME 9:04 A.M.  
DATE October 9, 2006  
FILE NO. 206337  
PAID THROUGH October 2, 2006  
Frances Gale  
EUREKA COUNTY TREASURER

PAID THROUGH October 2, 2006  
Frances Gale  
EUREKA COUNTY TREASURER  
I, FRANCES GALE, CERTIFY THAT ALL PROPERTY TAXES ON PARCEL NO. 001-031-07 HAVE BEEN PAID FOR THIS FISCAL YEAR.



BOUNDARY LINE ADJUSTMENT  
FOR  
RECORD OF SURVEY  
COUNTY OF EUREKA, NEVADA AND  
THE CHAMBERLAIN TRUST  
IN  
SECTION 14, T.19 N., R.53 E., M.D.B. & M.  
EUREKA TOWNSITE, EUREKA COUNTY, NEVADA  
HIGH DESERT ENGINEERING  
640 IDAHO STREET  
ELKO, NEVADA 89801  
(775) 738-4053  
206068

ROBERT E. MORLEY, P.L.S., NO. 6203  
9/19/06

LAND SURVEYOR'S CERTIFICATE  
1. ROBERT E. MORLEY, A PROFESSIONAL LAND SURVEYOR LICENSED IN THE STATE OF NEVADA DO HEREBY CERTIFY THAT:  
(1) THIS IS A TRUE AND ACCURATE MAP OF THE LAND SURVEYED UNDER MY SUPERVISION AND DIRECTION ON THE 16th DAY OF JUNE, 2006, AT THE INSTANCE OF THE COUNTY OF EUREKA, NEVADA AND ALAN KERBY CHAMBERLAIN AND YVONNE CHAMBERLAIN, AS CO-TRUSTEES OF THE CHAMBERLAIN TRUST.  
(2) ALL CORNERS AND ANGLE POINTS OF THE ADJUSTED BOUNDARY LINE SHOWN HAVE BEEN SET AND THAT THE MONUMENTS ARE OF THE CHARACTER AND OCCUPY THE BEST SET AND THAT THE MONUMENTS HEREON AND ARE SUFFICIENT TO ENABLE THIS SURVEY TO BE RETRACED.  
(3) THIS MAP IS NOT IN CONFLICT WITH THE PROVISIONS OF NRS 278.010 TO 278.630 INCLUSIVE, AND IS FILED PURSUANT TO NRS 278.5693 AND NRS 629.340.

NOTARY PUBLIC AND FOR MY COMMISSION EXPIRES: January 3, 2007  
KIMBERLY L. TODD  
Notary Public - State of Nevada  
My Commission Expires January 3, 2007

NOTARY PUBLIC AND FOR MY COMMISSION EXPIRES: January 3, 2007  
KIMBERLY L. TODD  
Notary Public - State of Nevada  
My Commission Expires January 3, 2007

NOTARY PUBLIC AND FOR MY COMMISSION EXPIRES: January 3, 2007  
KIMBERLY L. TODD  
Notary Public - State of Nevada  
My Commission Expires January 3, 2007

NOTARY PUBLIC AND FOR MY COMMISSION EXPIRES: January 3, 2007  
KIMBERLY L. TODD  
Notary Public - State of Nevada  
My Commission Expires January 3, 2007

NOTARY PUBLIC AND FOR MY COMMISSION EXPIRES: January 3, 2007  
KIMBERLY L. TODD  
Notary Public - State of Nevada  
My Commission Expires January 3, 2007

BY: ALAN KERBY CHAMBERLAIN, CO-TRUSTEE  
10/6/06  
DATE

BY: CHAIMAN EUREKA COUNTY COMMISSION  
10/6/06  
DATE

IN WITNESS WE, THE OWNERS, SET OUR HANDS ON THE DATE SHOWN.  
COUNTY OF EUREKA, NEVADA

1) THEY HAVE EXAMINED THIS PLAT AND APPROVE AND AUTHORIZE THE RECORDED THEREOF.  
2) THEY AGREE TO EXECUTE THE REQUIRED DOCUMENTS CREATING ANY EASEMENT THAT IS SHOWN.  
3) THEY AGREE TO EXECUTE THE REQUIRED DOCUMENTS ABANDONING ANY EXISTING EASEMENT, IF NECESSARY, PURSUANT TO THE PROVISIONS OF NRS 278.010 TO 278.630 INCLUSIVE.  
4) ALL PROPERTY TAXES ON THE LAND FOR THIS FISCAL YEAR HAVE BEEN PAID.  
5) ANY LENDER WITH AN AMOUNT ACCOUNT FOR THE PAYMENT OF TAXES HAS BEEN NOTIFIED OF THE ADJUSTMENT OF THE BOUNDARY LINE ON THE TRANSFER OF THE LAND.

OWNERS CERTIFICATE  
KNOWN OF ALL MEN BY THESE PRESENTS THAT THE COUNTY OF EUREKA, NEVADA AND ALAN KERBY CHAMBERLAIN AND YVONNE CHAMBERLAIN, AS CO-TRUSTEES OF THE CHAMBERLAIN TRUST, BEING THE OWNERS OF THOSE PARCELS REFERRED BY THE ADJUSTMENT OF THE BOUNDARY LINES AS SHOWN ON THIS PLAT, DO HEREBY CERTIFY THAT: