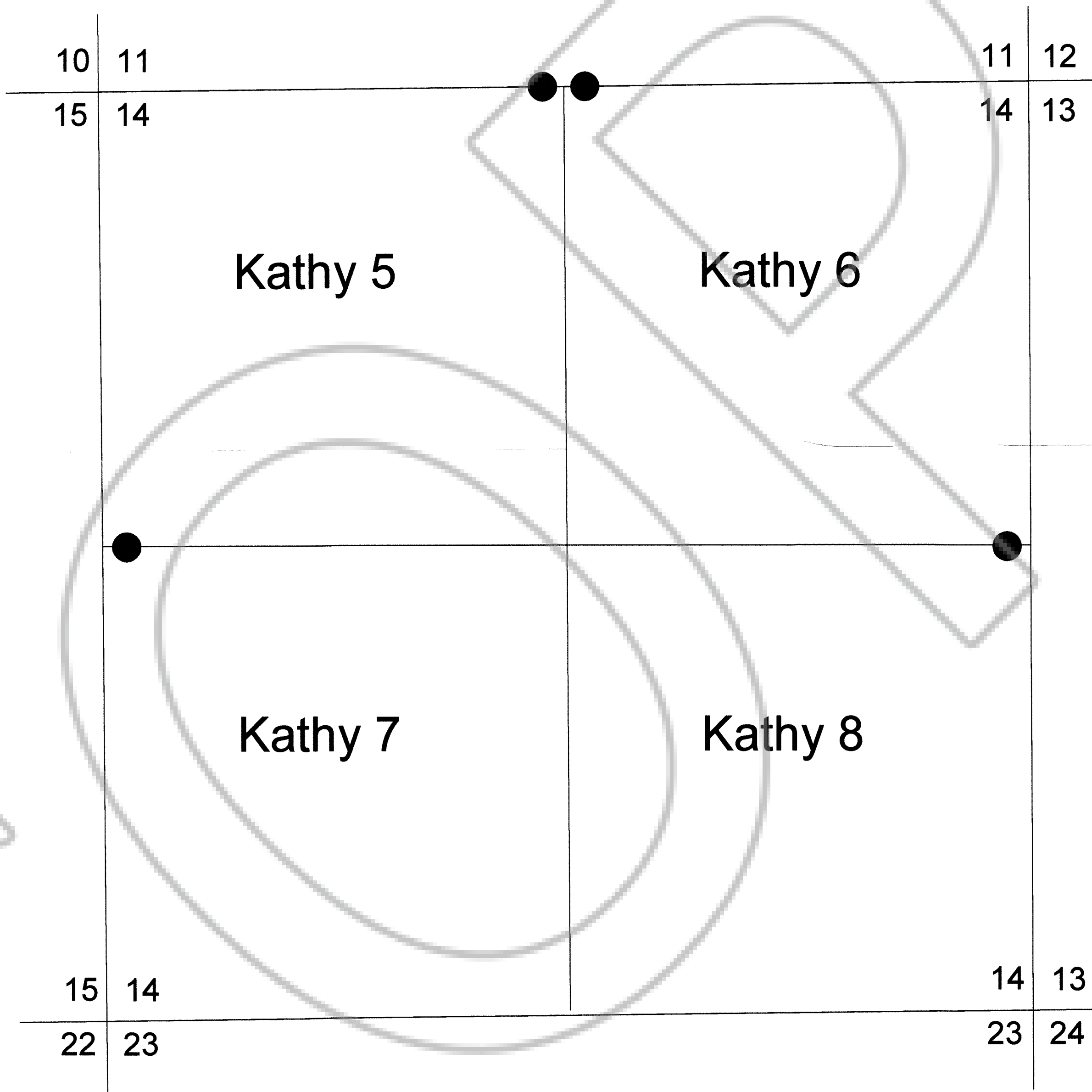
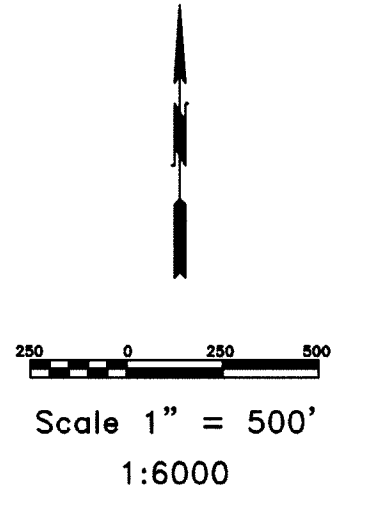
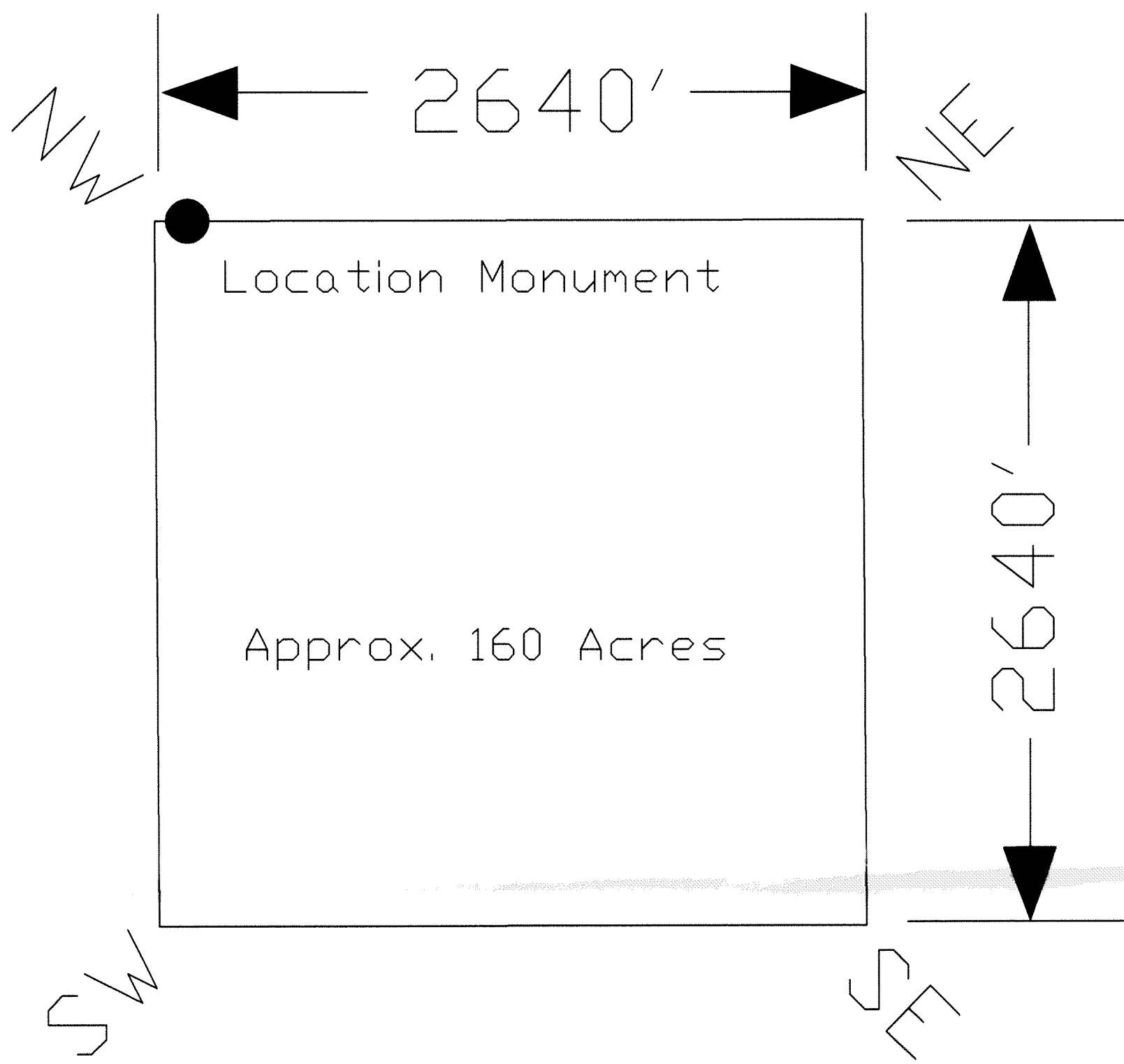


# TYPICAL CLAIM



Kathy claims are tied to the surveyed sections corners and quarter corners, Section 14, T.30N., R.48E., M.D.B.M.

FILED AT THE REQUEST OF: *Max Mathews*  
 10/24/2006 at 2:25 PM  
 RECORDS OF EUREKA COUNTY, NEVADA  
 REBALEATI, Recorder  
 206700 Fee \$44.00

LOCATION DATES:  
 September 5, 2006 - Kathy 5 - 8

NOTES:  
 LOCATION MONUMENTS SET AT CORNER DENOTED ON MAP  
 (NORTHERLY BOUNDARY) OF THE CLAIM. ALL LOCATION MONUMENTS  
 AND CLAIM POSTS ARE 1 1/2" x 1 1/2" x 4' WOODEN STAKES.

	Locator: c/o Max Mathews 1351 Poplar Avenue, Twin Falls, Idaho 83301 Kathy 5-8 Placer Claims T.30N., R.48E.; Eureka County, Nevada	
	DATE: October 2006	ACAD FILE NAME claim location Kathy 4.dwg PLOT SCALE 1" = 500'
369 - 5th STREET PH: (775) 778-0668 ELKO, NV 89801 FAX: (775) 778-0667		