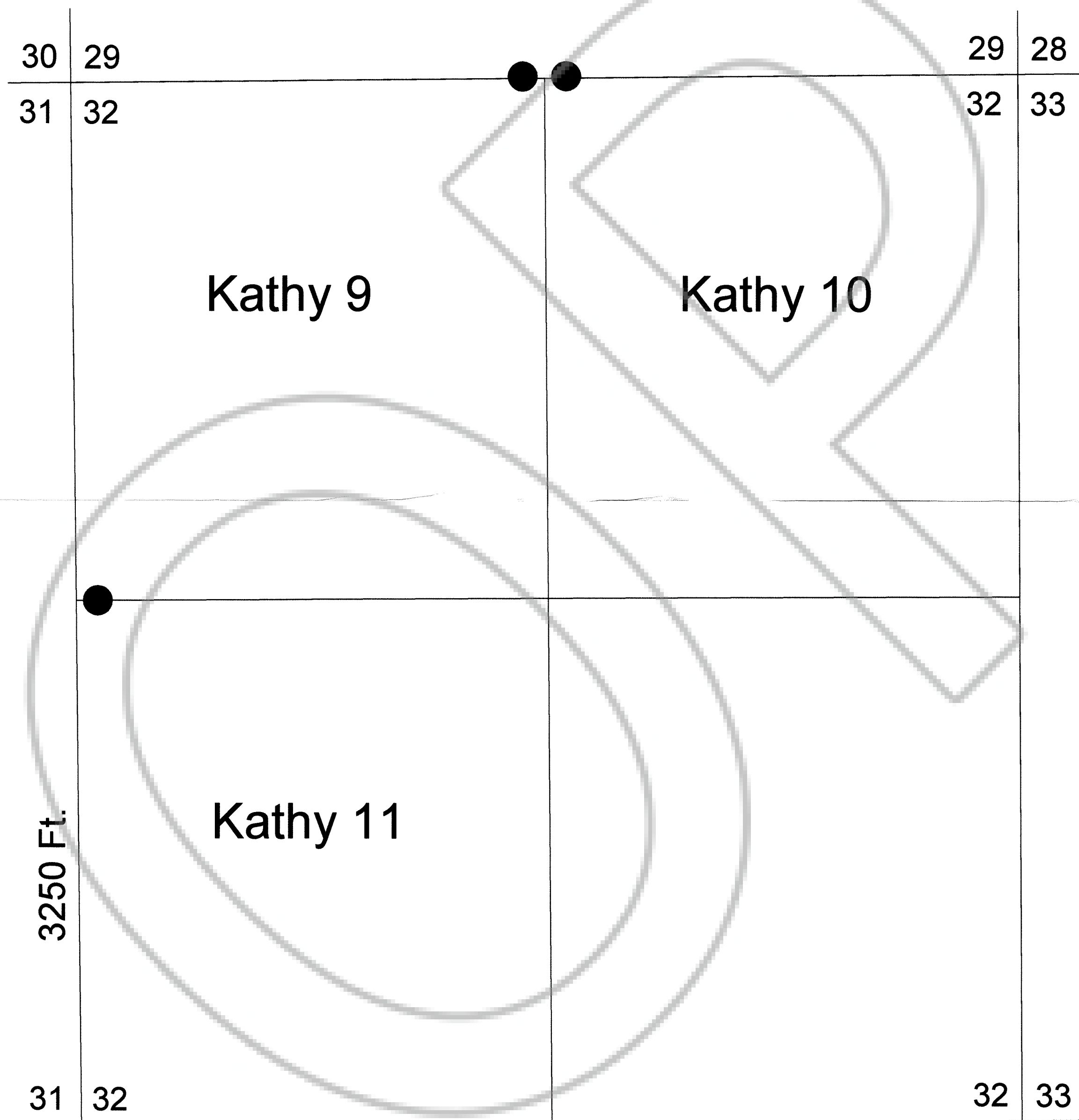
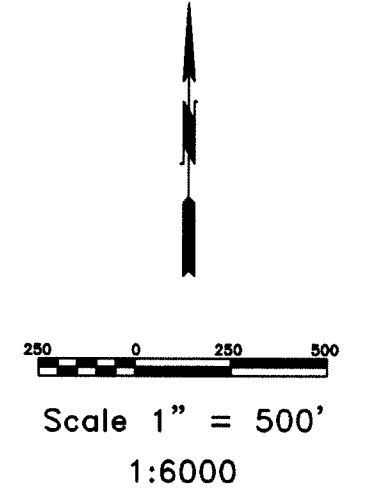
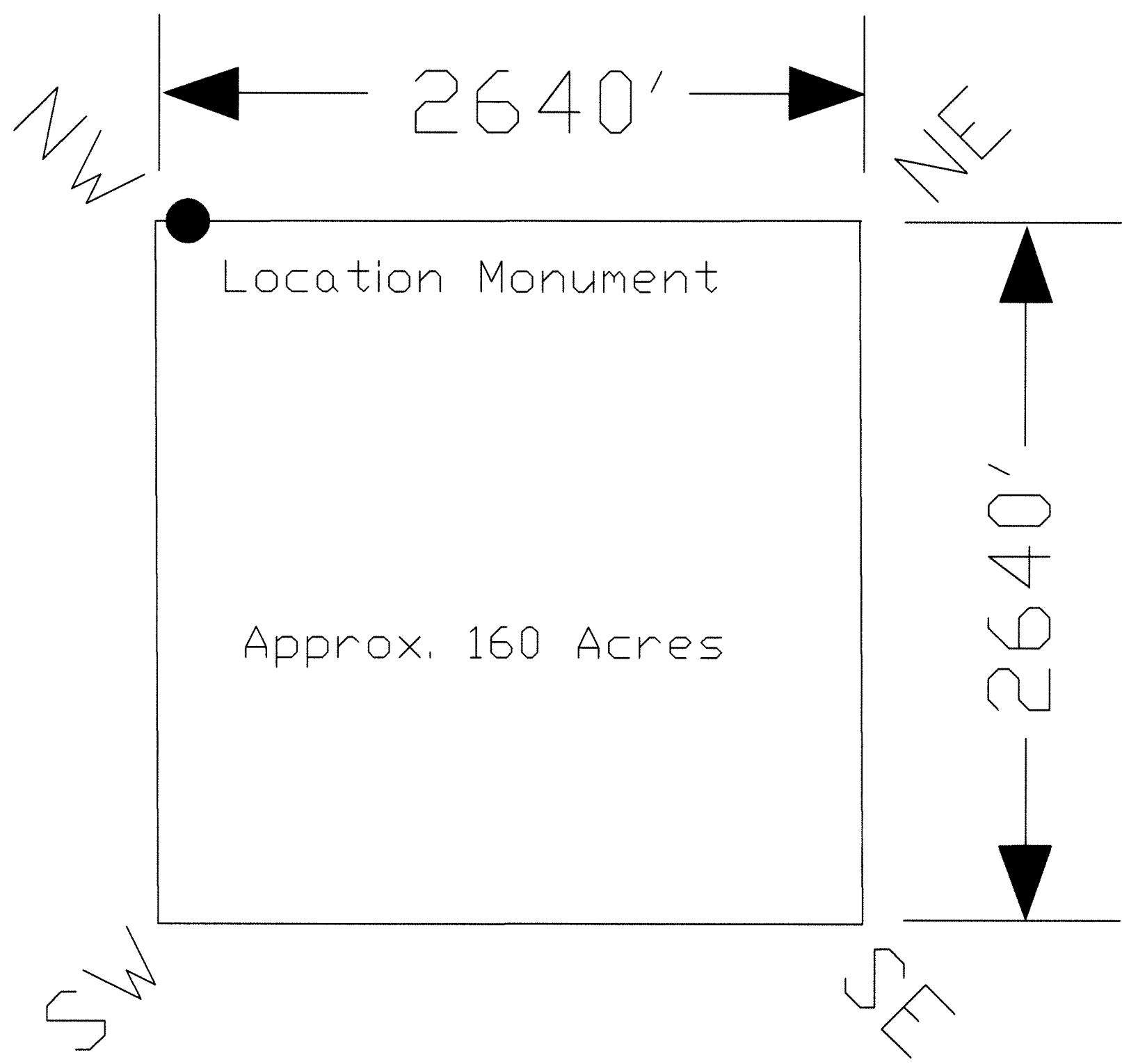


# TYPICAL CLAIM



Kathy claims are tied to the surveyed sections corners and quarter corners, Section 32, T.30N., R.48E., M.D.B.M.

LOCATION DATES:  
September 5, 2006 - Kathy 9 - 11

FILED AT THE REQUEST OF *Max Mathews*  
*10/24/06*, at *3:55* P.M. past *10 A.M.*  
CORDS OF EUREKA COUNTY, NEVADA  
BY: REBALEATI, Recorder  
No. **206705** Fee \$ *530.00*

NOTES:  
LOCATION MONUMENTS SET AT CORNER DENOTED ON MAP (NORTHERLY BOUNDARY) OF THE CLAIM. ALL LOCATION MONUMENTS AND CLAIM POSTS ARE 1 1/2" x 1 1/2" x 4' WOODEN STAKES.

	Locator: c/o Max Mathews 1351 Poplar Avenue, Twin Falls, Idaho 83301 Kathy 9-11 Placer Claims T.30N., R48E; Eureka County, Nevada	
	DATE: October 2006	ACAD FILE NAME: elenah.ogorjan\kathy1.dwg PLOT SCALE: 1" = 500'
369 - 5th STREET PH: (775) 778-0668 ELKO, NV 89801 FAX: (775) 778-0687		