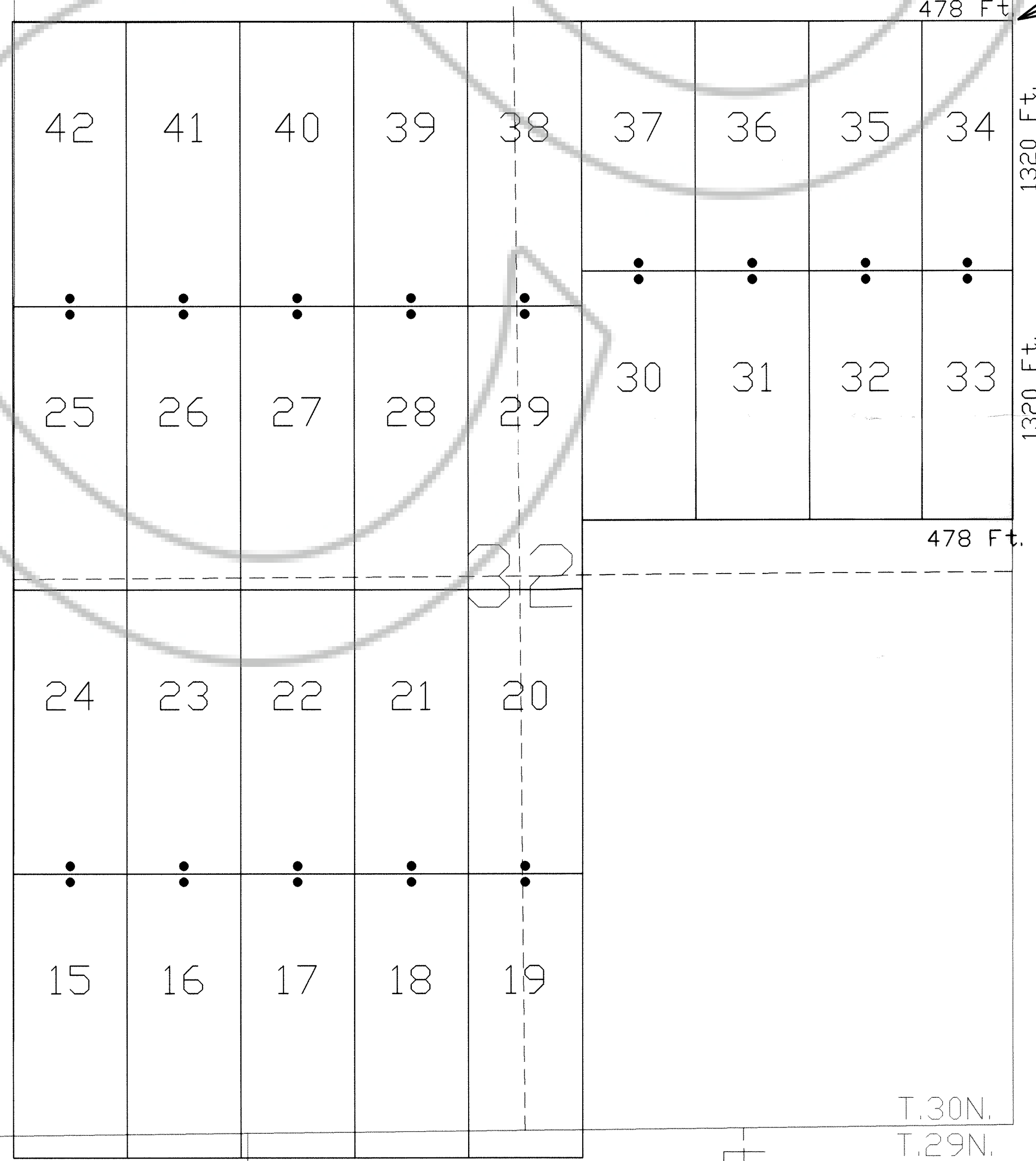
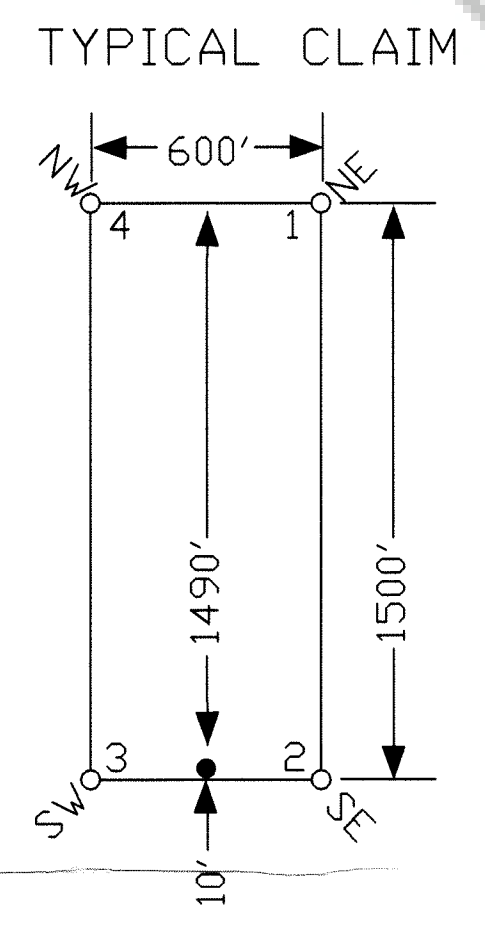
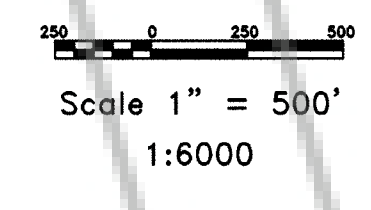


TIE POINT DATA:  
THE NORTHEAST CORNER OF CATHY 159 LIES  
ON THE NORTHEAST CORNER OF SECTION 20,  
T.30N., R.48E., M.D.B.M.



TIE POINT DATA:  
THE NORTHEAST CORNER OF CATHY 34 LIES  
ON THE NORTHEAST CORNER OF SECTION 32,  
T.30N., R.48E., M.D.B.M.

NOTES:  
LOCATION MONUMENTS SET 10' FROM CLAIM END  
CENTERLINES. ALL LOCATION MONUMENTS AND CLAIM  
POSTS ARE 2"x2"x4' WOODEN STAKES.

FILED AT THE REQUEST OF Crescent Gold JV  
11/20/06 mins. past 2:00 PM  
JORDAN J. JOHNSON, C.  
IN REBUTTAL, Recorder  
File No. 2006045 Fee \$ 11.00

LOCATION DATES:  
September 5, 2006 - Cathy 15-42 ✓  
September 17, 2006 - Cathy 151-186



Locator:  
**Crescent Gold Joint Venture**  
1351 Poplar Avenue, Twin Falls, Idaho 83301  
Cathy 15-42 & 151-186 Lode Claims  
T.29,30N., R.48E; Eureka County, Nevada

369 - 5th STREET  
PH: (775) 778-0668 ELKO, NV 89801 FAX: (775) 778-0687

DATE: October 2006  
ACAD FILE NAME: clmty2930n.r48e.ctb  
PLOT SCALE: 1" = 500'  
DRAWN BY: srms