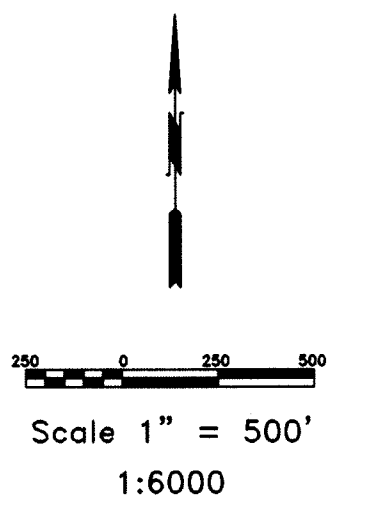
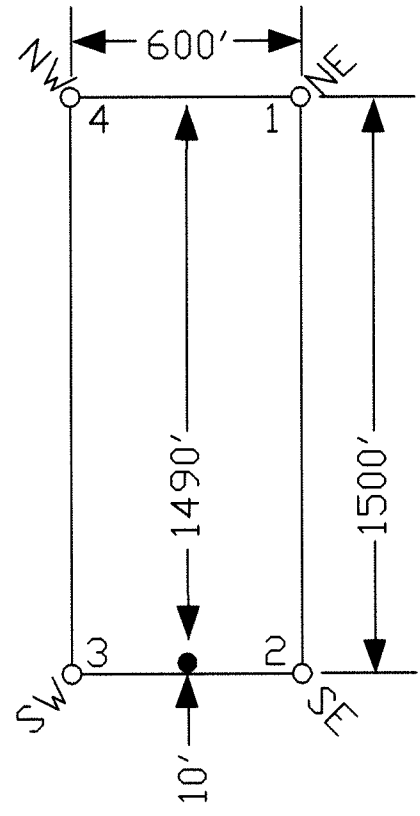
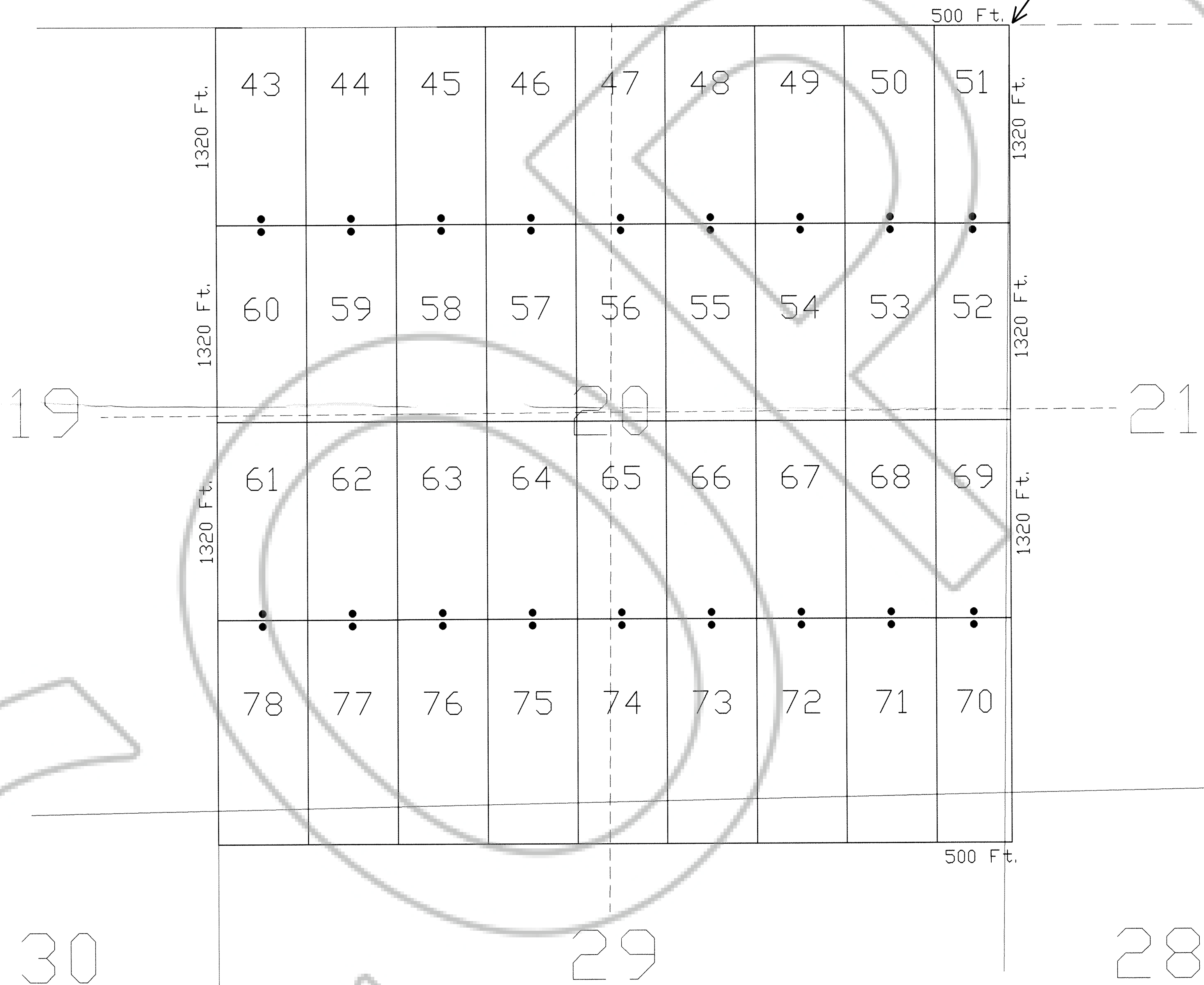


TYPICAL CLAIM



TIE POINT DATA:  
THE NORTHEAST CORNER OF CATHY 51 LIES  
ON THE NORTHEAST CORNER OF SECTION 20,  
T.29N., R.48E., M.D.B.M.



FILED AT THE REQUEST OF Crescent Gold JV  
on 11/20/06 at 30 mins past 2 P.M  
RECORDS OF EUREKA CO., NEVADA  
(M.N. REBALEATI) Register  
File No. 206882 Fee \$ 544.00

LOCATION DATES:  
September 7, 2006 - Cathy 43-78

NOTES:  
LOCATION MONUMENTS SET 10' FROM CLAIM END  
CENTERLINES. ALL LOCATION MONUMENTS AND CLAIM  
POSTS ARE 2"x2"x4' WOODEN STAKES.

DASHED SECTION LINES INDICATE PROJECTED SECTIONS.

	Locator: <b>Crescent Gold Joint Venture</b> 1351 Poplar Avenue, Twin Falls, Idaho 83301 Cathy 43-78 Lode Claims T.29N.,R48E; Eureka County, Nevada	
	DATE: October 2006	ACAD FILE NAME: cathy20a.dwg PLOT SCALE: 1" = 500'
369 - 5th STREET PH: (775) 778-0668 ELKO, NV 89801 FAX: (775) 778-0687		