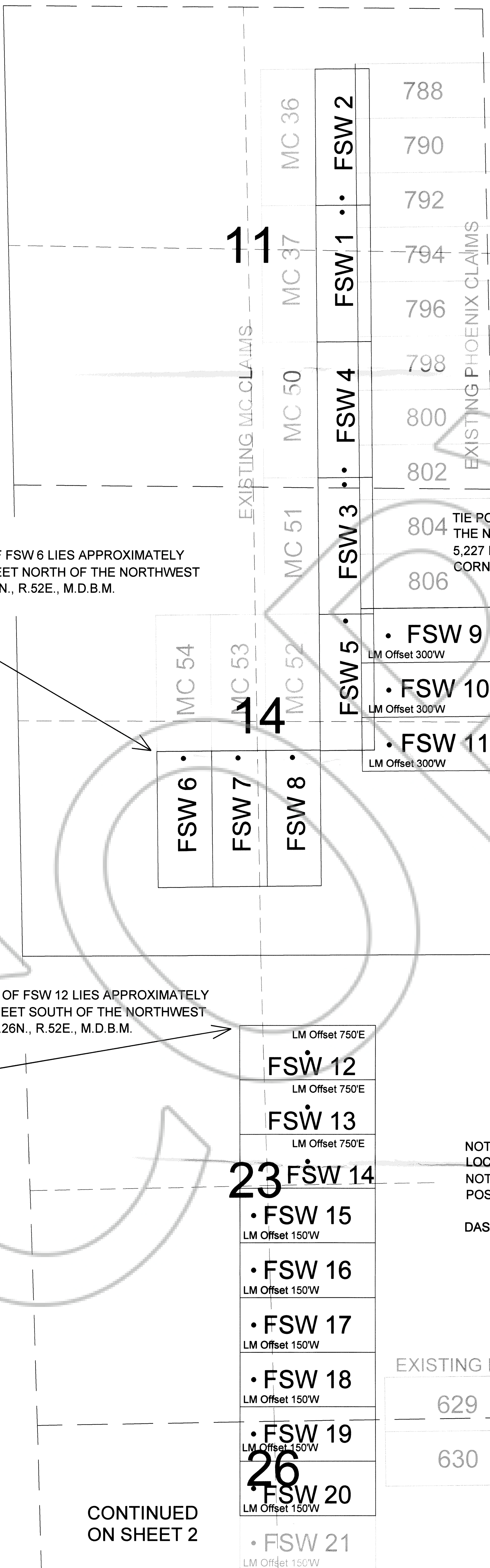
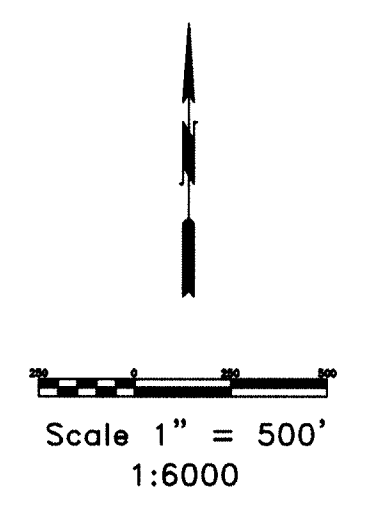
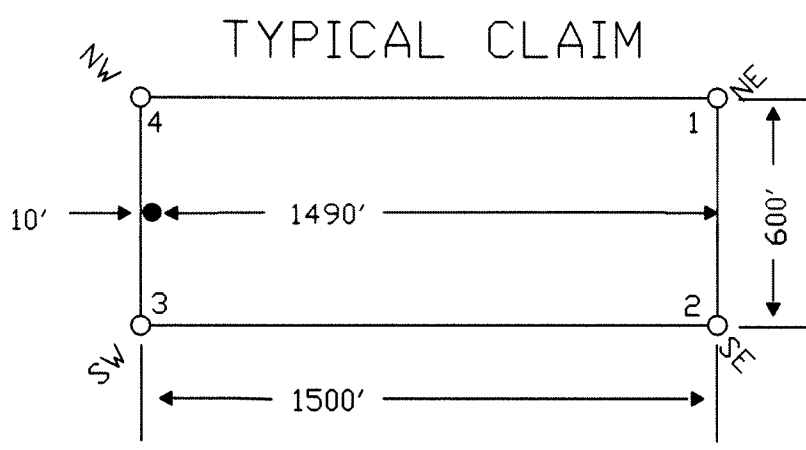
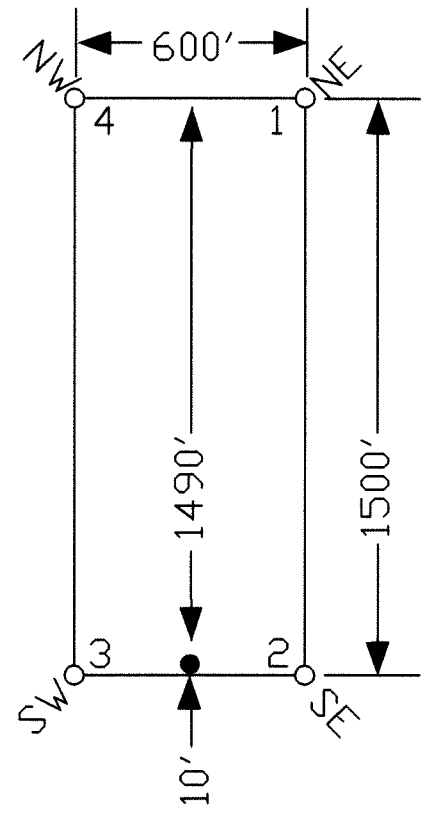


TYPICAL CLAIM



TIE POINT DATA:  
THE NORTHWEST CORNER OF FSW 6 LIES APPROXIMATELY 1,480 FEET EAST AND 2,255 FEET NORTH OF THE NORTHWEST CORNER OF SECTION 23, T.26N., R.52E., M.D.B.M.

TIE POINT DATA:  
THE NORTHEAST CORNER OF FSW 9 LIES APPROXIMATELY 5,227 FEET EAST AND 3,842 FEET NORTH OF THE NORTHWEST CORNER OF SECTION 23, T.26N., R.52E., M.D.B.M.

TIE POINT DATA:  
THE NORTHWEST CORNER OF FSW 12 LIES APPROXIMATELY 2,390 FEET EAST AND 764 FEET SOUTH OF THE NORTHWEST CORNER OF SECTION 23, T.26N., R.52E., M.D.B.M.

NOTES:  
LOCATION MONUMENTS SET 10' FROM CLAIM END UNLESS NOTED ON MAP. ALL LOCATION MONUMENTS AND CLAIM POSTS ARE 2"x2"x4' WOODEN STAKES.

DASHED SECTION LINES INDICATE PROJECTED SECTIONS.

CONTINUED ON SHEET 2

DOC # 0207102  
11/29/2006 04:37 PM  
Official Record  
Recording Requested By:  
GOLDEN GRYPHON USA, INC.  
Eureka County - NV  
Mike Rebaletti - Recorder  
File # 529-06 Page 2 of 2  
RT11 Recorded By: FES  
Book-- Page-- 0000

LOCATION DATES:  
September 1, 2006 - FSW 1-55

Golden Gryphon USA Inc.  
1400 Tanager place RR21, Roberts Creek, BC V0N 2W1  
FSW 1-55 Lode Claims  
T.26N.,R52E; Eureka County, Nevada

369 - 5th STREET  
PH: (775) 778-0668 ELKO, NV 89801 FAX: (775) 778-0687

DATE: November 2006  
ACAD FILE NAME: (path omitted) 0207102.dwg  
PLOT SCALE: 1"=500'

DRAWN BY: [blank]  
SHEET 1 OF 2

CONTINUED  
ON SHEET 1

TIE POINT DATA:  
THE NORTHWEST CORNER OF FSW 22 LIES APPROXIMATELY  
2,390 FEET EAST AND 6,764 FEET SOUTH OF THE NORTHWEST  
CORNER OF SECTION 23, T.26N., R.52E., M.D.B.M.

• FSW 20  
LM Offset 150'W

• FSW 21  
LM Offset 150'W

• FSW 22  
LM Offset 150'W

• FSW 23  
LM Offset 150'W

• FSW 24  
LM Offset 150'W

• FSW 25  
LM Offset 150'W

• FSW 26  
LM Offset 150'W

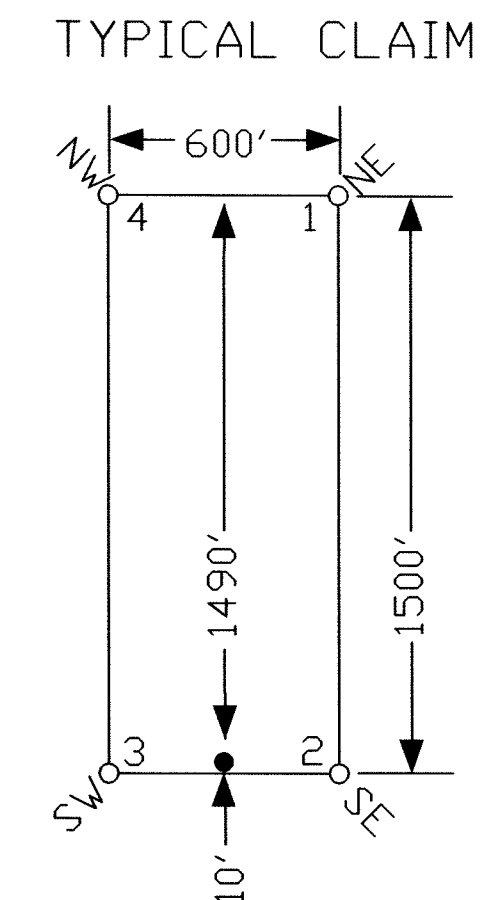
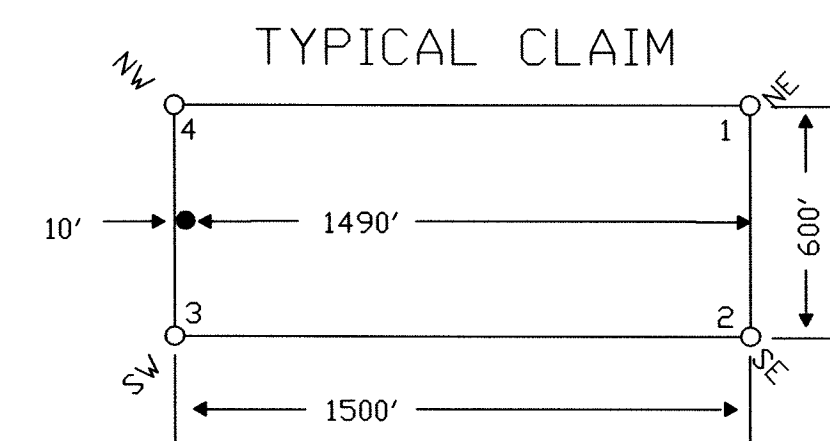
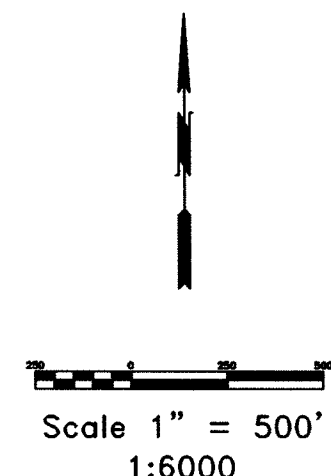
• FSW 27  
LM Offset 150'W

• FSW 28  
LM Offset 150'W

• FSW 29  
LM Offset 150'W

• FSW 30  
LM Offset 150'W

• FSW 31  
LM Offset 150'W



893	892	911	• FSW 38	FSW 47	• FSW 46
895	894	912	• FSW 39	FSW 49	• FSW 48
FSW 33	• FSW 32	FSW 41	• FSW 40	FSW 51	• FSW 50
FSW 35	• FSW 34	FSW 43	• FSW 42	FSW 53	• FSW 52
FSW 37	• FSW 36	FSW 45	• FSW 44	FSW 55	• FSW 54

34

35

EXISTING PHOENIX CLAIMS

DOC # 0207102  
Official Record  
Eureka County - NV  
Mike Rebaletti - Recorder  
Fee: \$829.00  
Book- Page- 0000

LOCATION DATES:  
September 1, 2006 - FSW 1-55

NOTES:  
LOCATION MONUMENTS SET 10' FROM CLAIM END UNLESS  
NOTED ON MAP. ALL LOCATION MONUMENTS AND CLAIM  
POSTS ARE 2"x2"x4' WOODEN STAKES.

DASHED SECTION LINES INDICATE PROJECTED SECTIONS.

Golden Gryphon USA Inc.  
1400 Tanager place RR21, Roberts Creek, BC V0N 2W1  
FSW 1-55 Lode Claims  
T.26N.,R52E; Eureka County, Nevada

369 - 5th STREET  
ELKO, NV 89801  
PH: (775) 778-0668 FAX: (775) 778-6887

DATE: November 2006  
DRAWN BY: [Signature]

SHEET 2 OF 2