

18

17

19

20

The NW Corner of CSAMT 67B bears N49°12' 44" E and is 5687' from the SW corner of Section 19 T22N R50E

T22N R50E

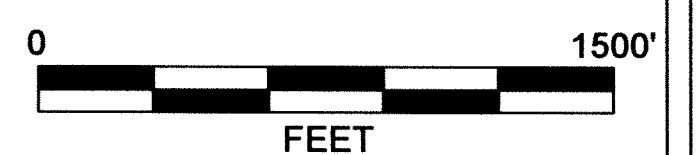
30

29

"CSAMT" lode claims 67B, 69B, 71B, 73B, and 75B were located on November 8, 2006
Sections 19 and 20
Township 22 North
Range 50 East
Eureka County, Nevada

Claim Location Map for CSAMT 67B, 69B, 71B, 73B, and 75B

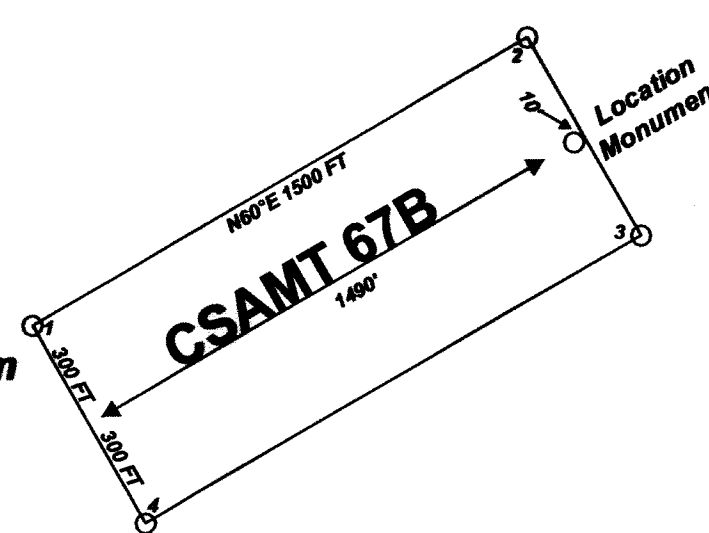
Scale 1:6000
1" = 500'



Notes:
Location Monuments are set 10' from claim end lines unless noted otherwise. All location and corner monuments are 2" X 2" X 4' wooden posts with scribed metal tags. All claims are 600' by 1500' unless noted otherwise.

Locator:
Teck Cominco American Incorporated
501 North Riverpoint Boulevard - Suite 300
Spokane, Wa 99202

Typical Claim



DOC # 0207340

Official Record
Eureka County - NV
Mike Rebaletti - Recorder
Fee \$75.00
Book- Page- 0000



0207340

N

MINING CLAIM LOCATION MAP
CSAMT 67B, 69B, 71B, 73B, and 75B
Lode Mining Claims
Teck Cominco American Incorporated
501 North Riverpoint Boulevard - Suite 300
Spokane, Wa 99202

Datum: 1927 Projection: UTM Zone 11
Units: Feet