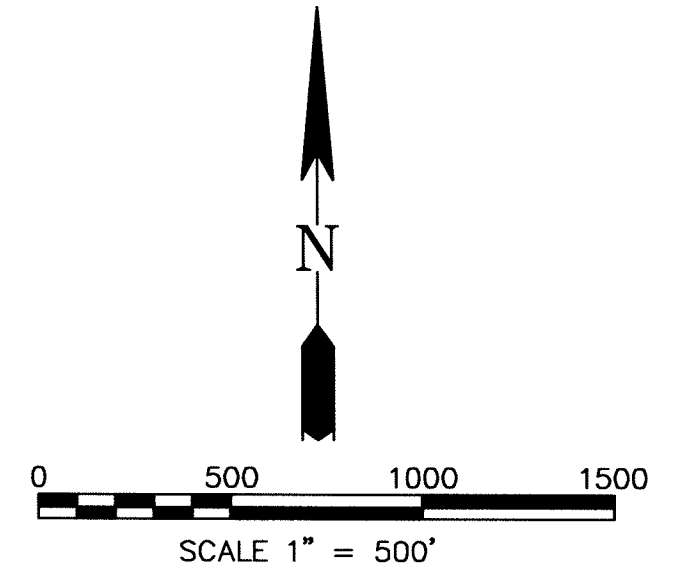


NOTES: Section lines are approximate.  
 1/4 Section lines are approximate.  
 Source, Nevada BLM GCDB  
 Basis of Bearings NAD27 NV SP East Zone

- LEGEND
- Location Monument  
1.5"x 1.5"x 4' long wood post
  - Claim Corner  
1.5"x 1.5"x 4' long wood post
  - ◆ Found SECTION CORNER  
GLO Brass Cap 1922 on iron pipe
  - ◆ Found 1/4 SECTION CORNER  
GLO Brass Cap 1922 on iron pipe (bent)  
1/4 Cor.

LOCATION DATES  
 RH 81: October 27, 2006  
 RX 1, 2, 3, 4: December 7, 2006  
 RX 5: November 20, 2006  
 RX 6 through 81: November 30, 2006  
 RX 82 through 117: December 1, 2006

LOCATOR: BARRICK GOLD EXPLORATION INC.  
 ADDRESS: 293 SPRUCE ROAD  
 ELKO, NEVADA 89801



DOC # 0207584  
 Official Record  
 Recording - conducted by:  
 BARRICK GOLD EXPLORATION, INC.  
 Eureka County - NV  
 Mike Rebalcati - Recorder  
 Fee \$1,774.00 Page 1 of LLH  
 RPT1 Recorded by LLH  
 Book- Page- 0001

MAP OF LODE CLAIMS  
 RH 81 AND RX 1 THROUGH RX 117  
 WITHIN  
 SECTIONS 5, 6, 7, 8, T25N, R50E  
 AND  
 SECTIONS 20, 21, 22, 28, 29,  
 30, 31, 32, 33, T26N, R50E, M.D.M.  
 EUREKA COUNTY, NEVADA  
 BARRICK GOLD EXPLORATION INC.



24

19

20

T26N R49E

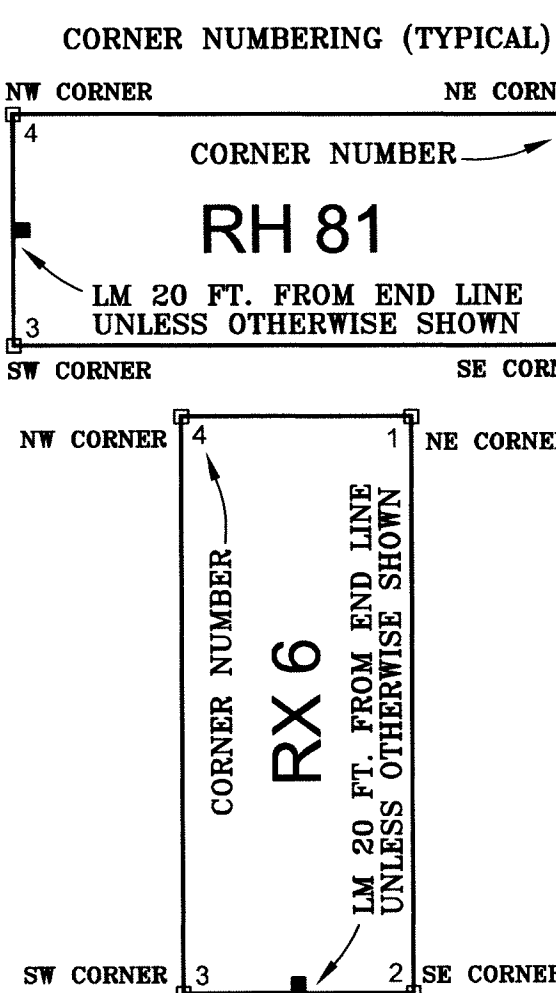
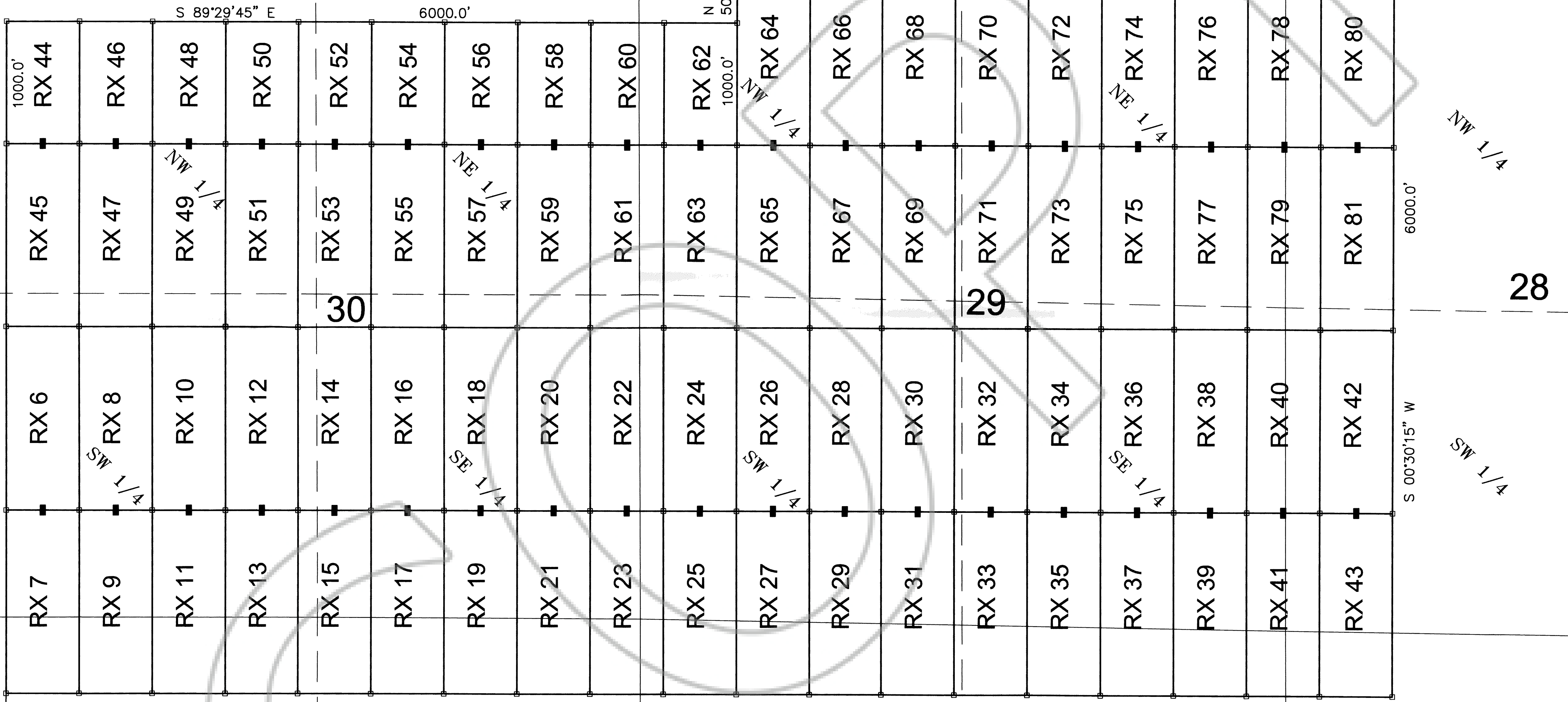
T26N R50E

SEE SHEET 3 OF 3

25

5500.0'

N 00°30'15" E

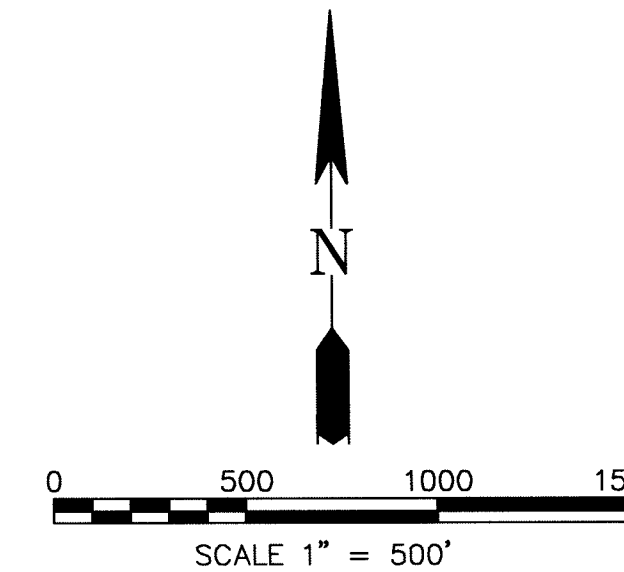


NOTES: Section lines are approximate.  
 1/4 Section lines are approximate.  
 Source, Nevada BLM GCDB  
 Basis of Bearings NAD27 NV SP East Zone

- LEGEND**
- Location Monument  
1.5" x 1.5" x 4' long wood post
  - Claim Corner  
1.5" x 1.5" x 4' long wood post
  - ◆ Found SECTION CORNER  
GLO Brass Cap 1922 on iron pipe
  - ◆ Found 1/4 SECTION CORNER  
GLO Brass Cap 1922 on iron pipe (bent)

**LOCATION DATES**  
 RH 81: October 27, 2006  
 RX 1, 2, 3, 4: December 7, 2006  
 RX 5: November 20, 2006  
 RX 6 through 81: November 30, 2006  
 RX 82 through 117: December 1, 2006

**LOCATOR:** BARRICK GOLD EXPLORATION INC.  
**ADDRESS:** 293 SPRUCE ROAD  
 ELKO, NEVADA 89801



**MAP OF LODGE CLAIMS**  
 RH 81 AND RX 1 THROUGH 117  
 WITHIN  
 SECTIONS 5, 6, 7, 8, T25N, R50E  
 AND  
 SECTIONS 20, 21, 22, 28, 29,  
 30, 31, 32, 33, T26N, R50E, M.D.M.  
 EUREKA COUNTY, NEVADA  
 BARRICK GOLD EXPLORATION INC.

SHEET 2 OF 3

36

SEE SHEET 1 OF 3

TIE FROM SW COR. SEC. 31  
 N01°41'59"E  
 4691.0'

31

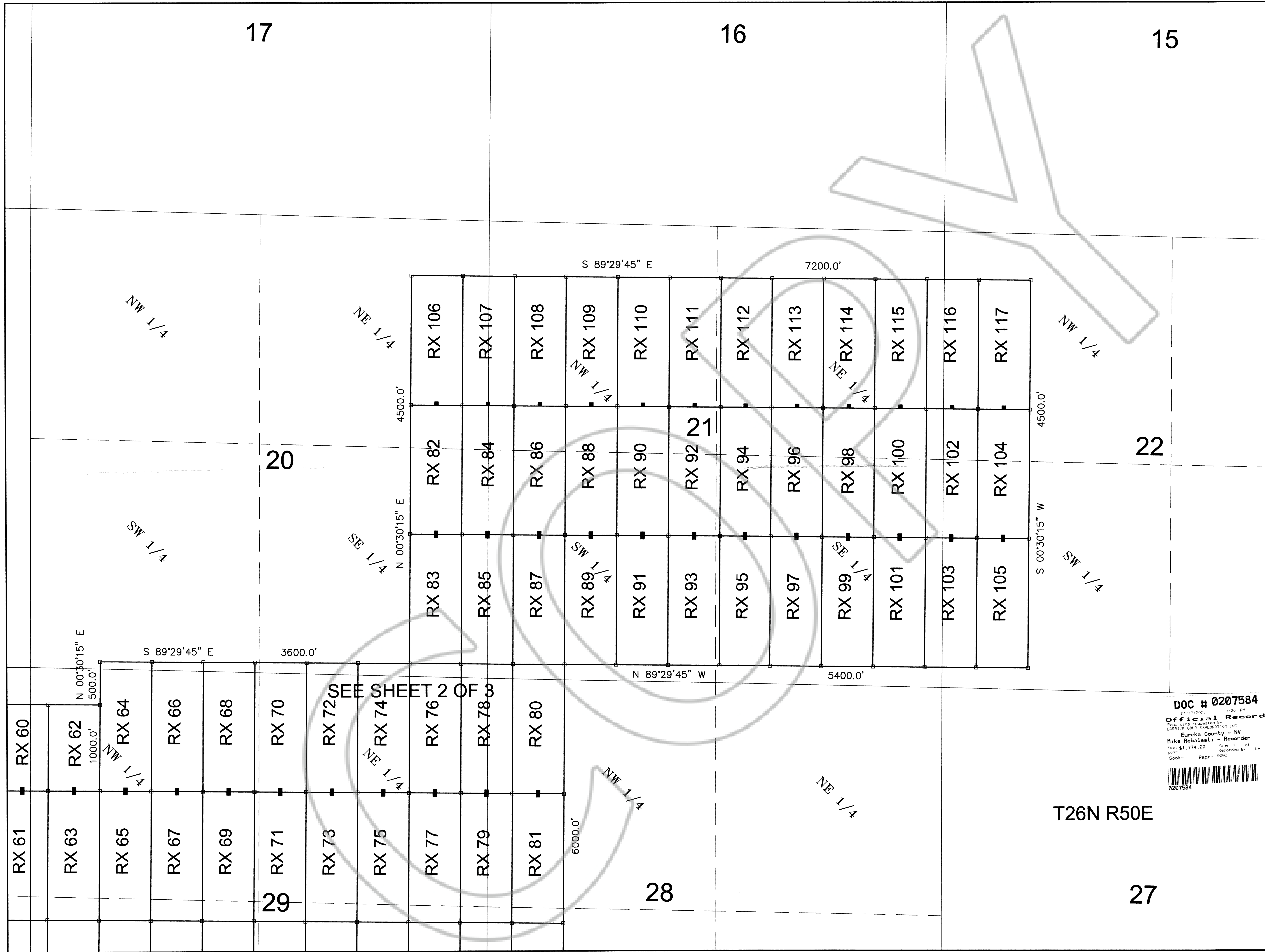
SEE SHEET 1 OF 3

32

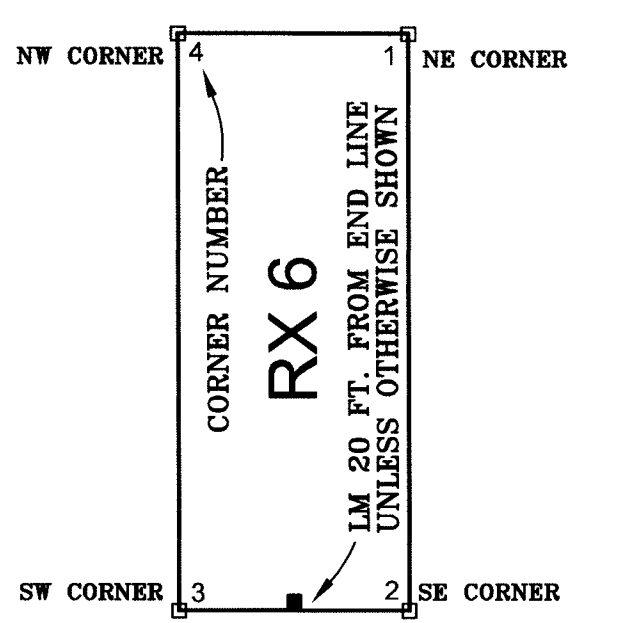
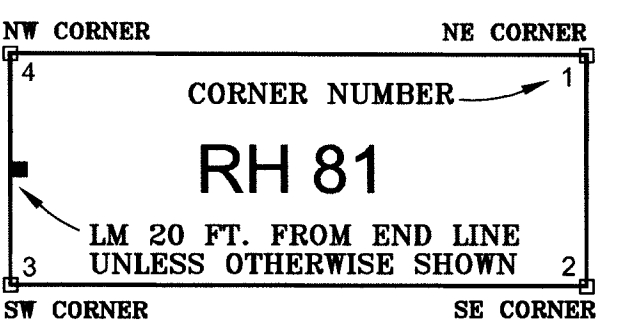
**DOC # 0207584**  
 01-17-2006 2-28-06  
**Official Record**  
 Recording Requested By  
 BARRICK GOLD EXPLORATION INC.  
 Eureka County - NV  
 Mike Rebaletti - Recorder  
 Fee \$1,774.00 Date 01-17-06  
 0211 Recorded By: LLH  
 Book- Page- 0000

33





CORNER NUMBERING (TYPICALS)



NOTES: Section lines are approximate.  
 1/4 Section lines are approximate.  
 Source, Nevada BLM GCDB  
 Basis of Bearings NAD27 NV SP East Zone

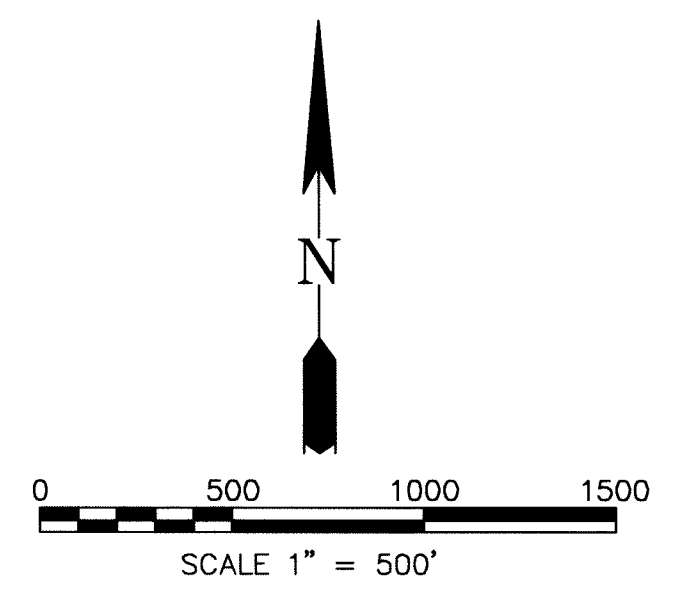
- LEGEND
- Location Monument  
1.5"x 1.5"x 4' long wood post
  - Claim Corner  
1.5"x 1.5"x 4' long wood post
  - ◆ Found SECTION CORNER  
GLO Brass Cap 1922 on iron pipe
  - ◆ Found 1/4 SECTION CORNER  
GLO Brass Cap 1922 on iron pipe (bent)

LOCATION DATES  
 RH 81: October 27, 2006  
 RX 1, 2, 3, 4: December 7, 2006  
 RX 5: November 20, 2006  
 RX 6 through 81: November 30, 2006  
 RX 82 through 117: December 1, 2006

LOCATOR: BARRICK GOLD EXPLORATION INC.  
 ADDRESS: 293 SPRUCE ROAD  
 ELKO, NEVADA 89801

DOC # 0207584

Official Record  
 Recording Jurisdiction By  
 BARRICK GOLD EXPLORATION INC  
 Eureka County - NV  
 Mike Rebalesi - Recorder  
 Fee: \$1,774.00 Page 1 of 1  
 Recorded By: LLH  
 Book - Page - 0000  
 0207584



T26N R50E

SEE SHEET 2 OF 3

MAP OF LODE CLAIMS  
 RH 81 AND RX 1 THROUGH 117  
 WITHIN  
 SECTIONS 5, 6, 7, 8, T25N, R50E  
 AND  
 SECTIONS 20, 21, 22, 28, 29,  
 30, 31, 32, 33, T26N, R50E, M.D.M.  
 EUREKA COUNTY, NEVADA  
 BARRICK GOLD EXPLORATION INC.  
 SHEET 3 OF 3