

SW

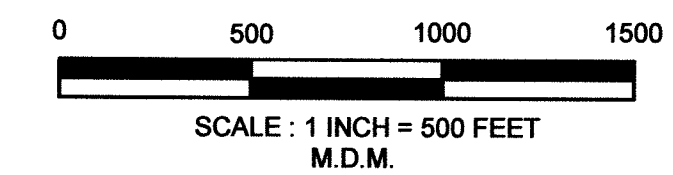
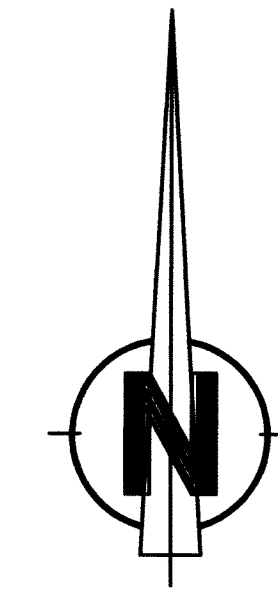
SE

SW

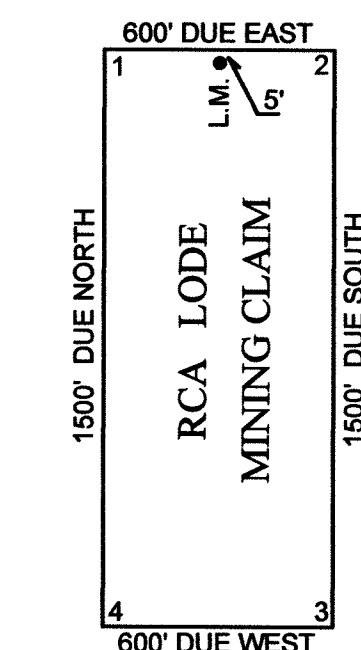
SE

SW

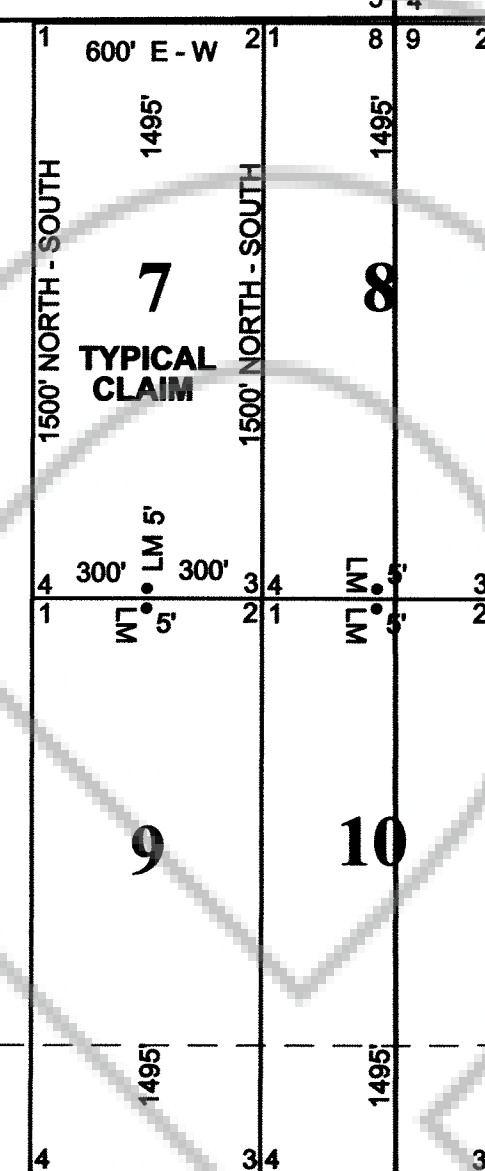
S



TYPICAL CLAIM & CORNER NUMBERS



TIE: From the SW Cor. Sec. 20, T35N, R48E, bear 15,792' S then 4195' E to the NW Cor., #1, of RCA 7



NW

NE

NW

NE

NW

N

LANDER COUNTY
EUREKA COUNTY

T34N
R48E

SW

SE

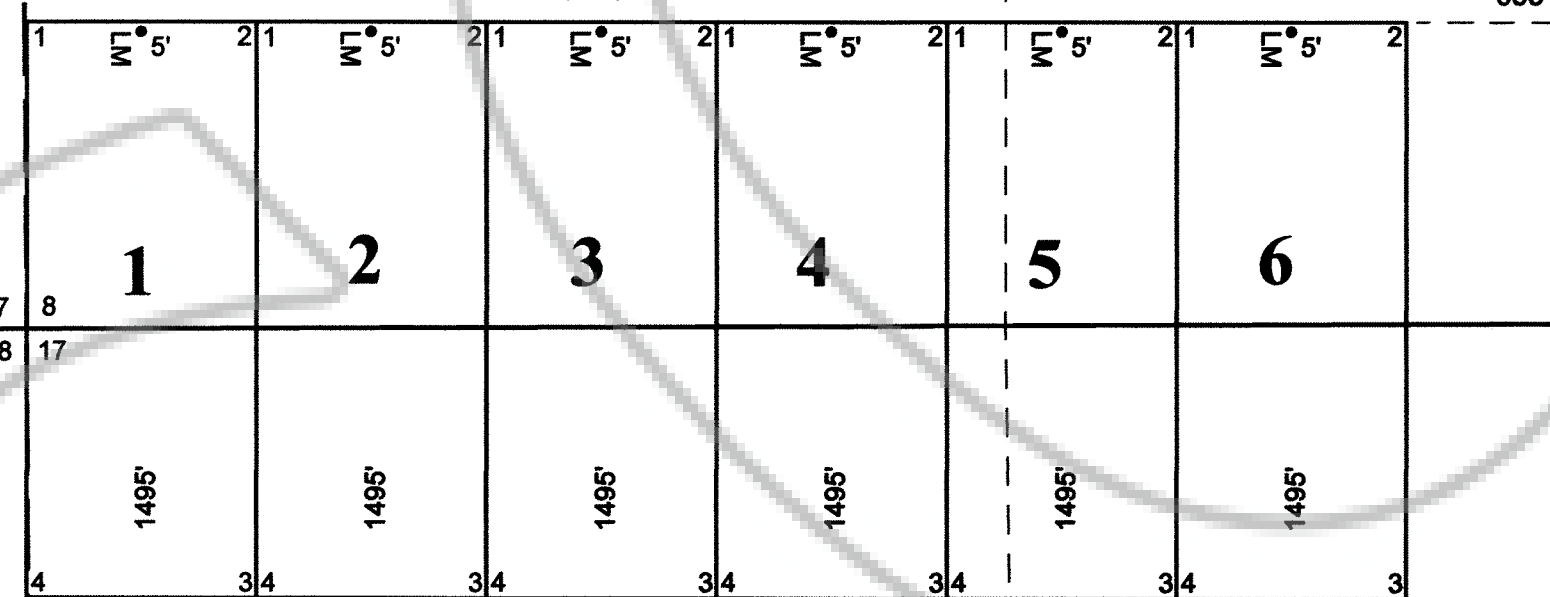
SW

SE

SW

S

TIE: From the SW Cor. Sec. 20, T35N, R48E, bear 20,292' S then 5' W to the NW Cor., #1, of RCA 1



UNSURVEYED TOWNSHIP SECTION LINE ARE PROJECTED.
TIES TO SECTION CORNERS ARE INDICATED ON MAP.
ALL CLAIMS ARE 600' WIDE X 1500' LONG UNLESS NOTED.
ALL LOCATION MONUMENTS ARE 5' IN FROM THE END CENTER UNLESS NOTED.
ALL LOCATION MONUMENTS AND CLAIM CORNERS ARE 2"x2"x4' WOOD POST.
UNSURVEYED TOWNSHIP SECTION LINES ARE PROJECTED.

LOCATION DATE:

NOVEMBER 1, 2006 RCA (1-10)

NW

NE

NW

NE

NW

N

LANDER COUNTY
EUREKA COUNTY

DOC # 0207606
Official Record
Eureka County - NV
Mike Rebeleati - Recorder
Fee: \$154.00
Book- Page- 0000

DUNCAN PARK HOLDINGS CORP.
P.O. BOX 941
ELKO, NEVADA 89822

RCA LODE MINING CLAIMS
NUMBERS [1-10]
SECTION'S 8, T34N, R48E, M.D.B.&M.
EUREKA COUNTY, NEVADA SHEET 1 of 1