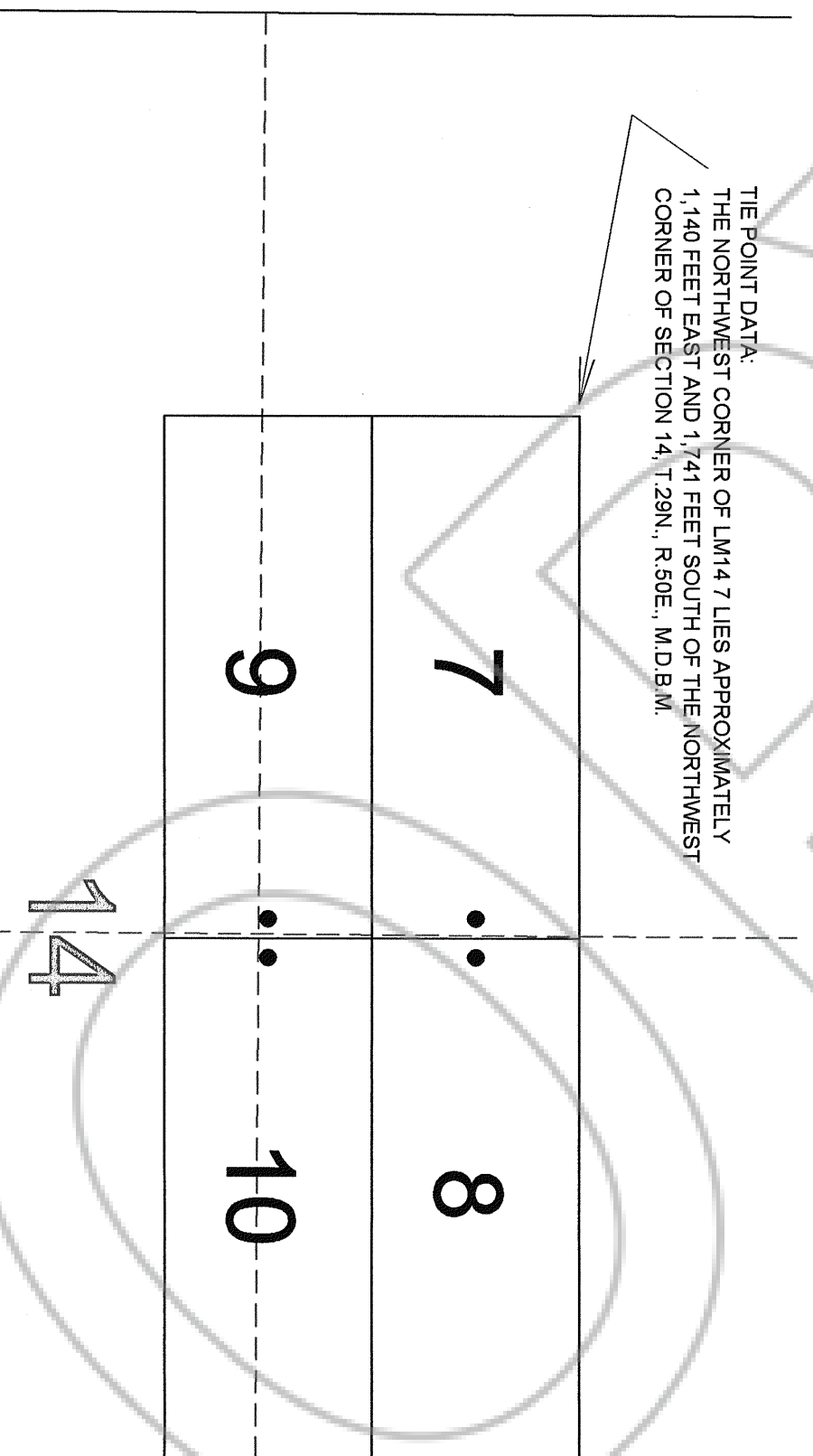
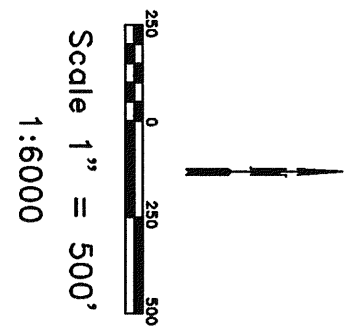


TIE POINT DATA:
 THE NORTHWEST CORNER OF LM14 7 LIES APPROXIMATELY
 1,140 FEET EAST AND 1,741 FEET SOUTH OF THE NORTHWEST
 CORNER OF SECTION 14, T.29N., R.50E., M.D.B.M.



NOTES:
 LOCATION MONUMENTS SET 10' FROM CLAIM END
 CENTERLINES. ALL LOCATION MONUMENTS AND CLAIM
 POSTS ARE 2"x2"x4" WOODEN STAKES.

LOCATION DATES:
 October 25, 2006 - LM14 7-10



DOC # 0207685
 01/22/2007 04:52 PM
Official Record
 Recording requested by
 PALISADE VENTURES
 Eureka County - NV
 Mike Rebaleati - Recorder
 Fee: \$64.00 Page 1 of
 RPTT: Recorded By: FES
 Book- Page- 0000

0207685

Palisade Ventures
 108 Fir Street, Reno, Nevada 89501-3025
 LM14 7-10 Lode Claims
 T.29N., R.50E., Eureka County, Nevada