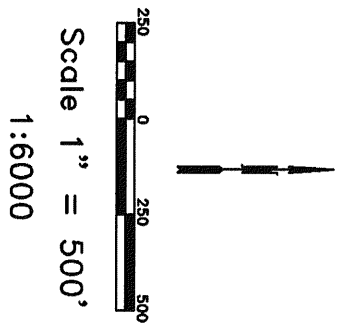


THE POINT DATA:  
 THE NORTHEAST CORNER OF LM16 16 LIES APPROXIMATELY  
 1,141 FEET WEST AND 4,141 FEET SOUTH OF THE NORTHEAST  
 CORNER OF SECTION 16, T.29N., R.50E., M.D.B.M.



NOTES:  
 LOCATION MONUMENTS SET 10' FROM CLAIM END  
 CENTERLINES. ALL LOCATION MONUMENTS AND CLAIM  
 POSTS ARE 2"x2"x4" WOODEN STAKES.  
 DASHED SECTION LINES INDICATE PROJECTED SECTIONS:

LOCATION DATES:  
 October 25, 2006 - LM16 15-18

**DOC # 0207690**  
 01/22/2007 04:59 PM  
**Official Record**  
 Recording requested By  
 PALISADE VENTURES  
 Eureka County - NV  
 Mike Rebaleti - Recorder  
 Fee: \$64.00 Page 1 of  
 RPTT: Recorded By: FES  
 Book- Page- 0000

0207690

**Palisade Ventures**  
 109 Ft. Street, Eureka, Nevada 89001-3023  
 LM16 15-18 Lode Claims  
 T.29N., R.50E.; Eureka County, Nevada