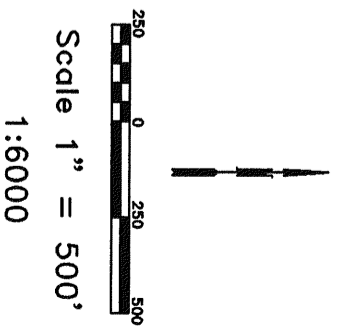
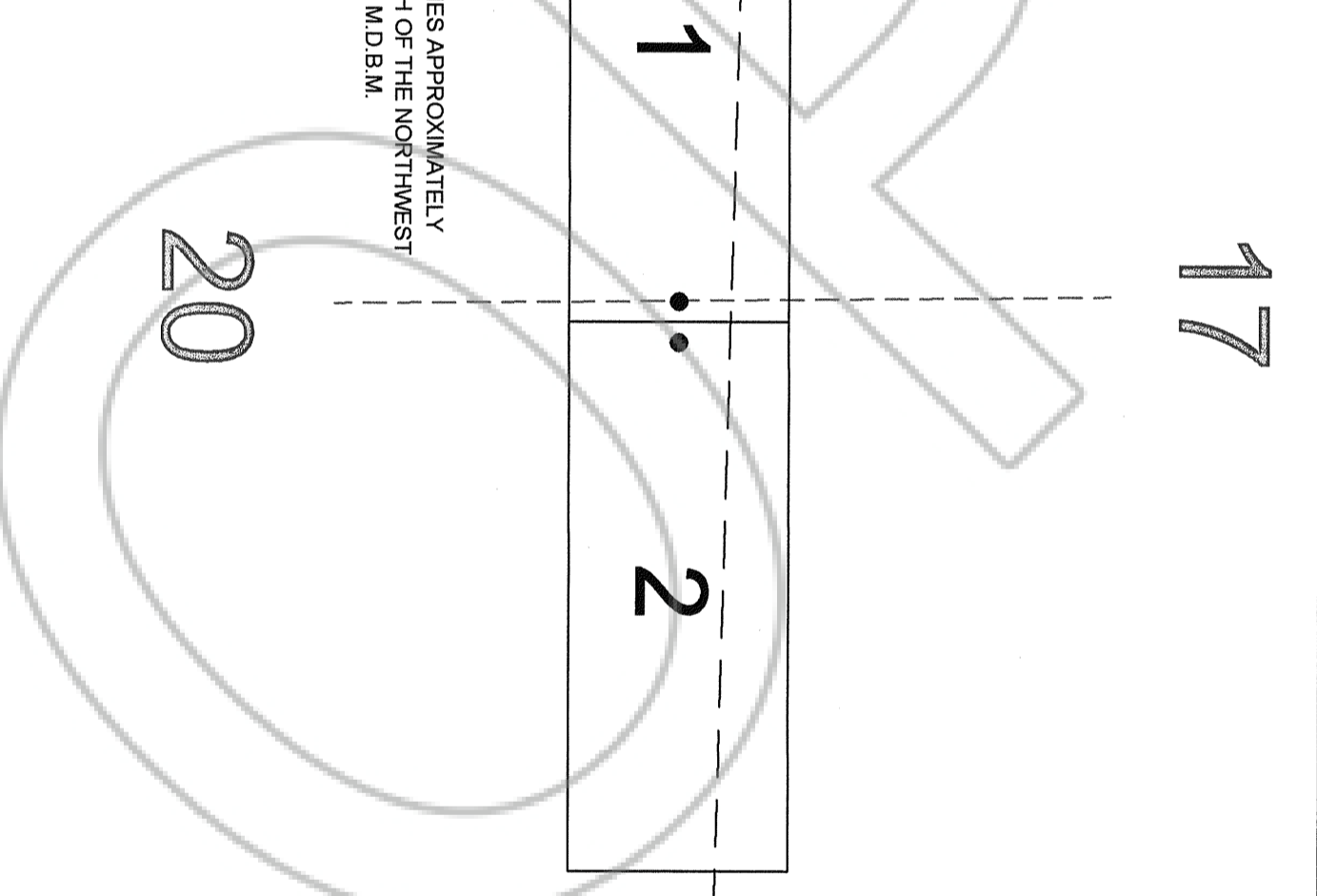


TYPICAL CLAIM

THE POINT DATA:  
 THE SOUTHWEST CORNER OF KN20 1 LIES APPROXIMATELY  
 6,270 FEET EAST AND 4,382 FEET NORTH OF THE NORTHWEST  
 CORNER OF SECTION 30, T.30N., R.51E., M.D.B.M.

NOTES:  
 LOCATION MONUMENTS SET 10' FROM CLAIM END  
 CENTERLINES. ALL LOCATION MONUMENTS AND CLAIM  
 POSTS ARE 2"x2"x4" WOODEN STAKES.  
 DASHED SECTION LINES INDICATE PROJECTED SECTIONS.



**DOC # 0207696**  
 01/22/2007 05:00 PM  
**Official Record**  
 Recording requested by  
 PALISADE VENTURES  
 Eureka County - NV  
 Mike Rebaletti - Recorder  
 Fee: \$34.00 Page 1 of  
 RPTT: Recorded By: FES  
 Book- Page- 0000

0207696

LOCATION DATES:  
 October 24, 2006 - KN20 1-2

**Casper Surveying & Mapping Services, Inc.**  
 309 N. A STREET, RENO, NV 89501  
 (775) 784-8888  
 (775) 784-8889

Client: **Palisade Ventures**  
 100 Fir Street, Blm, Nevada 89801-9023  
 KN20 1-2 Lode Claims  
 T.30N., R.51E., Eureka County, Nevada