

DRAWING NUMBER

DRAWING NUMBER

DRAWING NUMBER

DRAWING NUMBER

A.O.S. Palisade  
T32N R51E Sec 35 & 36

SAFECO PRODUCTS • NEW HOPE, MINNESOTA  
REPRODUCED BY PART NUMBER 8571  
REPRODUCED BY PART NUMBER 8571

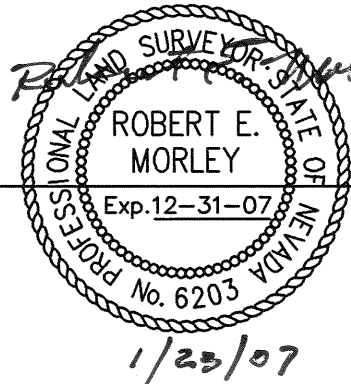
SAFECO PRODUCTS • NEW HOPE, MINNESOTA  
REPRODUCED BY PART NUMBER 8571  
REPRODUCED BY PART NUMBER 8571

LINE TABLE		
LINE	DIRECTION	DISTANCE
L1	N 54°08'31" E	30.00
L2	S 00°08'31" W	37.54
L3	S 00°08'31" W	13.50
L4	S 00°08'31" W	90.74
L5	N 54°08'31" E	53.33
L6	S 00°08'31" W	14.97
L7	S 00°08'31" W	29.98
L8	S 00°08'31" W	4.50
L9	S 00°08'31" W	53.48
L10	S 00°08'31" W	29.42
L11	S 00°08'31" W	24.06
L12	S 00°08'31" W	46.04
L13	N 54°08'31" E	3.41
L14	S 00°08'31" W	5.89
L15	N 54°08'31" E	14.70(M) 14.07(R)
L16	N 35°40'56" E	20.00
L17	N 54°08'31" E	14.90
L18	N 35°40'56" E	70.98
L19	N 45°38'31" E	33.49(M) 33.10(R)
L20	N 54°08'31" E	65.40
L21	N 35°51'29" W	43.27
L22	S 44°21'29" W	100.00
L23	N 56°38'31" E	22.80
L24	S 35°51'29" E	29.14
L25	S 35°51'29" E	30.00
L26	N 54°08'31" E	25.00
L27	N 54°08'31" E	5.10
L28	N 57°11'42" E	28.67
L29	N 35°51'29" W	73.41
L30	N 35°51'29" W	114.70
L31	N 54°08'31" E	120.00
L32	N 54°04'56" E	5.17(M) 32.90(R)
L33	N 54°04'56" E	25.00
L34	N 54°04'56" E	90.00
L35	N 54°04'56" E	52.00
L36	N 43°33'26" E	25.00
L37	N 43°33'26" E	18.09(M) 12.00(R)
L38	N 13°33'00" E	30.00
L39	S 46°28'34" E	100.00
L40	N 43°33'26" E	4.91
L41	N 13°33'00" E	15.36
L42	N 13°33'00" E	30.00
L43	N 13°33'00" E	25.00
L44	S 76°27'00" E	80.00
L45	N 13°33'00" E	91.43
L46	S 76°27'00" E	20.00
L47	S 76°27'00" E	30.00
L48	S 76°27'00" E	50.00
L49	N 13°33'00" E	35.00
L50	N 43°33'26" E	39.99
L51	S 00°08'31" W	27.22
L52	N 45°19'34" E	35.00
L53	N 45°19'34" E	25.00
L54	N 45°19'34" E	40.00

LINE TABLE		
LINE	DIRECTION	DISTANCE
L55	N 34°50'33" E	28.00
L56	N 24°19'35" E	25.00
L57	N 13°33'00" E	56.80(M) 59.60(R)
L58	N 43°33'26" E	59.89(M) 61.90(R)
L59	N 44°40'26" W	59.87(WC) 95.00(R)
L60	N 44°40'26" W	61.84(WC) 90.00(R)
L61	N 44°40'26" W	63.26(WC) 95.00(R)
L62	N 44°40'26" W	64.67(WC) 95.00(R)
L63	N 44°40'26" W	66.79(WC) 100.00(R)
L64	N 44°40'26" W	68.92(WC) 100.00(R)
L65	N 44°40'26" W	71.04(WC) 100.00(R)
L66	N 44°40'26" W	70.50(WC) 100.00(R)
L67	N 44°40'26" W	69.95(WC) 100.00(R)
L68	N 44°40'26" W	69.41(WC) 110.00(R)
L69	N 44°40'26" W	68.03(WC) 100.00(R)
L70	N 55°09'23" W	66.26(WC) 100.00(R)
L71	N 55°09'23" W	70.55(WC) 100.00(R)
L72	N 55°09'23" W	74.83(WC) 95.00(R)
L73	N 55°09'23" W	79.12(WC) 95.00(R)
L74	N 55°09'23" W	80.49(WC) 90.00(R)
L75	N 55°09'23" W	77.94(WC) 90.00(R)
L76	N 55°09'23" W	75.39(WC) 85.00(R)
L77	N 55°09'23" W	72.84(WC) 85.00(R)
L78	N 55°09'23" W	70.28(WC) 80.00(R)
L79	N 55°09'23" W	67.73(WC) 80.00(R)
L80	N 55°09'23" W	65.18(WC) 80.00(R)
L81	N 55°09'23" W	62.63(WC) 75.00(R)
L82	N 65°40'25" W	54.87(WC) 70.00(R)
L83	N 65°40'25" W	52.44(WC) 65.00(R)
L84	N 65°40'25" W	54.56(WC) 65.00(R)
L85	N 65°40'25" W	46.79(WC) 70.00(R)
L86	N 65°40'25" W	39.02(WC) 70.00(R)
L87	N 65°40'25" W	33.24(WC) 70.00(R)
L88	N 65°40'25" W	27.46(WC) 70.00(R)
L89	N 65°40'25" W	27.48(WC) 70.00(R)
L90	N 65°40'25" W	27.50(WC) 65.00(R)
L91	N 65°40'25" W	24.25(WC) 65.00(R)
L92	S 69°10'13" E	20.87(WC) 62.00(R)
L93	N 48°33'40" E	35.06
L94	N 48°33'40" E	25.04
L95	N 50°10'52" E	25.09
L96	N 44°04'43" E	25.01
L97	N 42°09'55" E	25.04
L98	N 42°09'55" E	52.13
L99	N 44°34'27" E	25.36
L100	N 37°58'35" E	25.04
L101	N 29°01'06" E	25.13
L102	N 20°54'38" E	36.08
L103	N 18°46'34" E	25.12
L104	N 28°10'15" E	25.09
L105	N 07°03'51" E	26.18
L106	N 11°18'29" E	25.66
L107	N 24°22'22" E	25.00
L108	N 16°54'51" E	25.21

## SURVEYOR'S CERTIFICATE

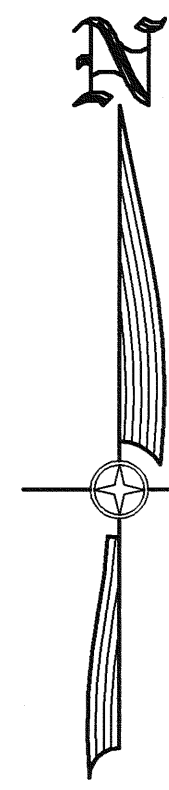
- I, ROBERT E. MORLEY, A PROFESSIONAL LAND SURVEYOR LICENSED IN THE STATE OF NEVADA, CERTIFY THAT:
- THIS PLAT REPRESENTS THE RESULTS OF A SURVEY CONDUCTED UNDER MY DIRECT SUPERVISION AT THE INSTANCE OF FRANK SEXTON.
  - THE LANDS SURVEYED LIE WITHIN SECTION 35 & 36, T.32 N., R.51 E., M.D.B. & M., AND THE SURVEY WAS COMPLETED ON NOVEMBER 16, 2006.
  - THIS PLAT COMPLIES WITH THE APPLICABLE STATE STATUTES AND ANY LOCAL ORDINANCES IN EFFECT ON THE DATE THAT THE GOVERNING BODY GAVE ITS FINAL APPROVAL.
  - THE MONUMENTS DEPICTED ON THE PLAT ARE OF THE CHARACTER SHOWN, AND OCCUPY THE POSITIONS INDICATED.



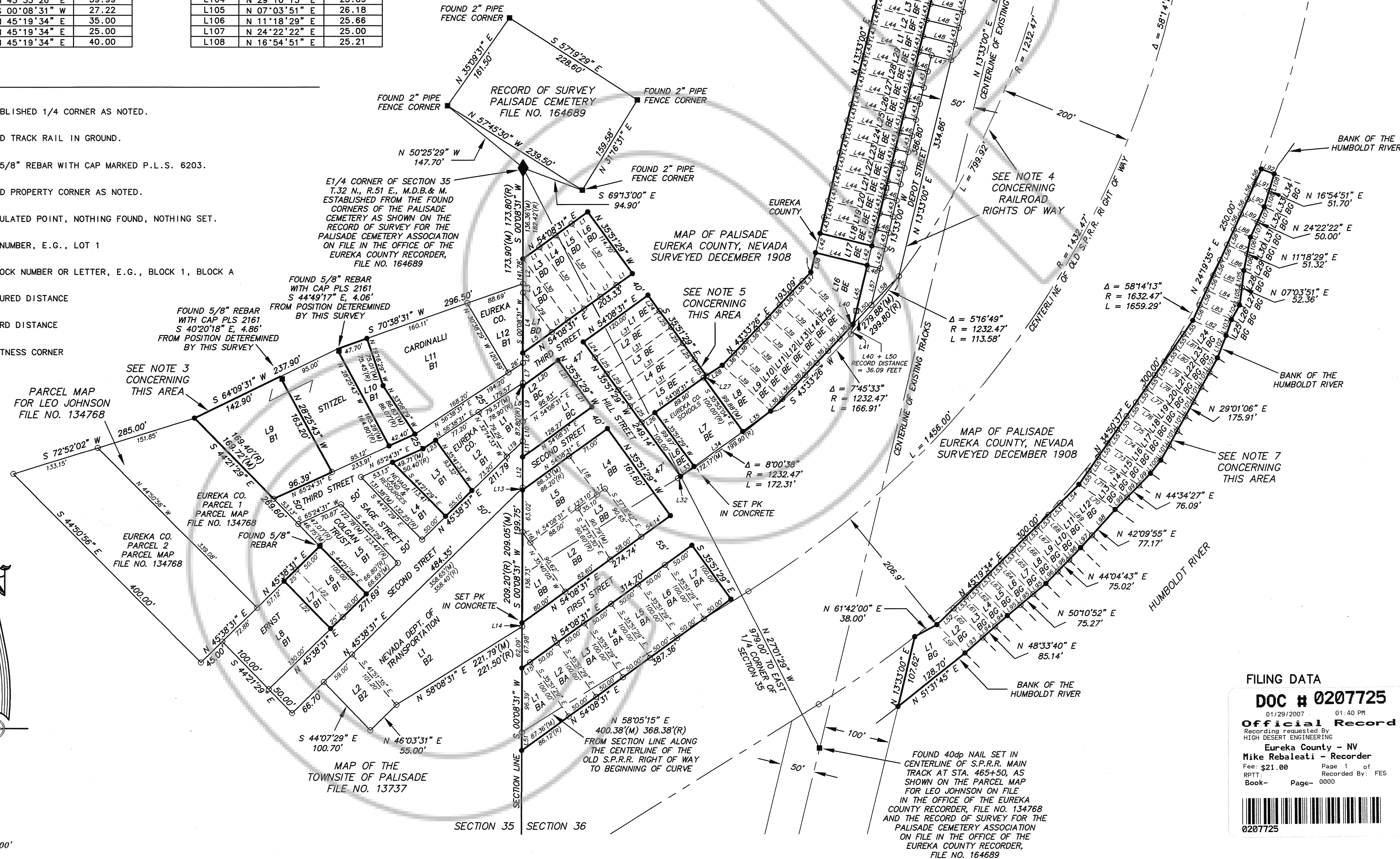
ROBERT E. MORLEY, P.L.S. 6203

## LEGEND

- ◆ = ESTABLISHED 1/4 CORNER AS NOTED.
- ▣ = FOUND TRACK RAIL IN GROUND.
- = SET 5/8" REBAR WITH CAP MARKED P.L.S. 6203.
- = FOUND PROPERTY CORNER AS NOTED.
- = CALCULATED POINT, NOTHING FOUND, NOTHING SET.
- L1 = LOT NUMBER, E.G., LOT 1
- B1 BA = BLOCK NUMBER OR LETTER, E.G., BLOCK 1, BLOCK A
- (M) = MEASURED DISTANCE
- (R) = RECORD DISTANCE
- (WC) = WITNESS CORNER



1"=100'



## NOTES:

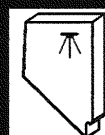
- THE TOTAL AREA SURVEYED SHOWN ON THIS MAP EQUALS 7.260 ACRES.
- BASIS OF BEARINGS: THE CENTERLINE OF THE EXISTING SOUTHERN PACIFIC RAILROAD TRACKS BEING THE CENTERLINE OF THE RAILROAD RIGHT OF WAY, TAKEN AS N 13° 33' 00" E.
- THE 1/4 CORNER AND SECTION LINE COMMON TO SECTIONS 35 AND 36 AND THE POSITION OF THE LOTS AND BLOCKS LOCATED IN SECTION 35 AS SHOWN ON THE MAP OF THE TOWNSITE OF PALISADE ON FILE IN THE OFFICE OF THE EUREKA COUNTY RECORDER, EUREKA, NEVADA, AS FILE NO. 13737 WERE ESTABLISHED USING THE FOUND CORNERS OF THE PALISADE CEMETERY, THE NAIL FOUND IN THE CENTERLINE OF THE TRACKS OF THE EXISTING SOUTHERN PACIFIC RAILROAD AT STATION 465+50 AND THE FOUND 5/8" REBAR LOCATED AT THE MOST NORTHERLY CORNER OF LOT 6, IN BLOCK 1 OF SAID PALISADE TOWNSITE. THESE FOUND CORNERS ARE REFLECTED ON THE RECORD OF SURVEY FOR THE PALISADE CEMETERY, FILE NO. 164689, AND THE PARCEL MAP FOR LEO JOHNSON, FILE NO. 134768, BOTH ON FILE IN THE OFFICE OF THE EUREKA COUNTY RECORDER, EUREKA, NEVADA.
- THE POSITION OF THE EXISTING AND OLD RIGHTS OF WAY FOR THE SOUTHERN PACIFIC RAILROAD WERE ESTABLISHED USING THE NAIL FOUND IN THE CENTERLINE OF THE EXISTING TRACKS LOCATED AT STATION 465+50 AND SURVEYING THE CENTERLINE OF THE EXISTING TRACKS FOR THE BEARING OF THOSE TRACKS. THE CENTERLINE AND RIGHTS OF WAY WERE THEN CALCULATED USING THE SOUTHERN PACIFIC COMPANY'S RIGHT OF WAY, TRACK MAP, AND STATION MAP DESIGNATED V-3, SHEET 27 FOR THIS AREA. IT SHOULD BE NOTED THAT THE MAP OF PALISADE FOR THE LOTS AND BLOCKS LOCATED IN SECTION 36 SURVEYED IN 1908 ON FILE IN THE OFFICE OF THE EUREKA COUNTY RECORDER, EUREKA, NEVADA, SHOWS THE WIDTH OF THE RIGHT OF WAY OF THE EXISTING SOUTHERN PACIFIC RIGHT OF WAY AS BEING 50 FEET NORTHWESTERLY OF THE CENTERLINE OF THE TRACKS IN THE AREA THAT FRONTS BLOCKS E AND F. THE RAILROAD MAPS (V-3, SHEET 27) SHOW THE WIDTH OF THE RIGHT OF WAY IN THIS AREA AS BEING 100 FEET NORTHWESTERLY OF THE EXISTING TRACKS WHICH WOULD TAKE OFF THE FRONT PORTION OF THE LOTS AND STREET IN BLOCK E AND F. THIS SURVEYOR CONTACTED THE RIGHT OF WAY DEPARTMENT OF THE UNION PACIFIC RAILROAD IN OMAHA, NEBRASKA FOR CLARIFICATION OF THIS DISCREPANCY AND WAS INFORMED THAT THE RIGHT OF WAY IS INDEED 100 FEET FROM THE CENTERLINE OF THE TRACKS. THIS WAS VERIFIED DUE TO THE FACT THAT RAILROAD RAILS DRIVEN VERTICALLY IN THE GROUND MARKED "RAILROAD PROPERTY" WERE FOUND LOCATED PLUS OR MINUS 100 FEET FROM THE CENTERLINE OF THE TRACKS. THE LOCATION OF THESE RAILS IS SHOWN HEREON.
- THE POSITION OF BLOCKS A, B, C, D, AND LOTS 1 THROUGH 8 OF BLOCK E AS SHOWN ON THE MAP OF PALISADE SURVEYED IN 1908 LOCATED IN SECTION 36 WERE LOCATED BY DETERMINING THE BEGINNING OF THE CURVE OF THE NORTHWESTERLY RIGHT OF WAY OF THE OLD SOUTHERN PACIFIC RAILROAD RIGHT OF WAY LOCATED NEAR THE MOST SOUTHERLY CORNER OF LOT 6 BLOCK E AS STATED IN NOTE 4 ABOVE. THE MOST SOUTHERLY CORNER OF LOT 6, BLOCK E WAS THEN POSITIONED ON A CHORD BEARING FROM THE BEGINNING OF SAID CURVE AND THE SOUTHEASTERLY CORNER OF LOT 8, BLOCK E LOCATED ON THE CURVE OF THE NORTHWESTERLY RIGHT OF WAY OF THE RAILROAD SO THAT A RECORD DIMENSION WAS OBTAINED FOR THE NORTHWESTERLY LINE OF BLOCK D FROM THE MOST NORTHERLY CORNER OF LOT 6, BLOCK D, TO THE ESTABLISHED SECTION LINE. THE LINES OF THE OTHER BLOCKS WERE ESTABLISHED AT RECORD DIMENSIONS AS CLOSELY AS POSSIBLE FROM THE ESTABLISHED NORTH LINE OF BLOCK D. THE SOUTHWESTERLY LINE OF LOT 9, BLOCK E, WAS GIVEN A RECORD LENGTH OF 100 FEET AND THE LINES FOR LOTS 10 THROUGH 15, BLOCK E, WERE ESTABLISHED AT RECORD WIDTHS ALONG THE CHORD FROM THE MOST SOUTHERLY CORNER OF LOT 9, BLOCK E, TO THE INTERSECTION OF A LINE 50 FEET NORTHWESTERLY OF THE EXISTING RAILROAD TRACKS ON THE CURVE OF THE OLD SOUTHERN PACIFIC RAILROAD RIGHT OF WAY. THE ERROR IN THE CHORD DISTANCE ON THE ORIGINAL TOWN MAP WAS LEFT IN LOT 16, BLOCK E, AS WAS THE ODD DISTANCE ON THE ORIGINAL MAP. THIS SURVEYOR TRIED LOCATING THESE BLOCKS USING THE RECORD TIE FROM THE 1/4 CORNER COMMON TO SECTIONS 35 AND 36 TO THE MOST WESTERLY CORNER OF LOT 3, BLOCK D. IN DOING SO THE STREET ON ONE SIDE OF THE SECTION LINE DID NOT LINE UP WITH THE STREETS ON THE EAST SIDE OF THE SECTION LINE SO THIS METHOD WAS NOT USED AND THE TIE STATED ABOVE WAS REGARDED AS INCORRECT.
- THE POSITION OF LOTS 17 THROUGH 29, BLOCK E, AND LOTS 1 THROUGH 27, BLOCK F WERE DETERMINED BY PLACING THE FRONT OF SAID LOTS ON THE LINE 50 FEET NORTHWESTERLY OF THE CENTERLINE OF THE EXISTING TRACKS AS SHOWN ON THE ORIGINAL TOWN MAP. THE LINE BETWEEN LOT 16 AND LOT 17 WAS SET AT A RECORD DISTANCE OF 30 FEET FROM THE ANGLE POINT ON THE BACK LINE OF BLOCK E AND THE OTHER LOTS LAID OUT AT RECORD WIDTHS AS SHOWN. SEE NOTE 4 REGARDING THE RIGHTS OF WAY FOR THE RAILROAD AS SHOWN ON THE OLD TOWN MAP AND THE SOUTHERN PACIFIC RAILROAD RIGHT OF WAY MAPS.
- THE POSITION OF THE LOTS IN BLOCK G WERE DETERMINED BY PLACING THE FRONT LOT CORNER COMMON TO LOTS 1 AND 2, BLOCK G, AT THE RECORD DIMENSION OF 38.00 FEET FROM THE INTERSECTION OF THE SOUTHEASTERLY RIGHT OF WAY OF THE EXISTING TRACKS WHERE IT INTERSECTS THE SOUTHEASTERLY RIGHT OF WAY CURVE OF THE OLD RIGHT OF WAY AND AT THE RECORD DIMENSION OF 206.9 FEET FROM THE CENTERLINE OF THE OLD RAILROAD RIGHT OF WAY. THE OTHER LOTS WERE LAID OUT RECORD ALONG THE CHORDS TANGENT TO THE CURVED RIGHT OF WAY AS SHOWN ON THE ORIGINAL MAP. THE RECORD DIMENSIONS OF THE SIDELINES OF LOTS 1 THROUGH 34 ARE SHOWN IN THE LINE TABLE NEXT TO THE DISTANCES AT WHICH THE POINTS FOR THIS SURVEY WERE SET. THE LINES LISTED IN THE TABLE AS LINE 59 TO LINE 92 AND LABELED WC ARE WITNESS CORNERS TO THE TRUE CORNER AT THE RECORD DIMENSION SHOWN. THE WITNESS CORNERS ARE SET AT THE BANK OF THE HUMBOLDT RIVER DUE TO THE FACT THE TRUE CORNER LANDS IN THE RIVER.
- THIS MAP SHOWS THE LOCATION OF THE LOTS OWNED BY JOHN G. AND FRANK R. SEXTON. THE OWNERSHIP OF THE LOTS WAS DETERMINED BY USING INFORMATION AS DOCUMENTED BY THE EUREKA COUNTY ASSESSOR'S OFFICE. THE OTHER OWNERS OF RECORD FOR THE REST OF THE LOTS IN THE TOWN OF PALISADE ACCORDING TO THE EUREKA COUNTY ASSESSOR ARE:  
  
BLOCK 1  
LOTS 1,2-EUREKA CO. SCHOOL; LOT 4-NEVADA LAND & RESOURCE; LOT 5-COLGAN TRUST; LOT 8-ERNST; PORTION LOT 9-STITZEL; LOT 11-CARDINALLI; LOT 12-EUREKA CO.  
  
BLOCK 2  
LOTS 1,2-NEVADA DEPARTMENT OF TRANSPORTATION  
  
BLOCK E  
LOT 7-EUREKA CO. SCHOOLS; LOT 17-EUREKA CO.  
  
BLOCK F  
LOTS 8,9-EUREKA COUNTY
- A DILIGENT SEARCH FOR ANY EXISTING LOT CORNERS OR LINES OF POSSESSION WAS MADE DURING THE PROCESS OF THIS SURVEY AND NONE WERE FOUND EXCEPT AS SHOWN HEREON.

## FILING DATA

DOC # 0207725  
01/29/2007 01:40 PM  
Official Record  
Recording requested by  
HIGH DESERT ENGINEERING  
Eureka County - NV  
Mike Rebaletti - Recorder  
Fee \$21.00 Page 1 of 1  
RPT# Recorded By: FES  
Book-- Page-- 0000  
0207725

SCALE: 1"=100'

RECORD OF SURVEY  
OF THE TOWN OF PALISADE, NEVADA  
FOR  
JOHN G. & FRANK R. SEXTON  
IN  
SECTION 35 & 36, T.32 N., R.51 E., M.D.B. & M.  
EUREKA COUNTY, NEVADA



HIGH  
DESERT  
ENGINEERING  
640 IDAHO STREET  
ELKO, NEVADA 89801  
(775) 738-4053

206111