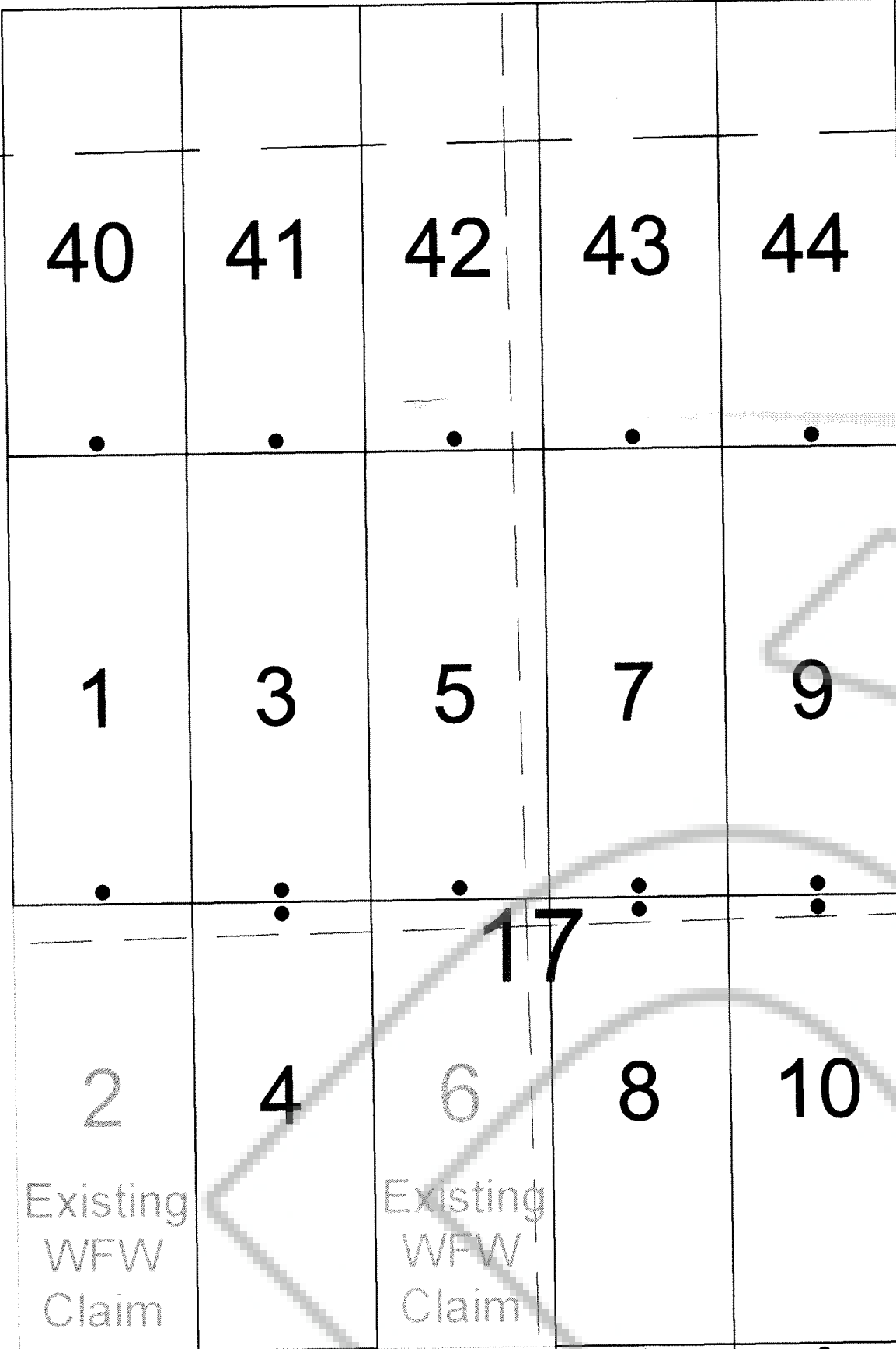
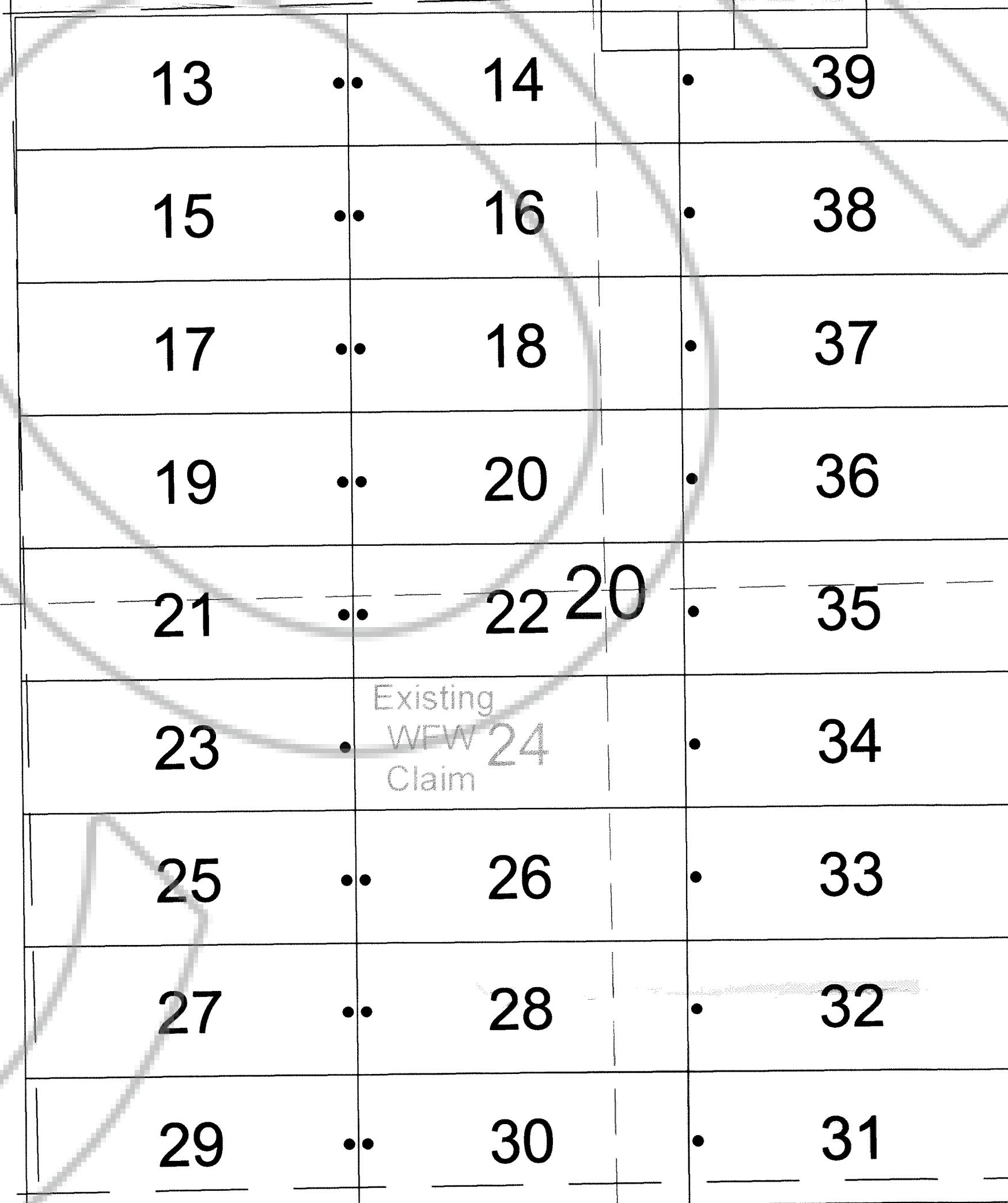


TIE POINT DATA:
THE NORTHEAST CORNER OF WFW 44 LIES APPROXIMATELY
1,287 FEET WEST AND 412 FEET NORTH OF THE NORTHEAST
CORNER OF SECTION 17, T.31N., R.51E., M.D.B.M.

8



TIE POINT DATA:
THE NORTHEAST CORNER OF WFW 39 LIES APPROXIMATELY
577 FEET WEST AND 5,411 FEET SOUTH OF THE NORTHEAST
CORNER OF SECTION 17, T.31N., R.51E., M.D.B.M.



19

30

29

LOCATION DATES:
November 15, 2006 - WFW 1,3-5,7-23,25-44

(41 Total Claims)

NOTES:
LOCATION MONUMENTS SET 10' FROM CLAIM END
CENTERLINES. ALL LOCATION MONUMENTS AND CLAIM
POSTS ARE 2"x2"x4" WOODEN STAKES.

DASHED SECTION LINES INDICATE PROJECTED SECTIONS.

DOC # 0207813
02/09/2007 04:26 PM
Official Record
RECORDED & INDEXED BY:
WFW RESOURCES, LLC
Eureka County - NV
Mike Rebaletti - Recorder
Fee: \$619.00 Page: 1 of 1
Recorded By: FES
Book: Page: 0000



Locator:
WFW Resources, LLC
441 Fir Street, Elko, Nevada 89801
WFW Lode Claims
T.31N., R.51E.; Eureka County, Nevada

DATE: January 2007
ACAD FILE NAME: 0207813.dwg
PLOT SCALE: 1" = 500'
DRAWN BY: smm

369 - 5th STREET
PH: (775) 778-0668 ELKO, NV 89801