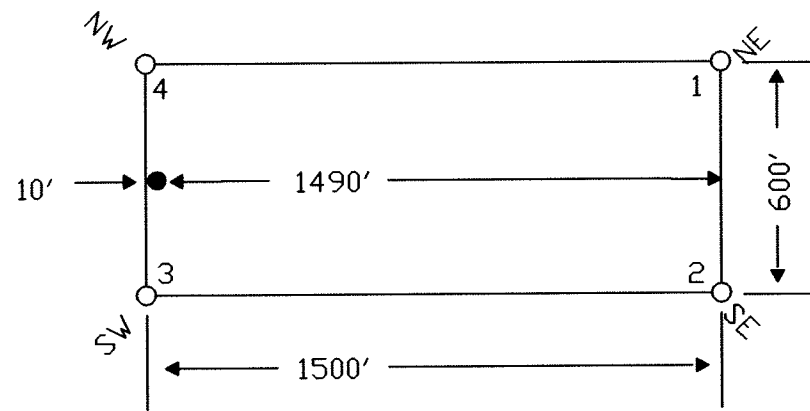
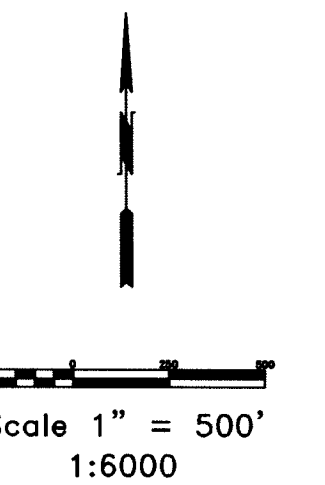


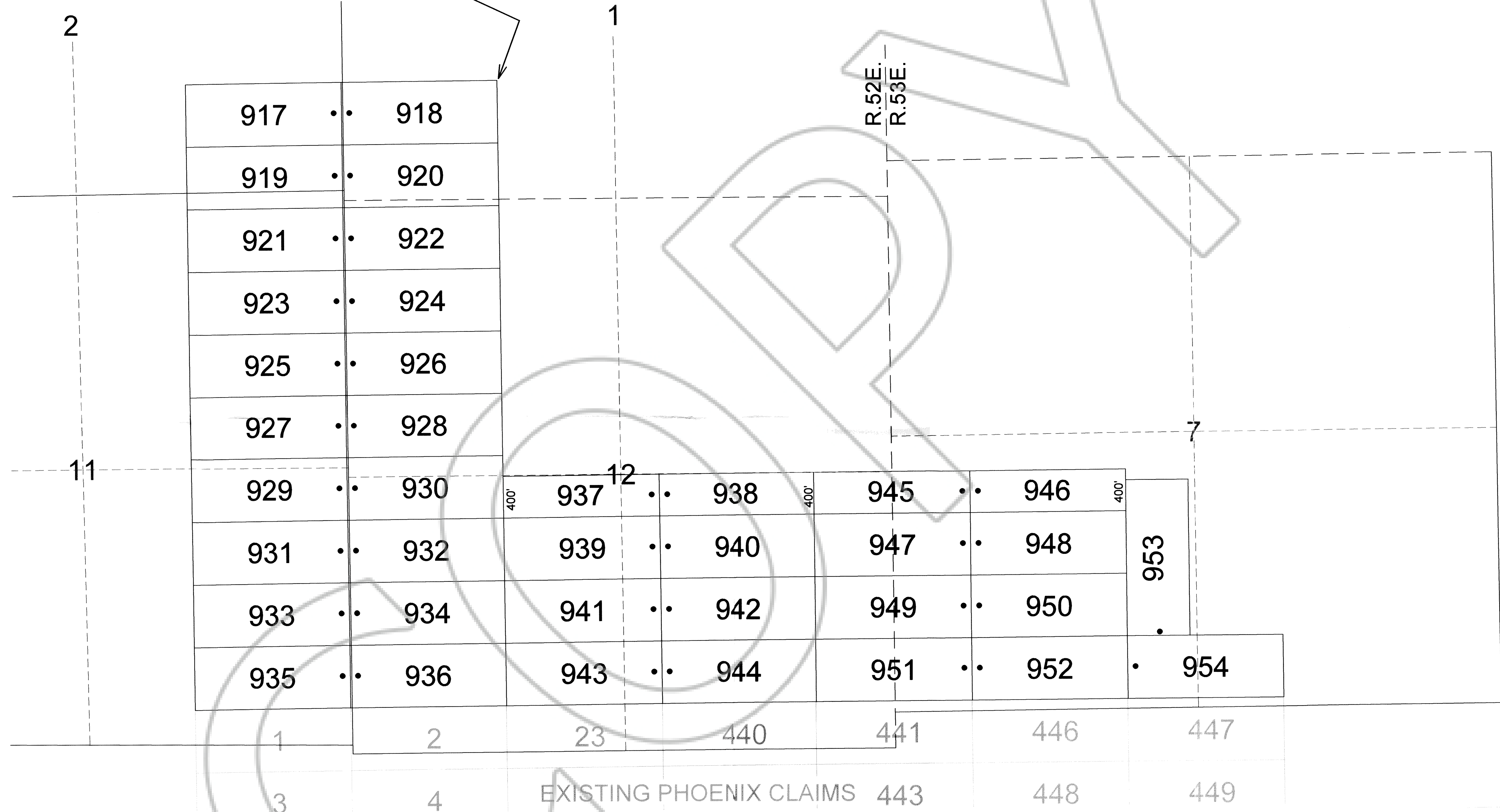
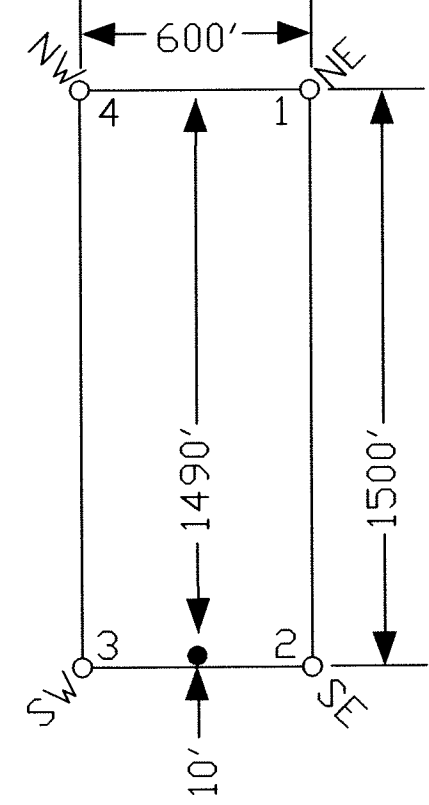
TYPICAL CLAIM



TIE POINT DATA:
THE NORTHEAST CORNER OF PHOENIX 918 LIES APPROXIMATELY
1,475 FEET EAST AND 1,147 FEET NORTH OF THE SOUTHWEST CORNER
OF SECTION 1, T.27N., R.52E., M.D.B.M.



TYPICAL CLAIM



NOTES:
LOCATION MONUMENTS SET 10' FROM CLAIM END
CENTERLINES. ALL LOCATION MONUMENTS AND CLAIM
POSTS ARE 2"x2"x4' WOODEN STAKES.

DASHED SECTION LINES INDICATE PROJECTED SECTIONS.

LOCATION DATES:
November 14, 2006 - Phoenix 921-936
November 15, 2006 - Phoenix 917-920, 945-954
November 16, 2006 - Phoenix 937-944

(38 Total Claims)

DOC # 0207854
02/15/2007 01:12 PM
Official Record
Recording Requested By:
CCLDLS OFFSHORE USA INC.
Eureka County - NV
Mike Rebaletti - Recorder
Fee: \$570.00 Page: 1 of 1
SETT. Recorded By: FES
Book- Page- 000
0207854

Locator: Golden Gryphon USA Inc.
1400 Tanager place RR21, Roberts Creek, BC V0N 2W1
Phoenix 917-954 Lode Claims
T.27N., R.52, 53E; Eureka County, Nevada

369 - 5th STREET
PH: (775) 778-0668 ELKO, NV 89801 FAX: (775) 778-0687

DATE: February 2007
DRAWN BY: ems