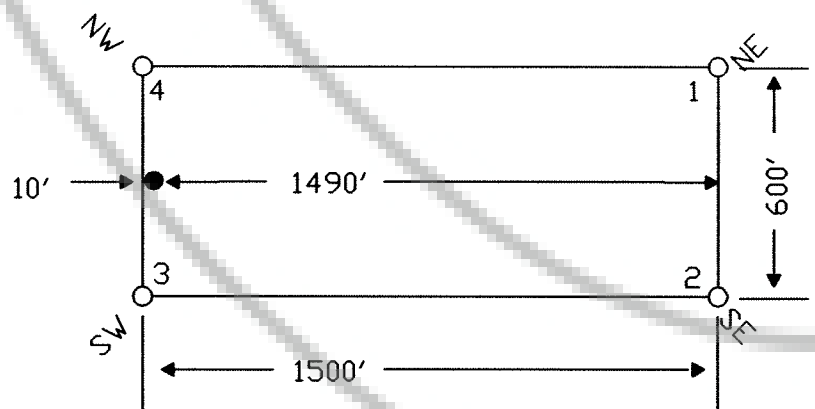
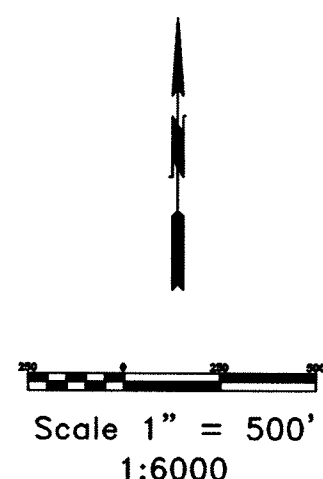
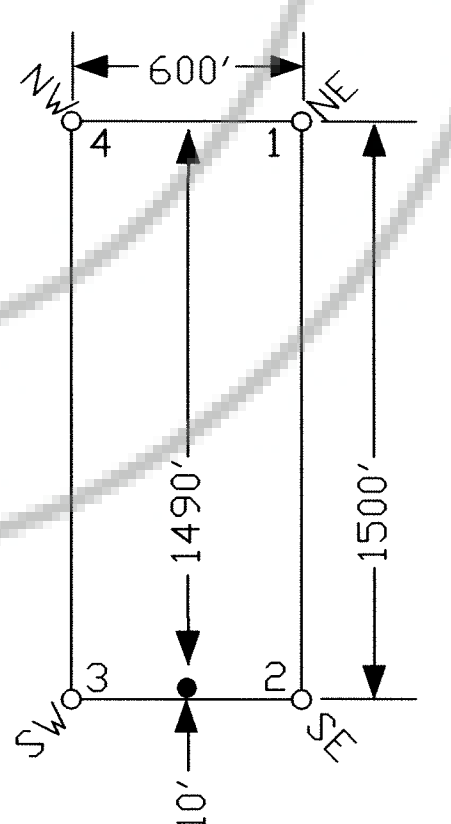


TIE POINT DATA:
 THE SOUTHWEST CORNER OF WTC 1 LIES APPROXIMATELY
 590 FEET EAST AND 12,971 FEET SOUTH OF THE SOUTHWEST CORNER
 OF SECTION 14, T.26N., R.52E., M.D.B.M.

TYPICAL CLAIM



TYPICAL CLAIM



DOC # 0208019
 Official Record
 Eureka County - NV
 Mike Rebaletti - Recorder
 Fee \$1,324.00
 Book - Page - 0000

LOCATION DATES:
 November 17, 2006 - WTC 1-20,68-79,86-88
 November 18, 2006 - WTC 21-42,46-61
 November 19, 2006 - WTC 43-45,62-67,80-85

NOTES:
 LOCATION MONUMENTS SET 10' FROM CLAIM END
 CENTERLINES. ALL LOCATION MONUMENTS AND CLAIM
 POSTS ARE 2"x2"x4' WOODEN STAKES.

DASHED SECTION LINES INDICATE PROJECTED SECTIONS.

| | | |
|---|---|--|
| | Locator: Golden Gryphon USA Inc. 1400 Tanager place RR21, Roberts Creek, BC V0N 2W1 WTC 1-88 Lode Claims T.26N.,R52E; Eureka County, Nevada | |
| | DATE: February 2007 | ACAD FILE NAME: Sheet(01)gryphon(01)wct(1)068.dwg PLOT SCALE: 1"=500' |
| 369 - 5th STREET PH: (775) 778-0668 ELKO, NV 89801 FAX: (775) 778-0687 | | SHEET 2 OF 2 |