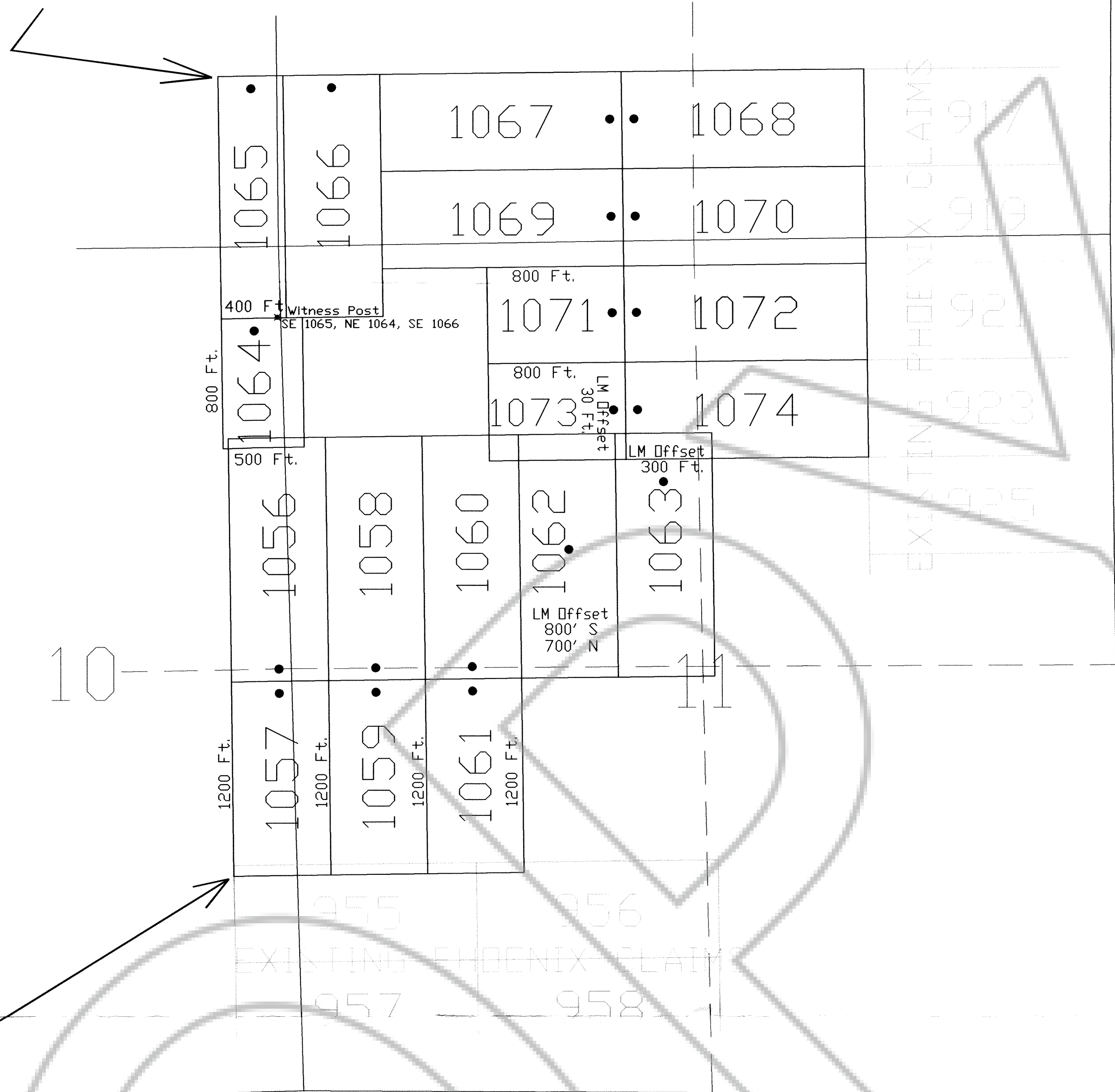


TIE POINT DATA:
 THE NORTHWEST CORNER OF PHOENIX 1065 LIES APPROXIMATELY
 370 FEET WEST AND 1,050 FEET NORTH OF THE NORTHWEST CORNER
 OF SECTION 11, T.27N., R.52E., M.D.B.M.



TIE POINT DATA:
 THE SOUTHWEST CORNER OF PHOENIX 1057 LIES APPROXIMATELY
 285 FEET WEST AND 3,890 FEET SOUTH OF THE NORTHWEST CORNER
 OF SECTION 11, T.27N., R.52E., M.D.B.M.

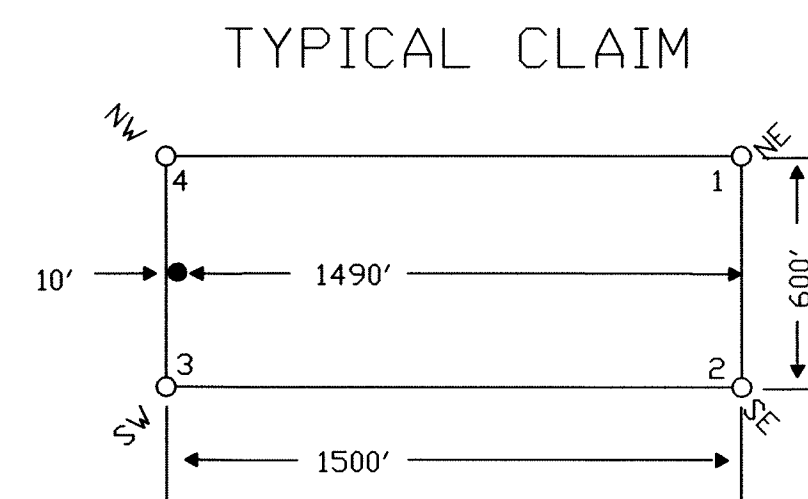
Phoenix Lode Claims Witness Post Locations

Witness posts were used due to treacherous terrain and snow conditions. It was impractical and dangerous to continue. Posts are properly marked to designate their right place (NRS 517.030).

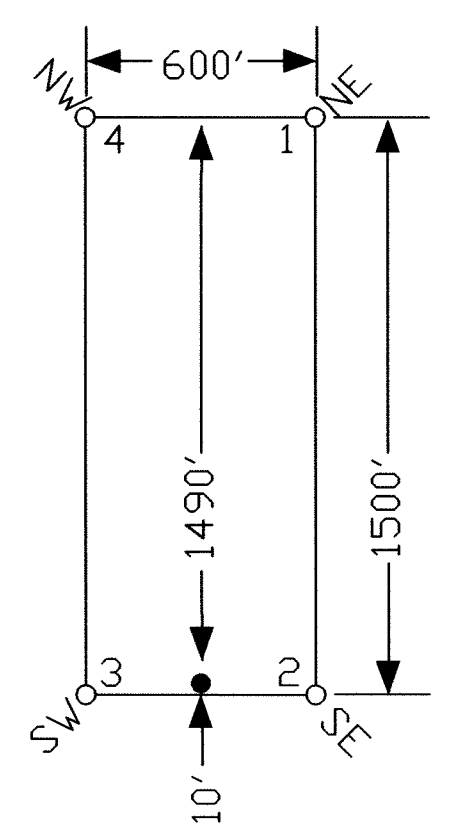
Witness posts for the following corners are located at the following distances from their true positions:

Approximate Distance in Feet

Corner Post	East/West	North/South
SE1065 Corner 2	50 West	0 North
NE1064 Corner 1	150 West	0 North
SE1066 Corner 2	650 West	0 North



TYPICAL CLAIM



NOTES:
 LOCATION MONUMENTS SET 10' FROM CLAIM END CENTERLINES
 UNLESS NOTED ON MAP. ALL LOCATION MONUMENTS AND CLAIM
 POSTS ARE 2"x2"x4' WOODEN STAKES.

DASHED SECTION LINES INDICATE PROJECTED SECTIONS.

LOCATION DATES:
 December 19, 2006 - Phoenix 1056-1074
 (19 Total Claims)

DOC # 0208222
 Official Record
 Eureka County - NV
 Mike Rebeleati - Recorder
 Fee: \$209.00
 Book- Page- 0000

Golden Gryphon USA Inc.
 1400 Tanger place RR21, Roberts Creek, BC V0N 2W1
 Phoenix 1056-1074 Lode Claims
 T.27N.,R52E; Eureka County, Nevada

369 - 5th STREET
 PH: (775) 778-0668 ELKO, NV 89801 FAX: (775) 778-0687

DATE: February 2007
 SCALE: 1"=500'