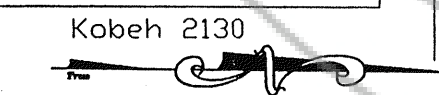
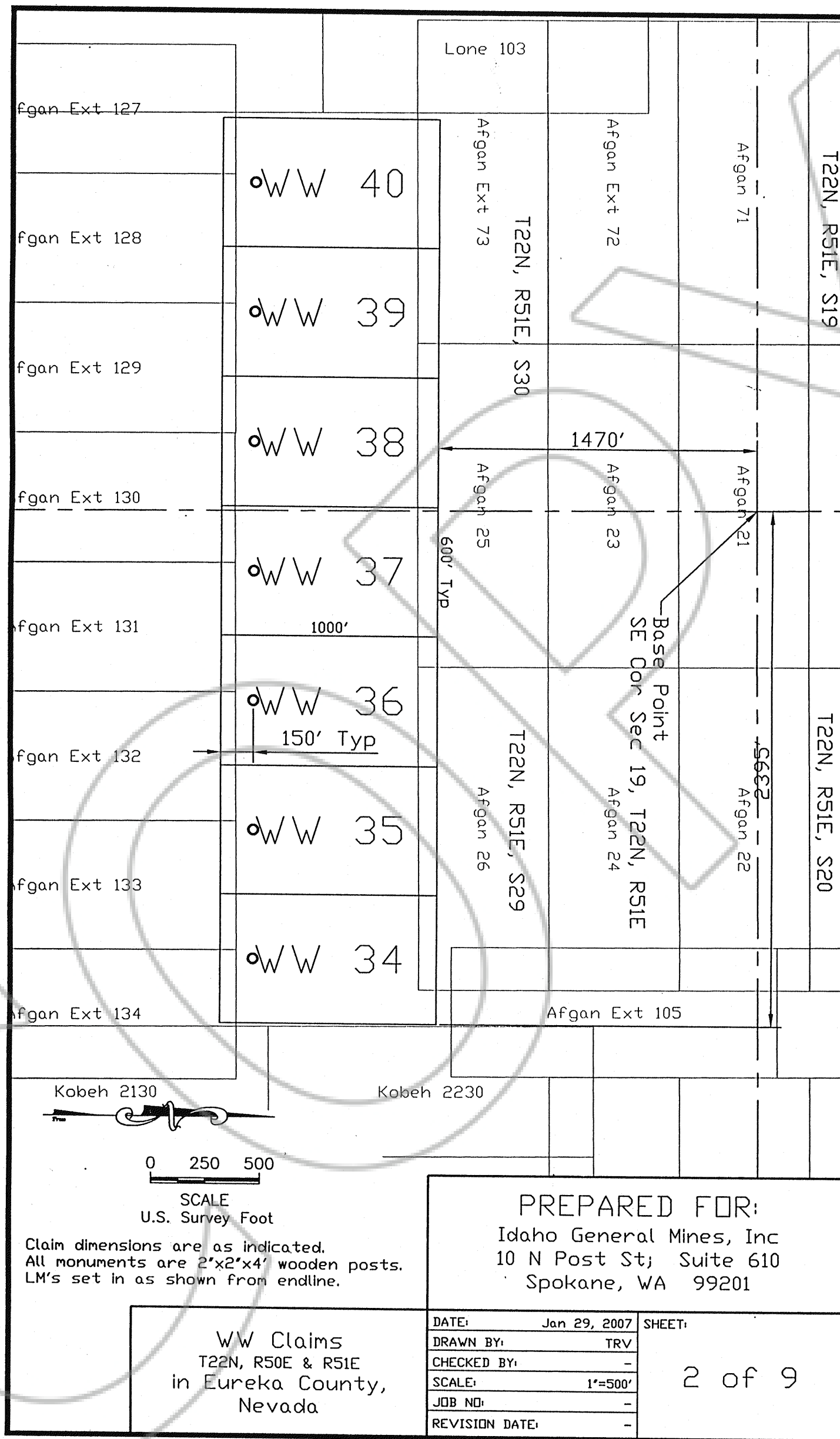


Claim dimensions are as indicated.  
 All monuments are 2"x2"x4' wooden posts.  
 LM's set in as shown from endline.

PREPARED FOR:  
 Idaho General Mines, Inc  
 10 N Post St; Suite 610  
 Spokane, WA 99201

WW Claims  
 T22N, R50E & R51E  
 in Eureka County,  
 Nevada

DATE:	Jan 29, 2007	SHEET:
DRAWN BY:	TRV	
CHECKED BY:	-	
SCALE:	1"=500'	1 of 9
JOB NO:	-	
REVISION DATE:	-	



0 250 500

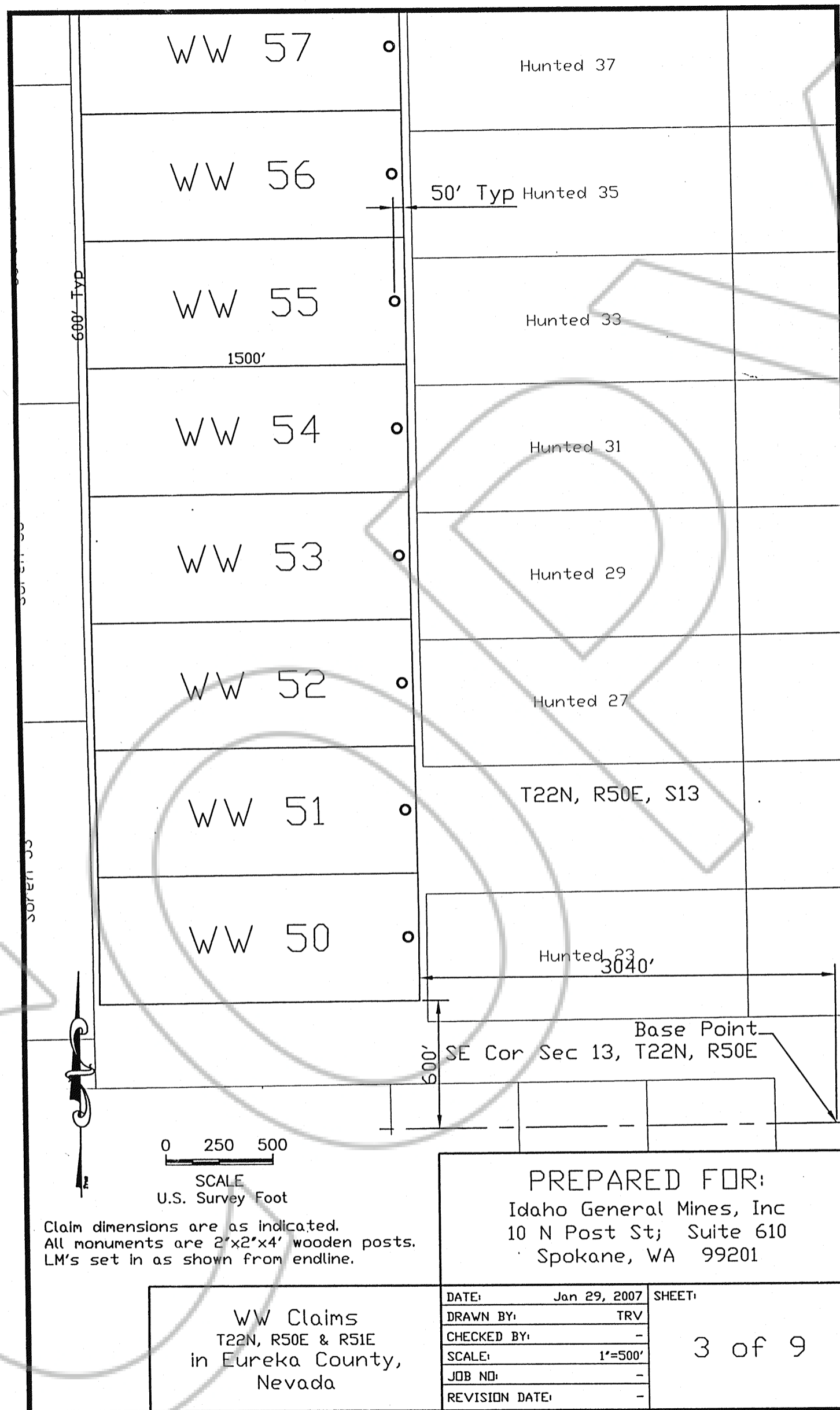
SCALE  
U.S. Survey Foot

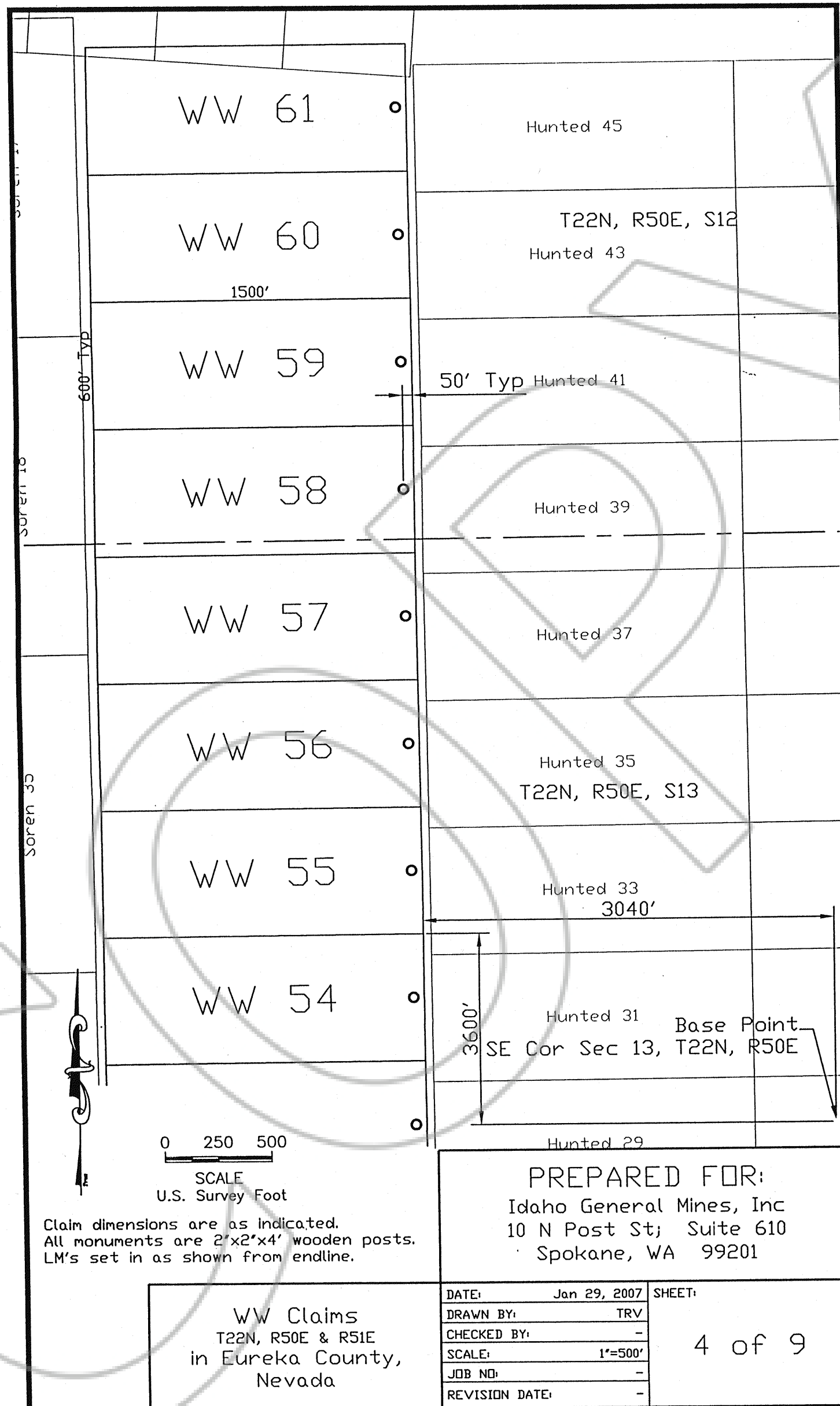
Claim dimensions are as indicated.  
All monuments are 2"x2"x4" wooden posts.  
LM's set in as shown from endline.

PREPARED FOR:  
Idaho General Mines, Inc  
10 N Post St; Suite 610  
Spokane, WA 99201

WW Claims  
T22N, R50E & R51E  
in Eureka County,  
Nevada

DATE:	Jan 29, 2007	SHEET:	2 of 9
DRAWN BY:	TRV		
CHECKED BY:	-		
SCALE:	1"=500'		
REVISION DATE:	-		



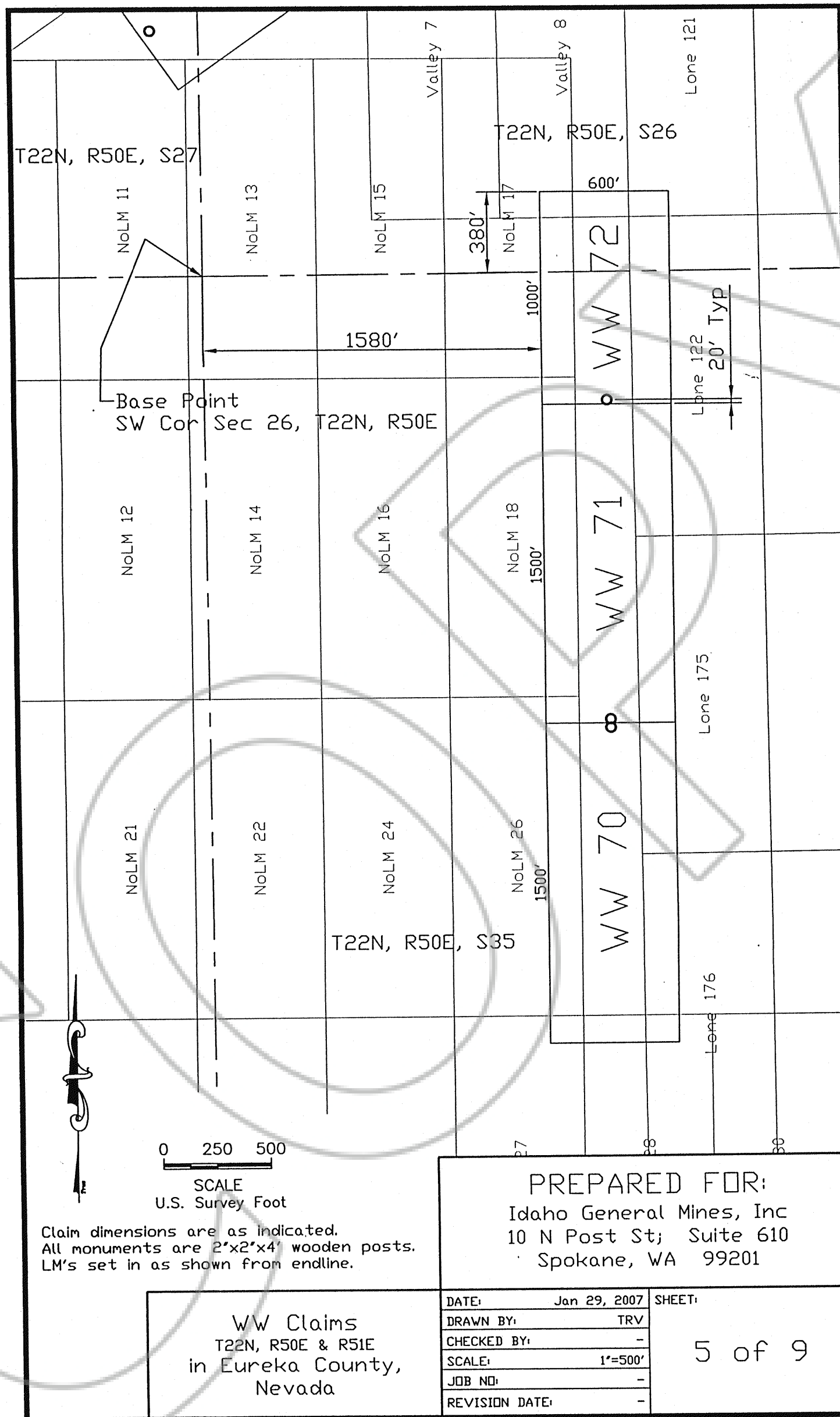


Claim dimensions are as indicated.  
 All monuments are 2"x2"x4" wooden posts.  
 LM's set in as shown from endline.

0 250 500  
 SCALE  
 U.S. Survey Foot

PREPARED FOR:  
 Idaho General Mines, Inc  
 10 N Post St; Suite 610  
 Spokane, WA 99201

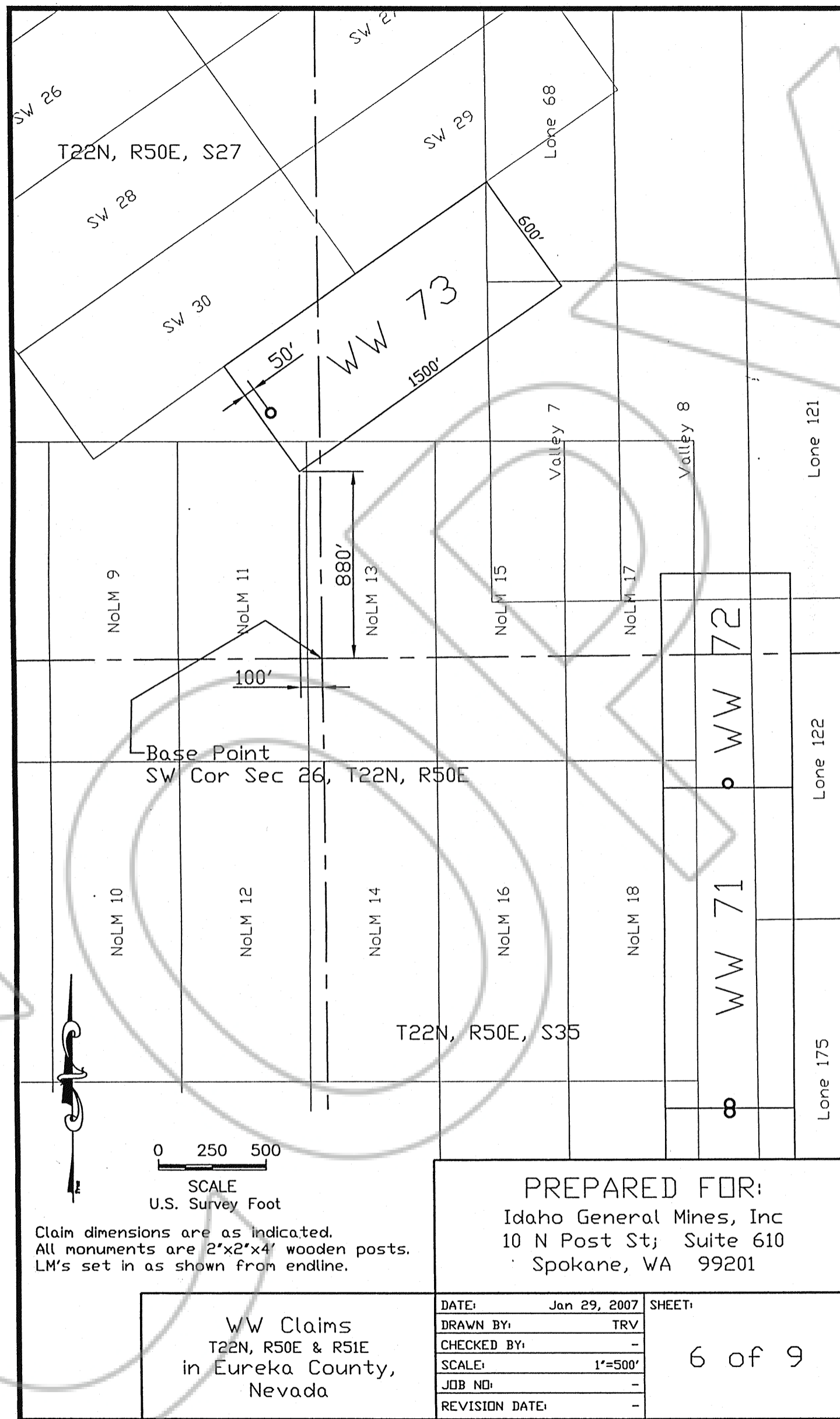
WW Claims T22N, R50E & R51E in Eureka County, Nevada	DATE:	Jan 29, 2007	SHEET:
	DRAWN BY:	TRV	4 of 9
	CHECKED BY:	-	
	SCALE:	1"=500'	
	JOB NO:	-	
REVISION DATE:	-		



Claim dimensions are as indicated.  
 All monuments are 2"x2"x4" wooden posts.  
 LM's set in as shown from endline.

PREPARED FOR:  
 Idaho General Mines, Inc  
 10 N Post St; Suite 610  
 Spokane, WA 99201

WW Claims T22N, R50E & R51E in Eureka County, Nevada	DATE:	Jan 29, 2007	SHEET:
	DRAWN BY:	TRV	5 of 9
	CHECKED BY:	-	
	SCALE:	1"=500'	
	JOB NO:	-	
REVISION DATE:	-		

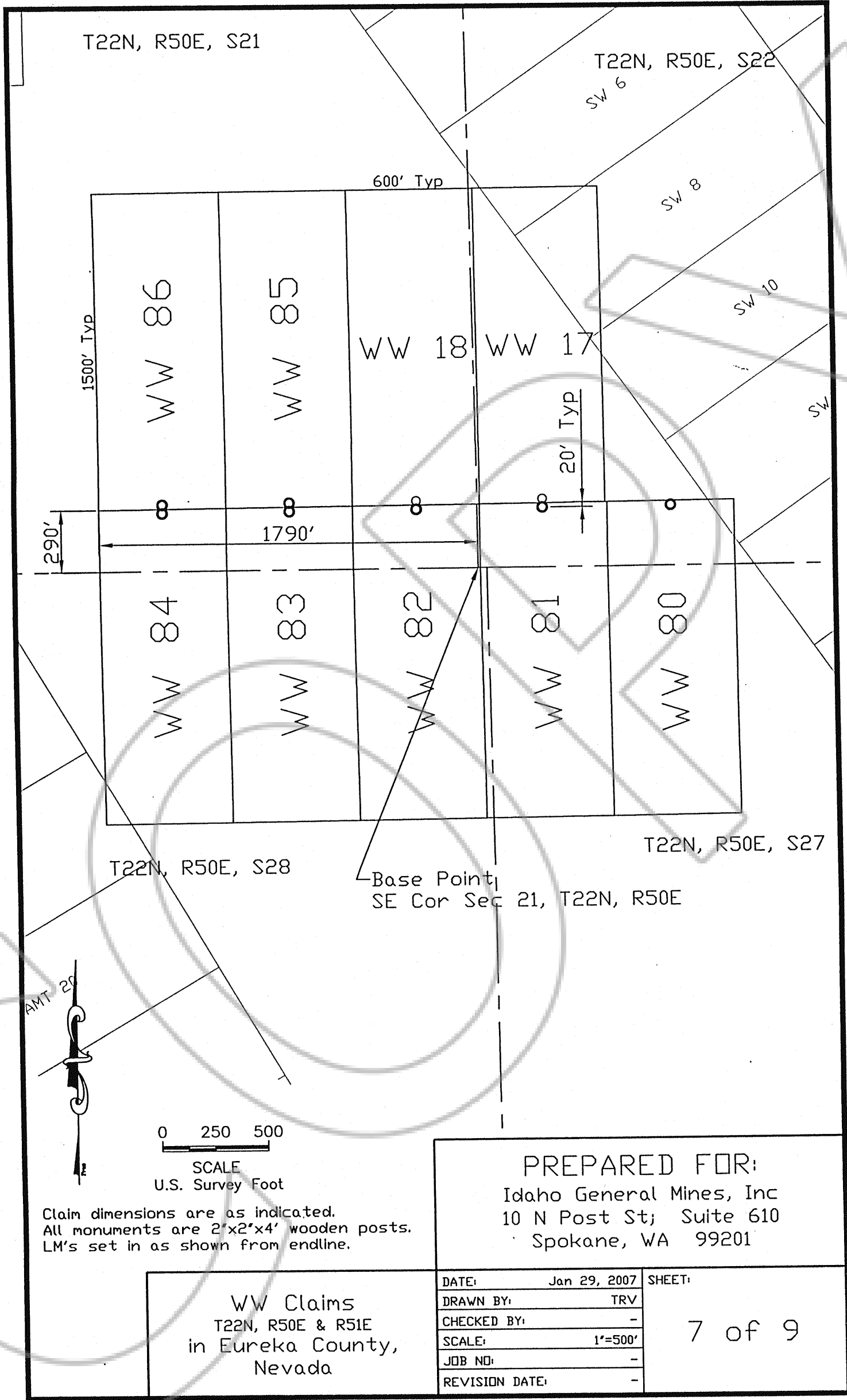


Claim dimensions are as indicated.  
 All monuments are 2"x2"x4' wooden posts.  
 LM's set in as shown from endline.

PREPARED FOR:  
 Idaho General Mines, Inc  
 10 N Post St; Suite 610  
 Spokane, WA 99201

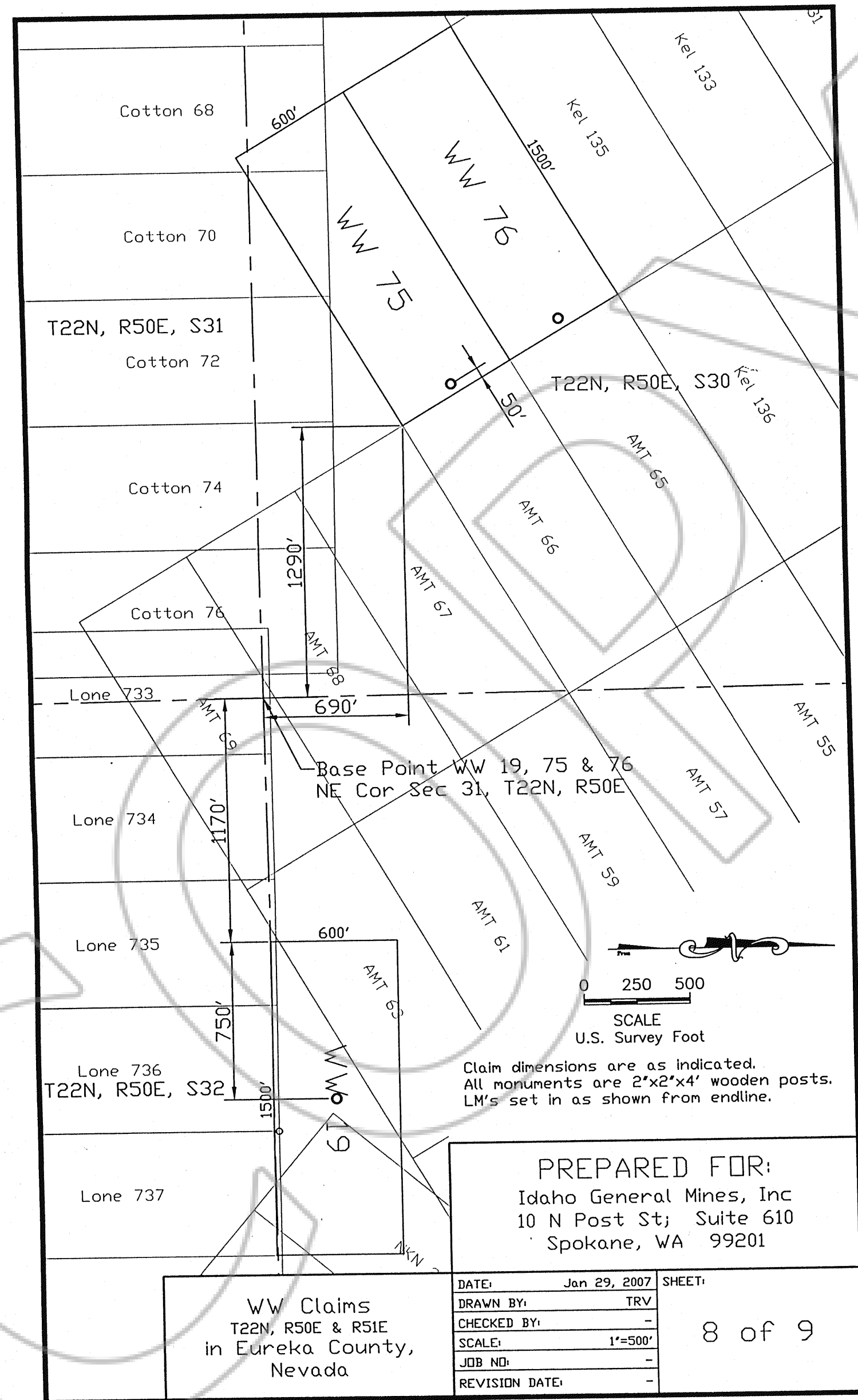
WW Claims  
 T22N, R50E & R51E  
 in Eureka County,  
 Nevada

DATE:	Jan 29, 2007	SHEET:
DRAWN BY:	TRV	6 of 9
CHECKED BY:	-	
SCALE:	1"=500'	
JOB NO:	-	
REVISION DATE:	-	



PREPARED FOR:  
Idaho General Mines, Inc  
10 N Post St; Suite 610  
Spokane, WA 99201

WW Claims T22N, R50E & R51E in Eureka County, Nevada	DATE:	Jan 29, 2007	SHEET:
	DRAWN BY:	TRV	7 of 9
	CHECKED BY:	-	
	SCALE:	1"=500'	
	JOB NO:	-	
REVISION DATE:	-		



Claim dimensions are as indicated.  
 All monuments are 2"x2"x4' wooden posts.  
 LM's set in as shown from endline.

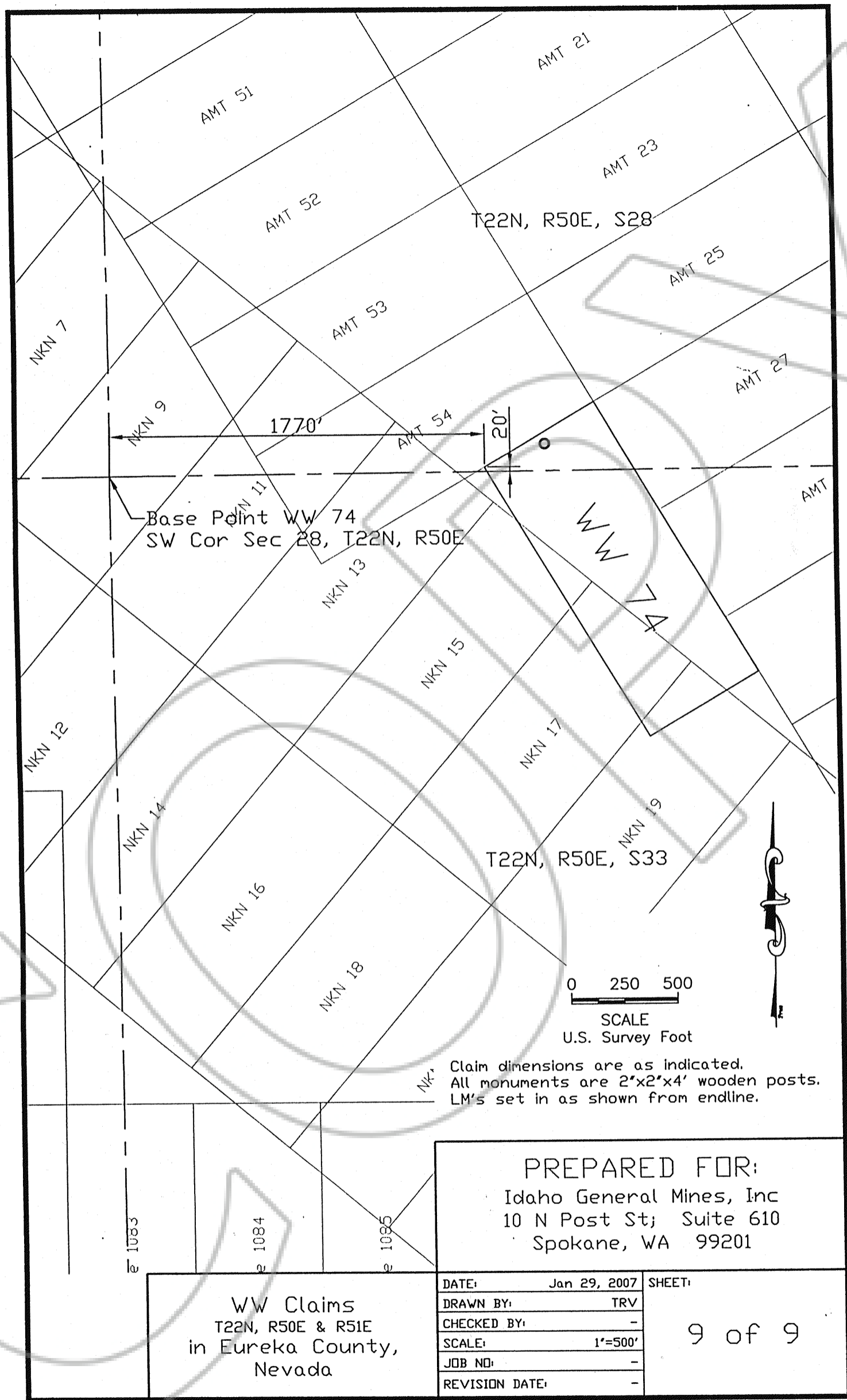
PREPARED FOR:  
 Idaho General Mines, Inc  
 10 N Post St; Suite 610  
 Spokane, WA 99201

WW Claims  
 T22N, R50E & R51E  
 in Eureka County,  
 Nevada

DATE:	Jan 29, 2007	SHEET:
DRAWN BY:	TRV	
CHECKED BY:	-	
SCALE:	1"=500'	
JOB NO:	-	
REVISION DATE:	-	

8 of 9





PREPARED FOR:  
Idaho General Mines, Inc  
10 N Post St; Suite 610  
Spokane, WA 99201

WW Claims T22N, R50E & R51E in Eureka County, Nevada	DATE:	Jan 29, 2007	SHEET:
	DRAWN BY:	TRV	9 of 9
	CHECKED BY:	-	
	SCALE:	1"=500'	
	JOB NO:	-	
REVISION DATE:	-		

COPY

DOC # 0208283

03/21/2007 1:42 PM  
Official Record  
Recording requested By  
IDAHO GENERAL MINES INC  
Eureka County - NV  
Mike Rebaleati - Recorder  
Fee: \$679.00 Page 1 of 9  
RPTT: Recorded By: LLH  
Book- Page- 0000

