

NOTES
 Section lines are approximate.
 1/4 Section lines are approximate.
 Source, Nevada BLM GCSB
 Basis of Bearings NAD27 NV SP East Zone

- LEGEND**
- Location Monument
1.5"x 1.5"x 4' long wood post
 - Claim Corner
1.5"x 1.5"x 4' long wood post
 - ◆ Found SECTION CORNER
GLO Brass Cap 1922 on iron pipe

LOCATION DATES

PC 1 - 22:	Jan. 23, 2007
PC 23 - 29:	Jan. 24, 2007
PC 30 - 71:	Jan. 13, 2007
PC 72 - 107:	Jan. 14, 2007
PC 108 - 119:	Jan. 15, 2007
PC 120 - 123:	Jan. 24, 2007
PC 124 - 132:	Jan. 25, 2007

LOCATOR: BARRICK GOLD U.S. INC.
 ADDRESS: 136 E. SOUTH TEMPLE, SUITE 1300
 SALT LAKE CITY, UT 84111

DOC # 0208451

Official Record

Recording requested by
 BARRICK GOLD U.S. INC.

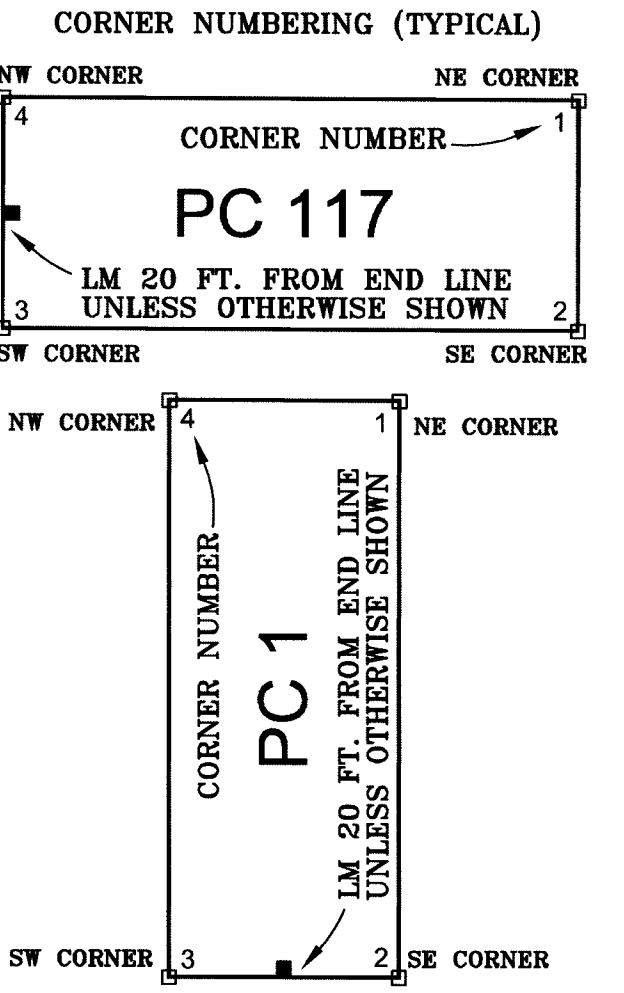
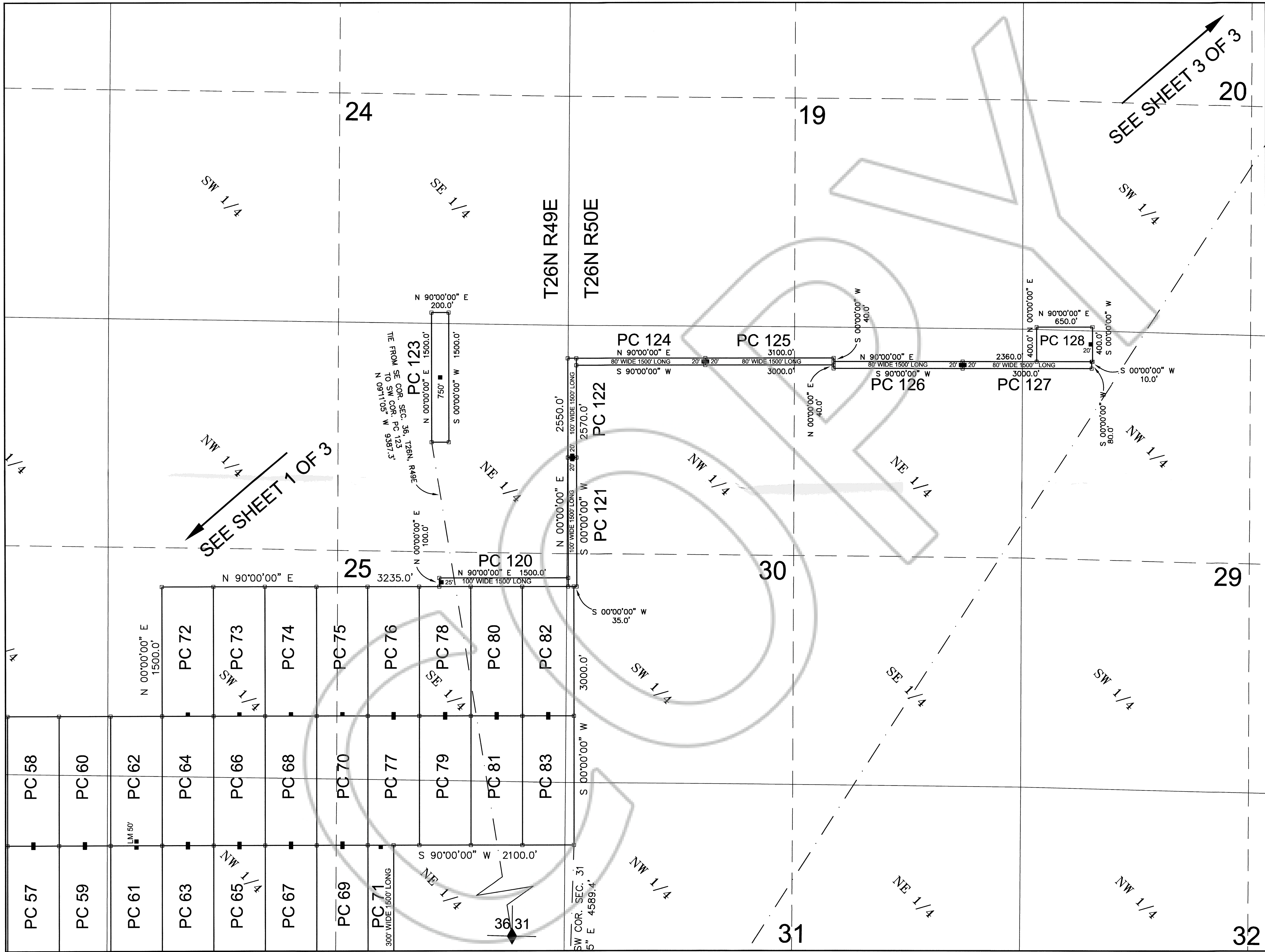
Eureka County - NV
 Mike Rebaletti - Recorder

Fee: \$1,980.00 Page 1 of 1
 2011 Book- Page- 0000 Recorded By- FES

0208451

MAP OF LODGE CLAIMS
 PC 1 THROUGH PC 132 WITHIN
 SECTIONS 2 AND 3, T25N, R49E
 SECTIONS 24, 25, 26, 27, 34,
 35 AND 36 T26N, R49E
 SECTIONS 15, 16, 17, 20, 21, 22,
 29, 30 AND 31, T26N, R50E, MDM
 EUREKA COUNTY, NEVADA
 BARRICK GOLD U.S. INC.

SHEET 1 OF 3



NOTES
 Section lines are approximate.
 1/4 Section lines are approximate.
 Source, Nevada BLM GCDB
 Basis of Bearings NAD27 NV SP East Zone

- LEGEND**
- Location Monument
1.5"x 1.5"x 4' long wood post
 - Claim Corner
1.5"x 1.5"x 4' long wood post
 - ◆ Found SECTION CORNER
GLO Brass Cap 1922 on iron pipe

LOCATION DATES

PC 1 - 22:	Jan. 23, 2007
PC 23 - 29:	Jan. 24, 2007
PC 30 - 71:	Jan. 13, 2007
PC 72 - 107:	Jan. 14, 2007
PC 108 - 119:	Jan. 15, 2007
PC 120 - 123:	Jan. 24, 2007
PC 124 - 132:	Jan. 25, 2007

LOCATOR: BARRICK GOLD U.S. INC.
ADDRESS: 136 E. SOUTH TEMPLE, SUITE 1300
 SALT LAKE CITY, UT 84111

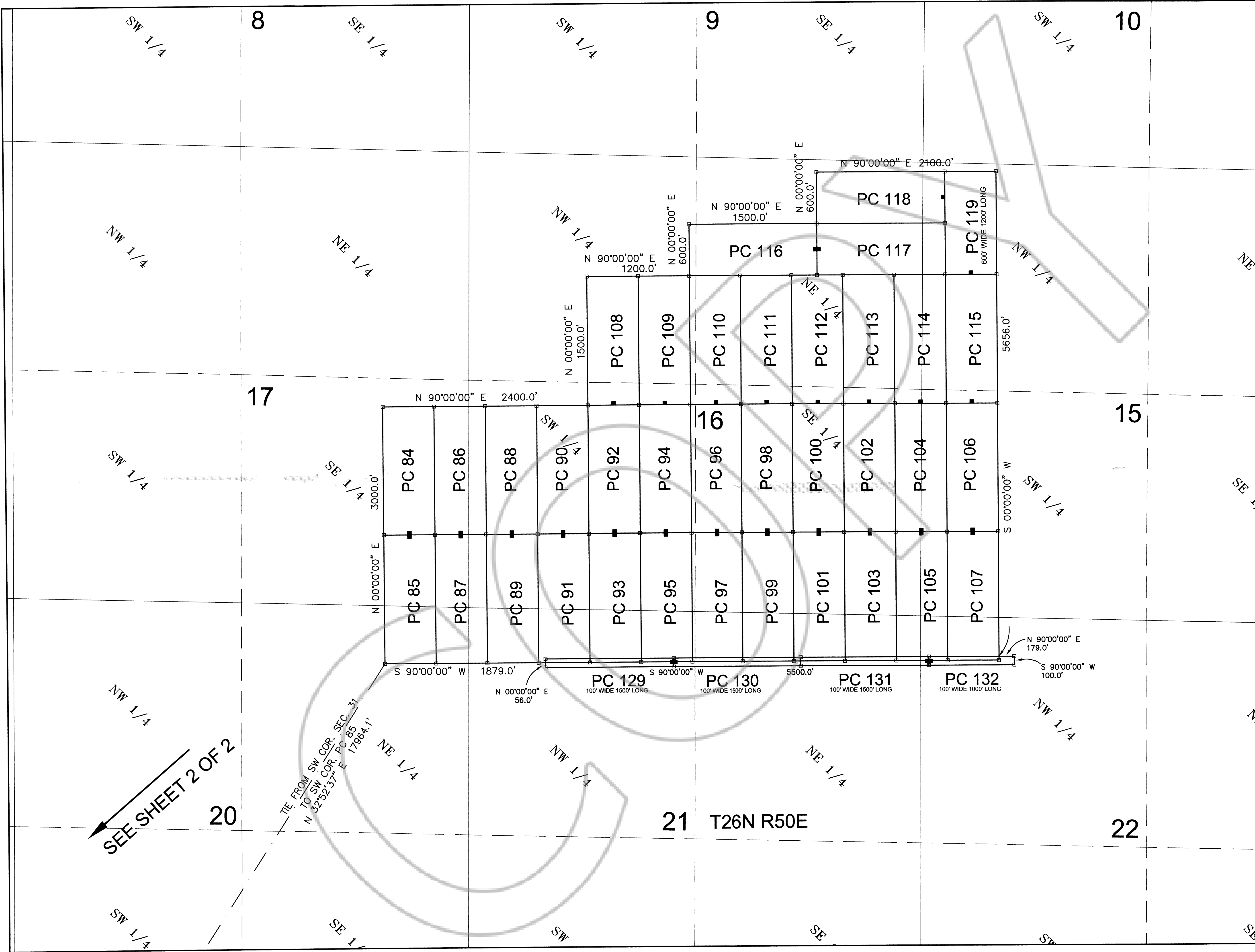
DOC # 0208451

Official Record
 Recording requested by
 BARRICK GOLD U.S. INC.
 Eureka County - NV
 Mike Rebealeti - Recorder
 Fee \$1,980.00
 Book- Page- 0000

0208451

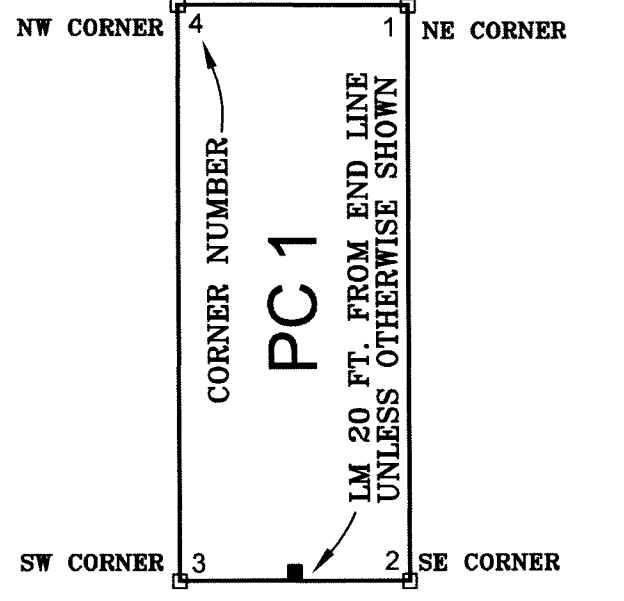
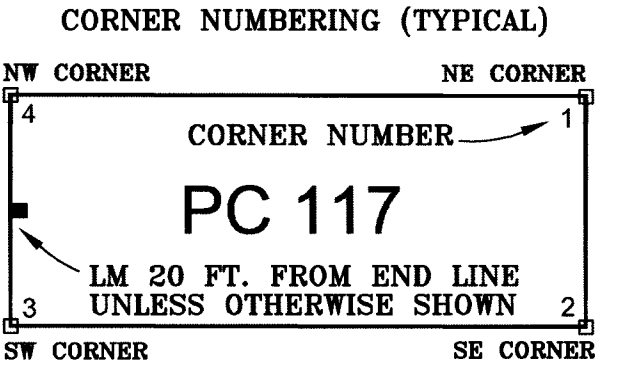
0 500 1000 1500
 SCALE 1" = 500'

MAP OF LODGE CLAIMS
 PC 1 THROUGH PC 132 WITHIN
 SECTIONS 2 AND 3, T25N, R49E
 SECTIONS 24, 25, 26, 27, 34,
 35 AND 36 T26N, R49E
 SECTIONS 15, 16, 17, 20, 21, 22,
 29, 30 AND 31, T26N, R50E, MDM
 EUREKA COUNTY, NEVADA
 BARRICK GOLD U.S. INC.



SEE SHEET 2 OF 2

TIE FROM SW COR. SEC. 31
TO SW COR. PC 85
N 32°52'37" E 1786.41'



NOTES
 Section lines are approximate.
 1/4 Section lines are approximate.
 Source, Nevada BLM GCDB
 Basis of Bearings NAD27 NV SP East Zone

- LEGEND**
- Location Monument
1.5"x 1.5"x 4' long wood post
 - Claim Corner
1.5"x 1.5"x 4' long wood post
 - ◆ Found SECTION CORNER
G10 Brass Cap 1922 on iron pipe

LOCATION DATES

PC 1 - 22:	Jan. 23, 2007
PC 23 - 29:	Jan. 24, 2007
PC 30 - 71:	Jan. 13, 2007
PC 72 - 107:	Jan. 14, 2007
PC 108 - 119:	Jan. 15, 2007
PC 120 - 123:	Jan. 24, 2007
PC 124 - 132:	Jan. 25, 2007

LOCATOR: BARRICK GOLD U.S. INC.
 ADDRESS: 136 E. SOUTH TEMPLE, SUITE 1300
 SALT LAKE CITY, UT 84111

DOC # 0208451

Official Record

Eureka County - NV

Mike Reblestl - Recorder

Fee \$1,950.00 Page 1 of 1

Recorded By: FES

Book - Page - 6000

0208451

SCALE 1" = 500'

MAP OF LODE CLAIMS
 PC 1 THROUGH PC 132 WITHIN
 SECTIONS 2 AND 3, T25N, R49E
 SECTIONS 24, 25, 26, 27, 34,
 35 AND 36 T26N, R49E
 SECTIONS 15, 16, 17, 20, 21, 22,
 29, 30 AND 31, T26N, R50E, MDM
 EUREKA COUNTY, NEVADA
 BARRICK GOLD U.S. INC.