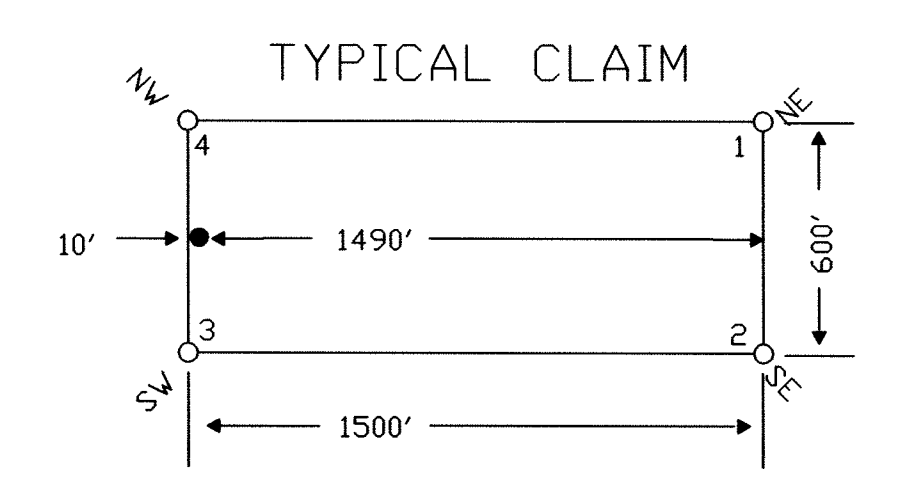
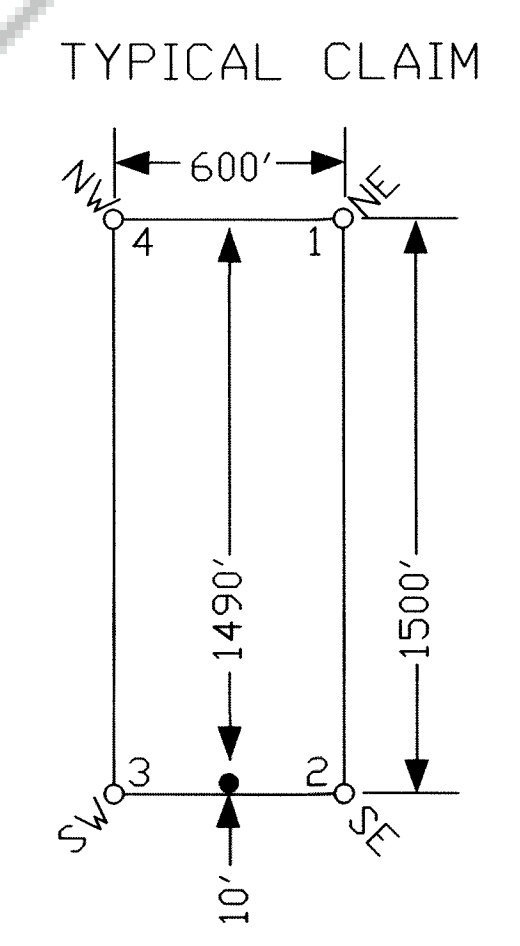


TIE POINT DATA:
 THE SOUTHWEST CORNER OF LM20 25 LIES APPROXIMATELY
 5,113 FEET EAST AND 338 FEET SOUTH OF THE SOUTHWEST
 CORNER OF SECTION 19, T.29N., R.50E., M.D.B.M.



NOTES:
 LOCATION MONUMENTS SET 10' FROM CLAIM END
 CENTERLINES. ALL LOCATION MONUMENTS AND CLAIM
 POSTS ARE 2"x2"x4' WOODEN STAKES.
 DASHED SECTION LINES INDICATE PROJECTED SECTION.

LOCATION DATES:
 January 26, 2007 - LM20 1-10,19-30
 January 27, 2007 - LM20 11-18
 April 20, 2007 - LM20 31-34
 (34 Total Claims)

DOC # 0209189

04/30/2007 02:24 PM
Official Record
 Recording Requested By
 PALISADE VENTURES
 Eureka County - NV
 Mike Rebaletti - Recorder
 Fee: \$514.00 Page 1 of 1
 Book- Page- 0000



Locator:
Palisade Ventures
 109 Fir Street, Elko, Nevada 89801
 LM20 1-34 Lode Claims
 T.29N.,R.50E; Eureka County, Nevada

DATE: April 2007
 ACAD FILE NAME: d:\m20\0209189\m20.dwg
 PLOT SCALE: 1" = 500'
 DRAWN BY: sms