

TIE POINT DATA:
THE NORTHWEST CORNER OF JN18 14 LIES APPROXIMATELY
8,474 FEET EAST AND 9,077 FEET NORTH OF THE NORTHWEST
CORNER OF SECTION 24, T.31N., R.50E., M.D.B.M.

8

R.50E.
R.51E.

11

14

23

26

1

13

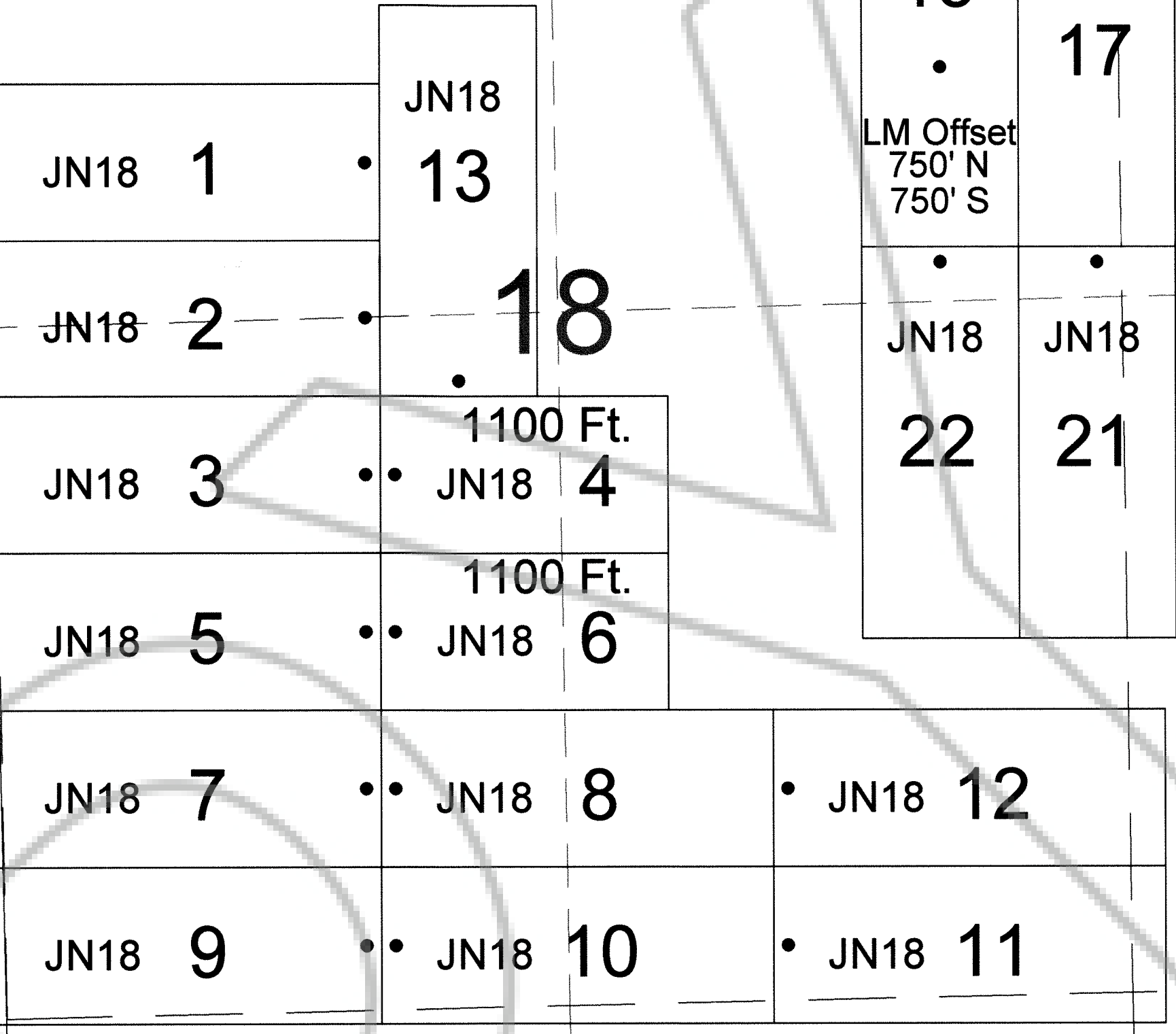
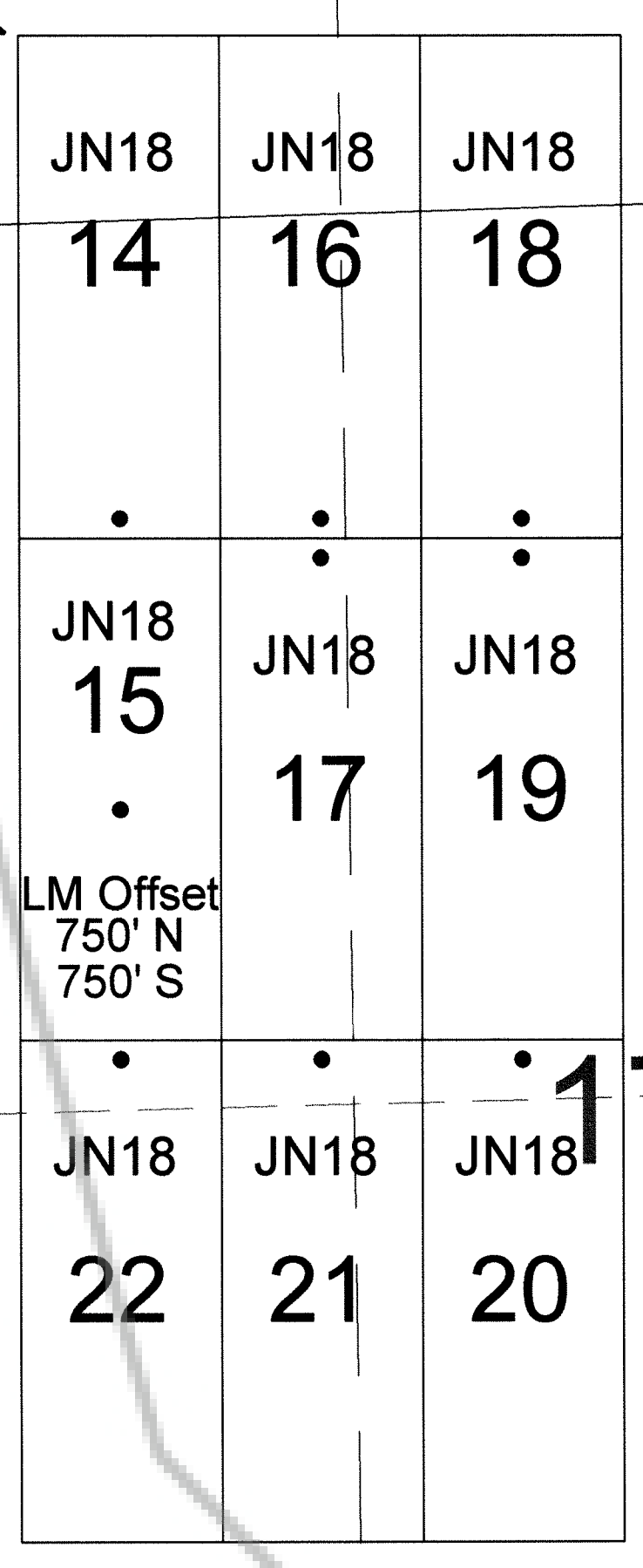
25

7

19

19

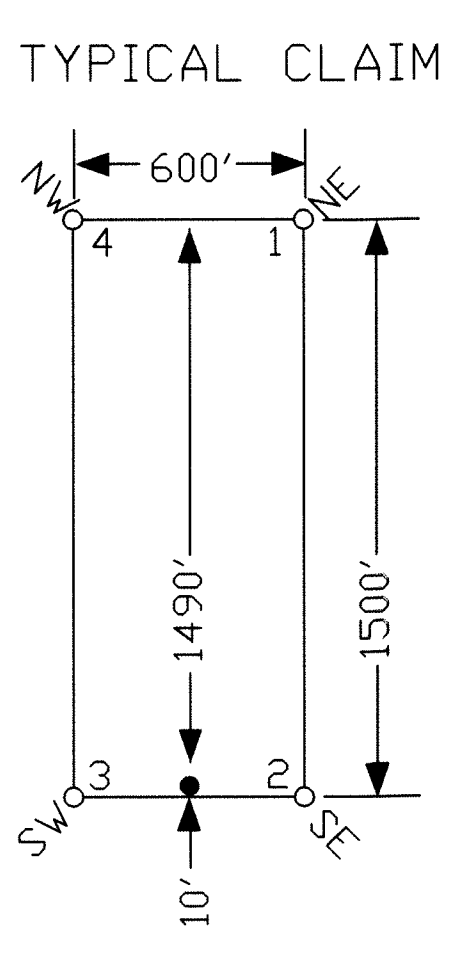
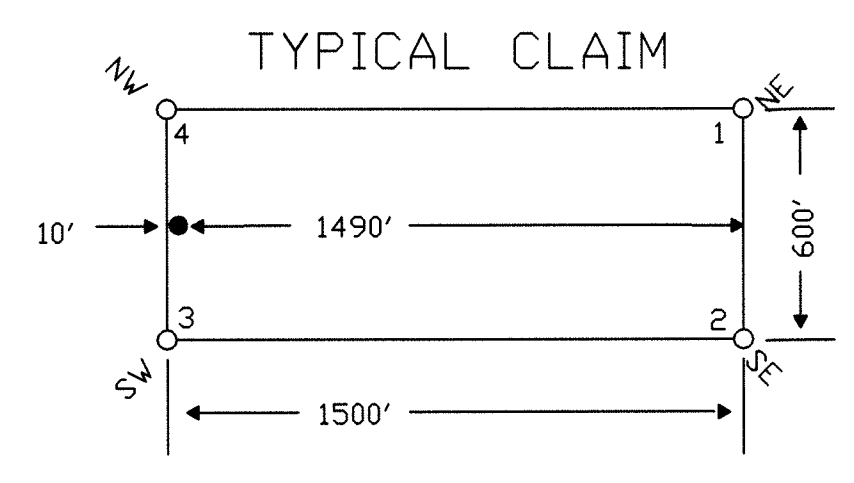
30



TIE POINT DATA:
THE SOUTHWEST CORNER OF JN18 9 LIES APPROXIMATELY
5,131 FEET EAST AND 3,103 FEET NORTH OF THE NORTHWEST
CORNER OF SECTION 24, T.31N., R.50E., M.D.B.M.

TIE POINT DATA:
THE SOUTHWEST CORNER OF JM12 2 LIES APPROXIMATELY
240 FEET WEST AND 5,213 FEET NORTH OF THE NORTHWEST
CORNER OF SECTION 24, T.31N., R.50E., M.D.B.M.

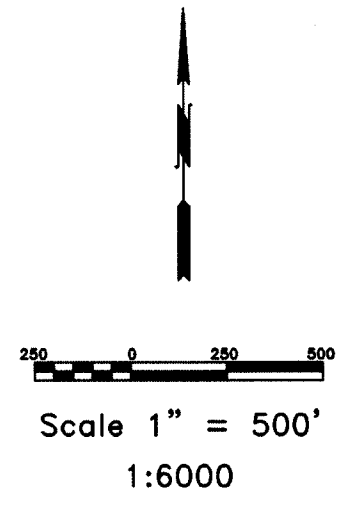
TIE POINT DATA:
THE NORTHWEST CORNER OF JM24 19 LIES APPROXIMATELY
81 FEET WEST AND 386 FEET NORTH OF THE NORTHWEST
CORNER OF SECTION 24, T.31N., R.50E., M.D.B.M.



JM12 Lode Claims Witness Post Locations.
Witness posts were used due to treacherous terrain
and an existing river. It was impractical and dangerous
to continue. Posts are properly marked to
designate their right place (NRS 517.030).

The following for the following corners are located
at the posts for the following corners are located:

Corner Post	Approximate Distance in Feet	
	East/West	North/South
SW 1 Corner 3	300 East	0 North
NW 2 Corner 4	300 West	0 North
SW 20 Corner 3	0 West	480 South
SW 21 Corner 3	0 West	400 North
NW 22 Corner 4	0 West	400 North
SE 19 Corner 1	0 West	400 North
SE 19 Corner 2	0 West	400 North
NW 1 Corner 4	3000 East	0 North
NE 1 Corner 1	2400 East	0 North
NW 3 Corner 4	2400 East	0 North
NE 3 Corner 1	1800 East	0 North
NW 5 Corner 3	1800 East	0 North
NE 5 Corner 1	1200 East	0 North
NW 7 Corner 3	1200 East	0 North
NE 7 Corner 1	600 East	0 North
NW 9 Corner 3	600 East	0 North
NE 23 Corner 1	0 West	400 South



LOCATION DATES:
February 8, 2007 - JM24 1-18
April 3, 2007 - JM24 19-34

February 27, 2007 - JN18 1-10
March 12, 2007 - JN18 11-22

March 12, 2007 - JM12 19-20
March 13, 2007 - JM12 1-18
March 15, 2007 - JM12 21-24

(80 Total Claims)

DOC # 0209356
Official Record
Eureka County - NV
Mike Rebaletti - Recorder
Fee: \$1,200.00
Book- Page-
0209356

Palisade Ventures
109 Fir Street, Elko, Nevada 89801
JM12 1-24, JM24 1-34, JN18 1-22 Lode Claims
T.31N., R.50,51E; Eureka County, Nevada

369 - 5th STREET
ELKO, NV 89801
PH: (775) 778-0668 FAX: (775) 778-0687

DATE: May 2007
DRAWN BY: sms

NOTES:
LOCATION MONUMENTS SET 10' FROM CLAIM END CENTERLINES
UNLESS NOTED ON MAP. ALL LOCATION MONUMENTS AND CLAIM
POSTS ARE 2"x2"x4" WOODEN STAKES.
DASHED SECTION LINES INDICATE PROJECTED SECTIONS.