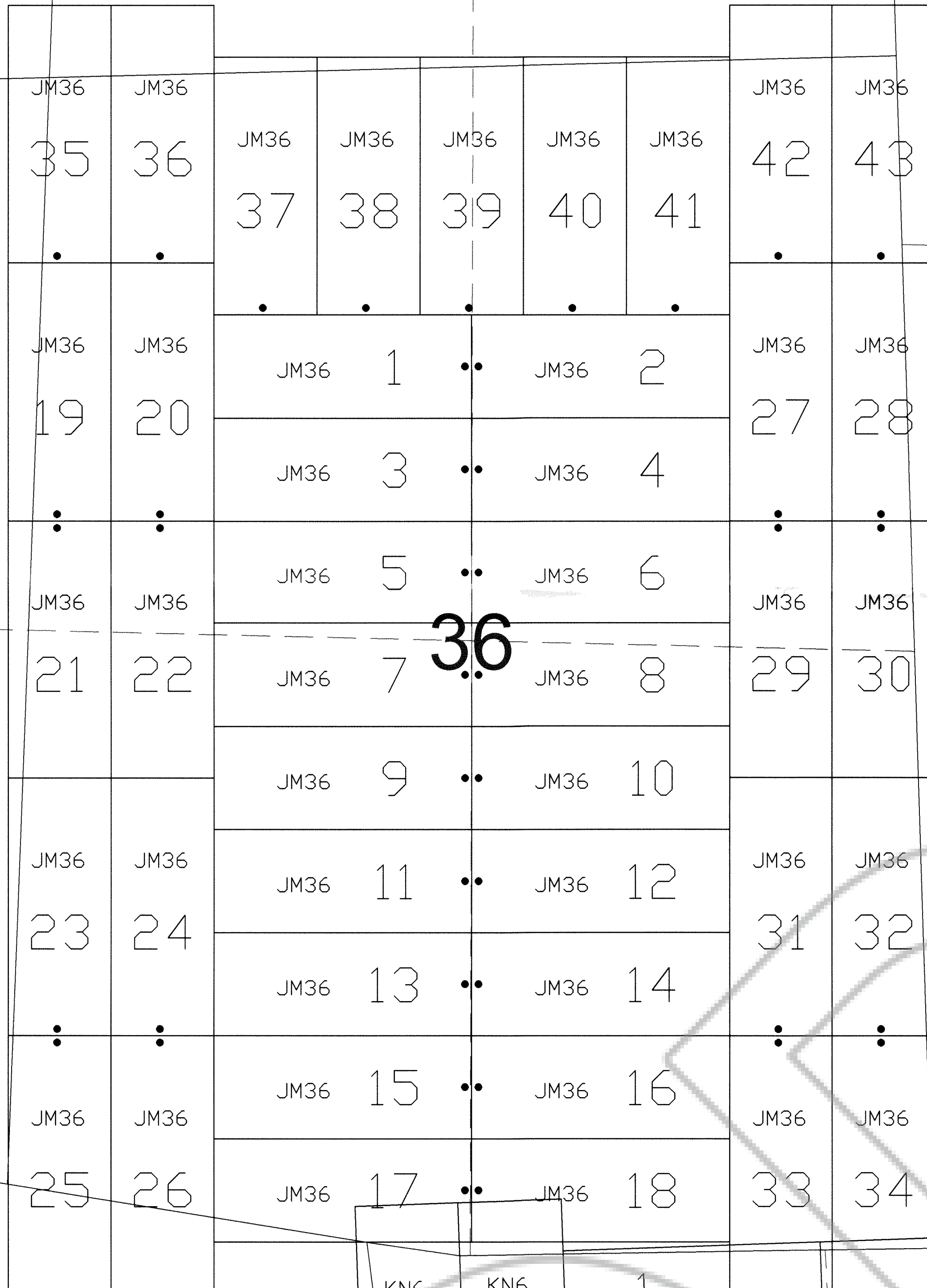
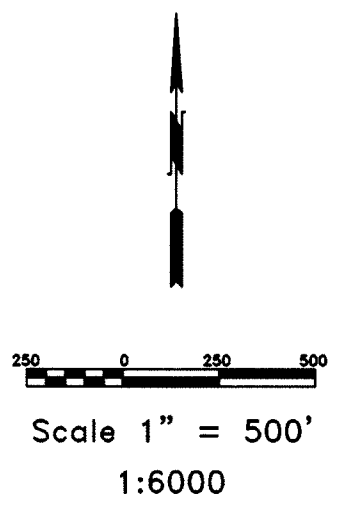


26

25

R.50E.
R.51E.



31

35

TIE POINT DATA:
THE SOUTHWEST CORNER OF JM36 25 LIES APPROXIMATELY 2,089 FEET WEST AND 299 FEET SOUTH OF THE NORTHWEST CORNER OF SECTION 6, T.30N., R.51E., M.D.B.M.

TIE POINT DATA:
THE NORTHWEST CORNER OF KN6 19 LIES APPROXIMATELY 69 FEET WEST AND 208 FEET NORTH OF THE NORTHWEST CORNER OF SECTION 6, T.30N., R.51E., M.D.B.M.

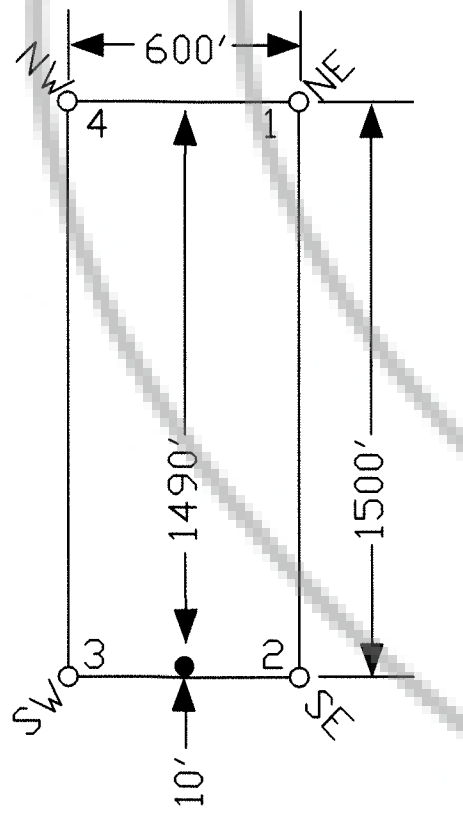
T.31N.
T.30N.

N2°W

N88°E

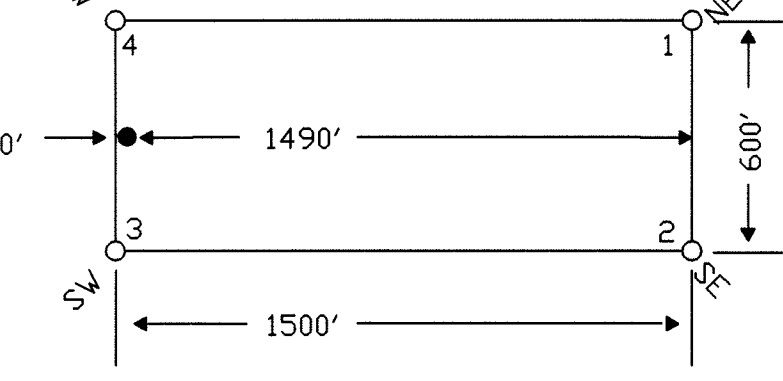
7

TYPICAL CLAIM



12

TYPICAL CLAIM



NOTES:
LOCATION MONUMENTS SET 10' FROM CLAIM END CENTERLINES UNLESS NOTED ON MAP. ALL LOCATION MONUMENTS AND CLAIM POSTS ARE 2"x2"x4' WOODEN STAKES.

DASHED SECTION LINES INDICATE PROJECTED SECTIONS.

LOCATION DATES:
February 13, 2007 - KN6 3-32,34 and JM36 1-43
March 19, 2007 - KN6 1,2,33

(77 Total Claims)

DOC # 0209447

Official Record
Eureka County - NV
Mike Rebealeti - Recorder
Fee: \$1,159.00
Book-- Page--



Locator:
Palisade Ventures
109 Fir Street, Elko, Nevada 89801
JM36 1-43 and KN6 1-34 Lode Claims
T.30,31N.,R.50,51E; Eureka County, Nevada