

Scale 1" = 500'
1:6000

TIE POINT DATA:
THE NORTHEAST CORNER OF PHOENIX 1054 LIES APPROXIMATELY
1,951 FEET WEST AND 544 FEET SOUTH OF THE NORTHEAST CORNER
OF SECTION 17, T.27N., R.53E., M.D.B.M.

Eureka County Elko County

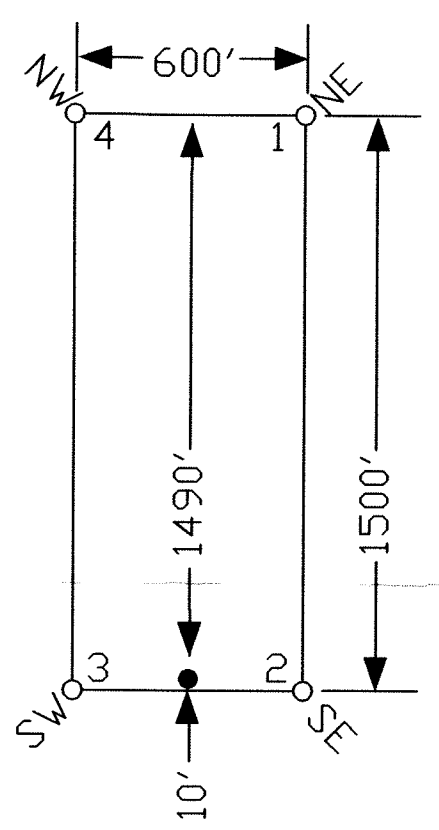
EXISTING PHOENIX CLAIMS

449	1038	1040	1042	1044	1046	1048	1050	1052	1054
451	•	•	•	•	•	•	•	•	•
453	1039	1041	1043	1045	1047	1049	1051	1053	1055
18									
457									

EXISTING PHOENIX CLAIMS

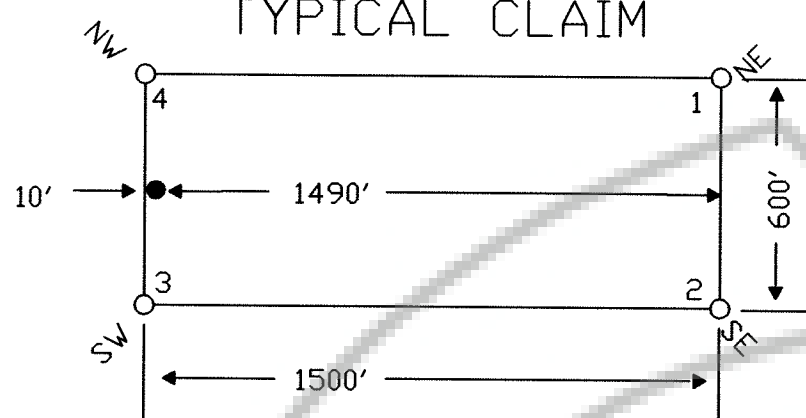
466	•	1021	1030	1032	1034	1036
467	•	1020	•	•	•	•
468	•	1019	1031	1033	1035	1037
469	•	1018	•	•	•	•
470	•	1017	1022	1024	1026	1028
471	•	1016	•	•	•	•
472	•	1015	1023	1025	1027	1029
473	•	1014	•	•	•	•
508	•	509	1023	1025	1027	1029
510	•	511	•	•	•	•

TYPICAL CLAIM



19

TYPICAL CLAIM



TIE POINT DATA:
THE NORTHWEST CORNER OF PHOENIX 1013 LIES APPROXIMATELY
3,436 FEET WEST AND 9,463 FEET SOUTH OF THE NORTHEAST CORNER
OF SECTION 17, T.27N., R.53E., M.D.B.M.

NOTES:
LOCATION MONUMENTS SET 10' FROM CLAIM END
CENTERLINES. ALL LOCATION MONUMENTS AND CLAIM
POSTS ARE 2"x2"x4" WOODEN STAKES.

DASHED SECTION LINES INDICATE PROJECTED SECTIONS.

EXISTING PHOENIX CLAIMS

512	•	1013	400 Ft.
513	•	1012	
514	•	1011	
515	•	1010	
516	•	1009	
517	•	518	

29

DOC # 0209835
05/25/2007 01:26 PM
Official Record
Recording furnished by
GOLDEN GRYPHON USA INC
Eureka County - NV
Mike Rebsieati - Recorder
Fee: \$319.00 Page 1 of 1
RPT: Recorded By: FES
Book- Page- 0000

LOCATION DATES:
February 24, 2007 - Phoenix 1009-1055

TO BE FILED IN EUREKA COUNTY: Phoenix 1009-1011,1014-1023,1038-1045 (21 Claims)
TO BE FILED IN ELKO COUNTY: Phoenix 1009-1013,1016-1037,1042,1044-1055 (40 Claims)

369 - 5th STREET
PH: (775) 778-0668 ELKO, NV 89801 FAX: (775) 778-0687

Locator: Golden Gryphon USA Inc.
1400 Tanager place RR21, Roberts Creek, BC V0N 2W1
Phoenix 1009-1055 Lode Claims
T.27N.,R53E; Eureka & Elko County, Nevada

DATE: May 2007
ACAD FILE NAME: c:\msh\07\gryphon\07\p0207.dwg
PLOT SCALE: 1"=500'
DRAWN BY: jrms