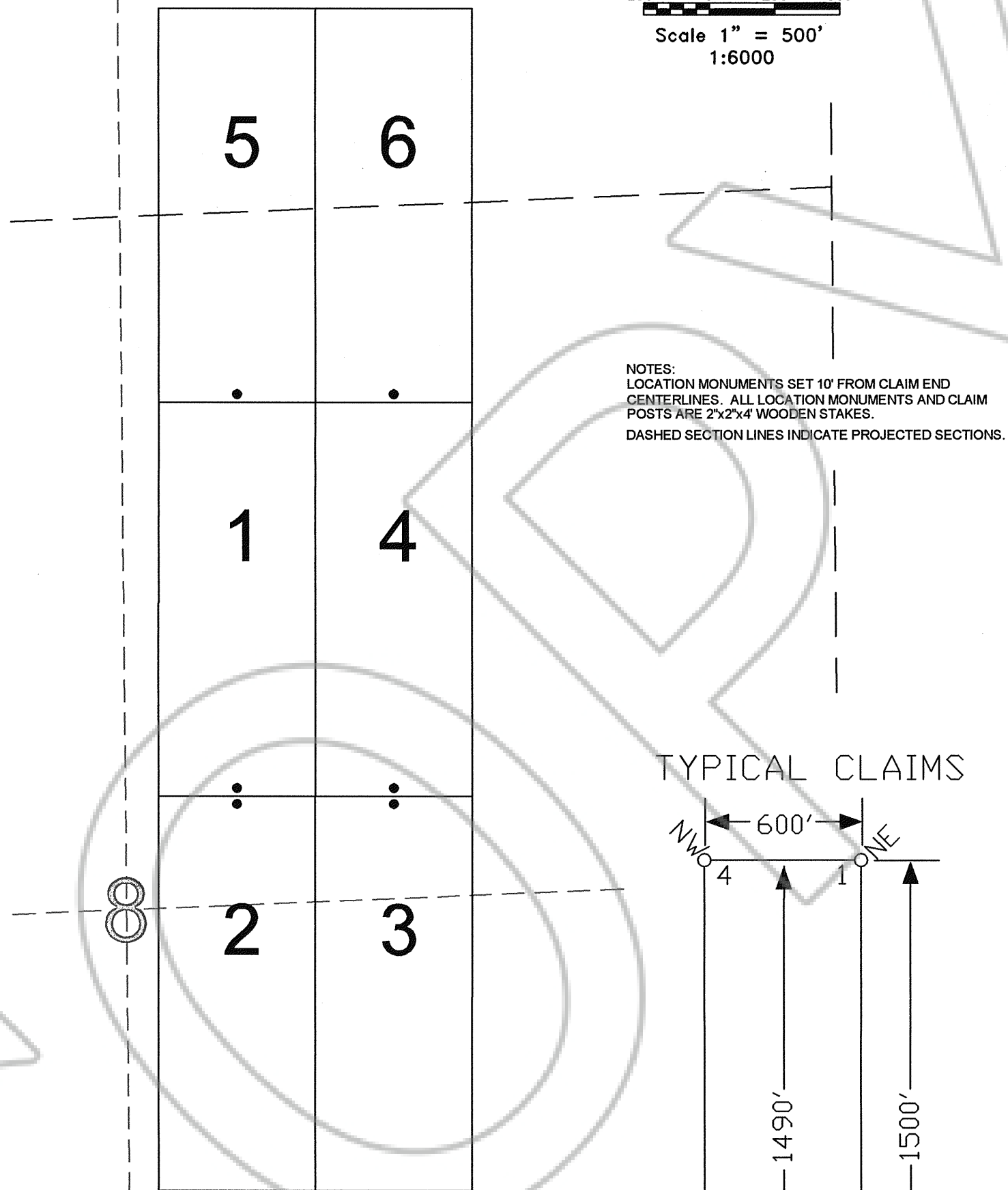
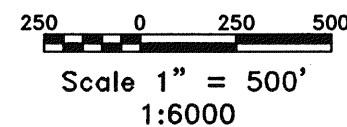
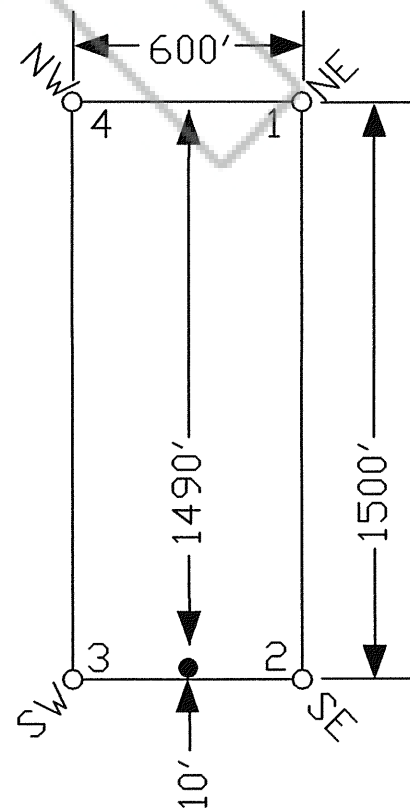


5



NOTES:
LOCATION MONUMENTS SET 10' FROM CLAIM END CENTERLINES. ALL LOCATION MONUMENTS AND CLAIM POSTS ARE 2"x2"x4' WOODEN STAKES.
DASHED SECTION LINES INDICATE PROJECTED SECTIONS.

TYPICAL CLAIMS



TIE POINT DATA:
THE SOUTHWEST CORNER OF WFWKV 2 LIES APPROXIMATELY 2,406 FEET EAST AND 12,126 FEET NORTH OF THE SOUTHWEST CORNER OF SECTION 20, T.22N., R.51E., M.D.B.M.

DOC # 0209864

06/06/2007 03:33 PM

Official Record

Recording requested By:
WFW RESOURCES LLC

Eureka County - NV

Mike Rebaleati - Recorder

Fee: \$94.00 Page 1 of

RPTT: Recorded By: FES

Book- Page- 0000



0209864

LOCATION DATES:
April 6, 2007 - WFWKV 1-6

	Location: WFW Resources, LLC 441 Fir Street, Elko, Nevada 89801 WFWKV 1-6 Lode Claims T.22N., R.51E.; Eureka County, Nevada	
	DATE: April 2007	DRAWN BY: [Signature]