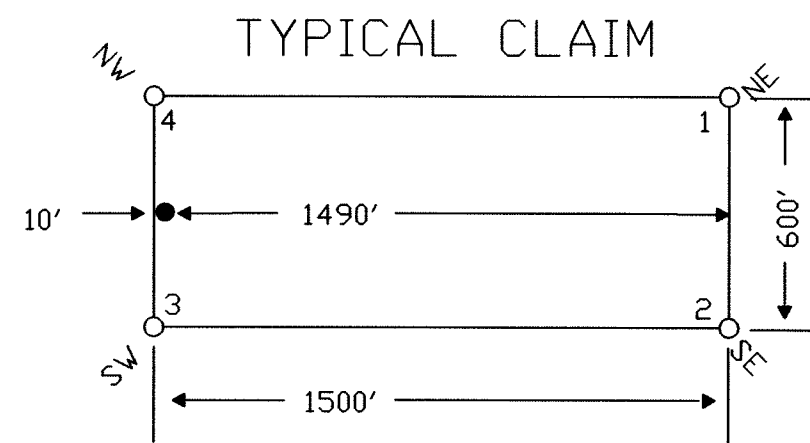
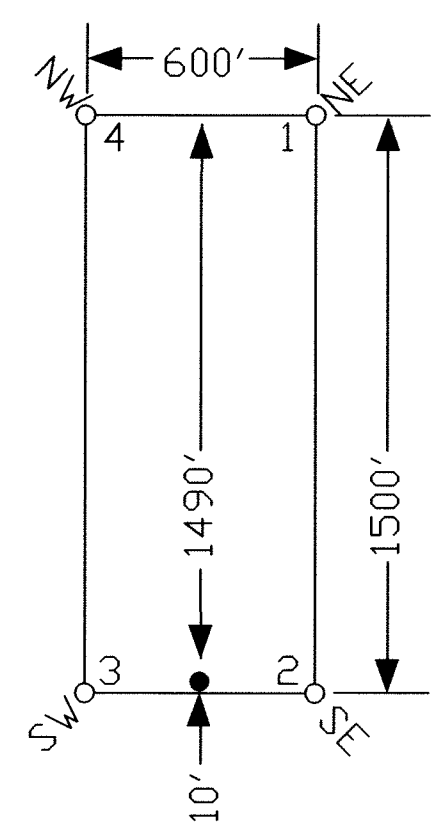


TYPICAL CLAIM



TIE POINT DATA:
THE NORTHWEST CORNER OF MK24 2 LIES APPROXIMATELY
69 FEET EAST AND 2,454 FEET SOUTH OF THE NORTHWEST
CORNER OF SECTION 24, T.28N., R.48E., M.D.B.M.

TIE POINT DATA:
THE NORTHEAST CORNER OF MK26 20 LIES APPROXIMATELY
3,991 FEET WEST AND 4,659 FEET SOUTH OF THE NORTHWEST
CORNER OF SECTION 24, T.28N., R.48E., M.D.B.M.

22

23

24

19

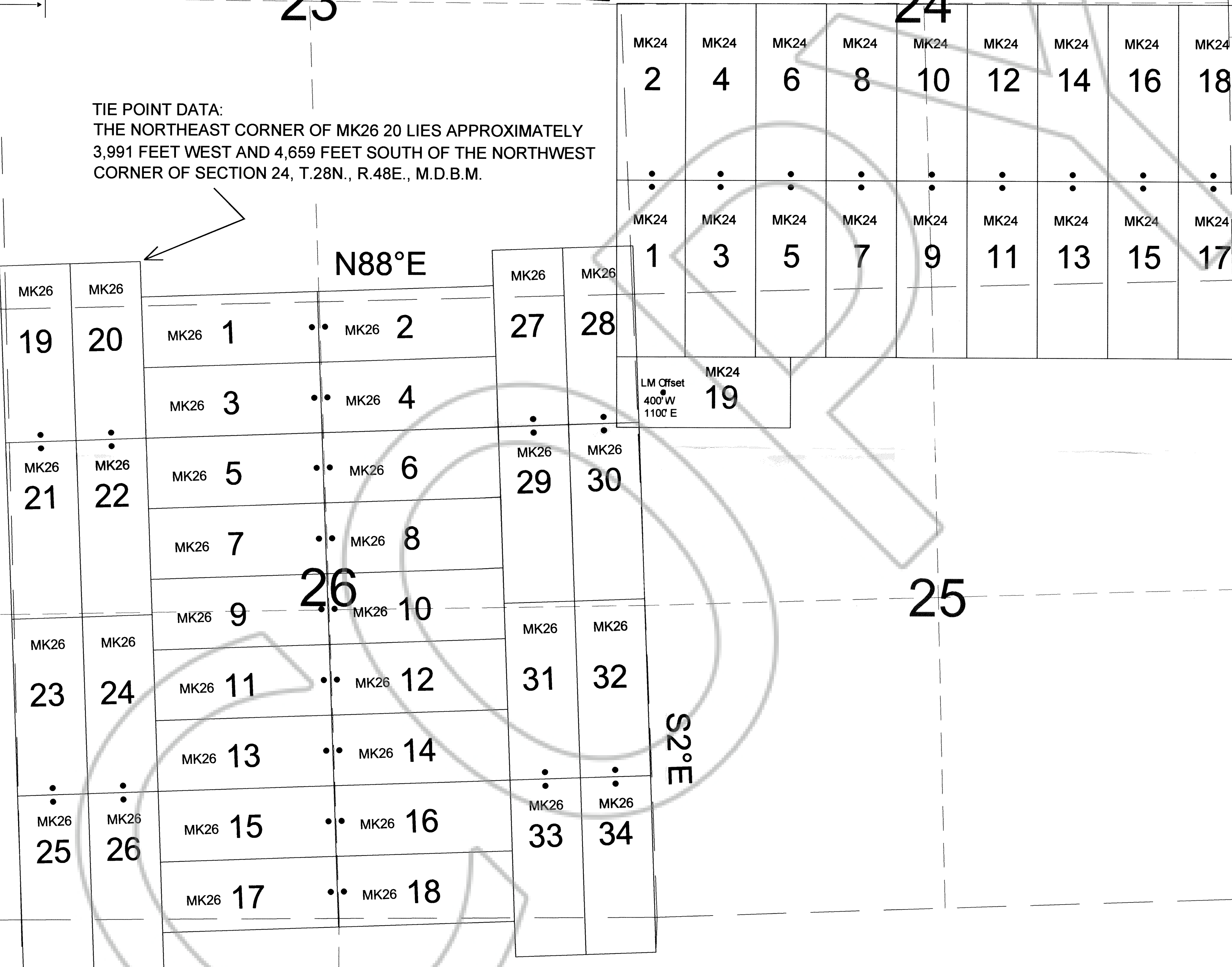
27

26

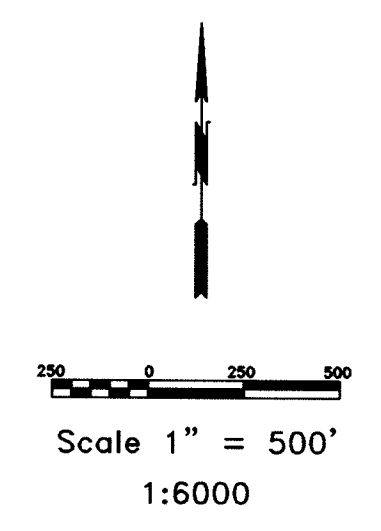
25

30

35



R.48E.
R.49E.



NOTES:
LOCATION MONUMENTS SET 10' FROM CLAIM END CENTERLINES
UNLESS NOTED ON MAP. ALL LOCATION MONUMENTS AND CLAIM
POSTS ARE 2"x2"x4' WOODEN STAKES.

DASHED SECTION LINES INDICATE PROJECTED SECTIONS.

LOCATION DATES:

March 12, 2007 - MK24 1-8
March 13, 2007 - MK24 9-19

March 14, 2007 - MK26 1-14,19-30
April 24, 2007 - MK24 15-18,31-34

(53 Total Claims)

DOC # 0209985

06/08/2007 1:50 PM
Official Record
Recording requested by
PALISADE VENTURES
Eureka County - NV
Mike Rebeati - Recorder
Fee: \$799.00 Page: 1 of 1
RPT Recorded By: LLH
Book- Page- 0000



Locator:
Palisade Ventures
109 Fir Street, Elko, Nevada 89801
MK24 1-19 and MK26 1-34 Lode Claims
T.28N., R.48,49E; Eureka County, Nevada

369 - 5th STREET
PH: (775) 778-0668 ELKO, NV 89801 FAX: (775) 778-0687

DATE: June 2007
ACAD FILE NAME: d:\m\07\06\pr\m\m1012.dwg
DRAWN BY: smis
PLOT SCALE: 1" = 500'