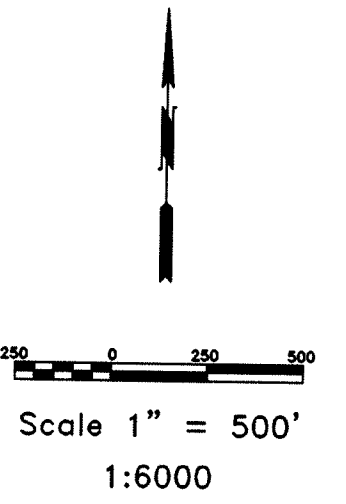
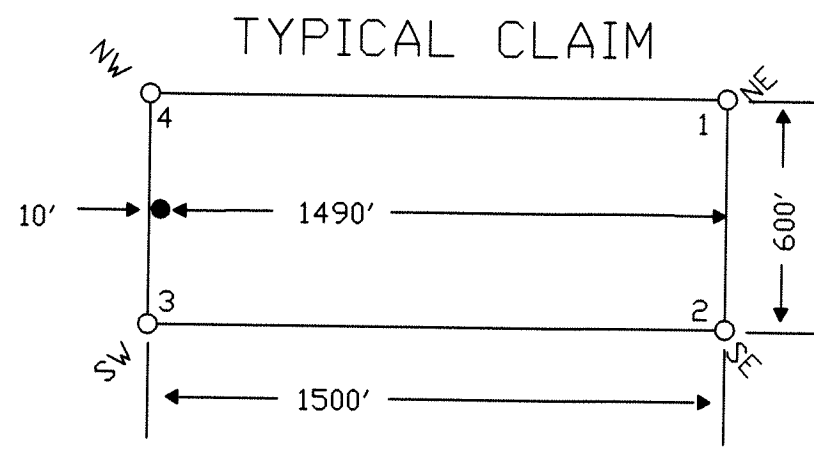
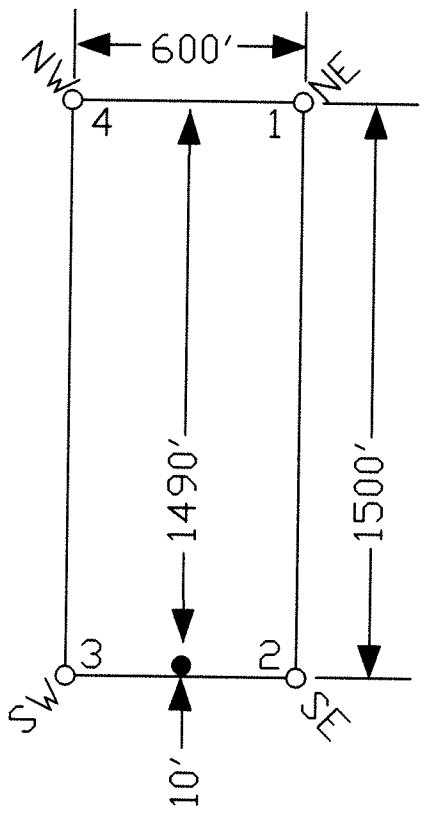
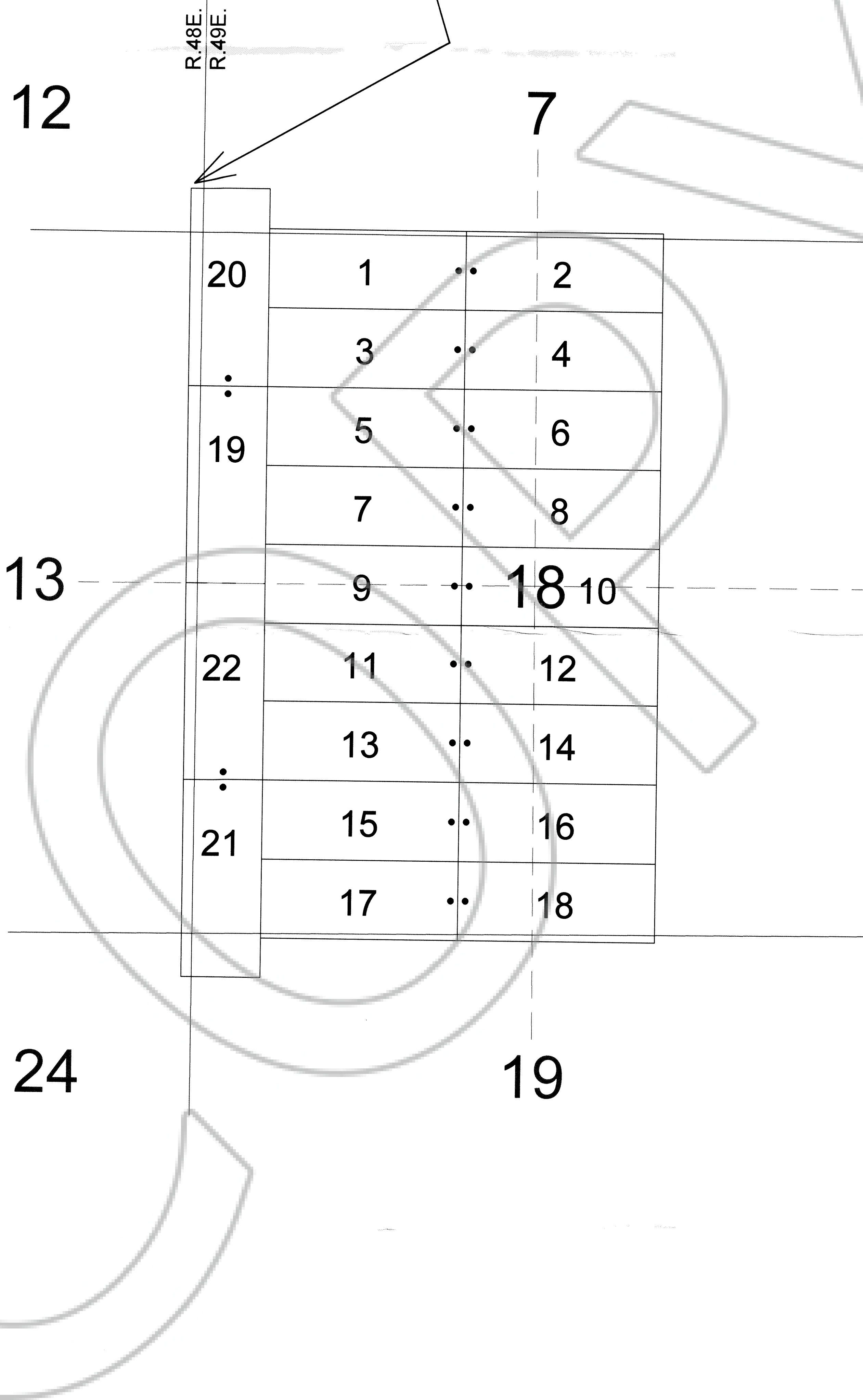


TYPICAL CLAIM



TIE POINT DATA:
 THE NORTHWEST CORNER OF ML18 20 LIES APPROXIMATELY
 95 FEET WEST AND 334 FEET NORTH OF THE NORTHWEST
 CORNER OF SECTION 18, T.28N., R.49E., M.D.B.M.



LOCATION DATES:
 March 19, 2007 - ML18 1-22

NOTES:
 LOCATION MONUMENTS SET 10' FROM CLAIM END
 CENTERLINES. ALL LOCATION MONUMENTS AND CLAIM
 POSTS ARE 2"x2"x4' WOODEN STAKES.

DASHED SECTION LINES INDICATE PROJECTED SECTIONS.

DOC # 0210047
 06/15/2007 04:29 PM
Official Record
 Recorded & Indexed By
 PALISADE VENTURES
 Eureka County - NV
 Mike Rebsleat1 - Recorder
 Fee: \$334.00 Page 1 of 1
 RPT: Recorded By: FES
 Book- Page- 0000



Locator:
Palisade Ventures
 109 Fir Street, Elko, Nevada 89801
 ML18 1-22 Lode Claims
 T.28N., R.48,49E; Eureka County, Nevada

369 - 5th STREET
 PH: (775) 778-0668 ELKO, NV 89801 FAX: (775) 778-0667

DATE: June 2007
 ACAD FILE NAME: client\07\061\p\ml18.dwg
 PLOT SCALE: 1" = 500'
 DRAWN BY: sms