

23

24

30

T27N R48E  
T27N R49E

26

25

31

BH 52

BH 19

BH 21

BH 23

BH 25

BH 27

BH 29

BH 31

BH 33

BH 35

BH 37

BH 39

BH 41

BH 43

BH 45

BH 47

BH 49

BH 20

BH 22

BH 24

BH 26

BH 28

BH 30

BH 32

BH 34

BH 36

BH 38

BH 40

BH 42

BH 44

BH 46

BH 48

BH 50

T27N R49E  
T26N R49E

BH 53

BH 55

BH 57

BH 59

BH 61

BH 63

BH 65

BH 67

BH 69

BH 71

BH 73

BH 75

BH 76

BH 77

BH 78

BH 79

BH 80

BH 54  
BH 56  
BH 58

35

BH 60

BH 62

BH 64

BH 66

BH 68

BH 70

BH 72

BH 74

6

36

BH 81

BH 82

BH 83

BH 84

BH 85

The NE Corner of BH 85 bears N17°54'W and is 1576' from the SE corner of Section 36 T27N R48E

T27N R48E  
T26N R48E

T26N R48E  
T26N R49E

2

1

7

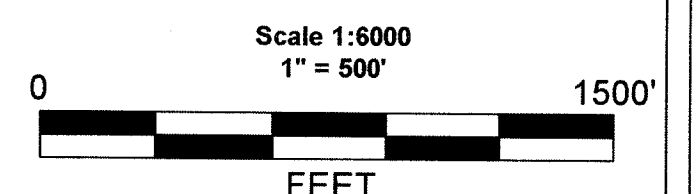
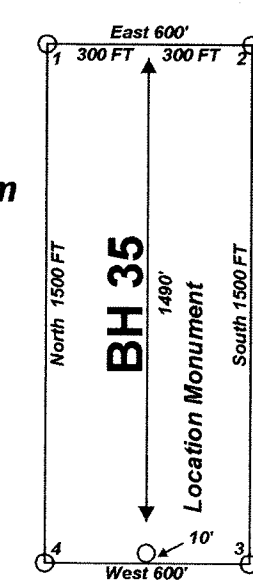
"BH" lode claims 1-52, 75-80 were located on May 14, 2007 and "BH" lode claims 53-74 were located on May 15, 2007 and "BH" lode claims 81-85 were located on June 15, 2007 in Section 1 Township 26 North Range 48 East and in Section 6 Township 26 North Range 49 East and in Sections 25-26, 35-36 Township 27 North Range 48 East and Section 31 Township 27 Range 49 East in Eureka County, Nevada

### Claim Location Map for BH 1-85 Sheet 1 of 1

Locator:  
Carlin Gold US Inc.  
One East Liberty St., #424  
Reno, Nv. 89501

Notes:  
Location Monuments are set 10' from claim end lines unless noted otherwise. All location and corner monuments are 2" X 2" X 4' wooden posts with scribed metal tags. All claims are 600' by 1500' unless noted otherwise.

Typical Claim  
DOC # 0210162  
Official Record  
Eureka County - NV  
Mike Rebaletti - Recorder  
Fee \$1,275.00 Page 1 of 1  
Book- 0000



MINING CLAIM LOCATION MAP BH 1-85 Lode Mining Claims
Carlin Gold US Inc. One East Liberty St., #424 Reno, NV 89501
Buckhorn_Claims_UTM_Feet.dwg June 21, 2007 Drawn By: G.J.S. Land Services Surveyed By: T&T Exploration L.L.C. Datum: 1927 Projection: UTM Zone 11 Units: Feet

0210162