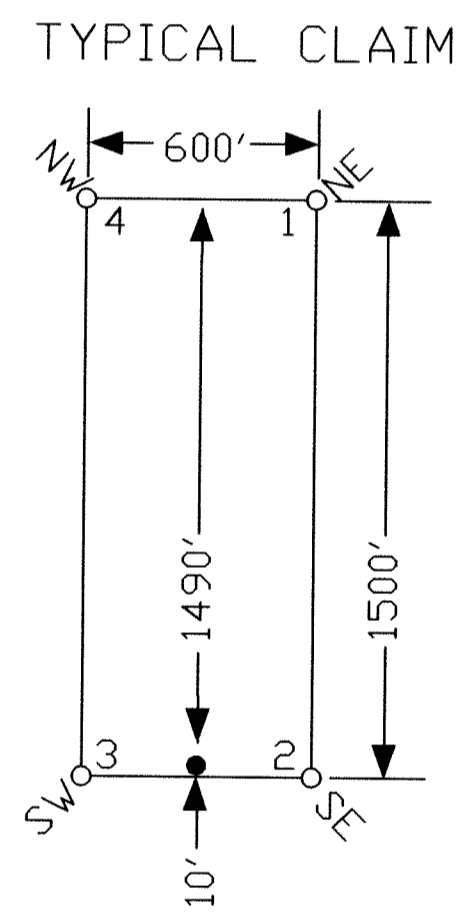
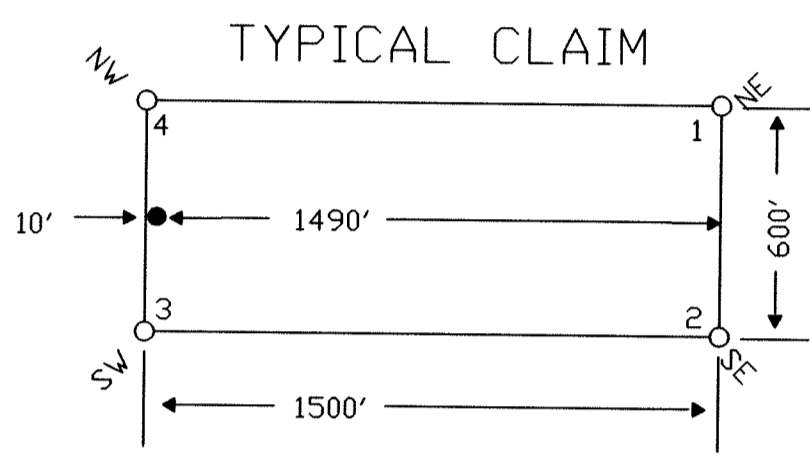
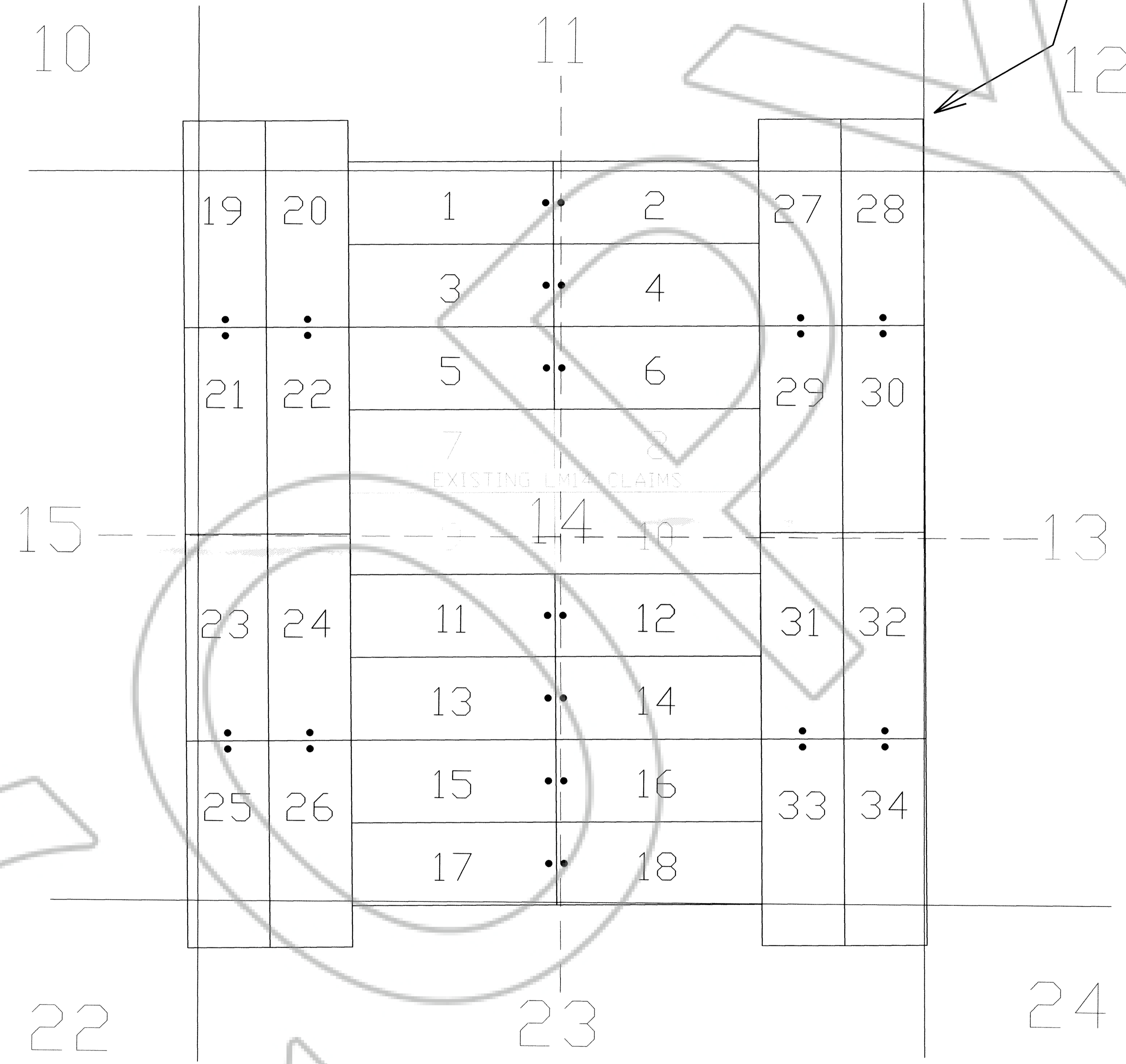


TIE POINT DATA:
 THE NORTHEAST CORNER OF LM14 28 LIES APPROXIMATELY
 8 FEET WEST AND 380 FEET NORTH OF THE NORTHEAST
 CORNER OF SECTION 14, T.29N., R.50E., M.D.B.M.



NOTES:
 LOCATION MONUMENTS SET 10' FROM CLAIM END
 CENTERLINES. ALL LOCATION MONUMENTS AND CLAIM
 POSTS ARE 2"x2"x4' WOODEN STAKES.

LOCATION DATES:
 April 6, 2007 - LM14 1-6,11-34
 (30 Total Claims)

DOC # 0210196
 07/02/2007 03:05 PM
Official Record
 Recorder Requested By:
 PALISADE VENTURES
 Eureka County - NV
 Mike Rebaletti - Recorder
 Fee \$450.00 Page 1 of 1
 RPT: Recorder By: FES
 Book- Page- 0000



Locator:
Palisade Ventures
 109 Fir Street, Elko, Nevada 89801
 LM14 1-6,11-34 Lode Claims
 T.29N.,R.50E; Eureka County, Nevada

DATE: June 2007
 ACAD FILE NAME: c:\msh\07\loc\pr\lm14.dwg
 PLOT SCALE: 1" = 500'

DRAWN BY: sms