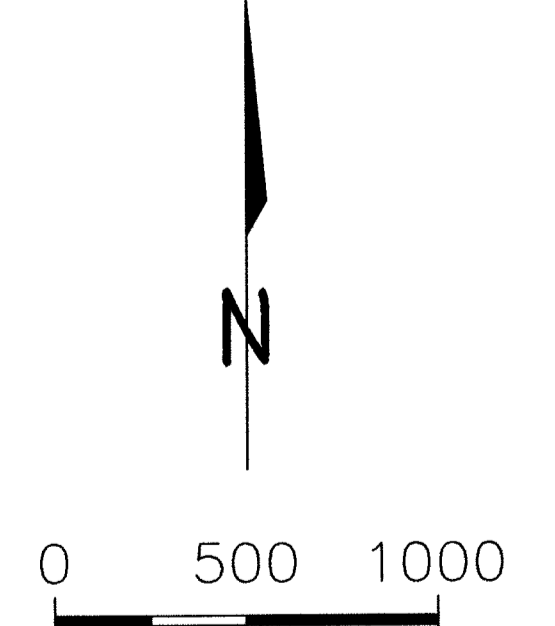
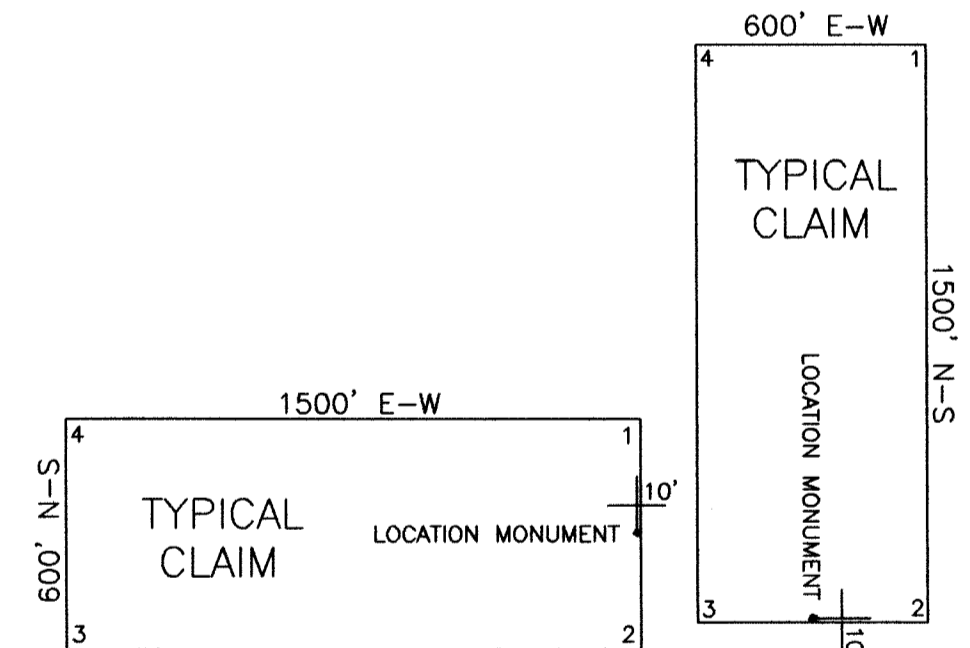


NOTES:
 Claims DU 46-47 & 66-67 are 1500 feet long and 400 feet wide.
 Location Monuments for claims DU 68-71 are located 100 feet north of the south claim lines.
 Location Monuments for claims DU 74-78 are located 300 feet east of the west claim endlines.

TIE POINT:
 The NE corner of DU 71 is approximately 55 feet north and 1455 feet west of the NE corner of Section 8, T32N, R49E, M.D.M.
 The SE corner of DU 67 is approximately 119 feet south and 362 feet east of the SE corner of Section 4, T32N, R49E, M.D.M.
 The SE corner of DU 24 is approximately 1263 feet north and 4761 feet west of the NE corner of Section 8, T32N, R49E, M.D.M.

ALL CLAIMS ARE 1500' x 600' UNLESS OTHERWISE NOTED.
 ALL MONUMENTS ARE 2" x 2" x 4' WOODEN POSTS.
 LOCATION MONUMENTS ARE SET 10' INSIDE CLAIM BOUNDARY UNLESS OTHERWISE NOTED.



SCALE
 U.S. Survey Foot
 Sections projected using
 Nevada BLM GCDB

CLAIM LOCATION DATES:
 April 11, 2007: DU 1-67
 April 12, 2007: DU 68-78

LODE MINING CLAIM MAP
DU 1-78

T31-32N, R48-49E, M.D.M.
 EUREKA COUNTY, NEVADA

DOC # 0210279

Official Record
 Recording requested by
 PEDIMENT GOLD LLC
 Eureka County - NV
 Mike Rebaletti - Recorder
 Fee: \$1,174.00 Page: 1 of 1
 APR 11 2007 Recorded By: FES
 Book- Page- 0000

Locator: **PEDIMENT GOLD LLC**
 1529 Greg Street
 Sparks, Nevada 89431

Drawn By: ARD | May 2007 | SHEET 1 OF 1

Survey and Map by:
 MINERAL EXPLORATION SERVICES, LLC
 5655 RIGGINS COURT, SUITE 15, RENO, NEVADA 89502
 (775) 954-1082 fax: (775) 829-6882