

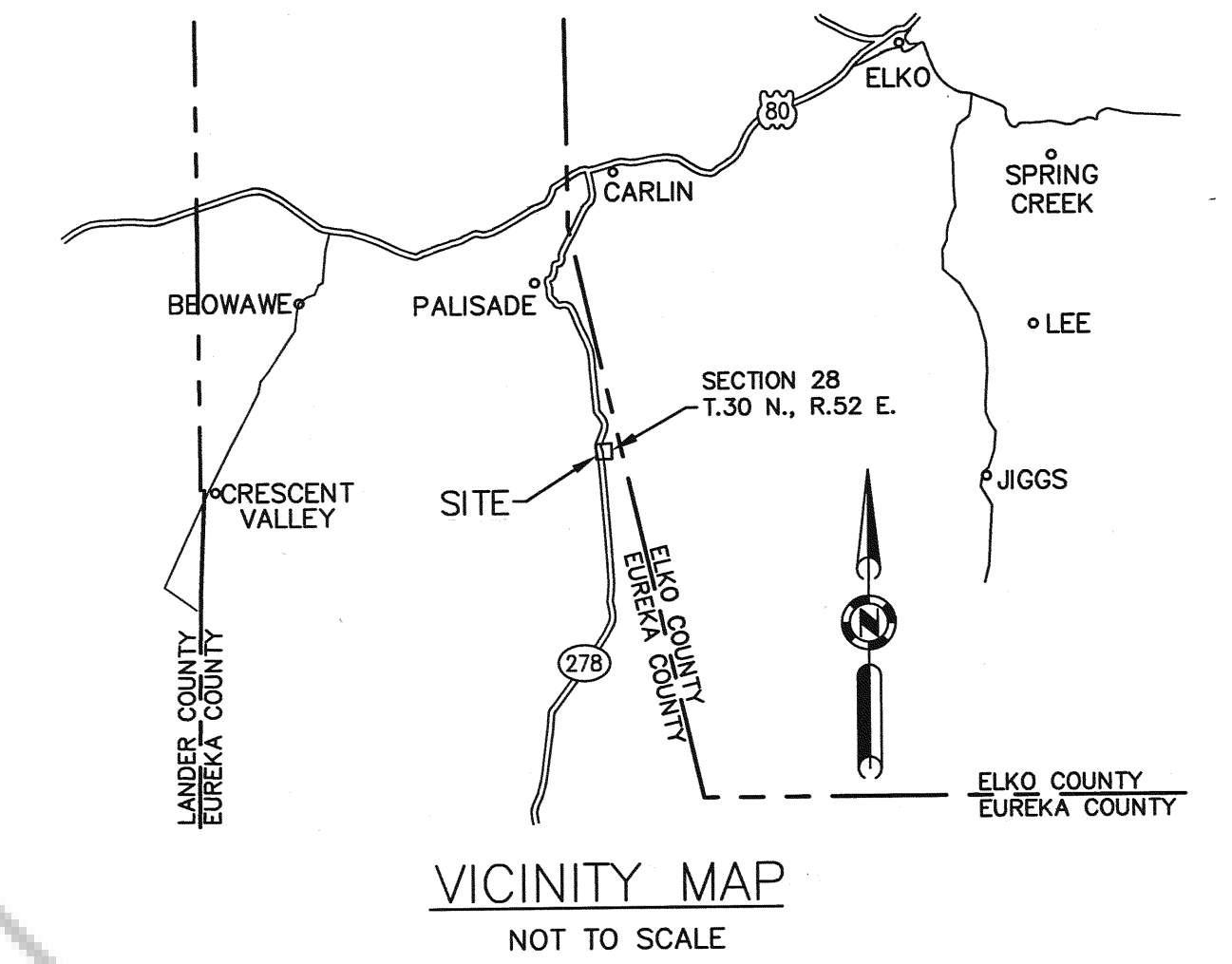
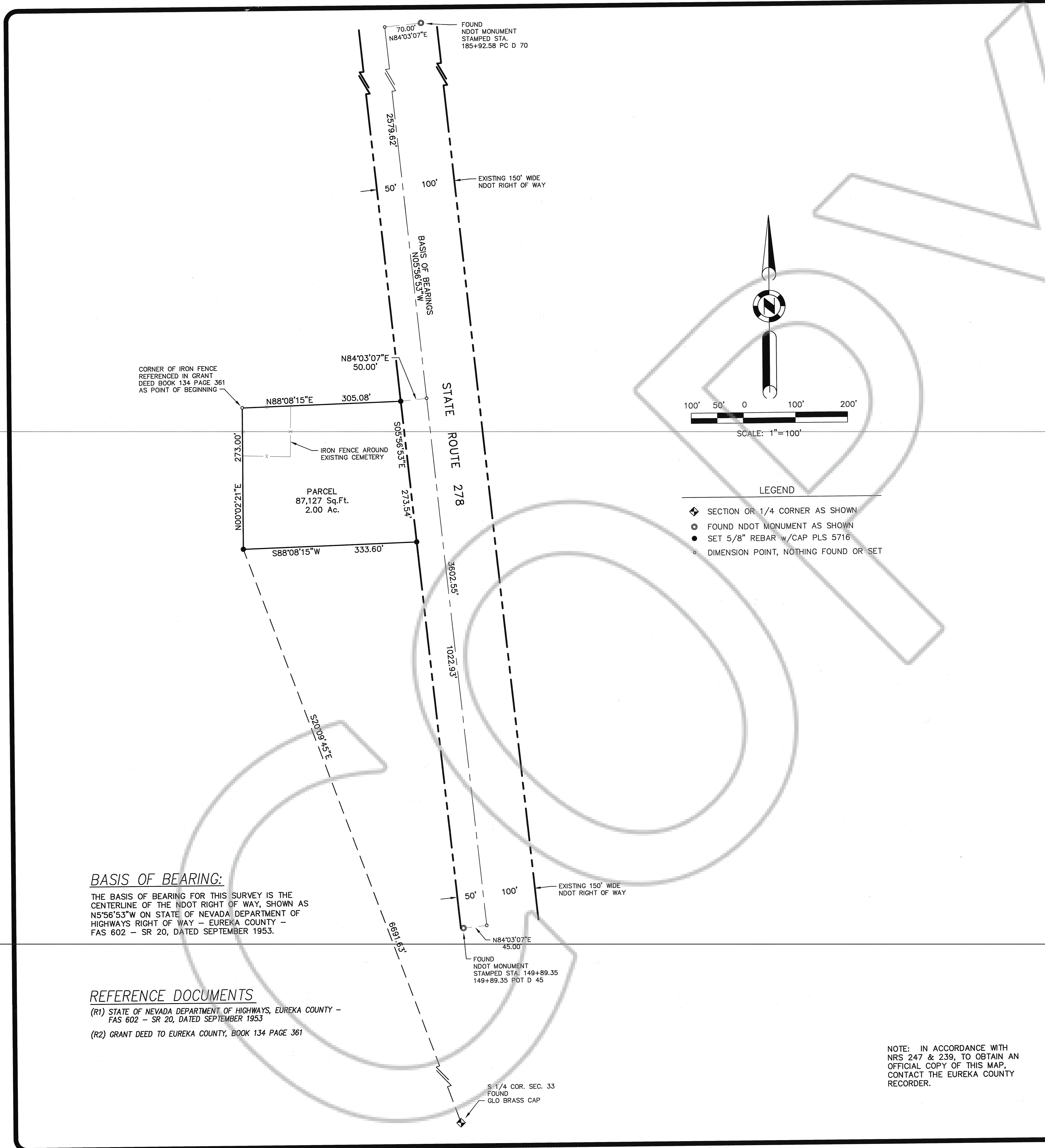
DRAWING NUMBER

DRAWING NUMBER

DRAWING NUMBER
210 281

DRAWING NUMBER
*Law Valley Cemetery
T.30 N. R.52 E. Sec. 28*

SACD PRODUCTS - NEW HIRE, MINNESOTA
REGISTERED PROFESSIONAL SURVEYOR

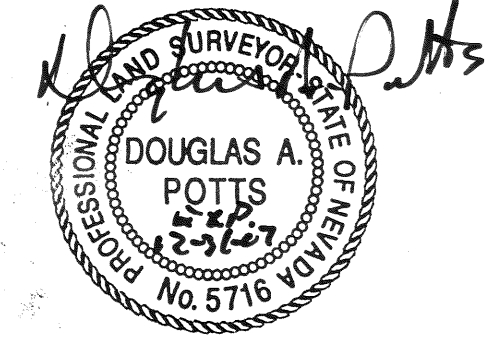


SURVEYOR'S CERTIFICATE

I, DOUGLAS A. POTTS, A PROFESSIONAL LAND SURVEYOR LICENSED IN THE STATE OF NEVADA, CERTIFY THAT:

- 1) THIS IS A TRUE AND ACCURATE REPRESENTATION OF THE LANDS SURVEYED UNDER MY SUPERVISION AT THE INSTANCE OF EUREKA COUNTY.
- 2) THE LANDS SURVEYED LIE WITHIN SECTION 28, T.30 N., R.52 E., M.D.B. & M. AND THE SURVEY WAS COMPLETED ON June 5, 2007
- 3) THIS MAP IS NOT IN CONFLICT WITH THE PROVISIONS OF N.R.S. 278.010 TO 278.630, INCLUSIVE, OR WITH PROVISIONS OF N.R.S. 625 AND ALL LOCAL ORDINANCES.
- 4) THE MONUMENTS ARE OF THE CHARACTER SHOWN, OCCUPY THE POSITIONS INDICATED, AND ARE OF SUFFICIENT DURABILITY.

Douglas A. Potts 6-29-07
DOUGLAS A. POTTS PLS 5716 DATE



NOTES

- 1) THIS RECORD OF SURVEY IS REQUIRED PER N.R.S. 625.340.
- 2) THIS IS NOT A PARCEL MAP AS DEFINED
- 3) THIS RECORD OF SURVEY IS NOT IN CONFLICT WITH EXISTING ZONING REQUIREMENTS

NOTE: IN ACCORDANCE WITH NRS 247 & 239, TO OBTAIN AN OFFICIAL COPY OF THIS MAP, CONTACT THE EUREKA COUNTY RECORDER.

RECORD OF SURVEY		FILED FOR RECORD THIS _____ DAY OF _____, 2007, AT _____ M.,
FOR EUREKA COUNTY		Doc # 0210281
PINE VALLEY CEMETERY PROPERTY CONVEYED TO EUREKA COUNTY BOOK 134 PAGE 361		07/10/2007 02:44 PM Official Record Recording requested by EUREKA COUNTY, NEVADA
A PORTION OF SECTION 28, T.30 N., R.52 E., M.D.B. & M.		Eureka County - NV Mike Rebaletti - Recorder Page 1 of 1 RPT: Recorded By: FES Book- Page- 0000
	800 E. COLLEGE PARKWAY CARSON CITY, NEVADA TEL (775) 883-7077	DATE: 5-17-07 JOB No: 6650.013 DWG: 6650013ROS.dwg SHEET 1 OF 1