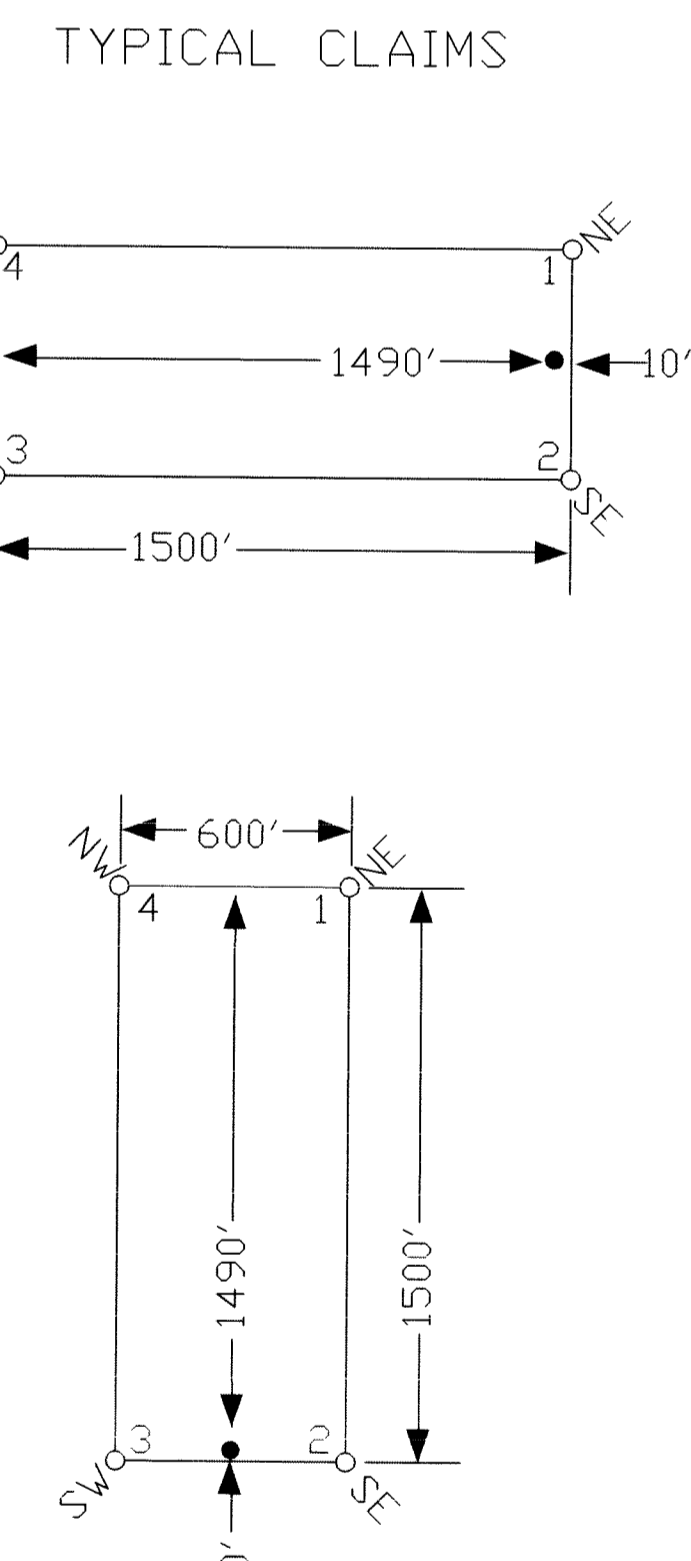
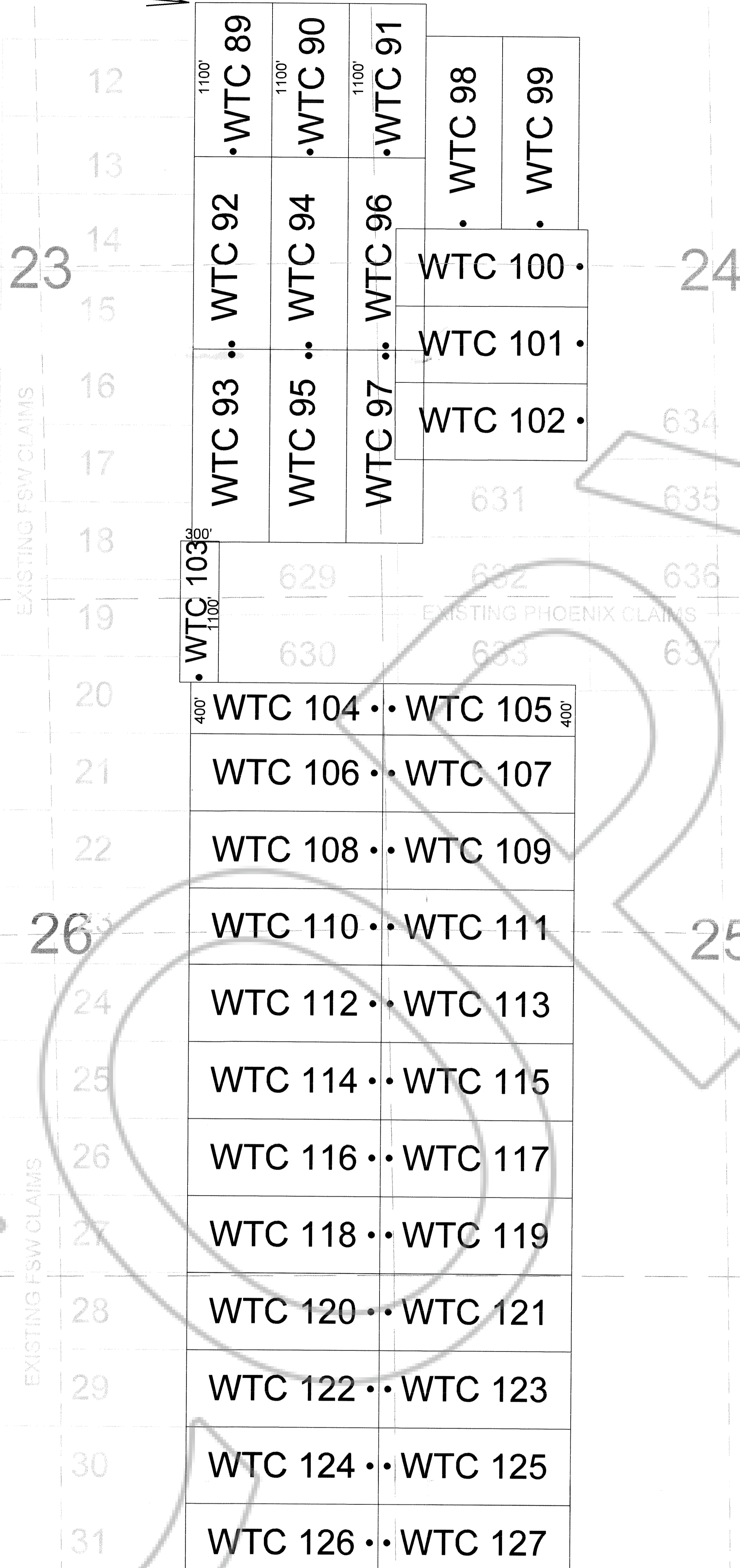
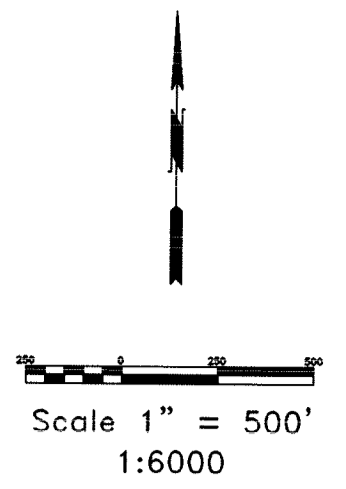


TIE POINT DATA:
 THE NORTHWEST CORNER OF WTC 89 LIES APPROXIMATELY
 3,889 FEET EAST AND 468 FEET SOUTH OF THE NORTHWEST CORNER
 OF SECTION 23, T.26N., R.52E., M.D.B.M.



DOC # 0210619
 09/19/2007 11:53 AM
Official Record
 Recorded & Indexed by
 GOLDEN GRYPHON USA INC
 Eureka County - NV
 Mike Rebaletti - Recorder
 Fee \$550.00 Page 1 of 1
 RPT Recorded By LLH
 Book- Page- 0000

LOCATION DATES:
 June 22, 2007 - WTC 89-127
 (39 Total Claims)

NOTES:
 LOCATION MONUMENTS SET 10' FROM CLAIM END
 CENTERLINES. ALL LOCATION MONUMENTS AND CLAIM
 POSTS ARE 2"x2"x4' WOODEN STAKES.
 DASHED SECTION LINES INDICATE PROJECTED SECTIONS.

	Locator: Golden Gryphon USA Inc. 1400 Tanager place RR21, Roberts Creek, BC V0N 2W1 WTC 89-127 Lode Claims T.26N.,R52E; Eureka County, Nevada	
	DATE: September 2007	ACAD FILE NAME: G:\01\2007\07\07\07.dwg PLOT SCALE: 1"=500'

369 - 5th STREET
 PH: (775) 778-0668 ELKO, NV 89801 FAX: (775) 778-0687