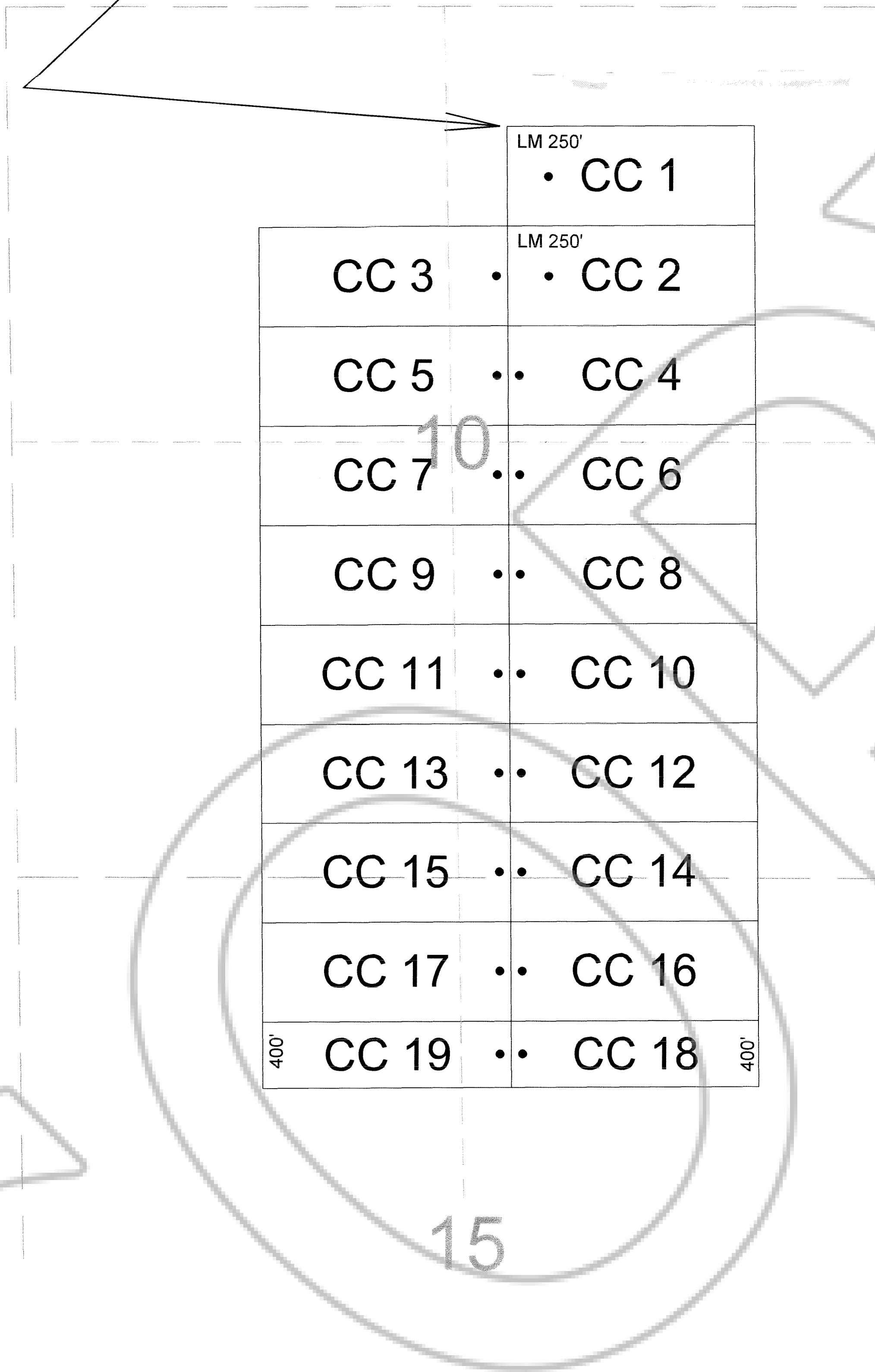
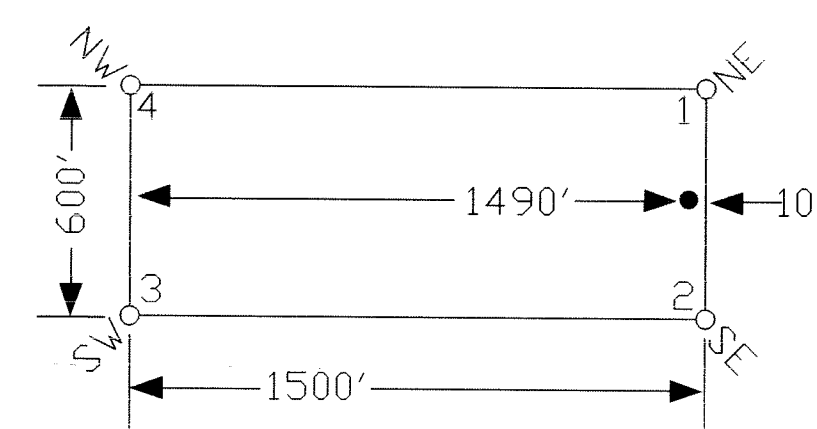


TIE POINT DATA:
 THE NORTHWEST CORNER OF CC 1 LIES APPROXIMATELY
 3,042 FEET EAST AND 6,019 FEET SOUTH OF THE NORTHWEST CORNER
 OF SECTION 3, T.26N., R.52E., M.D.B.M.



TYPICAL CLAIMS

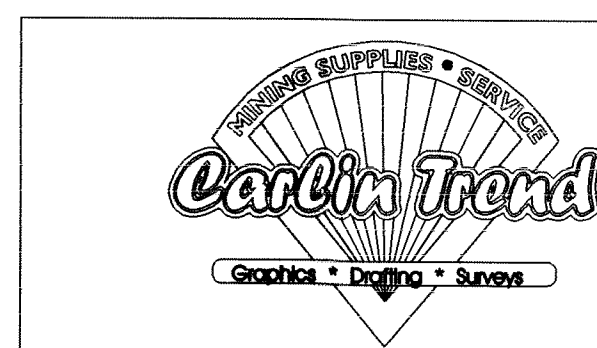
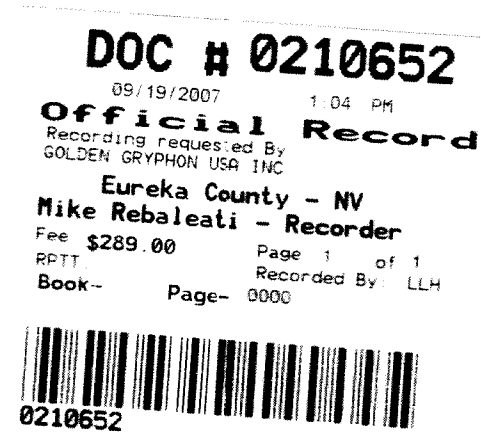


LOCATION DATES:
 June 21, 2007 - CC 1-19

(19 Total Claims)

NOTES:
 LOCATION MONUMENTS SET 10' FROM CLAIM END
 CENTERLINES. ALL LOCATION MONUMENTS AND CLAIM
 POSTS ARE 2"x2"x4' WOODEN STAKES.

DASHED SECTION LINES INDICATE PROJECTED SECTIONS.



Locator:
 Golden Gryphon USA Inc.
 1400 Tanager place RR21, Roberts Creek, BC V0N 2W1
 CC 1-19 Lode Claims
 T.26N.,R52E; Eureka County, Nevada

369 - 5th STREET
 PH: (775) 778-0668 ELKO, NV 89801 FAX: (775) 778-0687

DATE: September 2007
 ACAD FILE NAME: c:\clients\07\gryphon\07122607.dwg
 PLOT SCALE: 1"=500'
 DRAWN BY: BMS