

25

30

29

N60°E

N30°W

N30°W

N60°E

GBW 1

GBW 2

GBW 3

GBW 4

GBW 5

GBW 6

GBW 31

GBW 32

GBW 33

GBW 34

GBW 35

GBW 36

GBW 37

GBW 38

GBW 39

GBW 40

GBW 41

GBW 42

GBW 43

GBW 44

GBW 45

GBW 46

GBW 47

GBW 48

GBW 49

GBW 50

GBW 51

GBW 52

GBW 53

GBW 54

GBW 55

GBW 56

GBW 57

GBW 58

GBW 59

GBW 60

GBW 61

GBW 62

GBW 63

GBW 64

GBW 65

GBW 66

GBW 67

GBW 68

GBW 69

GBW 70

GBW 71

GBW 72

GBW 73

GBW 74

GBW 75

GBW 76

GBW 77

GBW 78

GBW 79

GBW 80

GBW 81

GBW 82

GBW 83

GBW 84

GBW 85

GBW 86

GBW 87

GBW 88

GBW 89

GBW 90

GBW 91

GBW 92

GBW 93

GBW 94

GBW 95

GBW 96

The SE Corner of GBW 5 bears  
N37°13'W and is 2935' from the  
SE corner of Section 36  
T23N R49E

T23N R49E  
T22N R49E

T23N R50E  
T22N R50E

1

6

12

Sheet 1 of 2  
Sheet 2 of 2

### Claim Location Map for GBW 1-96 Claims Sheet 1 of 2

GBW lode claims 31-66 and 89 were located on August 25, 2007;  
GBW lode claims 7-30 and 67-77 were located on August 26, 2007;  
GBW lode claims 78-88 and 90-95 were located on August 27, 2007, and  
GBW lode claims 1-6 and 96 were located on August 28, 2007 in  
Sections 4,5,6,7,8,17 & 18 Township 22 North Range 50 East,  
Sections 30,31 & 32 Township 23 North Range 50 East, and  
Sections 25 & 36 Township 23 North Range 49 East  
in Eureka County, Nevada

DOC # 0211085

Official Record

Eureka County - NV

Mike Rebalcati - Recorder

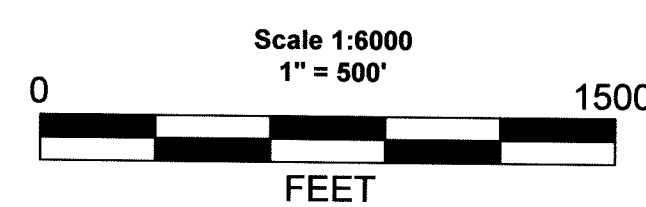
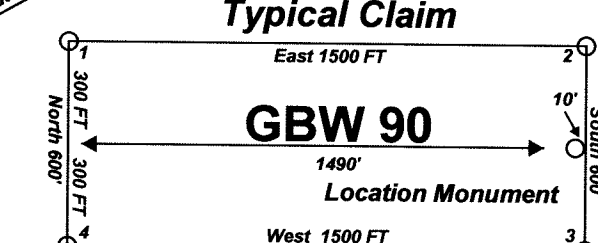
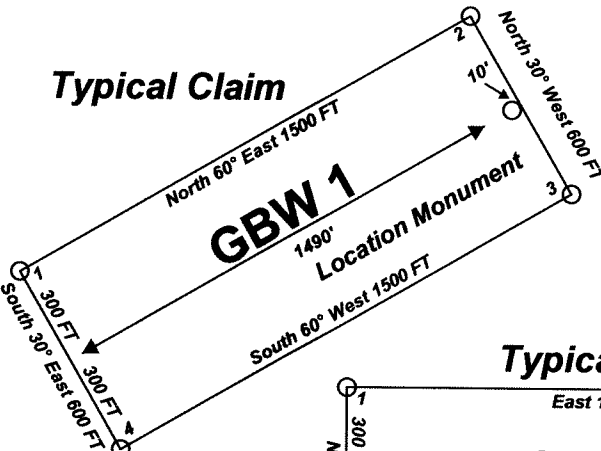
Fee: \$1,444.00 Page 1 of 1

Book- Page- 1072

0211085

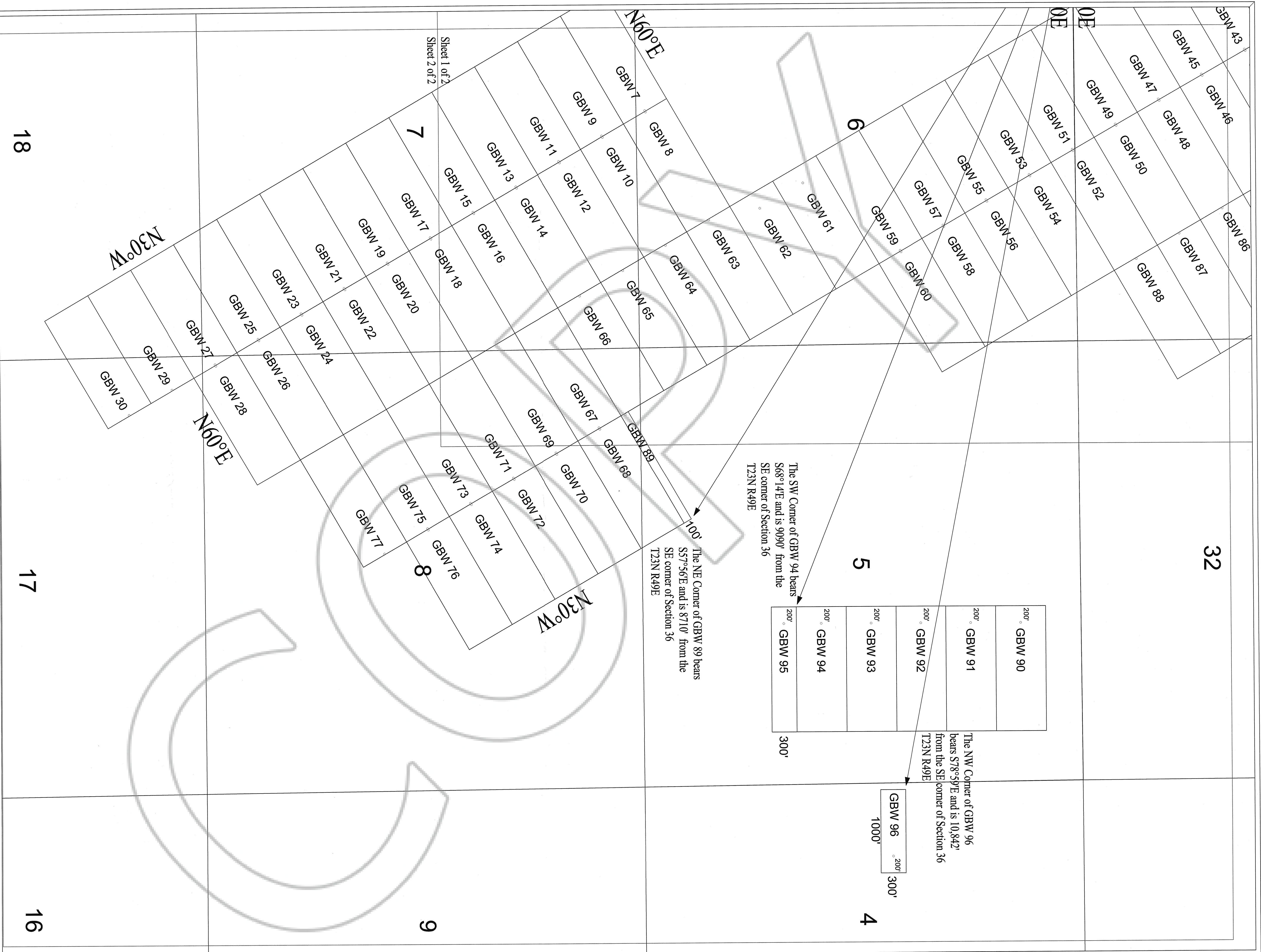
Locator:  
White Knight Gold (US) Inc.  
1595 Meadow Wood Lane Suite 3  
Reno NV. 89502

Notes:  
Location Monuments are set 10' from claim  
end lines unless noted otherwise. All location  
and corner monuments are 2" X 2" X 4' wooden  
posts with scribed metal tags. All claims are  
600' by 1500' unless noted otherwise. All  
bearings based on UTM North.



MINING CLAIM LOCATION MAP	
GBW 1-96	
Lode Mining Claims	
Locator:	White Knight Gold (US) Inc.
	1595 Meadow Wood Lane Suite 3
	Reno NV. 89502
GBW_Claims_UTM_Feet.dwg	September 11, 2007
Drawn By:	G.I.S. Land Services
Surveyed By:	T&T Exploration LLC
Datum:	1927 Projection: UTM Zone 11
Units:	Feet





Claim Location Map for GBW 1-96 Claims  
Sheet 2 of 2

GBW lode claims 31-66 and 89 were located on August 26, 2007.  
GBW lode claims 7-30 and 67-77 were located on August 26, 2007,  
GBW lode claims 78-88 and 90-95 were located on August 27, 2007, and  
GBW lode claims 1-6 and 96 were located on August 28, 2007, in  
Sections 4, 5, 6, 7, 8, 17 & 18 Township 22 North Range 50 East,  
Sections 30, 31 & 32 Township 23 North Range 50 East, and  
Sections 25 & 36 Township 23 North Range 49 East  
in Eureka County, Nevada

Locator:  
White Knight Gold (US) Inc.  
1595 Meadow Wood Lane Suite 3  
Reno NV, 89502

DOC # 0211085

11/16/2007 04:20 PM

OFFICIAL RECORD

Recorded by  
WHITE KNIGHT GOLD (US) INC. NV

Mike Schaefer, Recorder

Fee: \$1,444.00

Page: 000000 of 1

Book: 0211085

Notes:  
Location Monuments are set 10' from claim  
end lines unless noted otherwise. All location  
and corner monuments are 2" X 2" X 4' wooden  
posts with scribed metal tags. All claims are  
600' by 1500' unless noted otherwise. All  
bearings based on UTM North.

Scale 1:6000  
1" = 600'

0 1500'

FEET

MINING CLAIM LOCATION MAP  
GBW 1-96

Lode Mining Claims

Locator:  
White Knight Gold (US) Inc.  
1595 Meadow Wood Lane Suite 3  
Reno NV, 89502

GBW Claims, UTM, Feb.dwg  
September 11, 2007

Drawn By: GUS, Land Services

Surveyed By: T&T Exploration LLC

Datum: 1927 Projection: UTM Zone 11  
Units: Feet

Typical Claim

GBW 1

North 49° East 100' FT

East 1500' FT

South 49° West 600' FT

10' Location Monument

Typical Claim

GBW 90

East 1500' FT

South 49° West 600' FT

10' Location Monument